



A-F School Letter Grades Working Group

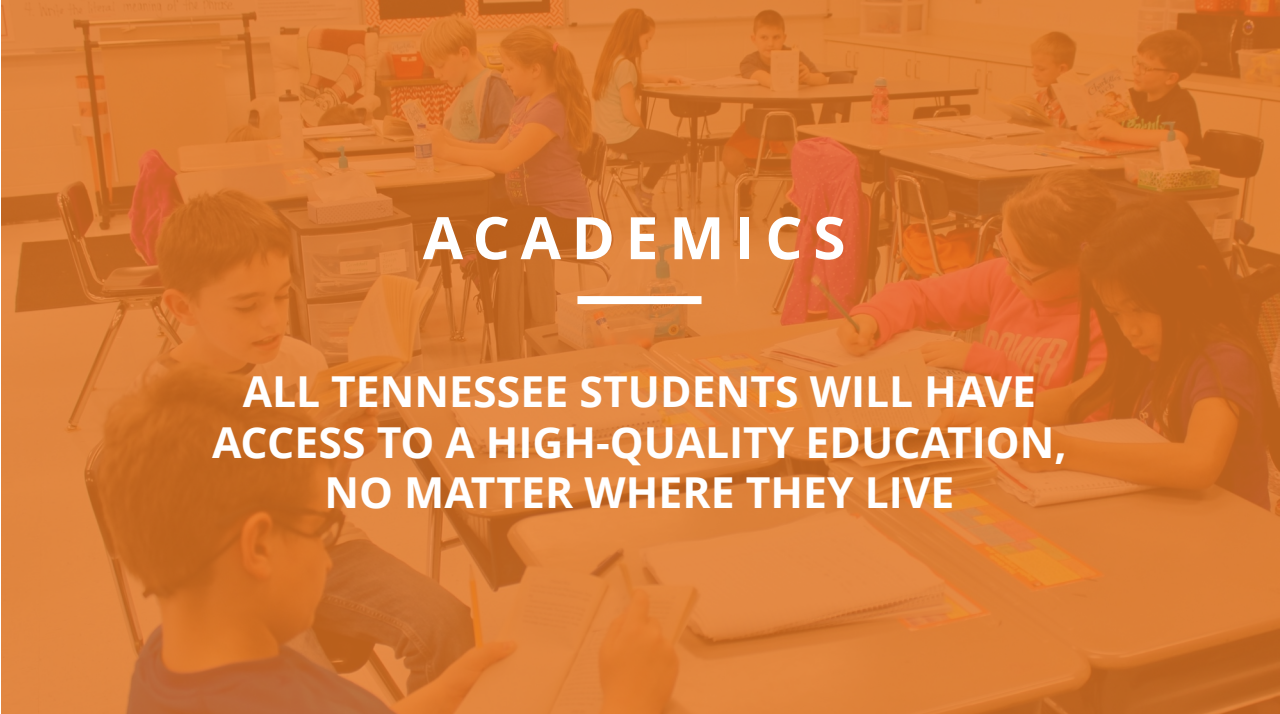
Meeting 2: Achievement
Tuesday, October 10, 2023





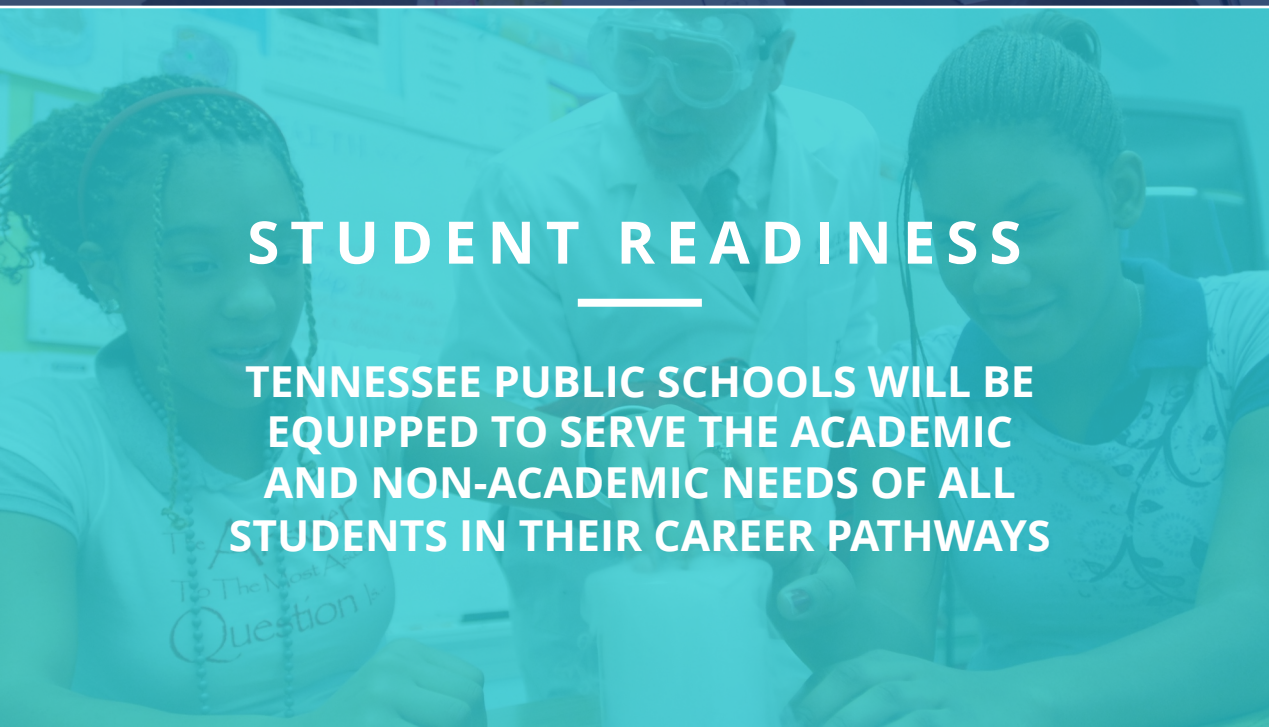
BEST FOR
ALL

We will set all students on a path to success.



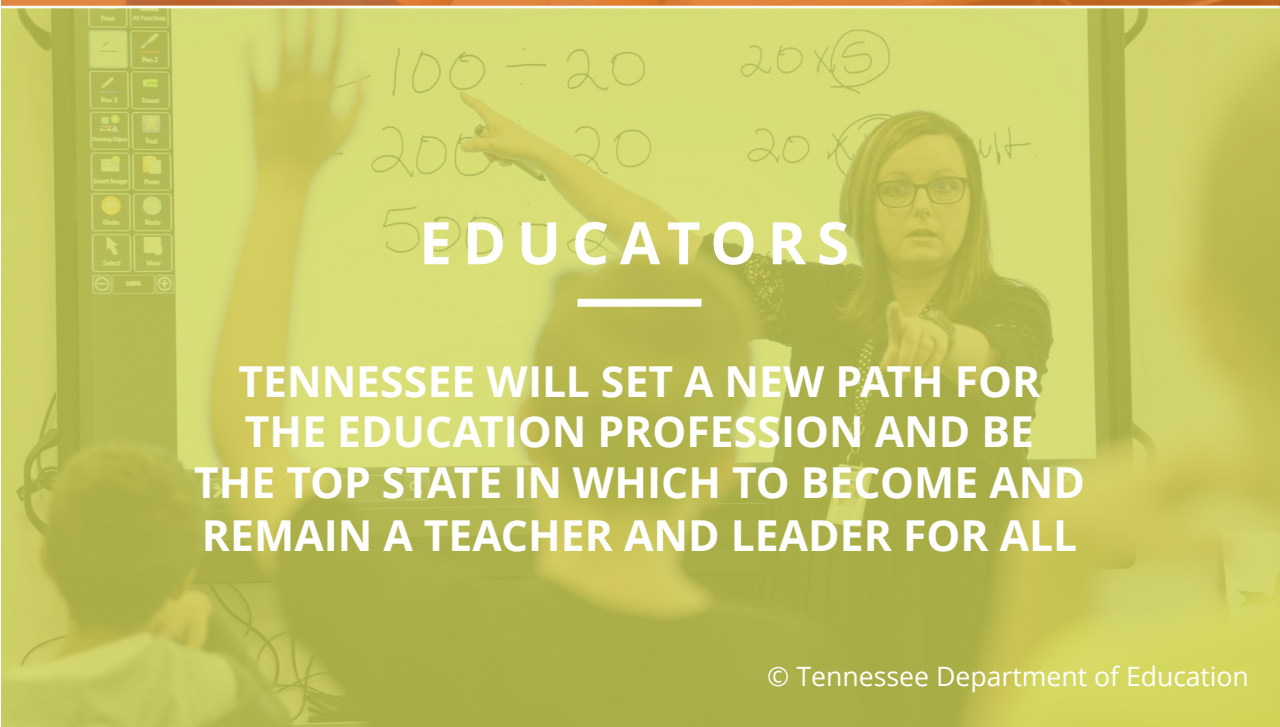
ACADEMICS

ALL TENNESSEE STUDENTS WILL HAVE ACCESS TO A HIGH-QUALITY EDUCATION, NO MATTER WHERE THEY LIVE



STUDENT READINESS

TENNESSEE PUBLIC SCHOOLS WILL BE EQUIPPED TO SERVE THE ACADEMIC AND NON-ACADEMIC NEEDS OF ALL STUDENTS IN THEIR CAREER PATHWAYS



EDUCATORS

TENNESSEE WILL SET A NEW PATH FOR THE EDUCATION PROFESSION AND BE THE TOP STATE IN WHICH TO BECOME AND REMAIN A TEACHER AND LEADER FOR ALL



Meeting 2 Agenda

- Group Norms
- Overview of **Achievement**
- Review of Prompts
- Breakout Discussions
 - Prompt 1: Tested Subjects
 - Prompt 2: Weighting the Subjects
 - Prompt 3: Absolute vs. Distribution
- Breakout Share-Outs
- Next Meeting



Group Norms



Group Norms and Tips

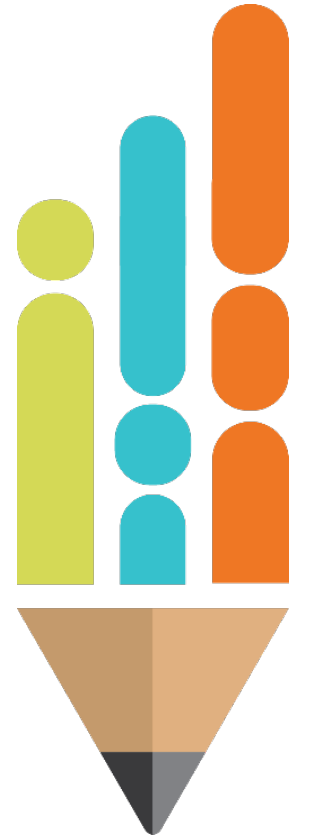
We have limited time together and we are grateful for your participation. To best use our time together, here are some tips for engaging:

Do's:

- Contribute your perspective
- Consider parents and families
- Review public comment
- Engage your communities
- Provide clear input

Don'ts:

- Forget the intended audiences
- Debate the the law
- Ignore the legal requirements
- Focus on reporting displays
- Stray from the meeting agenda, as much as possible





Develop a ***calculation***
to generate
A-F letter grades for schools

Overview of Academic Achievement

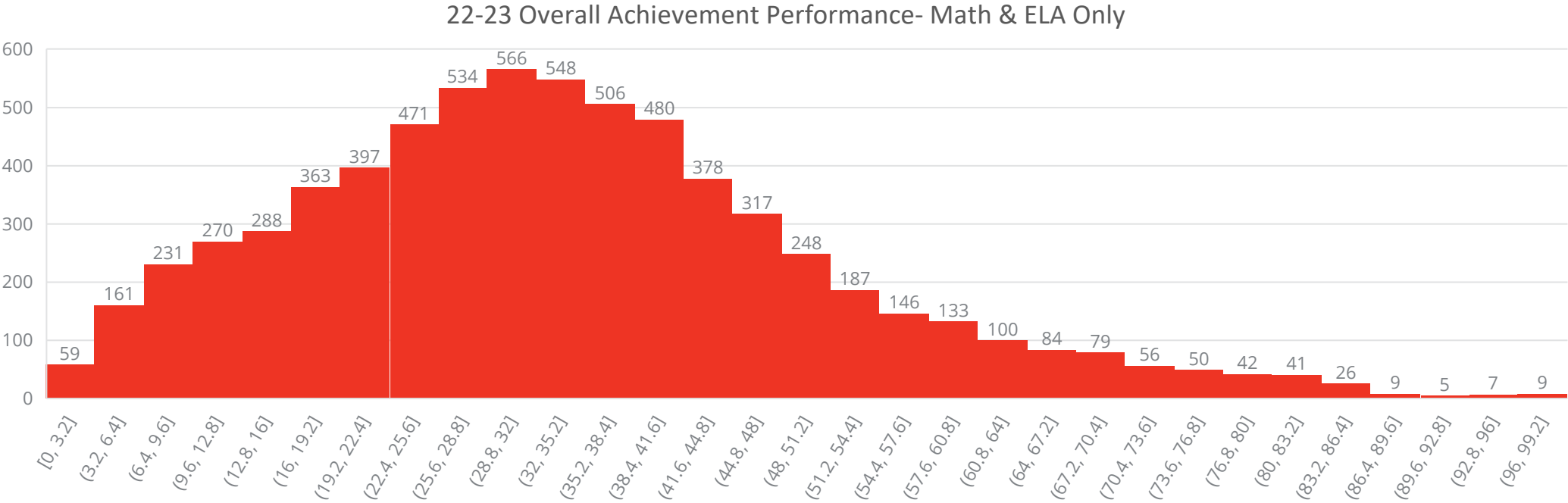


Legal Requirements: T.C.A. 49-1-228

- a. The department of education shall develop a school grading system that annually assigns A, B, C, D, and F letter grades to schools based on:
 - a. **Student performance on the Tennessee comprehensive assessment program (TCAP) tests or end-of-course exams;**
 - b. Student growth as indicated by Tennessee Value-Added Assessment System (TVAAS) data or data from other measures of student growth; and
 - c. Other outcome indicators of student achievement that the department finds to be reliable measures of school performance.
- b. The department of education shall include each school's A, B, C, D, or F grade on the state report card.
- c. Implementation of the school grading system shall begin in the 2017-2018 school year; provided, however, prior to implementation, the state board shall review the grading scale developed by the department.
- d. The department shall provide notice of the adopted grading scale to each LEA prior to the start of the 2017-2018 school year.
- e. Notwithstanding subsection (a), student performance and student growth data from the TNReady assessments administered in the 2017-2018 school year shall not be used to assign a letter grade to a school pursuant to this section.
- f. Notwithstanding subsections (a)-(c), student performance and student growth data from the Tennessee comprehensive assessment program (TCAP) tests, which include, but are not limited to, TNReady assessments, English learner assessments, alternate TCAP assessments, and end-of-course examinations, administered in the 2019-2020 school year shall not be used to assign a letter grade to a school, unless the use results in a higher letter grade for the school.
- g.
 - a. If eighty percent (80%) or more of an LEA's or public charter school's students enrolled in grades three through twelve (3-12) participate in the Tennessee comprehensive assessment program (TCAP) tests administered in the 2020-2021 school year, then, notwithstanding subsections (a)-(c), student performance and student growth data generated from the TCAP tests administered in the 2020-2021 school year shall not be used to assign a letter grade to a school.
 - b. The commissioner of education may, at the commissioner's discretion, grant an LEA or public charter school a waiver from the eighty-percent-participation requirement in subdivision (g)(1).
- h. The department shall not issue letter grades or any other summative ratings for schools eligible for the accountability protections in subdivision (g)(1) or schools that receive a waiver from the commissioner pursuant to subdivision (g)(2) in the state report card for the 2020-2021 school year; provided, that the department shall provide student performance and student growth data to LEAs, and as required by federal law.

Today's Focus: Achievement

- Academic achievement represents how well students enrolled in a school are mastering grade-level standards



* Accountability Attribution Rules Applied

Review of Prompts



Meeting 2: Achievement *Prompts*

1. Which subject areas should be included in the achievement metric? (All tested subjects, or a subset of all tested subjects. If only a subset, which ones?)

2. How should subjects be weighted?

3. How should the letter grades be applied to the achievement results? a.

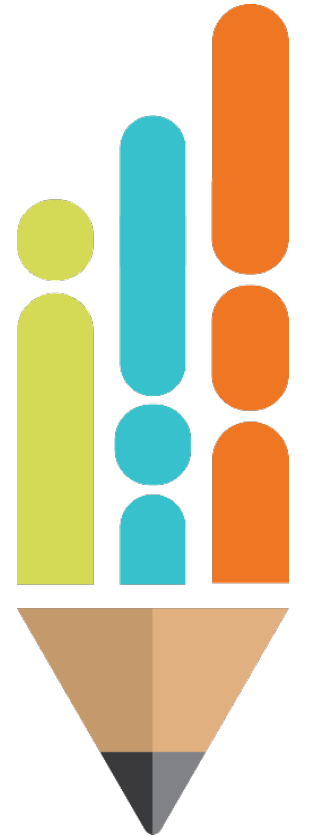
Absolute cut-offs: Achievement results aligned directly to letter grades, regardless of performance compared to other schools. (For example, schools with an overall achievement score of above X receive a letter grade of B.)

If the group chooses Absolute cut-offs, what are score ranges that apply to each letter grade? (For example, achievement scores between X and Y receive a D.)

OR

Distribution: Performance of each school is measured relative to all schools. (For example, schools performing in the top X% of schools in the state receive a letter grade of an A.)

If the group chooses Distribution, what letter grade rating should be assigned to an average performing school? Then, where do we draw the lines for percentile range of schools to be represented by each letter grade?



Prompt 1: Which Subjects?

- Which subject areas should be included in the achievement metric?

All Tested Subjects

OR

A Subset of Tested Subjects

- If a subset, which ones?

- _____
- _____
- _____
- _____



Reference for Prompt 1: Which Subjects?

For reference, here is a list of all subjects with annual, statewide standardized TCAP tests:

Grades 3-5

- English Language Arts
- Mathematics
- Science

Grades 6-8

- English Language Arts
- Mathematics
- Science
- Social Studies

EOC – End of course exams

- Biology
- US History
- English 1
- English 2
- Algebra 1
- Algebra 2
- Geometry
- Integrated Math 1
- Integrated Math 2
- Integrated Math 3



Prompt 2: Which Weights?

- How should subjects be weighted?

_____ %	ENGLISH LANGUAGE ARTS
_____ %	MATHEMATICS
_____ %	SOCIAL STUDIES
_____ %	SCIENCE
100%	ALL SUBJECTS





Prompt 3: Applying letter grades to achievement

- Which approach to applying letter grades to achievement should be used?

- Absolute cut-offs:** Achievement results aligned directly to letter grades, regardless of performance compared to other schools. (For example, schools with an overall achievement score of above X receive a letter grade of B.)

If the group chooses Absolute cut-offs, what are score ranges that apply to each letter grade? (For example, achievement scores between X and Y receive a D.)

OR

- Distribution:** Performance of each school is measured relative to all schools. (For example, schools performing in the top X% of schools in the state receive a letter grade of an A.)

If the group chooses Distribution, what letter grade rating should be assigned to an average performing school? Then, where do we draw the lines for percentile range of schools to be represented by each letter grade?

Prompt 3: Applying letter grades to achievement

Absolute cut-offs:

- Measure of overall achievement performance of a school against a set grading scale
- If selected, must determine the grading scale to apply to each letter grade

OR

Distribution:

- Measure of school's percentile rank in overall achievement performance compared to other schools in Tennessee
- If selected, must determine what percentile rank ranges apply to each letter grade



Prompt 3: Applying letter grades to achievement

❑ Absolute cut-offs:

Overall Achievement Score		Letter Grade
____ %	____ %	A
____ %	____ %	B
____ %	____ %	C
____ %	____ %	D
____ %	____ %	F

❑ Distribution:

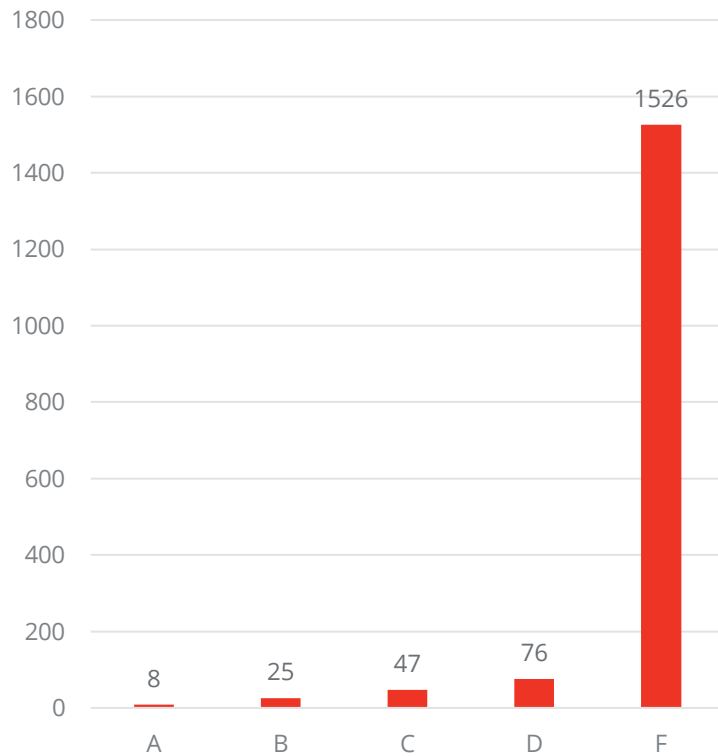
Achievement Percentile Rank		Letter Grade
____ %	____ %	A
____ %	____ %	B
____ %	____ %	C
____ %	____ %	D
____ %	____ %	F



Absolute Cut-offs: **Example**

'Traditional Letter Grade' Criterion

Applying 'School' Letter Grades to Achievement



'Letter Grade' Overall Achievement Score

A = >90%

B = 80% – 89%

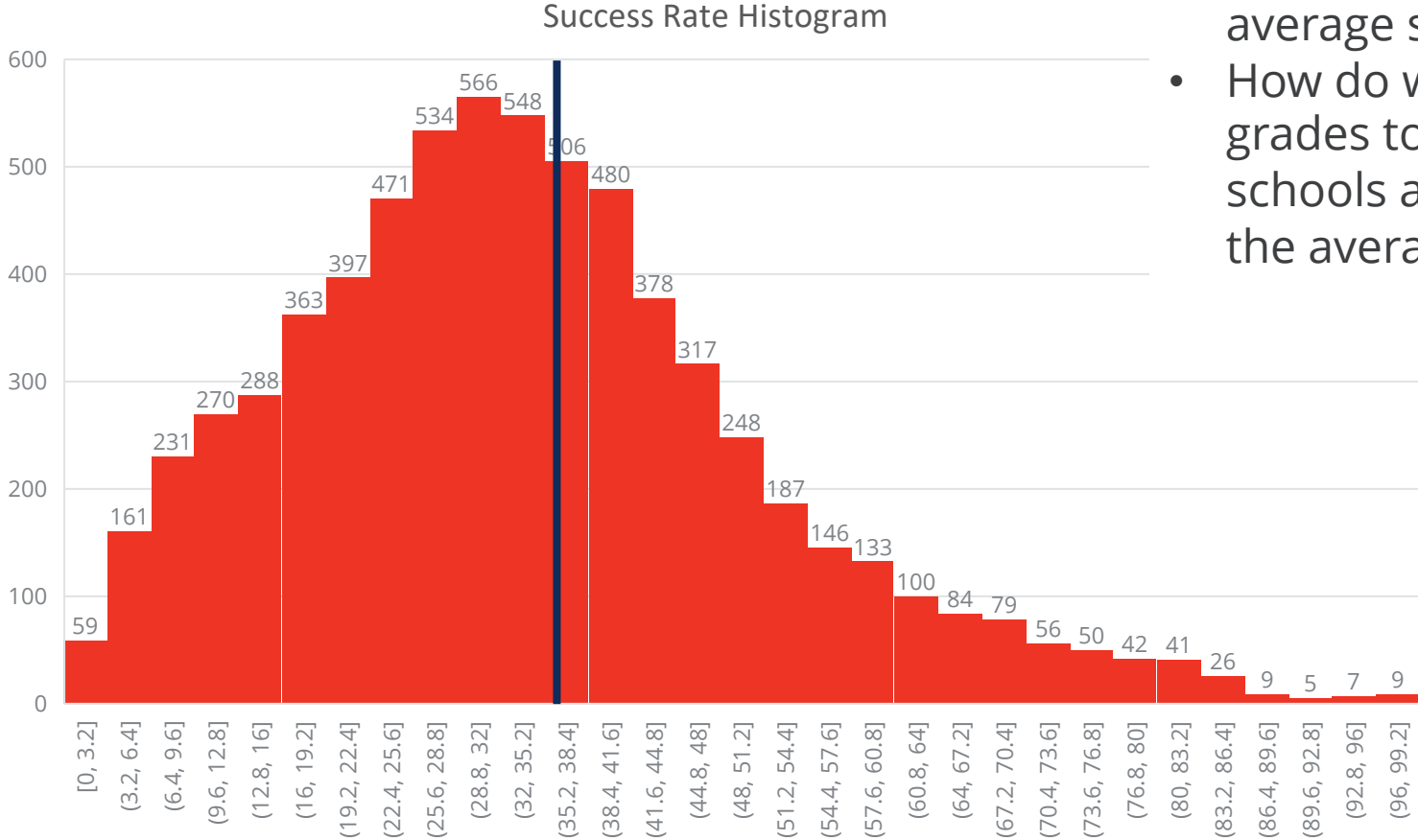
C = 70% – 79%

D = 60% – 69%

F = <60%



Distribution Approach

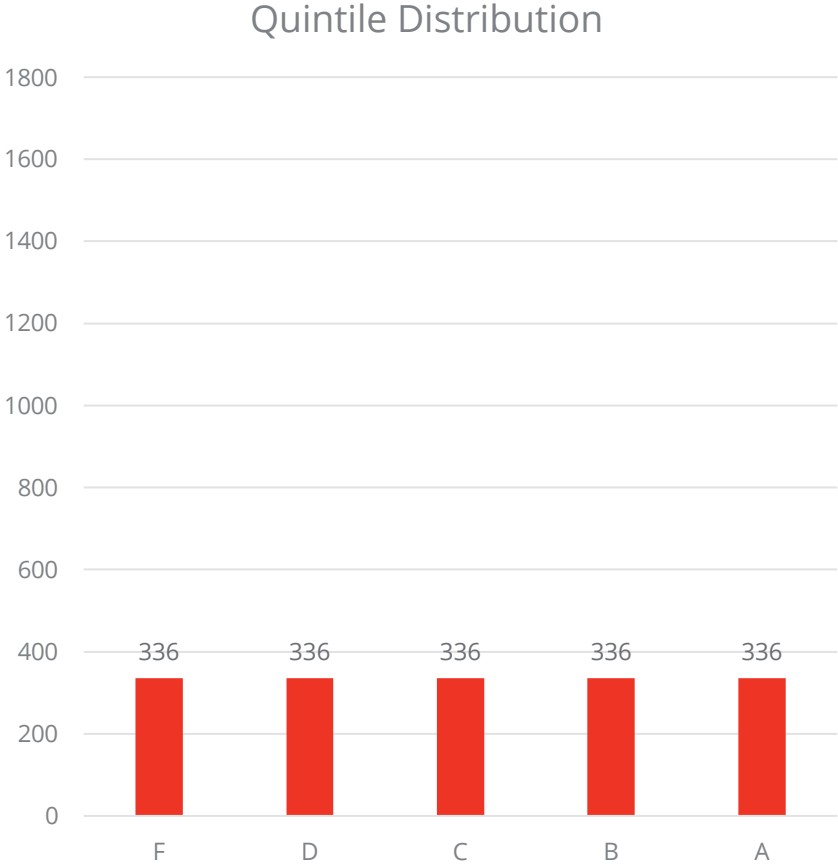


- What letter grade should be used to describe the average school?
- How do we use letter grades to differentiate the schools above and below the average line?



* Accountability Attribution Rules Applied

Distribution Approach: **Example** - Quintiles



- If letter grades were split evenly across the five categories, then letter grades would be represented as follows:

Percentile Rank Range	Letter Grade
81% - 100%	A
61% - 80%	B
41% - 60%	C
21% - 40%	D
0% - 20%	F



Breakout Discussions



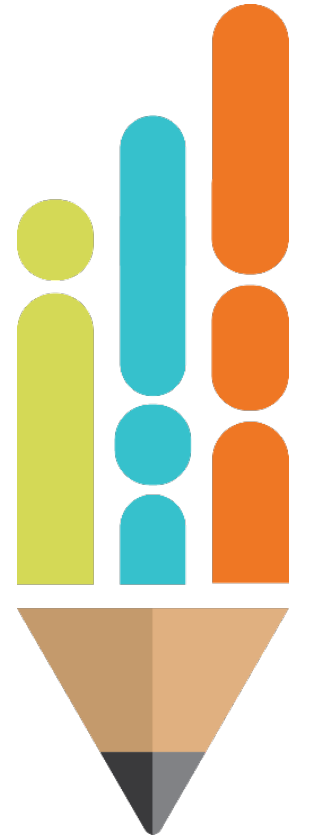
Breakout Discussions: Logistics

Breakout groups will have approximately one hour to discuss the three prompts.

The goal for each breakout group is to come to a consensus on each of the three prompts.

During the last half hour of this call, each group will share out their consensus decisions and a brief rationale for their decisions on the prompts. **Each breakout group will need to select one person to share their group's reflection.**

If time permits, we will open the floor for other items discussed in the breakout groups that could be beneficial to the Working Group.



Share Outs

Next Meeting





Meeting Schedule

- **Meeting 1: Introductions & Overview**
Thursday, October 5, 2023, from 3:00- 5:00 pm CT
- **Meeting 2: Required Component of the A-F Calculation: Achievement**
Tuesday, October 10, 2023, from 3:00- 5:00 pm CT
- **Meeting 3: Required Component of the A-F Calculation: Growth**
Thursday, October 12, 2023, from 3:00- 5:00 pm CT
- **Meeting 4: Required Component of the A-F Calculation: Other Indicators**
Monday, October 16, 2023, from 3:00- 5:00 pm CT
- **Meeting 5: Putting It All Together: Weighting**
Friday, October 20, 2023, from 3:00- 5:00 pm CT

All meetings are virtual via Microsoft Teams. All meetings will be recorded and posted on the department's website for transparency.





Homework for Meeting 3

1. Review public comment at tn.gov/education/SchoolLetterGrades
2. Review prompts for the topic at Meeting 3: **Growth**

This afternoon, the department will email you easy-to-access links, as well as this slide deck for Meeting 2, and prompts to help you prepare for Meeting 3.





Next Meeting: Thursday, October 12

**Email additional questions, comment, or input to
SchoolLetterGrades@tnedu.gov**

Permission is granted to use and copy these materials for non-commercial educational purposes with attribution credit to the "Tennessee Department of Education". If you wish to use these materials for reasons other than non-commercial educational purposes, please contact the Office of General Counsel at (615) 741-2921 or Joanna Collins (Joanna.Collins@tn.gov).

