

Emergency Services

| 2017-18 Program of Study | Level 1 | Level 2 | Level 3 | Level 4 |
|---------------------------|---------------------------------|--|--|---|
| Emergency Services | Health Science Education (5998) | Anatomy and Physiology (3251 or 5991) -or- Medical Therapeutics (5999) | Anatomy and Physiology (3251 or 5991) -or- Medical Therapeutics (5999) | Emergency Medical Services (5995) -or- Emergency Medical Services Practicum (6185) -or- Dual Enrollment Emergency Services (4100) |

Description

The **Emergency Services** program of study is designed to prepare students to pursue careers in the fields of emergency medicine. Upon completion, proficient students will be able to identify careers and features of the Emergency Medical Services (EMS) system, define the importance of workforce safety and wellness, maintain legal and ethical guidelines, correlate anatomy and physiology concepts to the patient with a medical or traumatic injury, and perform EMS skills with a high level of proficiency. If taught with an Emergency Medical Technician (EMT) instructor, students will be given the opportunity to sit for the National Emergency Medical Responder certification. Students who wish to enter the workforce will be well prepared to begin on the job training for 911 dispatching.

Job outlook

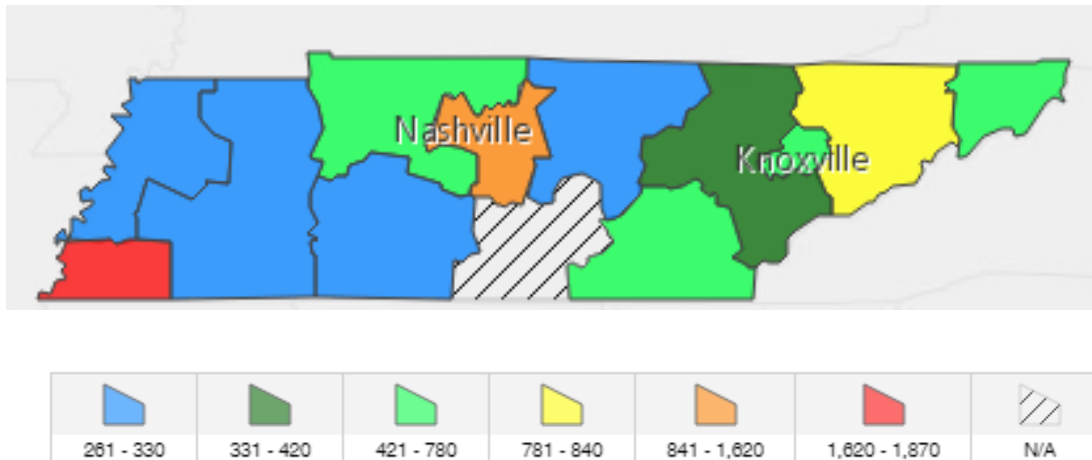
Employment of emergency medical technicians (EMTs) and paramedics is projected to grow 24 percent from 2014 to 2024, much faster than the average for all occupations, **Figure 3**. Emergencies, such as car crashes, natural disasters, and acts of violence, will continue to create demand for EMTs and paramedics with employment opportunities more favorable around larger cities, **Figure 1**. An increasing call volume due to the country's aging population is expected to keep job prospects high for EMTs and paramedics.¹

Figure 2 shows overall job prospects for dispatchers to be favorable, because the work of a dispatcher remains stressful and demanding, leading some applicants to seek other types of work.

¹ US News and World Report, Careers. (2016). *Best Health Care Support Jobs*. Retrieved from <http://money.usnews.com/careers/best-jobs/emergency-medical-technician-and-paramedic>

Students who have completed the emergency medicine program of study and have a robust portfolio will make excellent candidates for on the job training as a dispatcher. The majority of positions in emergency medicine will come from the need to replace the large number of dispatchers expected to transfer to other occupations or leave the labor force. Those with good communication skills and experience using computers should have the best job prospects.²

Figure 1. 2024 projected employment for Emergency Medical Technicians and Paramedics



² United States Department of Labor, Bureau of Labor Statistics. (2017, April 26). *Occupational Outlook Handbook, 2016-17 Edition*. Retrieved from <http://www.bls.gov/ooh/office-and-administrative-support/police-fire-and-ambulance-dispatchers.htm#tab-6>

Figure 2. Occupational Employment & Future Employment Outlook for Tennessee³

| Occupation | 2014 Projected Employment | 2024Projected Employment | Total 2014 - 2024 Employment Change | Annual Avg. Percent Change | Median Salary |
|---|---------------------------------|-----------------------------|--|-------------------------------------|------------------|
| Ambulance Driver & Attendants (Emergency Medical Responder) | 280 | 400 | 120 | 3.8% | \$22,150 |
| EMT Paramedic | 8060 | 10380 | 2320 | 2.6% | \$31,840 |
| Police, Fire, Ambulance Dispatcher | 2,750 | 3220 | 460 | 1.6% | \$33,290 |
| Emergency Management Director | 190 | 210 | 20 | 0.9% | \$72,000 |

*Note: Jobs4tn.gov groups all EMTs and Paramedics together to report employment projections

³ Tennessee Department of Labor and Workforce Development, Jobs4TN Online. (2016). *Employment Wage and Data*. Retrieved from <https://www.jobs4tn.gov>

Figure 3. State and national trends for EMT and Paramedics with positive projections 2014-24⁴

| | Employment | | Percent Change | Projected Annual Job Openings |
|--|------------|---------|----------------|-------------------------------|
| | 2014 | 2024 | | |
| National | | | | |
| Emergency Medical Technicians and Paramedics | 241,200 | 299,600 | 24% | 9,800 |
| Tennessee18 | | | | |
| Emergency Medical Technicians and Paramedics | 8,060 | 10,380 | 29% | 450 |

Postsecondary Opportunities

Eight of the 13 community colleges in Tennessee offer EMS training for EMT, Advanced EMT, and EMT paramedic. These programs are all offered as certificate programs, but paramedics may complete additional course work to earn an associate of applied science degree. Upon completion of the chosen certificate program, students must take and pass a certification exam.

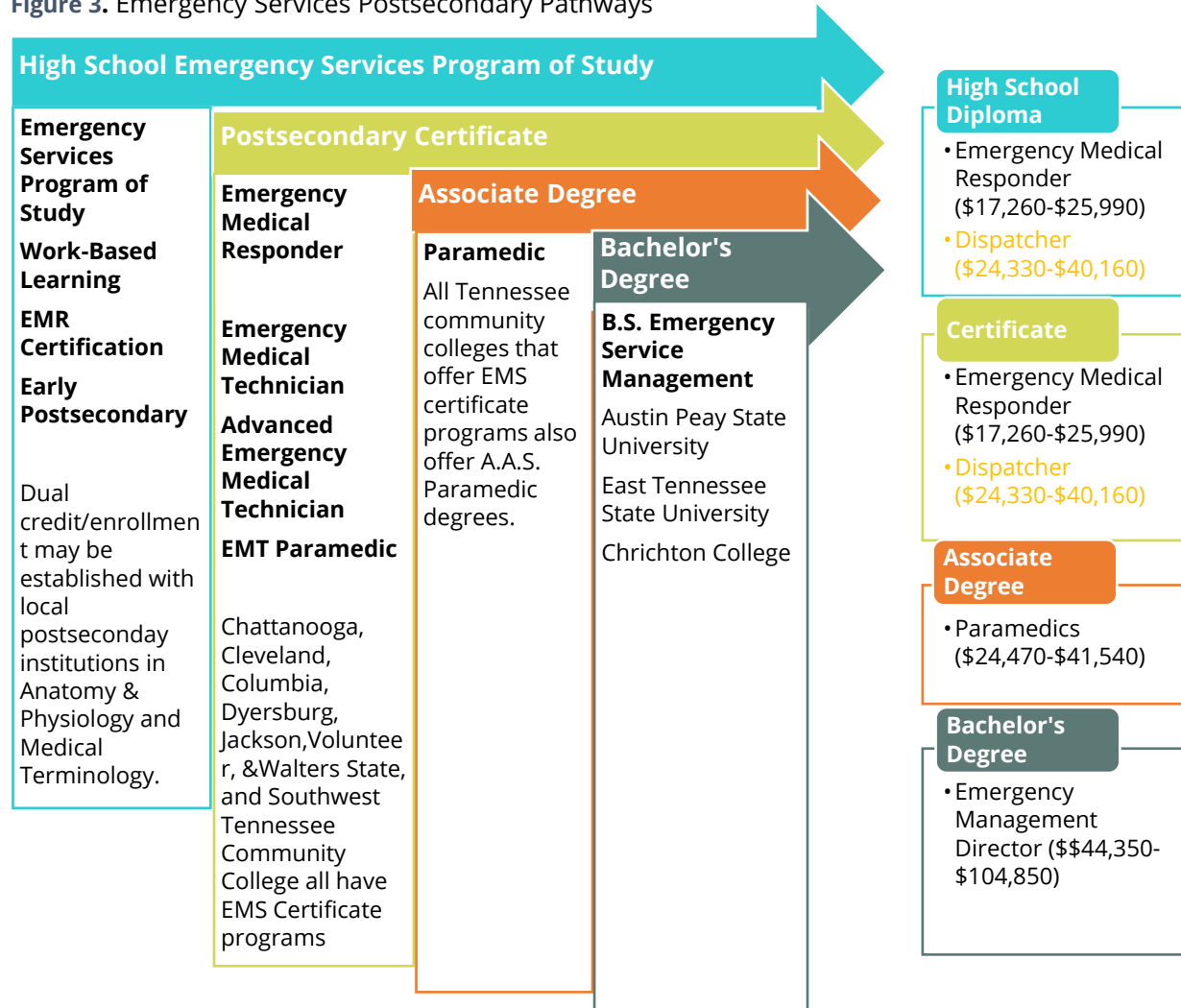
The National Registry of Emergency Medical Technicians (NREMT) certifies EMTs and paramedics. All levels of NREMT certification require completing a certified education program and passing the national exam. The national exam has both written and practical parts. ⁵

As shown in **Figure 3**, students wishing to pursue education beyond the level of paramedic may pursue a B.S. in Emergency Service Management. Nationally, employment opportunities for emergency service managers is projected to improve by eight percent.

⁴ United States Department of Labor, Employment and Training Administration. (2016). *Career One Stop*. Retrieved from <https://www.onetonline.org/link/summary/29-2041.00>

⁵ National Registry of Emergency Medical Technicians. (2016). About NREMT Examinations. Retrieved from https://www.nremt.org/nremt/about/about_exams.asp

Figure 3. Emergency Services Postsecondary Pathways



Current Secondary Landscape

In the 2014-15 school year, 89 schools in Tennessee offered courses in the Emergency Medical Services program of study. Of the 13,624 students who were enrolled in a Health Science course, 2241 students were enrolled in Emergency Medical Services, the current Level 4 course. The number of schools offering an Emergency Services program has increased to 97 through SY 2017-18, and should increase as more districts add industry certification opportunities for their students. **Figure 4** shows the open enrollment analysis for 2014-15 to 2017-18 as well student enrollment for 2013-14 through 2016-17 in the Emergency Services POS.

Figure 4 Open Enrollment Analysis⁶

| SY | Emergency Services Programs of Study |
|---------|--------------------------------------|
| 2013-14 | No data |
| 2014-15 | 89 |
| 2015-16 | 77 |
| 2016-17 | 97 |
| 2017-18 | 97 |

Student Enrollment

| SY | Health Science Education | Anatomy and Physiology | Emergency Medical Services | Medical Terminology |
|---------|--------------------------|------------------------|----------------------------|---------------------|
| 2013-14 | 13622 | 3914 | 2241 | 573 |
| 2014-15 | 13624 | 3782 | 1730 | 1257 |
| 2015-16 | 14673 | 3990 | 1583 | 1324 |
| 2017-18 | 17250 | 4338 | 1668 | 1407 |

Emergency Services Concentrators

| SY | Emergency Services Concentrators |
|---------|----------------------------------|
| 2013-14 | 0 |
| 2014-15 | 629 |
| 2015-16 | 657 |

⁶ Tennessee Department of Education. (2017). *Student Enrollment Data*. Retrieved from Author's calculation of student enrollment data.

Recommendations

No changes are recommended.

| 2018-19 Program of Study | Level 1 | Level 2 | Level 3 | Level 4 |
|--------------------------------|---------------------------------|--|--|---|
| Emergency Services | Health Science Education (5998) | Anatomy and Physiology (3251 or 5991) -or- Medical Therapeutics (5999) | Anatomy and Physiology (3251 or 5991) -or- Medical Therapeutics (5999) | Emergency Medical Services (5995) -or- Emergency Medical Services Practicum (6185) -or- Dual Enrollment Emergency Services (4100) |

References

National Registry of Emergency Medical Technicians. (2016). About NREMT Examinations. Retrieved from https://www.nremt.org/nremt/about/about_exams.asp

Tennessee Department of Education. (2015). Student Enrollment Data. Retrieved from Author's calculation of student enrollment data.

Tennessee Department of Labor and Workforce Development, Jobs4TN Online. (2016). *Employment Wage and Data*. Retrieved from <https://www.jobs4tn.gov>

United States Department of Labor, Employment and Training Administration. (2016). *Career One Stop*. Retrieved from <https://www.onetonline.org/link/summary/29-2041.00>

United States Department of Labor, Employment and Training Administration. (2016). Occupational Outlook Handbook, 2016-17 Edition, Retrieved from <http://www.bls.gov/ooh/office-and-administrative-support/police-fire-and-ambulance-dispatchers.htm#tab-6>

US News and World Report, Careers. (2016). Best Health Care Support Jobs. Retrieved from <http://money.usnews.com/careers/best-jobs/emergency-medical-technician-and-paramedic>