



2022-23 School Letter Grade Overview and Appeals Process

Accountability & Reporting Team

Office of Districts and Schools

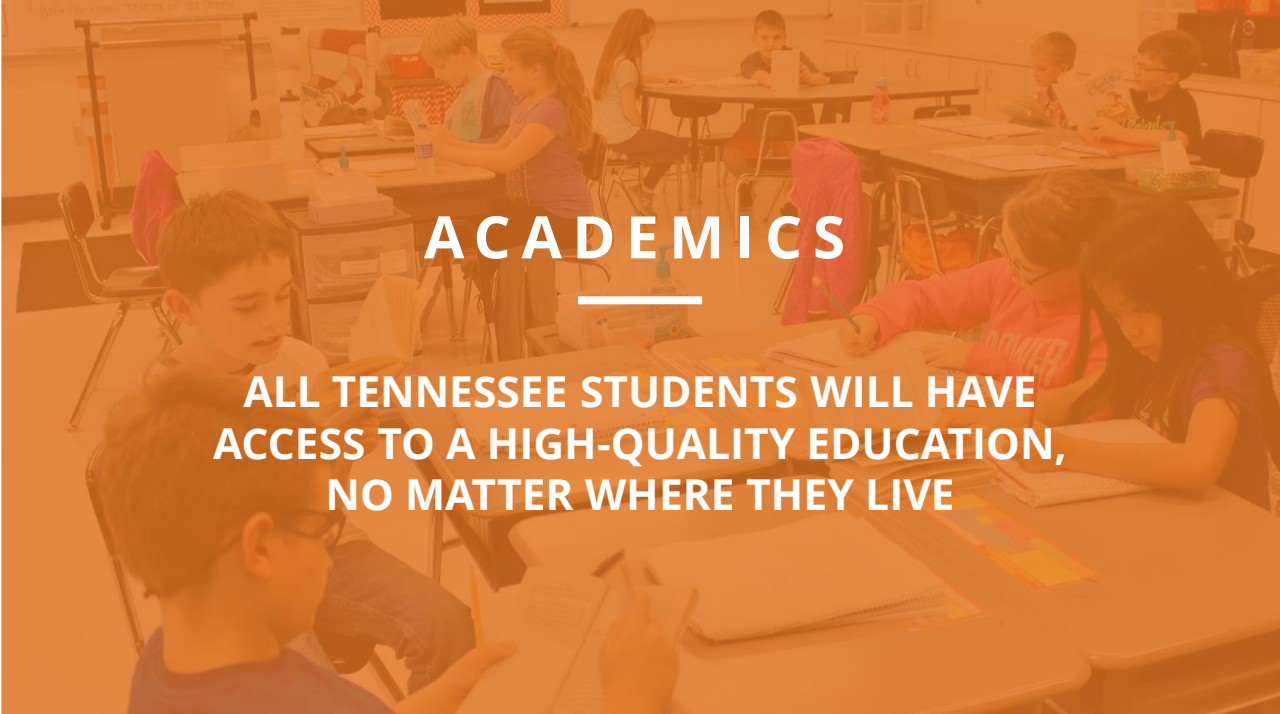
December 12, 2023





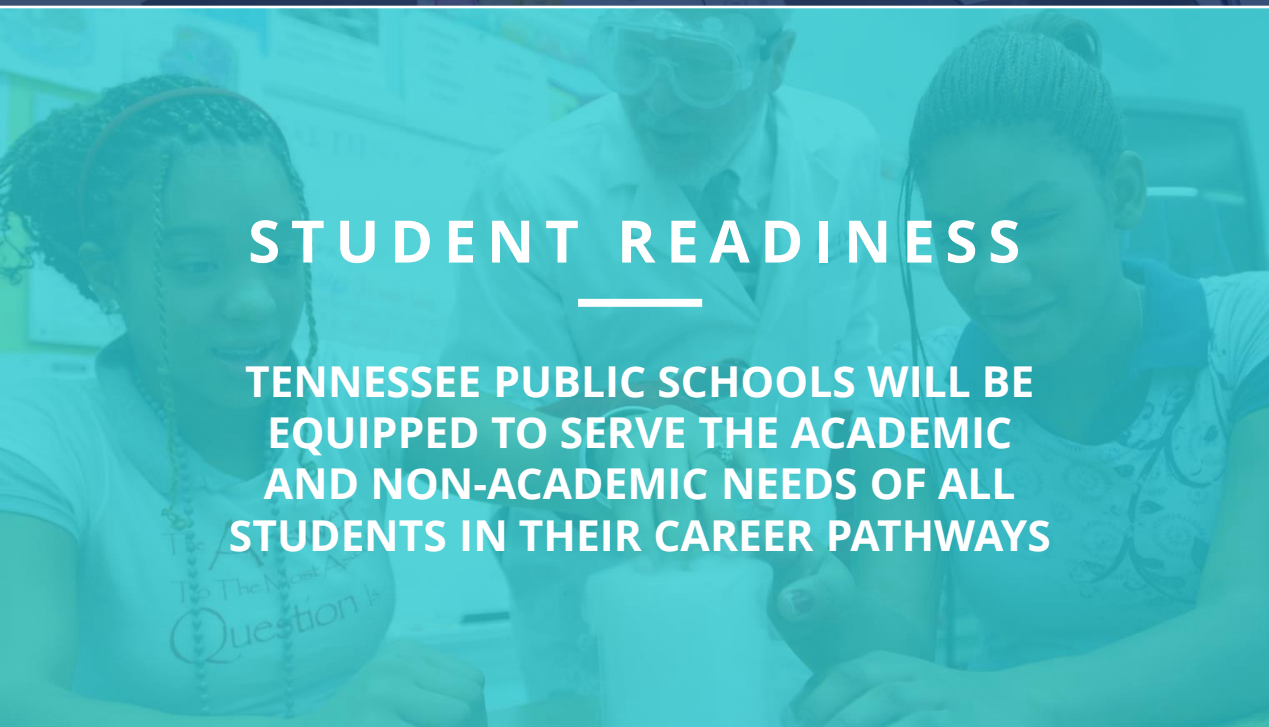
BEST FOR ALL

We will set all students on a path to success.



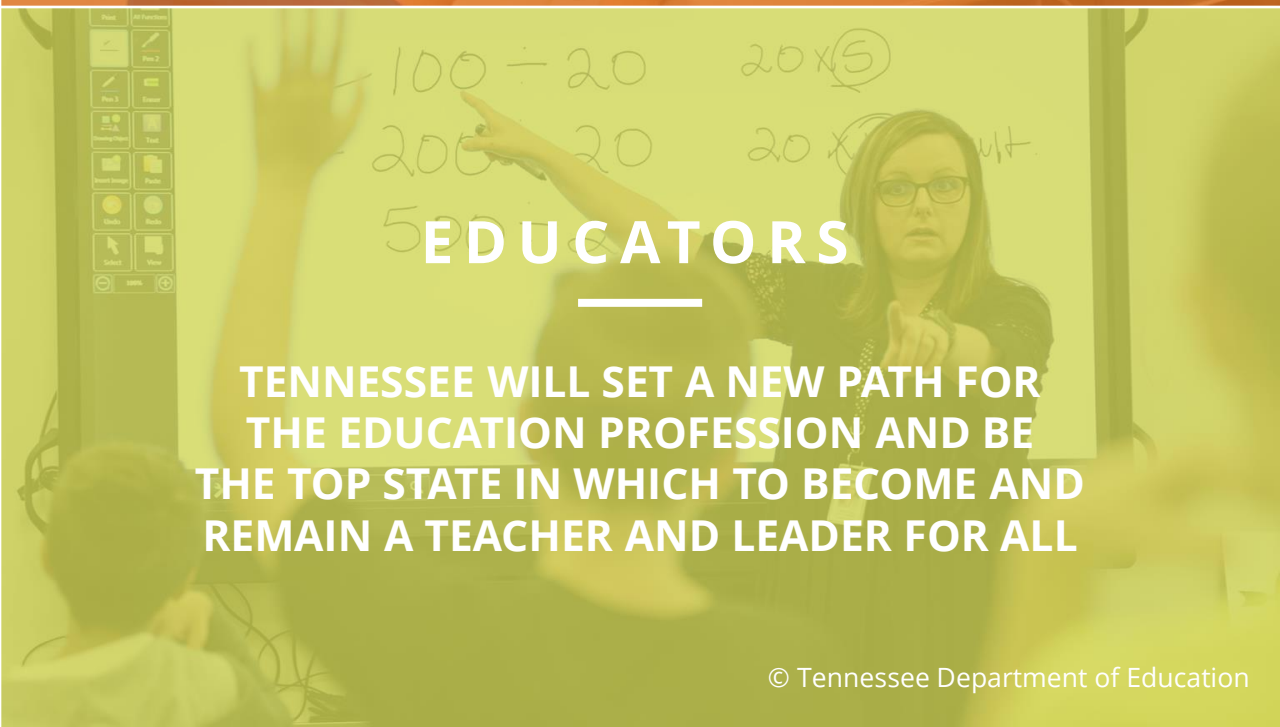
ACADEMICS

ALL TENNESSEE STUDENTS WILL HAVE ACCESS TO A HIGH-QUALITY EDUCATION, NO MATTER WHERE THEY LIVE



STUDENT READINESS

TENNESSEE PUBLIC SCHOOLS WILL BE EQUIPPED TO SERVE THE ACADEMIC AND NON-ACADEMIC NEEDS OF ALL STUDENTS IN THEIR CAREER PATHWAYS



EDUCATORS

TENNESSEE WILL SET A NEW PATH FOR THE EDUCATION PROFESSION AND BE THE TOP STATE IN WHICH TO BECOME AND REMAIN A TEACHER AND LEADER FOR ALL



Agenda

- Overview
 - Law
 - Goals and Process
- Methodology
 - Indicators and Weights
 - Calculation
- Data Review and Appeals
 - Data files
 - Appealable vs. Non-appealable Issues
 - Timeline
 - Submission process
- Q&A
- Feedback
 - Tell us how we can better support you via [exit ticket](#) (less than 1 min).



Overview

- Law
- Goals and Process

Legal Requirements: T.C.A. 49-1-228

- a. The department of education shall develop a school grading system that annually assigns A, B, C, D, and F letter grades to schools based on:
 - 1. Student performance on the Tennessee comprehensive assessment program (TCAP) tests or end-of-course exams;
 - 2. Student growth as indicated by Tennessee Value-Added Assessment System (TVAAS) data or data from other measures of student growth; and
 - 3. Other outcome indicators of student achievement that the department finds to be reliable measures of school performance.
- b. The department of education shall include each school's A, B, C, D, or F grade on the state report card.
- c. Implementation of the school grading system shall begin in the 2017-2018 school year; provided, however, prior to implementation, the state board shall review the grading scale developed by the department.
- d. The department shall provide notice of the adopted grading scale to each LEA prior to the start of the 2017-2018 school year.
- e. Notwithstanding subsection (a), student performance and student growth data from the TNReady assessments administered in the 2017-2018 school year shall not be used to assign a letter grade to a school pursuant to this section.
- f. Notwithstanding subsections (a)-(c), student performance and student growth data from the Tennessee comprehensive assessment program (TCAP) tests, which include, but are not limited to, TNReady assessments, English learner assessments, alternate TCAP assessments, and end-of-course examinations, administered in the 2019-2020 school year shall not be used to assign a letter grade to a school, unless the use results in a higher letter grade for the school.
- g. 1) If eighty percent (80%) or more of an LEA's or public charter school's students enrolled in grades three through twelve (3-12) participate in the Tennessee comprehensive assessment program (TCAP) tests administered in the 2020-2021 school year, then, notwithstanding subsections (a)-(c), student performance and student growth data generated from the TCAP tests administered in the 2020-2021 school year shall not be used to assign a letter grade to a school.
 - 2)The commissioner of education may, at the commissioner's discretion, grant an LEA or public charter school a waiver from the eighty-percent-participation requirement in subdivision (g)(1).
- a. The department shall not issue letter grades or any other summative ratings for schools eligible for the accountability protections in subdivision (g)(1) or schools that receive a waiver from the commissioner pursuant to subdivision (g)(2) in the state report card for the 2020-2021 school year; provided, that the department shall provide student performance and student growth data to LEAs, and as required by federal law.



TDOE's Goals & Process for Implementation

- Produce school **ratings that are clear and meaningful to families** who already have expectations for **outcomes performance** as represented by a letter grade
- **Recognize accomplishments** in academic achievement, growth and any other indicators
- **Identify areas of need or opportunities** for improvement to support planning and investments at the local level

...all in partnership with Tennesseans across the state.

1. Public Town Halls

2. Public Comment

3. A-F Working Group

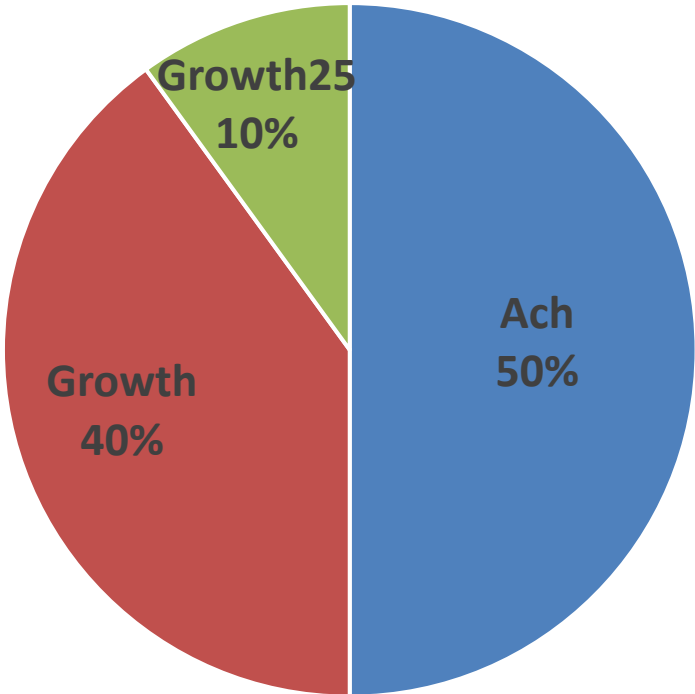
4. Calculation & Letter Grades

Methodology

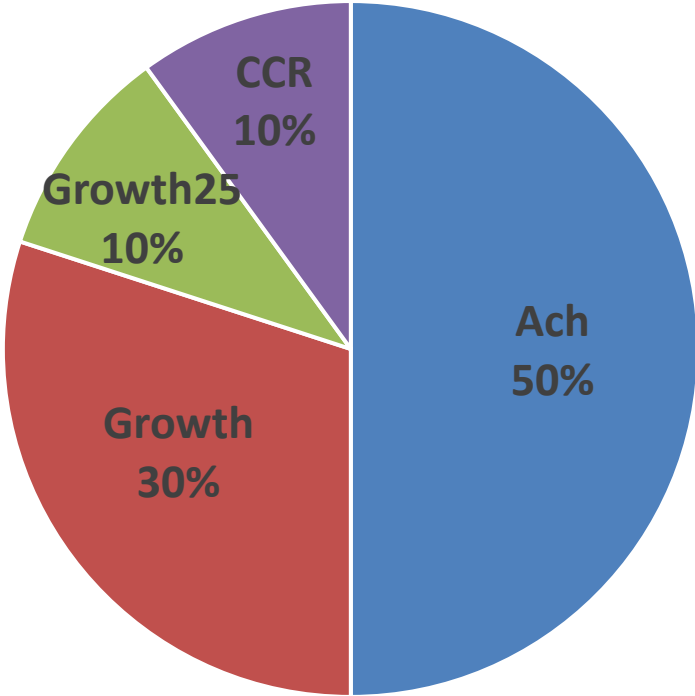
Indicators, Weights & Calculation

School Letter Grade Model: Indicators and Weights

K-8 Schools



High School



K-8 School

Fewer than 30 students in the *most recent graduating cohort*

High School

30 or more students in the *most recent graduating cohort*

Ach	Achievement
Growth	TVAAS All Subjects Composite
Highest Need Students (Grwoth25)	TVAAS All Subjects Composite for Highest Need Students (Growth of bottom 25 percent)
CCR	College and Career Readiness

Achievement Indicator

- All tested subjects are included
 - **ELA:** G3-8 TCAP, English I, English II, MSAA tests
 - **Math:** G3-8 TCAP, Algebra I/Integrated Math I, Geometry/Integrated Math II, Algebra II/Integrated Math III, MSAA tests
 - **Science:** G3-8 TCAP, Biology, TCAP-Alt tests
 - **Social Studies:** G3-8 TCAP, US History, TCAP-Alt tests,
- Substitution for US History and Biology (Consult [Protocol](#) Section 2.1.1.4)
 - Only students who took substitutable AP, IB, CIE, SDC courses without any existing records of enrollment in US History or Biology are eligible
 - Substitutable tests are included in the success rate calculation **ONLY IF** at least 95% of the substitution eligible students enrolled in the substitutable course are tested



Achievement Indicator

- Heavier weights for ELA and math than science and social studies
- Grade band specific calculation to address concerns on grade configuration variation
- Lower success rates among high schools
- Use 2021-22 data as baseline and hold the cut-scores constant for a period of time
- Maintain existing business rules when possible
 - Students are attributed to schools in which they spent at least 50% of the school year
 - Success rates are adjusted when not meeting 95% participation rate
 - A participation rate of 94.1% or higher but less than 95% is rounded up to 95%



Achievement Indicator

Step 1. Grade-band Subject Success Rate

ELA

Math

Science

Social studies

Step 2. Grade-band Success Rate

G3-5 Success Rate

G6-8 Success Rate

G9-12 Success Rate

Step 3. Grade-band Achievement Indicator

G3-5 Achievement Score

G6-8 Achievement Score

G9-12 Achievement Score

Step 4. Achievement Indicator Score

$(G3-5 \text{ Achievement Score} \times \text{pct_G3-5 enrollment}) + (G6-8 \text{ Achievement Score} \times \text{pct_G6-8 enrollment}) + (G9-12 \text{ Achievement Score} \times \text{pct_G9-12 enrollment})$

Step 1. Grade-band Subject Success Rates

- Success rates = $\frac{\# \text{ met or exceeded expectations (tests of interest)}}{\# \text{ valid tests (tests of interest)}}$
- Grade-band subject success rates (i.e., G3-5, G6-8, G9-12):
 - Subject success rates are calculated for each subject by grade band
 - Must meet a minimum n count of 30 to receive a subject success rate within the grade band

Tested Grade Levels Served between...	Grade-band Subject Success Rates										
	G3-5			G6-8				G9-12			
	ELA	Math	Science	ELA	Math	Science	Social Studies	ELA	Math	Science	Social Studies
3 rd and 5 th grade	Yes	Yes	Yes								
6 th and 8 th grade				Yes	Yes	Yes	Yes				
9 th and 12 th grade								Yes	Yes	Yes	Yes
3 rd and 8 th grade	Yes	Yes	Yes	Yes	Yes	Yes	Yes				
3 rd and 12 th grade	Yes	Yes	Yes	Yes	Yes	Yes	Yes	Yes	Yes	Yes	Yes
6 th and 12 th grade				Yes	Yes	Yes	Yes	Yes	Yes	Yes	Yes

Step 1. Grade-band Subject Success Rates

- Success rate adjustment is applied when grade-band subject participation rate is less than 95%

– Adjusted subject SR = $\frac{\# \text{ met or exceeded expectations (subject tests)}}{\# \text{ adjusted valid tests (subject tests)}}$

– *Adjusted valid tests = (# enrolled in tested subject courses * 0.95)*

Participation Rate for G3-5 ELA	# enrolled G3-5 ELA count	# valid G3-5 ELA tests	# G3-5 ELA met or exceeded expectations	G3-5 ELA Success Rate	# Adjusted valid G3-5 ELA tests	Adjusted G3-5 ELA success rate
86%	100	86	43	50%	100 x 0.95 = 95	43/95 = 45.3%
76%	100	76	38	50%	100 x 0.95 = 95	38/95 = 40.0%
66%	100	66	33	50%	100 x 0.95 = 95	33/95 = 34.7%

Step 2. Grade-band Success Rates

- Subject weights

G3-5 Success Rate	G6-8 Success Rate	G9-12 Success Rate
ELA (40%) Math (40%) Science (20%)	ELA (35%) Math (35%) Science (15%) Social Studies (15%)	Proportional Weight

- Must have ELA and Math success rates to generate a grade-band success rate
 - For G9-12 Success Rate, two success rates are calculated
 - G9-12 success rate without substitution
 - G9-12 with substitution
- } Higher success rate is used

Grade-band Success Rate: Weight Redistribution

	Original Weights	Missing Subject SR	Weights Distribution
G3-5 SR	ELA (40%) Math (40%) Science (20%)	ELA	Math (70%) / Science (30%)
		Math	ELA (70%) / Science (30%)
		Science	ELA (50%) / Math (50%)
		ELA & math	Not eligible to receive a success rate
		ELA & Science	Math (100%)
		Math & science	ELA (100%)
G6-8 SR	ELA (35%) Math (35%) Science (15%) Social Studies (15%)	ELA	Math (50%) / Science (25%) / Social Studies (25%)
		Math	ELA (50%) / Science (25%) / Social Studies (25%)
		Science	Math (40%) / ELA (40%) / Social Studies (20%)
		Social Studies	Math (40%) / ELA (40%) / Science (20%)
		ELA & math	Not eligible to receive a success rate
		ELA & science	Math (70%) / Social studies (30%)
		ELA & social studies	Math (70%) / Science (30%)
		Math & science	ELA (70%) / Social studies (30%)
		Math & social studies	ELA (70%) / Science (30%)
		Science & social studies	Math (50%) / ELA (50%)
G9-12 SR	Proportional Distribution (Not eligible to receive a success rate if missing math and ELA tests)		

Grade-band Achievement Indicator

- 2021-22 data as baseline
 - Grade-band success rates were calculated to establish cut scores based on quintile methodology
 - Substitution was not included

Achievement Indicator Score	Success Rate Cut Scores		
	G3-5	G6-8	G9-12
1	0.0-19.9	0.0-17.2	0.0-14.3
2	20.0-30.4	17.3-27.3	14.4-23.9
3	30.5-38.6	27.4-36.0	24.0-31.6
4	38.7-49.4	36.1-45.3	31.7-40.0
5	49.5-100.0	45.4-100.0	40.1-100.0

Achievement Indicator

- Achievement indicator score is the sum of the weighted grade-band achievement indicator score
- Use Case—School A serves students from grade 5 to 8. 10% of the students are in grade 5 and 90% are in grades 6-8. The G3-5 success rate is 40%, and the G6-8 success rate is 30. What is the achievement indicator score?
 - What is the G3-5 Achievement score?
 - Answer: 4
 - What is the G6-8 Achievement score?
 - Answer: 3
 - What is the Achievement score?
 - Answer: $(4 \times 0.10) + (3 \times 0.90) = 3.1$

Achievement Indicator Score	Success Rate Cut Scores		
	G3-5	G6-8	G9-12
1	0.0-19.9	0.0-17.2	0.0-14.3
2	20.0-30.4	17.3-27.3	14.4-23.9
3	30.5-38.6	27.4-36.0	24.0-31.6
4	38.7-49.4	36.1-45.3	31.7-40.0
5	49.5-100.0	45.4-100.0	40.1-100.0

Achievement Indicator

- Use Case—School B serves students from grade 3 to 12. What is the Achievement indicator score for School B?

	Grade 3-5	Grade 6-8	Grade 9-12
Enrollment	25%	50%	25%
Success Rate	38%	25%	25%

- What is the G3-5 Achievement score?
 - Answer: 3
- What is the G6-8 Achievement score?
 - Answer: 2
- What is the G9-12 Achievement score?
 - Answer: 3
- What is the Achievement score?
 - Answer: $(3 \times 0.25) + (2 \times 0.50) + (3 \times 0.25) = 2.5$

Achievement Indicator Score	Success Rate Cut Scores		
	G3-5	G6-8	G9-12
1	0.0-19.9	0.0-17.2	0.0-14.3
2	20.0-30.4	17.3-27.3	14.4-23.9
3	30.5-38.6	27.4-36.0	24.0-31.6
4	38.7-49.4	36.1-45.3	31.7-40.0
5	49.5-100.0	45.4-100.0	40.1-100.0

Achievement Indicator

Step 1. Grade-band Subject Success Rate

ELA

Math

Science

Social studies

Step 2. Grade-band Success Rate

G3-5 Success Rate

G6-8 Success Rate

G9-12 Success Rate

Step 3. Grade-band Achievement Indicator

G3-5 Achievement Score

G6-8 Achievement Score

G9-12 Achievement Score

Step 4. Achievement Indicator Score

$(G3-5 \text{ Achievement Score} \times \text{pct_G3-5 enrollment}) + (G6-8 \text{ Achievement Score} \times \text{pct_G6-8 enrollment}) + (G9-12 \text{ Achievement Score} \times \text{pct_G9-12 enrollment})$

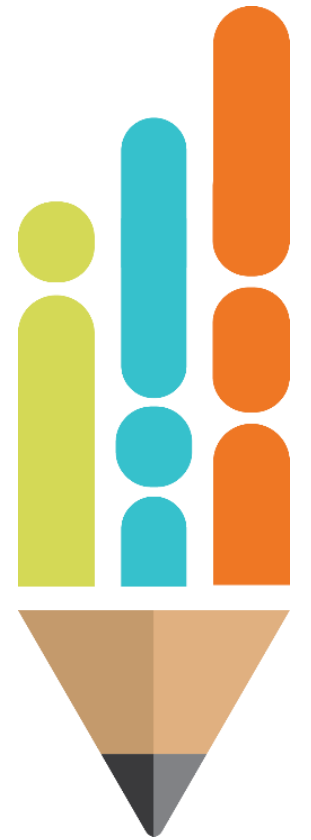
Growth and Growth25 Indicators

- Growth = TVAAS All Subjects Composite
- Growth25 = TVAAS All Subjects Composite for the highest need students (the bottom 25%)
- All tested subjects are included with few exceptions
 - ELA (i.e., TCAP ELA 3-8, English I, English II)
 - Math (i.e., TCAP math 3-8, Algebra I/Integrated Math I, Geometry/Integrated Math II, Algebra II/Integrated Math III)
 - Science (i.e., TCAP science 5-8, biology)
 - Social studies (i.e., TCAP social studies 6-8, U.S. History)
- Exceptions are:
 - Grade 3 and Grade 4 science tests
 - Substitutable courses/tests
 - TCAP Alt assessments
- 50 percent enrollment attribution rule is applied



Additional Clarification on Growth²⁵

- Who are included in the bottom 25%?
 - For the gain model, students are identified based on their average score—average of the current and prior-year NCE values.
 - For the predictive model, students are identified based on their predicted score.
 - Students are selected within a **school/subject/grade** or **school/course** if their average NCE score or predicted score is in the lowest 25 percent.
 - If the 25 percent threshold does not provide an integer, the model will include the next lowest-score student to have at least 25 percent.
- What is the minimum n count requirement for receiving a score?
 - Gain model = 6 per school/year/subject/grade
 - Predictive model = 10 per school/year/course



Interpretation of Growth and Growth25 Scores

Growth/ Growth25 Score	TVAAS All Subjects Composite Level / TVAAS All Subjects Composite Level for the Bottom 25 Percent
1	Level 1
2	Level 2
3	Level 3
4	Level 4
5	Level 5

- Level 5. There is significant evidence that students made more growth than expected.
- Level 4. There is moderate evidence that students made more growth than expected.
- Level 3. There is evidence that students made growth as expected.
- Level 2. There is moderate evidence that students made less growth than expected.
- Level 1. There is significant evidence that students made less growth than expected.

For Growth25, students = students who are identified as the bottom 25 percent



College and Career Readiness Indicator (Only for High Schools)

- College and Career Readiness (CCR) indicator is measured by the CCR rate:

$$\frac{\text{\# graduates earning CCR status}}{\text{\# students in the graduating cohort}} * 100$$

- # students in the graduating cohort = students in the 2023 graduating cohort
- # graduates earning CCR status
 - Must meet all graduation requirements per Tennessee State Board of Education (SBE) [Graduation Requirements Rule](#) and [High School Policy 2.103](#) **AND**
 - Meet one of the following CCR pathways
 - Meets or exceeds a composite of 21 (ACT) or 1060 (SAT)
 - Earns a score of 31 or higher on the ASVAB AFQT
 - Earns a Tier 3 IC **OR** earns a Tier 2 IC and at least one other IC (any tier is acceptable for the second credential)
 - Earns one or more “postsecondary credits”



CCR Indicator (Only for High Schools)

- 2021-22 data as baseline
 - 2022 pre-appeal CCR Rate + 75% of the difference between 2023 pre- and post-appeal CCR rate
- Cut scores based on quintile methodology

CCR Indicator Score	CCR Rate Cut Scores
1	0.0-31.4%
2	31.5-43.5%
3	43.6-54.4%
4	54.5-65.6%
5	65.7-100.0%



Letter Grade: Eligibility

- The following Schools are **not** eligible for a letter grade
 - Tennessee School for the Blind (schools with an instructional type of 7 in the School Directory)
 - Tennessee School for the Deaf (schools with an instructional type of 7 in the School Directory)
 - Adult high schools (schools with an instructional type of 9 in the School Directory)
 - Alternative schools (schools with an instructional type of 8 in the School Directory)
 - CTE schools (schools with an instructional type of 6 in the School Directory)
 - Closed schools (closed between May 31 and August 31).
 - Schools serving kindergarten to 2nd grade students only
 - Schools with insufficient n count to generate a score for the Achievement indicator **or** a Growth score



Letter Grade Calculation and Mapping

Indicators	K8 Schools	High Schools
Achievement	50%	50%
Growth	40%	30%
Growth25	10%	10%
CCR	0%	10%

- K-8 School Letter Grade Score = (Achievement Indicator Score x 0.50)+(Growth Score x 0.40)+(Growth25 Score x 0.1)
- High School Letter Grade Score = (Achievement Indicator Score x 0.50)+(Growth Score x 0.30)+(Growth25 x 0.1)+(CCR Score x 0.1)
- A-F Cut Scores (letter grade score is truncated to one decimal place prior to mapping)

A	4.5-5.0
B	3.5-4.4
C	2.5-3.4
D	1.5-2.4
F	1.0-1.4



Letter Grade: Indicator Weight Redistribution

School Type	Missing Indicator	Weights Distribution
K-8	Achievement OR Growth	Not Eligible for Letter Grade
	Growth25	Achievement (50%) Growth (50%)
HS	Achievement OR Growth	Not Eligible for Letter Grade
	Growth25	Achievement (50%) Growth (40%) CCR (10%)
	CCR	Achievement (50%) Growth (40%) Growth25 (10%)
	Growth25 & CCR	Achievement (50%) Growth (50%)



Appeals

- Data files
- Appealable vs. Non-appealable Issues
- Timeline
- Submission process

Letter Grade Data Files

- Four data files are uploaded on the accountability application
 - Letter Grade Summary (**appealable**)
 - TVAAS Bottom 25 Percent Student List (**non-appealable**)
 - Substitution Student-level Data (**non-appealable**)
 - Substitution School-level Data (**non-appealable**)
- File layouts are accessible on the accountability application
- Appealable issues in the Letter Grade Summary data file
 - Department calculation errors (documentation as needed)
 - Systematic errors (documentation as needed)



Letter Grade Summary Data File Metrics

Metrics	Definition
Grade-band Subject Success Rates	
G3-5 ELA SR G3-5 math SR G3-5 science SR	Subject success rates for students from grade 3 to 5 Note. adjusted success rates are used if the participation rate was less than 95%.
G6-8 ELA SR G6-8 math SR G6-8 science SR G6-8 social studies SR	Subject success rates for students from grade 6 to 8 Note. adjusted success rates are used if the participation rate was less than 95%.
G9-12 ELA SR G9-12 math SR G9-12 science SR G9-12 social studies SR G9-12 science SR_w_sub G9-12 social studies SR_w_sub	Subject success rates for students from grade 9 to 12; Note. G9-12 science SR_w_sub and G9-12 social studies SR_w_sub are the success rates with substitution added. Note. adjusted success rates are used if the participation rate was less than 95%.

Letter Grade Summary Data File Metrics

Metrics	Definition
Grade-band Subject Participation Rates	
G3-5 ELA PR G3-5 math PR G3-5 science PR	Subject participation rates for students from grade 3 to 5
G6-8 ELA PR G6-8 math PR G6-8 science PR G6-8 social studies PR	Subject participation rates for students from grade 6 to 8
G9-12 ELA PR G9-12 math PR G9-12 science PR G9-12 social studies PR G9-12 science PR_w_sub G9-12 social studies PR_w_sub	Subject participation rates for students from grade 9 to 12 Note. G9-12 science PR_w_sub and G9-12 social studies PR_w_sub are the success rates with substitution added

Letter Grade Summary Data File Metrics

Metrics	Definition
Grade-band Success Rates	
G3-5 SR	Grade band success rate from grade 3 to 5
G6-8 SR	Grade band success rate from grade 6 to 8
G9-12 SR	Grade band success rate from grade 9 to 12
G9-12 SR_w_sub	Grade band success rates with substitution from grade 9 to 12
Achievement Indicator Scores	
G3-5 ach score	G3-5 Achievement indicator score
G6-8 ach score	G6-8 Achievement indicator score
G9-12 ach score	G9-12 Achievement indicator score Note. The higher success rate with or without substitution is used to calculate the achievement score for G9-12
Overall ach score	Overall Achievement indicator score
Grade-band Enrollment	
G3-5 pct enrollment	Percent of students enrolled are grade 3 to 5
G6-8 pct enrollment	Percent of students enrolled are grade 6 to 8
G9-12 pct enrollment	Percent of students enrolled are grad 9 to 12

Letter Grade Summary Data File Metrics

Metrics	Definition
Other Metrics	
Growth score	TVAAS All Subjects composite (non-appealable)
Growth25 score	TVAAS All subjects composite for the bottom 25 percent (non-appealable)
CCR score	CCR indicator score (non-appealable)
CCR rate	Percent of graduates meeting CCR status (non-appealable)
LG score	Overall letter grade score
LG	Final letter grade

- Additional data metrics

- Not used for letter grade calculation but will be reported on the Letter Grade Dashboard are appealable
- See [Protocol](#) Appendix C for additional data metrics
- See file layouts for all files released on the Accountability application

Appeals Timeline and Office Hours

■ Timeline

- December 12, 2023 Appeals window open
- December 18, 2023 Appeals window close by 11 p.m. CST
- December 20, 2023 Letter Grade Summary Data File final
Districts receive appeal response letter

■ Office Hours (11:30 a.m. - 12:30 p.m. CST):

- December 13: [Click here to join the meeting](#)
- December 14: [Click here to join the meeting](#)
- December 15: [Click here to join the meeting](#)



Submission Process

- Districts must submit the following to complete the appeals
 - An appeal letter with district letterhead signed by the director of schools
 - Detailed appeal reason and evidence to support each issue being appealed
 - Documentation to support district error is optional
 - Documentation to support systematic error is required
 - The appeal letter and appropriate documentation, as needed, must be submitted via the [2022-23 Letter Grade Appeals form](#)
 - Appeals letter saved following the naming convention
 - **###_AppealsLetter**” where ### is the district number
 - Supporting documentation (as needed following the naming convention)
 - **###_Documentation**” where ### is the district number
 - Provided for each issue being appealed, as needed



2022-23 School Letter Grade Appeals Form

Please complete all information below to submit an appeal. All appeals must be submitted by 11p.m. CT on December 18. Appeals submitted after that time will not be reviewed.

Hi, HsiangYeh. When you submit this form, the owner will see your name and email address.

* Required

1. District Number * [📄]

Select your answer

2. District Name * [📄]

Select your answer

3. Full Name of person submitting form * [📄]

Enter your answer

4. Email of person submitting form * [📄]

Enter your answer

5. Director of Schools Name * [📄]

Enter your answer

6. Director of Schools Email * [📄]

Enter your answer

7. Please select the data files for which you are appealing. * [📄]

School Letter Grade Summary

8. Please attach your appeals letter here. Letters must be saved as a pdf file to be submitted.

Please use the naming convention: "DistrictNumber_AppealsLetter"

Ex: 999_AppealsLetter (Non-anonymous question) * [📄]

⤴ Upload file

File number limit: 1 Single file size limit: 1GB Allowed file types: PDF

9. Please attach your supporting documentation here. Documentation should be provided as needed to support appealed issues. Documentation must be saved as a single pdf file or an excel file to be submitted.

Please use the naming convention: "DistrictNumber_Documentation"

Ex: 999_Documentation (Non-anonymous question) * [📄]


⤴ Upload file


File number limit: 10 Single file size limit: 1GB Allowed file types: Excel, PDF

Send me an email receipt of my responses

Submit

ALL APPEALS FORMS MUST BE SUBMITTED BY 4 P.M. CST ON December 18, 2023

 Print response

 Submit another



Submitted!

Thank you for submitting your appeal. The department will review all appeals, and appeal response letters will be sent from TNEDE.Graduates@tn.gov to the Director of Schools.

**As a back up, we recommend printing your response when you get to the confirmation page
OR
email TNEDE.Accountability@tn.gov to confirm receipt of submission.**

 Microsoft 365

Microsoft Forms | AI-Powered surveys, quizzes and polls [Create my own form](#)

[Privacy and cookies](#) | [Terms of use](#)

Resources

- [2022-23 School Letter Grade Protocol and Appeal Guide](#)
- 2022-23 School Letter Grade Overview and Appeal Webinar Slide Deck and Recording (on Accountability application)
- File layouts (on Accountability application)

Letter Grade Dashboard Timeline

- Timeline
 - December 13: School Letter Grades dashboard preview open
 - December 21: School Letter Grades dashboard public launch
- Communications Support Office Hours (11:30 a.m.-12:30 p.m. CST)
 - December 18: [Click here to join the meeting](#)
 - December 19: [Click here to join the meeting](#)
 - December 20: [Click here to join the meeting](#)

Questions?

Exit Survey





Thank You!

For any questions, please email TNE.Accountability@tn.gov.

Permission is granted to use and copy these materials for non-commercial educational purposes with attribution credit to the "Tennessee Department of Education". If you wish to use these materials for reasons other than non-commercial educational purposes, please contact the Office of General Counsel at (615) 741-2921 or Joanna Collins (joanna.collins@tn.gov).