

## Job Description

### Forest Health Specialist

Location: Nashville, TN

#### **Job Description:**

The Forest Health Specialist resides within the Forest Health and Sustainability Unit and serves as the division technical expert for forest insects, diseases, and invasive plants statewide. They are responsible with securing grant funding and coordinating all forest health programs.

#### **Specific Job Duties:**

##### **PLANNING**

1. Conducts annual planning exercises to prepare for forest health program operations such as spongy moth trapping and treatment, aerial surveillance, hemlock woolly adelgid treatments, southern pine beetle trapping and monitoring, other insect or disease surveys as appropriate, and general forest health outreach, education and training.
2. Seeks and secures grant revenue to fund each forest health program.
3. Seeks opportunities and partnerships to improve and grow forest health programs with sister state agencies, federal partners, non-government organizations and the public.
4. Works as a part of a dynamic team of other program specialists, regional foresters and seasonal employees to develop and execute holistic forest management programs.

##### **PROGRAM DEVELOPMENT AND IMPLEMENTATION**

1. Conducts forest health surveys and monitoring activities statewide.
2. Provides training and outreach to TDF personnel, landowners, and partners on forest health management practices.
3. Manages grant award contracts for the forest health program, community invasive plant projects and contracts for seasonal forest health projects.

4. Develops and maintains cooperative partnerships with federal and state agencies, industry and other non-government organizations to promote forest health objectives in the state.
5. Serves as the forest health liaison with the U.S Forest Service and Southern Group of State Foresters to promote regional objectives, partnerships, and grant funding.
6. Serves as the Division's subject matter expert on forest insects, diseases, and invasive plants.

## **SUPERVISION**

1. Supervises Crew Leader who oversees the activities and operations of the seasonal hemlock woolly adelgid strike team and assists with other forest health programs as needed.

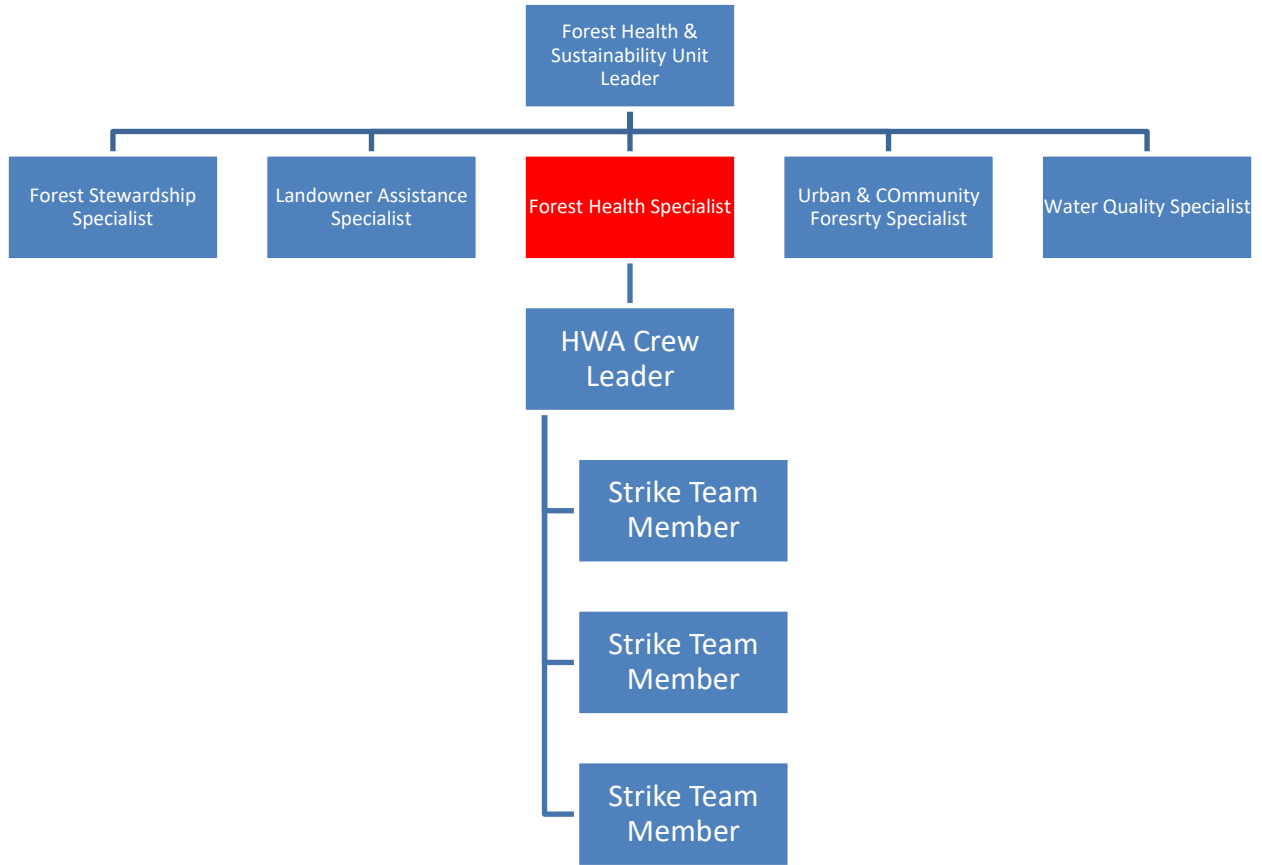
**Application link can be found on the Tennessee Division of Forestry's Careers page:**

<https://www.tn.gov/agriculture/forests/employment-opportunities.html>

For more information, please contact:

**Robert Elliott** | Forest Health and Sustainability Unit Leader  
Department of Agriculture  
Ellington Agricultural Center  
P.O. Box 40627 Melrose Station, Nashville, TN 37204  
C. 615-815-6961  
[Robert.Elliott@tn.gov](mailto:Robert.Elliott@tn.gov)  
[www.tn.gov/agriculture](http://www.tn.gov/agriculture)

**Organization:**



## Nashville, TN

Nashville is one of the fastest growing cities in the nation and is considered an “It” city, where people from all walks of life come to settle in. It earned its nickname “Music City” in the 1950s as the global center for the entertainment industry. It is not unusual for a headlining music star to surprise a crowd with an impromptu performance down on the famous Broadway in downtown. In addition to honky tonks and music venues, Nashville also boasts two major league sports teams, the Tennessee Titans and the Nashville Predators. If sports aren’t your thing, Nashville’s entertainment options also include a symphony orchestra, ballet and theatre companies, museums and art galleries and numerous festivals and events nearly throughout the year!

Nashville resides in the middle Tennessee region, which provides genuine Southern hospitality and an unparalleled access to Tennessee’s natural resources. Its rolling hills and fertile valleys make it the perfect location for farms and wineries where the extensive cave system and the limestone water are ideal for making whiskey and bourbon. Outdoor recreation is abundant with several lakes, streams, hiking trails and golf courses within a 10 mile radius of any location.

## Division Background

The Tennessee Division of Forestry (TDF) celebrated its centennial anniversary in 2014. One of the Division’s first missions was to plant trees on eroded and abandoned farm land in the western part of the state. Over the decades, TDF has grown to protect, conserve, and enhance Tennessee’s 14 million acres of forest land through forest health protection, rural and urban forest management, wildfire and prescribed fire management, water quality protection, forest business services, state forest management and conservation education. Today, TDF employs over 400 personnel statewide and is well known as the wildfire and forest health experts. The Division resides within the Tennessee Department of Agriculture whose mission is to promote wise uses of Tennessee’s agricultural and forest resources, to develop economic opportunities, and to ensure safe and dependable food, fuel, and fiber for all citizens.