

Job Description

State Forest Forester-Forester 2

Location: Sewanee, Franklin County, TN

Job Description:

The Bledsoe and Franklin State Forest Forester resides within the Cumberland District and is responsible for implementing forest management activities on two state forests covering more than 17,000 acres.

Specific Job Duties:

PLANNING

1. Provides input and guidance to the Cumberland Assistant District Forester for State Forests regarding forest management activities on Franklin and Bledsoe State Forest.
2. Functions under the general supervision of the State Forest Supervisor and provides data and input to the supervisor regarding forest management activities, maintenance and overall forest operations.

PROGRAM DEVELOPMENT AND IMPLEMENTATION

1. Actively develops and maintains working partnerships with other state and federal agencies, non-profit organizations and various conservation groups.
2. Ensures the implementation of the 20/20 harvest plan (<https://www.tn.gov/agriculture/forests/state-forests.html>) for a healthy state forest.
3. Provides technical assistance and relevant forest management information to landowners, schools, communities, non-profits, municipalities and cities through field day activities performed on the state forest, when appropriate.
4. Administers a compartment plan process to help provide multiple use benefits for the people of Tennessee. The primary uses include: timber production, wildlife habitat, recreation, water quality, natural resource research, forest resource management demonstrations, and aesthetics.

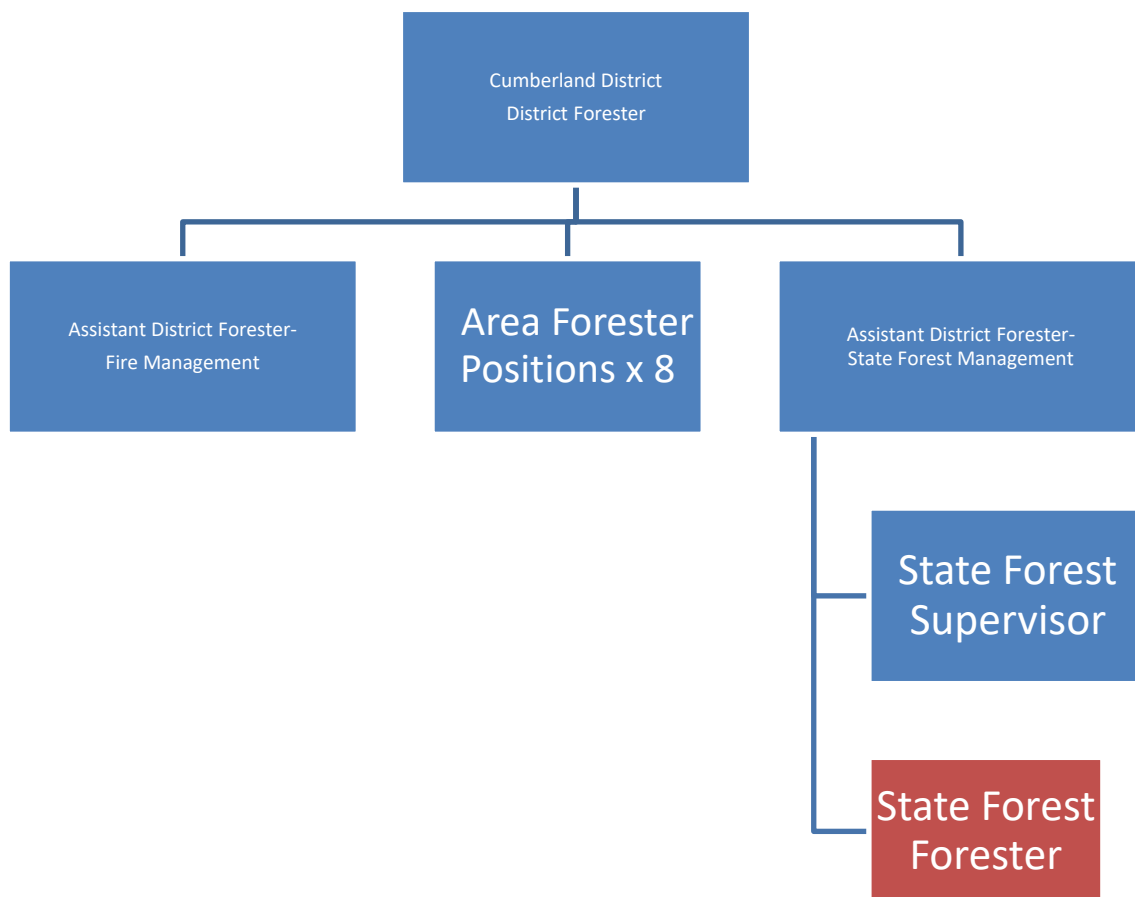
Application link can be found on the Tennessee Division of Forestry's Careers page:
<https://www.tn.gov/agriculture/forests/employment-opportunities.html>

For more information, please contact:

Daniel Nielsen | Assistant District Forester
Tennessee Division of Forestry
929 West Jackson Street, Suite C
Cookeville, TN 38501
p. 615-202-9393 f. 931-526-2279
Daniel.Nielsen@tn.gov
www.tn.gov/agriculture

You must send a copy of transcript to the contact person above

Organization:



Division Background

The Tennessee Division of Forestry (TDF) celebrated its centennial anniversary in 2014. One of the Division's first missions was to plant trees on eroded and abandoned farm land in the western part of the state. Over the decades, TDF has grown to protect, conserve, and enhance Tennessee's 14 million acres of forest land through forest health protection, rural and urban forest management, wildfire and prescribed fire management, water quality protection, forest business services, state forest management and conservation education. Today, TDF employs over 400 personnel statewide and is well known as the wildfire and forest health experts. The Division resides within the Tennessee Department of Agriculture whose mission is to promote wise uses of Tennessee's agricultural and forest resources, to develop economic opportunities, and to ensure safe and dependable food, fuel, and fiber for all citizens.