

## Job Description

### State Forest Forester Supervisor-Forester 3

Location: Medon, TN

#### **Job Description:**

This State Forest Forester position is located within the West Tennessee District and is responsible for implementing forest management activities on 12,754 acres of the Chickasaw State Forest.

#### **Specific Job Duties:**

##### **PLANNING**

1. Provides input and guidance to the WTN Assistant District Forester for State Forests regarding forest management activities on Chickasaw State Forest.
2. Provides general supervision to the State Forest Forester on Chickasaw State Forest.
3. Administers a compartment plan process to help provide multiple use benefits for the people of Tennessee. The primary uses include timber production, wildlife habitat, recreation, water quality, natural resource research, forest resource management demonstrations, and aesthetics.

##### **PROGRAM DEVELOPMENT AND IMPLEMENTATION**

1. Executes forest management prescriptions such as timber harvesting, prescribed burning, and invasive plant control as directed by compartment plans.
2. Utilizes ArcGIS and other technology to collect forest inventory and document state forest management activities.
3. Provides technical assistance and conducts forest management demonstrations to landowners, schools, communities, non-profits, municipalities, and cities through field day activities performed on the state forest.

##### **FISCAL ADMINISTRATION**

1. Works with the West Tennessee District Forester and the State Forest Unit Leader to develop and manage the Chickasaw State Forest operating budget.
2. Follows all state purchasing processes and policies and ensures those same

policies and processes are adhered to by both direct reports and indirect reports.

## **SUPERVISION**

1. Directly supervises 1 Forestry Technician and indirectly supervises 3 Forestry Aide
- 2.
2. Develops annual Individual Performance Plans and conducts interim and annual reviews for direct reports.
3. Oversees all personnel actions on the state forest.

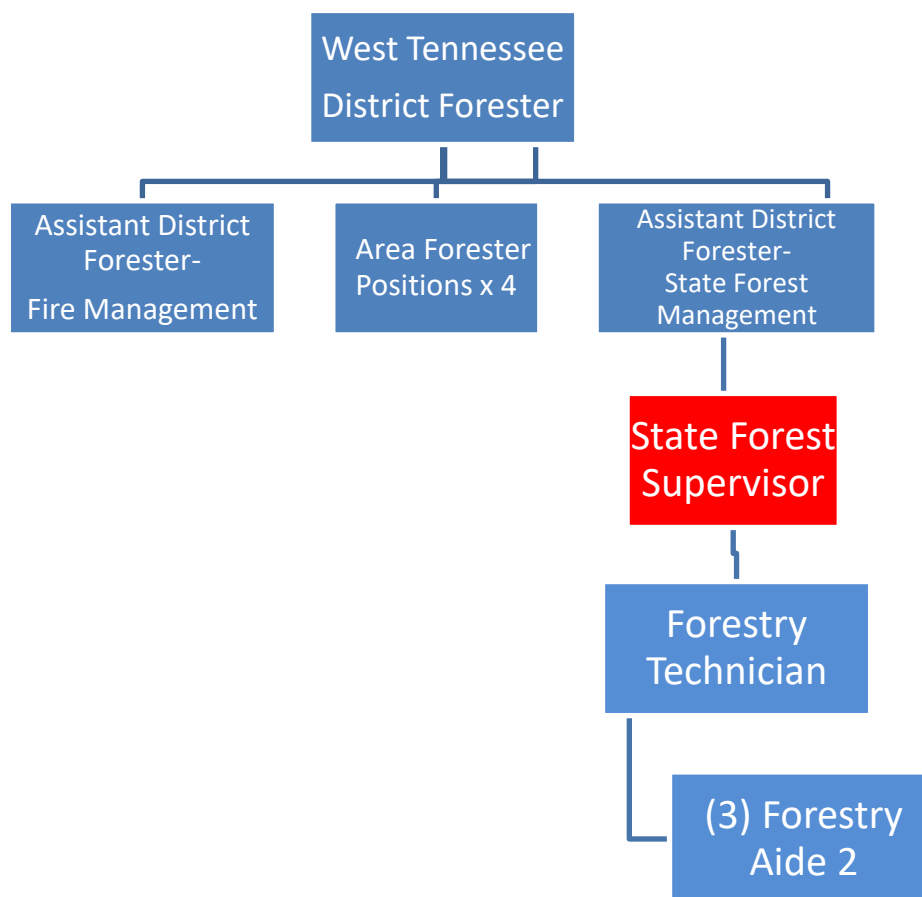
**Application link can be found on the Tennessee Division of Forestry's Careers page:**  
<https://www.tn.gov/agriculture/forests/employment-opportunities.html>

For more information, please contact:

**Scott Huff | District Forester**  
**Tennessee Division of Forestry**  
**West Tennessee District Office**  
**p. 731.694.1180**  
[scott.huff@tn.gov](mailto:scott.huff@tn.gov)  
[www.tn.gov/agriculture](http://www.tn.gov/agriculture)

**You must attach a copy of your transcripts.**

**Organization:**



**Division Background**

The Tennessee Division of Forestry (TDF) celebrated its centennial anniversary in 2014. One of the Division's first missions was to plant trees on eroded and abandoned farm land in the western part of the state. Over the decades, TDF has grown to protect, conserve, and enhance Tennessee's 14 million acres of forest land through forest health protection, rural and urban forest management, wildfire and prescribed fire management, water quality protection, forest business services, state forest management and conservation education. Today, TDF employs over 400 personnel statewide and is well known as the wildfire and forest health experts. The Division resides within the Tennessee Department of Agriculture whose mission is to promote wise uses of Tennessee's agricultural and forest resources, to develop economic opportunities, and to ensure safe and dependable food, fuel, and fiber for all citizens.

## Chickasaw State Forest

Chickasaw State Forest is located in Chester and Hardeman Counties on the Coastal Plain in West Tennessee. The Resettlement Administration Program purchased the majority of lands making up the forest in 1938; the lands at the time of acquisition were highly eroded and degraded by farming and timber harvesting. The entire project area was deeded to the State of Tennessee in 1955 and the Tennessee Department of Agriculture, Forestry Division assumed responsibility for the portion that is now a State Forest. Approximately 63% of the Forest is in hardwood types, about 29% is in southern yellow pines, and the remainder is in mixed pine and hardwood cover. The Forest is dominated by stands of mature sawtimber. About 35% of the stands are upland hardwoods in excess of 80 years old.

Two state parks surrounding lakes occur within the forest. There are various educational and demonstration areas highlighted with signs throughout the forest. In addition, there are 115 acres of forest set aside as an experimental forest and nursery. There are 8 cemeteries and 4 in-holdings. Large salvage cuts have occurred as a result of 446 acres of forest being blown down by a tornado in 1988 and 300 acres damaged by southern pine beetles in 1986-87. Hunting has been a traditional use of the forest. Other recreational activities include horseback riding, hiking, and camping.