

Ellington Agricultural Center

The Center, named for former governor Buford Ellington, is home to the Tennessee Department of Agriculture, the Tennessee Wildlife Resources Agency, the Tennessee Agricultural Museum, the National Agricultural Statistics Service, and the University of Tennessee Extension Central Region Office.

Things to See Along the Trails

- Forest Discovery Trail
- Spectacular Oak and Maple Trees
- Rain Gardens, Low Impact Practices
- Seven Mile Creek Riparian Zone
- Orchardgrass Hayfields
- Middle TN Iris Society Garden
- Tennessee Agricultural Museum
- Wildflowers and Wildlife



Rogers' Walk

The main trail is 1.6 miles in length, and it is named for Rogers Clark Caldwell, a prominent banker and financier of the early 20th century in Tennessee, and builder of Brentwood Hall, an estate on which he constructed a home using Andrew Jackson's Hermitage as the model. This beautiful estate is known today as Ellington Agricultural Center.



Ellington Agricultural Center Trail System Map

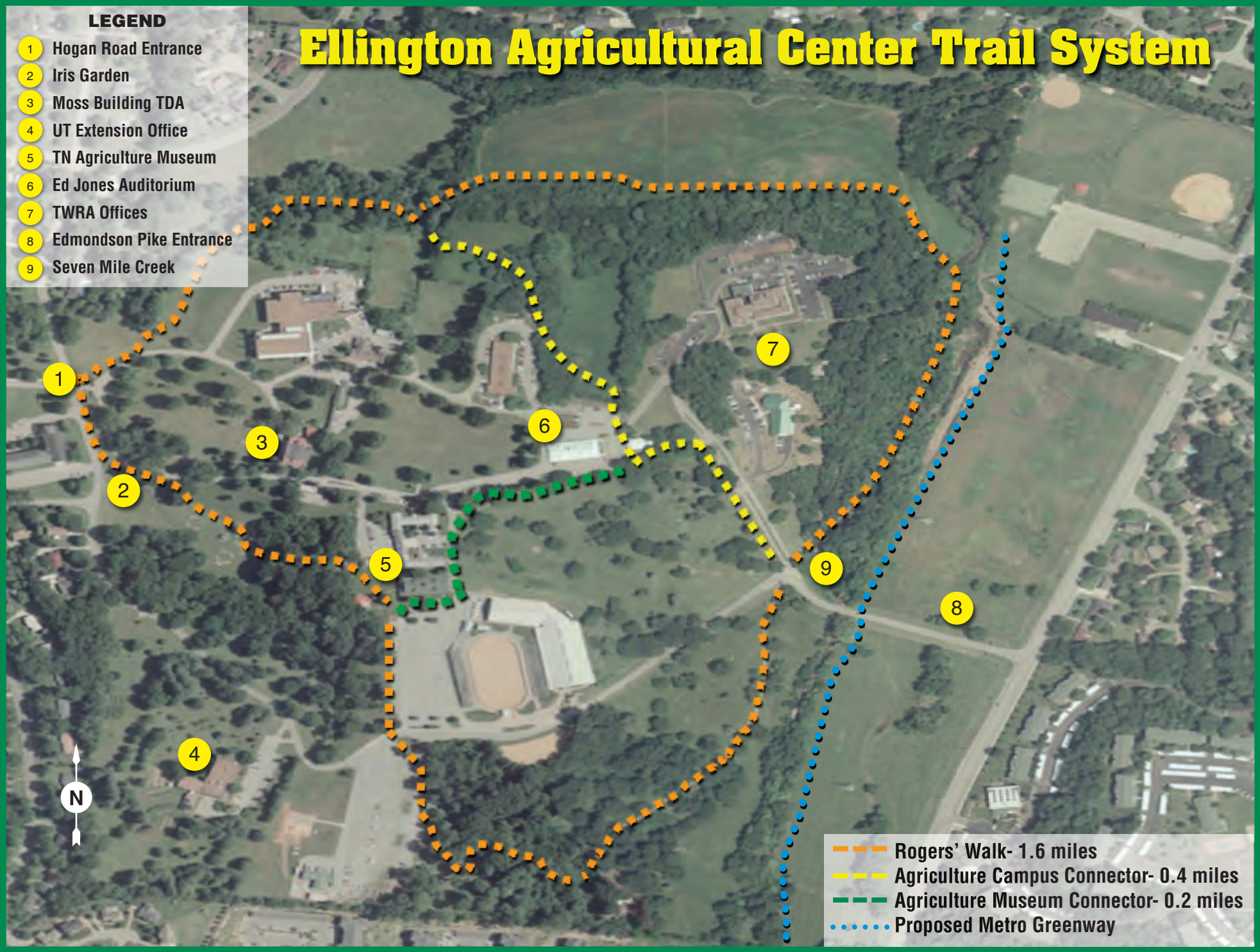
Tennessee Department of Agriculture
Ellington Agricultural Center
440 Hogan Road
Nashville, TN 37220

www.TN.gov/agriculture

Ellington Agricultural Center Trail System

LEGEND

- 1 Hogan Road Entrance
- 2 Iris Garden
- 3 Moss Building TDA
- 4 UT Extension Office
- 5 TN Agriculture Museum
- 6 Ed Jones Auditorium
- 7 TWRA Offices
- 8 Edmondson Pike Entrance
- 9 Seven Mile Creek



- Rogers' Walk- 1.6 miles
- Agriculture Campus Connector- 0.4 miles
- Agriculture Museum Connector- 0.2 miles
- Proposed Metro Greenway