

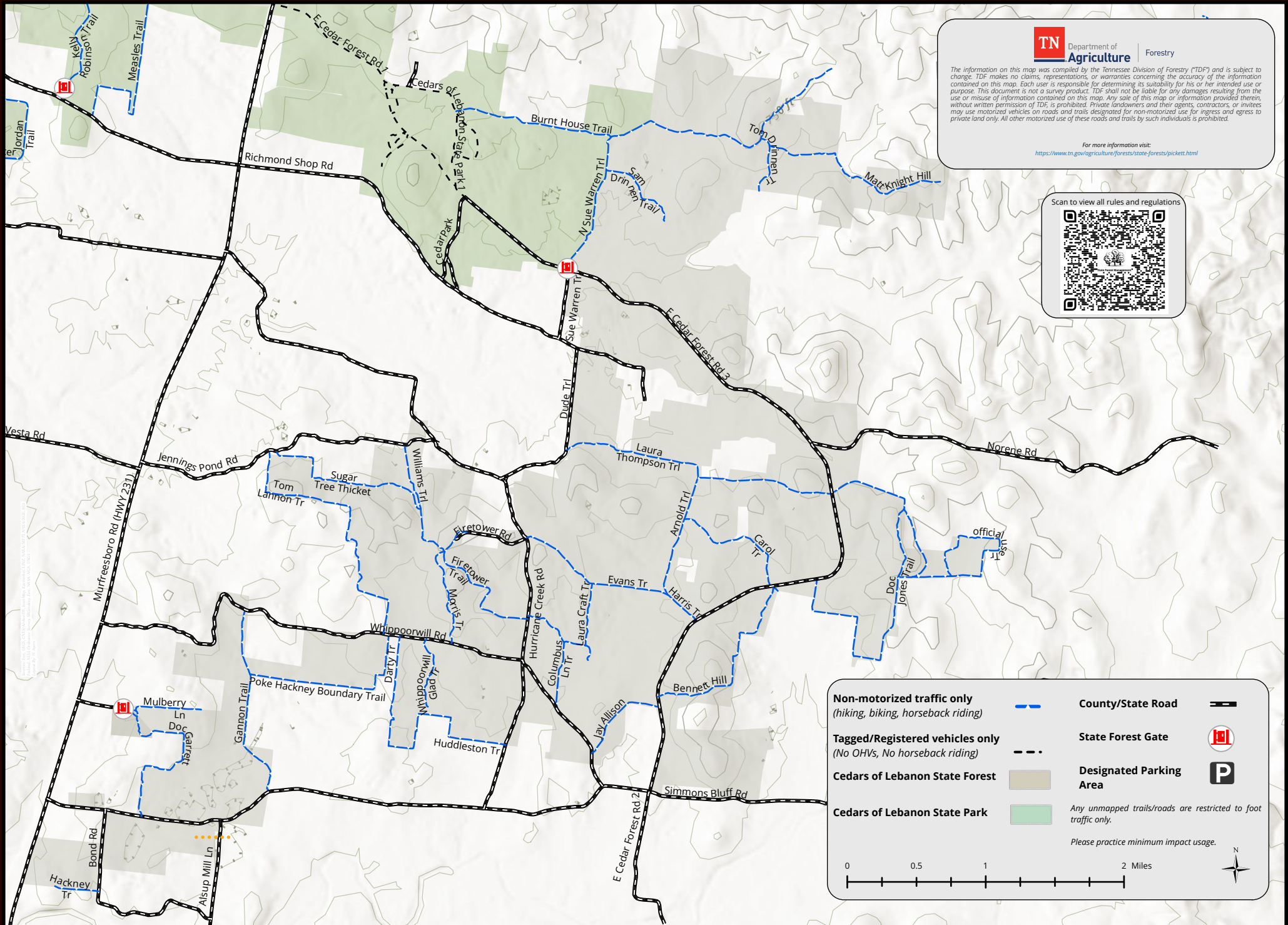
Cedars of Lebanon State Forest



The information on this map was compiled by the Tennessee Division of Forestry ("TDF") and is subject to change. TDF makes no claims, representations, or warranties concerning the accuracy of the information contained on this map. Each user is responsible for determining its suitability for his or her intended use or purpose. This document is not a survey product. TDF shall not be liable for any damages resulting from the use or misuse of information contained on this map. Any sale of this map or information provided therein, without written permission of TDF, is prohibited. Private landowners and their agents, contractors, or invitees may use motorized vehicles on roads and trails designated for non-motorized use for ingress and egress to private land only. All other motorized use of these roads and trails by such individuals is prohibited.

For more information visit:
<https://www.tn.gov/agriculture/forests/state-forests/pickett.html>

Scan to view all rules and regulations



Non-motorized traffic only (hiking, biking, horseback riding)		County/State Road	
Tagged/Registered vehicles only (No OHVs, No horseback riding)		State Forest Gate	
Cedars of Lebanon State Forest		Designated Parking Area	
Cedars of Lebanon State Park		Any unmapped trails/roads are restricted to foot traffic only.	

Please practice minimum impact usage.

0 0.5 1 2 Miles