

FY 2008

***ANNUAL REPORT ON THE
QUALITY OF***

**KEROSENE AND MOTOR
FUEL IN TENNESSEE**



**IN FULFILLMENT OF THE REQUIREMENTS OF
TCA 47-18-1304**

SUBMITTED BY THE

TENNESSEE DEPARTMENT OF AGRICULTURE



ANNUAL REPORT ON THE QUALITY OF KEROSENE AND MOTOR FUEL IN TENNESSEE

TABLE OF CONTENTS

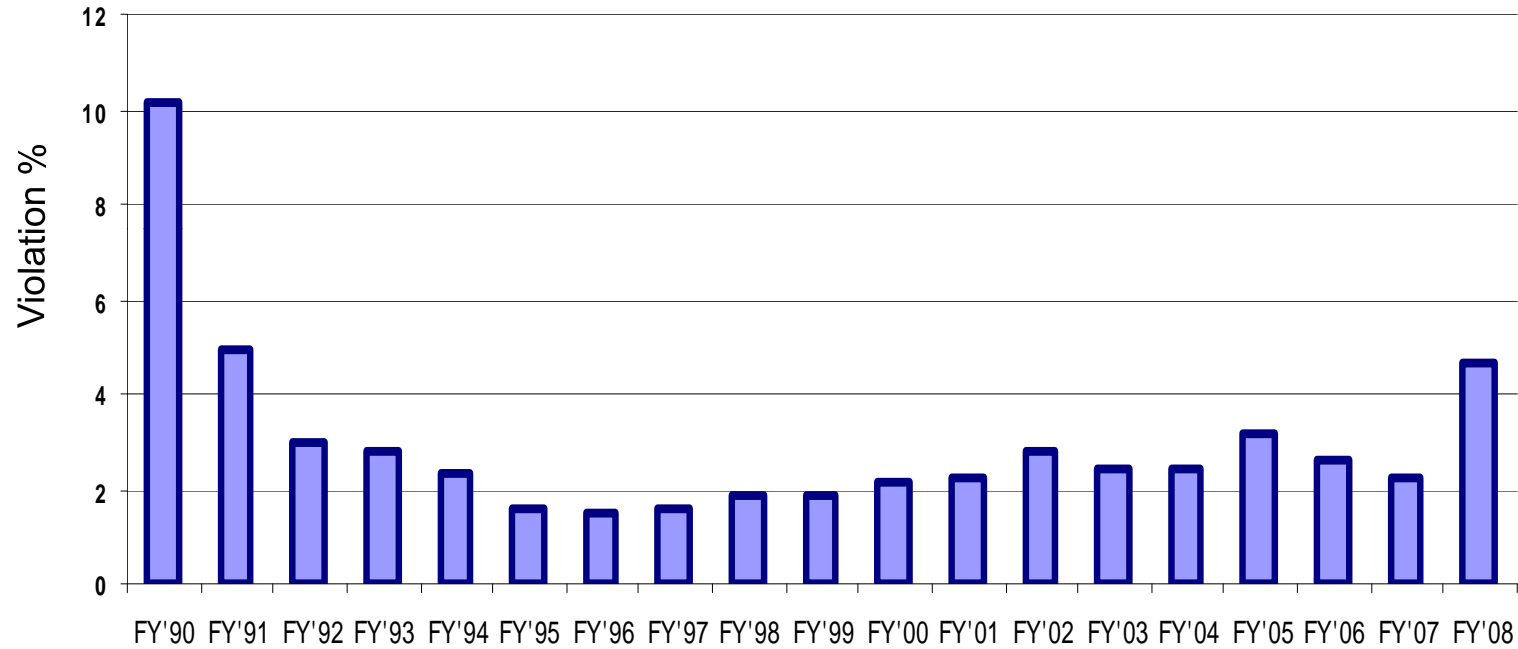
- I. Effectiveness of Program**
 - a. Violation % Graphs**
 - b. State Wide Violation Graph**
 - c. Gasoline, Diesel, Kerosene Trend Graph**

- II. Consumer Complaints Summary**

- III. Inspection Data**
 - a. State Wide Summary**
 - b. TN Region Summary**
 - c. Product Summary**
 - d. Business Type Summary**
 - e. Inspection Type Summary**
 - f. County Distribution Data**

- IV. Enforcement Summary**

TENNESSEE DEPARTMENT OF AGRICULTURE
ANNUAL SAMPLE VIOLATION SUMMARY
All Regulated Products Tested

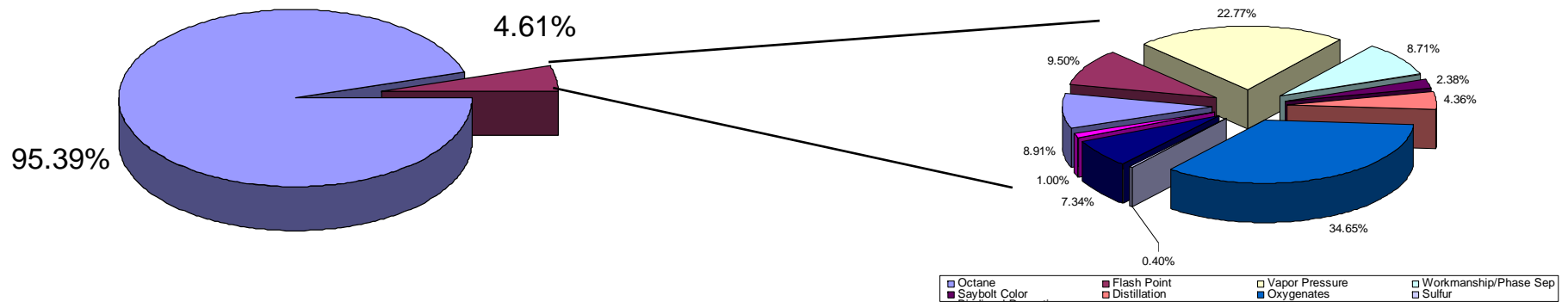


EFFECTIVENESS OF PROGRAM
REGULATORY SERVICES

State Wide Violation Summary

Violation Breakdown

July 1, 2007 - June 30, 2008

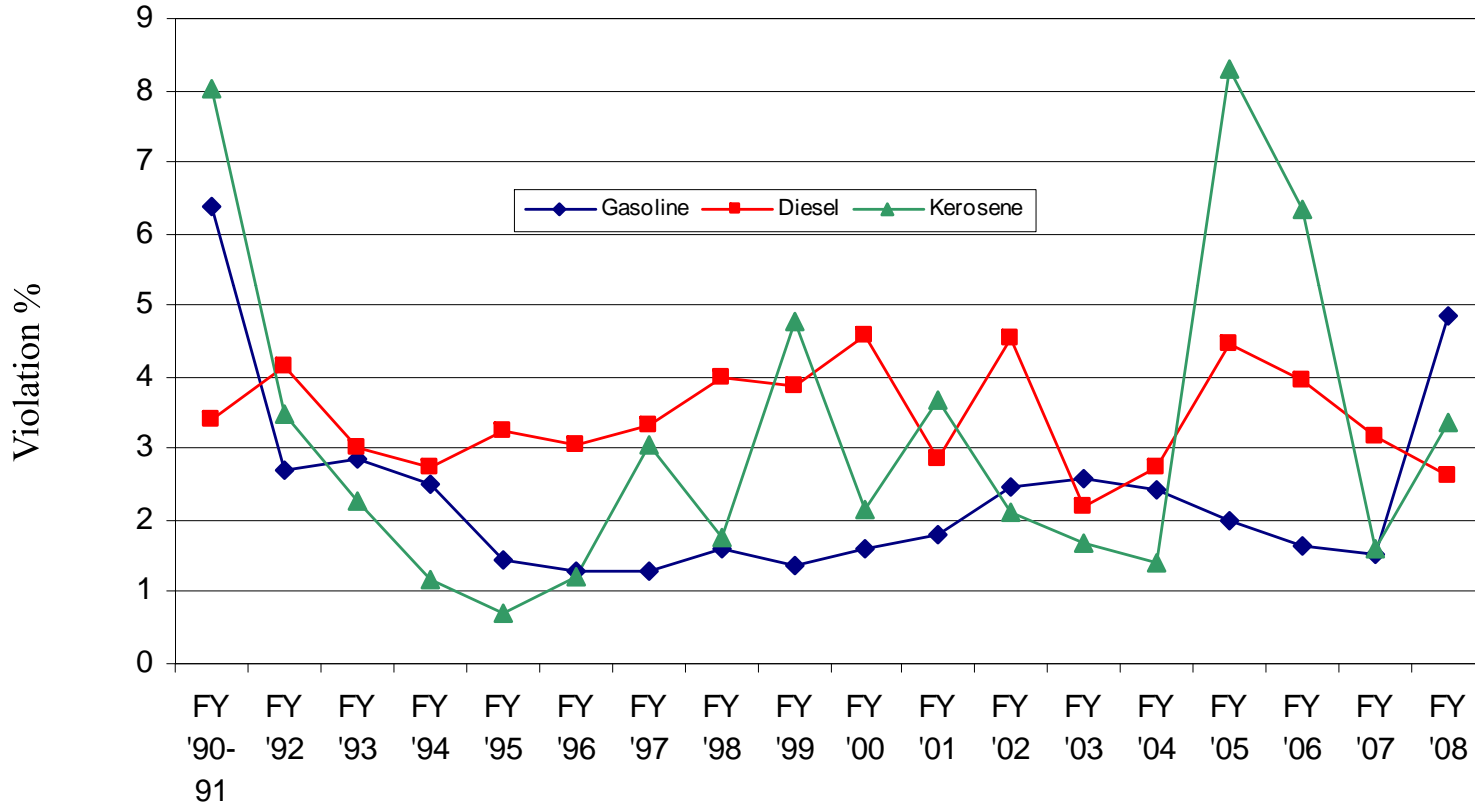


Tennessee Department of Agriculture
Regulatory Services

TENNESSEE DEPARTMENT OF AGRICULTURE

ANNUAL SAMPLE VIOLATION SUMMARY

Gasoline, Diesel, & Kerosene Breakdown



EFFECTIVENESS OF PROGRAM
REGULATORY SERVICES



**MOTOR FUELS QUALITY PROGRAM
SUMMARY OF CONSUMER COMPLAINTS RECEIVED FROM
07/01/2007 – 06/30/2008**

TOTAL NUMBER OF COMPLAINTS EVALUATED IN TIME FRAME: 131

Category Breakdown of Complaints :

Octane	7
Water	56
Sediment	2
Alcohols	2
Contamination	60
Misc.	4

The Department maintains a 24 hour toll free line (1-800-OCTANE1) for Consumer Complaints. It is promoted through media publicity and dispenser decals applied by inspectors performing Weights and Measures activities.

REPORTING CODE KEY

Product Codes

AG - Aviation Gasoline
D - Diesel
G - Gasoline
JF - Jet Fuel
K - Kerosene
RF - Racing Fuel
PD - Premium Diesel
BD - Biodiesel Blending Stock
BDB - Biodiesel Blend
LPG - Liquefied Petroleum Gas
E85 - E-85 Fuel Ethanol
DFE - Denatured Fuel Ethanol

Grade Codes

MG - Mid Grade
MGE - Mid Grade w/ Ethanol
PU - Premium Unleaded
PUE - Premium Unleaded w/ Ethanol
RL - Regular Leaded
RU - Regular Unleaded
RUE - Regular Unleaded w/ Ethanol
1D - No. 1-D Diesel
2D - No. 2-D Diesel
2DLS - No. 2-D Low Sulfur
2D UL - No. 2-D ULSD
1K - No. 1 Kerosene
2K - No. 2 Kerosene
JA - Jet A Turbine Fuel
80 - 80 Octane
100 - 100 Octane
100LL - 100 Low Lead
BDBS - S500 Biodiesel Blending Stock
BDBS1 - S15 Biodiesel Blending Stock
B10LS - B10 Biodiesel Low Sulfur
B20U - B20 Biodiesel ULSD
B20LS - B20 Biodiesel Low Sulfur
B5 LS - B5 Biodiesel Low Sulfur
B5 UL - B5 Biodiesel ULSD
B5-20 - B5-20 Low Sulfur
E-85 - E-85 Fuel Ethanol Grade
SD - Special Duty Propane
E100 - Denatured Fuel Ethanol Grade

District Codes

W - West TN
M - Middle TN
E - East TN

Business Type

R - Retailer
T - Terminal
A - Airport
D - Distributor
M - Marina
O - Other
I - Individual

Inspection Type

R - Routine
C - Complaint
F - Follow-up
O - Office Request

Tennessee Department of Agriculture State Wide Violation Analysis Report

PULL DATE ranges from 7/1/2007 TO 6/30/2008

Today: 08/13/2008

<i>Prod Code</i>	<i>Total Samples</i>	<i>Samples in Violation</i>	<i>%</i>	<i>Test Violation Total</i>	<i>Total Volume (Gals)</i>	<i>Total in Violation</i>
AG	43	0	0.00	0	1,301,681.00	0
BD	40	14	35.00	22	290,739.00	59,080
BDB	67	19	28.36	20	399,907.00	103,672
D	1,837	48	2.61	48	81,644,615.19	168,791
DFE	8	0	0.00	0	1,685,747.50	0
E85	26	4	15.38	7	52,154.00	4,420
G	5,840	284	4.86	399	155,003,894.21	2,932,072
JF	38	0	0.00	0	1,840,925.00	0
K	357	12	3.36	12	329,696.00	4,886
Total	8,256	381	4.61	508	242,549,358.90	3,272,921

Test Violation Detail Listing

45	Octane	8.91%
48	Flash Point	9.50%
175	Oxygenates	34.65%
115	Vapor Pressure	22.77%
30	Workmanship (Appearance)	5.94%
14	Phase Separation	2.77%
12	Saybolt Color	2.38%
2	Sulfur	0.40%
22	Distillation	4.36%
1	Acid Number	0.20%
2	Glycerine	0.40%
1	Cloud Point	0.20%
5	Phosphorous	0.99%
17	Biodiesel Blend	3.37%
11	Oxidation	2.18%
1	E-85 Hydrocarbons & Aliphatic Ethers	0.20%
2	E85 Chlorides	0.40%
2	E85 Water	0.40%

Tennessee Department of Agriculture District Violation Analysis Report

ALL DISTRICT VALUES SELECTED.

PULL DATE ranges from 7/1/2007 TO 6/30/2008

Today: 08/13/2008

<i>Dist</i>	<i>Prod Code</i>	<i>Grade</i>	<i>Total Samples</i>	<i>Samples in Violation</i>	<i>%</i>	<i>Test Violation Total</i>	<i>Total Volume (Gals)</i>	<i>Total in Violation</i>
EAST								
AG	100LL		9	0	0.00	0	24,694	0
	Subtotal:		9	0	0.00	0	24,694	0
BD	BDBS		11	3	27.27	4	71,560	31,384
	Subtotal:		11	3	27.27	4	71,560	31,384
BDB	B10 ULSD		1	1	100.00	1	1,259	1,259
BDB	B10LS		2	1	50.00	1	1,241	800
BDB	B20LS		9	3	33.33	3	31,258	20,781
BDB	B5 LS		1	0	0.00	0	1,970	0
BDB	B5-20		4	1	25.00	1	8,249	3,345
BDB	B5-20 ULSD		2	1	50.00	1	12,168	2,268
	Subtotal:		19	7	36.84	7	56,145	28,453
D	2D		52	0	0.00	0	269,404	0
D	2D LS		255	7	2.75	7	20,665,773	4,168
D	2D ULSD 1:		570	10	1.75	10	25,897,642	30,738
	Subtotal:		877	17	1.94	17	46,832,819	34,906
DFE	E100		1	0	0.00	0	329,406	0
	Subtotal:		1	0	0.00	0	329,406	0
E85	E-85		6	1	16.67	2	16,690	2,959
	Subtotal:		6	1	16.67	2	16,690	2,959
G	MG		573	10	1.75	15	1,605,960	26,377
G	PU		1,055	52	4.93	63	24,752,442	115,821
G	RU		892	25	2.80	36	52,440,571	2,111,296
	Subtotal:		2,520	87	3.45	114	78,798,972	2,253,494
JF	JA		9	0	0.00	0	963,670	0

Tennessee Department of Agriculture District Violation Analysis Report

ALL DISTRICT VALUES SELECTED.

PULL DATE ranges from 7/1/2007 TO 6/30/2008

Today: 08/13/2008

<i>Dist</i>	<i>Prod Code</i>	<i>Grade</i>	<i>Total Samples</i>	<i>Samples in Violation</i>	<i>%</i>	<i>Test Violation Total</i>	<i>Total Volume (Gals)</i>	<i>Total in Violation</i>
Subtotal:			9	0	0.00	0	963,670	0
K	1K		122	2	1.64	2	126,873	1,344
Subtotal:			122	2	1.64	2	126,873	1,344
Total:			3,574	117	3.27	146	127,220,830	2,352,540

Total Violation Detail Listing

14	Octane	9.59%
17	Flash Point	11.64%
43	Oxygenates	29.45%
36	Vapor Pressure	24.66%
7	Workmanship (Appearance)	4.79%
4	Phase Separation	2.74%
2	Saybolt Color	1.37%
1	Sulfur	0.68%
11	Distillation	7.53%
1	Acid Number	0.68%
1	Glycerine	0.68%
6	Biodiesel Blend	4.11%
2	Oxidation	1.37%
1	E-85 Hydrocarbons & Aliphatic Ethers	0.68%

Tennessee Department of Agriculture District Violation Analysis Report

ALL DISTRICT VALUES SELECTED.

PULL DATE ranges from 7/1/2007 TO 6/30/2008

Today: 08/13/2008

<i>Dist</i>	<i>Prod Code</i>	<i>Grade</i>	<i>Total Samples</i>	<i>Samples in Violation</i>	<i>%</i>	<i>Test Violation Total</i>	<i>Total Volume (Gals)</i>	<i>Total in Violation</i>
MIDDLE	AG	100LL	22	0	0.00	0	168,375	0
	Subtotal:		22	0	0.00	0	168,375	0
	BD	BDBS	11	3	27.27	4	31,932	15,440
	Subtotal:		11	3	27.27	4	31,932	15,440
	BDB	B10LS	1	0	0.00	0	53,961	0
	BDB	B20 ULSD	3	0	0.00	0	9,559	0
	BDB	B20LS	11	2	18.18	3	27,713	3,642
	BDB	B5 LS	1	0	0.00	0	15,682	0
	BDB	B5-20	12	3	25.00	3	39,507	4,876
	BDB	B5-20 ULSD	2	1	50.00	1	5,465	1,360
	Subtotal:		30	6	20.00	7	151,887	9,878
	D	2D	44	3	6.82	3	2,204,370	89,402
	D	2D LS	149	7	4.70	7	2,519,496	8,100
	D	2D ULSD 1:	469	17	3.62	17	14,094,273	28,980
	Subtotal:		662	27	4.08	27	18,818,139	126,482
	DFE	E100	6	0	0.00	0	279,346	0
	Subtotal:		6	0	0.00	0	279,346	0
	E85	E-85	20	3	15.00	5	35,464	1,461
	Subtotal:		20	3	15.00	5	35,464	1,461
	G	MG	563	18	3.20	28	1,639,058	69,834
	G	PU	730	49	6.71	76	14,444,691	128,818
	G	RU	689	26	3.77	38	37,067,923	139,448
	Subtotal:		1,982	93	4.69	142	53,151,673	338,100
	JF	JA	20	0	0.00	0	165,677	0

Tennessee Department of Agriculture District Violation Analysis Report

ALL DISTRICT VALUES SELECTED.

PULL DATE ranges from 7/1/2007 TO 6/30/2008

Today: 08/13/2008

<i>Dist</i>	<i>Prod Code</i>	<i>Grade</i>	<i>Total Samples</i>	<i>Samples in Violation</i>	<i>%</i>	<i>Test Violation Total</i>	<i>Total Volume (Gals)</i>	<i>Total in Violation</i>
Subtotal:			20	0	0.00	0	165,677	0
K	1K		199	10	5.03	10	171,672	3,542
Subtotal:			199	10	5.03	10	171,672	3,542
Total:			2,952	142	4.81	195	72,974,164	494,903

Total Violation Detail Listing

13	Octane	6.74%
27	Flash Point	13.99%
75	Oxygenates	38.86%
24	Vapor Pressure	12.44%
15	Workmanship (Appearance)	7.77%
7	Phase Separation	3.63%
10	Saybolt Color	5.18%
9	Distillation	4.66%
1	Glycerine	0.52%
6	Biodiesel Blend	3.11%
2	Oxidation	1.04%
2	E85 Chlorides	1.04%
2	E85 Water	1.04%

Tennessee Department of Agriculture District Violation Analysis Report

ALL DISTRICT VALUES SELECTED.

PULL DATE ranges from 7/1/2007 TO 6/30/2008

Today: 08/13/2008

<i>Dist</i>	<i>Prod Code</i>	<i>Grade</i>	<i>Total Samples</i>	<i>Samples in Violation</i>	<i>%</i>	<i>Test Violation Total</i>	<i>Total Volume (Gals)</i>	<i>Total in Violation</i>
WEST								
AG	100LL		12	0	0.00	0	1,108,612	0
Subtotal:			12	0	0.00	0	1,108,612	0
BD	BDBS		18	8	44.44	14	187,247	12,256
Subtotal:			18	8	44.44	14	187,247	12,256
BDB	B10 ULSD		1	0	0.00	0	72,000	0
BDB	B10LS		6	3	50.00	3	52,950	47,051
BDB	B20LS		1	0	0.00	0	1,750	0
BDB	B5 LS		3	1	33.33	1	14,013	1,745
BDB	B5 ULSD		1	1	100.00	1	7,823	7,823
BDB	B5-20		6	1	16.67	1	43,339	8,722
Subtotal:			18	6	33.33	6	191,875	65,341
D	2D		13	1	7.69	1	135,217	3,506
D	2D LS		55	0	0.00	0	6,024,376	0
D	2D ULSD 1:		230	3	1.30	3	9,834,064	3,897
Subtotal:			298	4	1.34	4	15,993,657	7,403
DFE	E100		1	0	0.00	0	1,076,996	0
Subtotal:			1	0	0.00	0	1,076,996	0
G	MG		413	16	3.87	23	1,068,643	53,320
G	PU		562	64	11.39	87	8,304,298	143,803
G	RU		363	24	6.61	33	13,680,308	143,355
Subtotal:			1,338	104	7.77	143	23,053,249	340,478
JF	JA		9	0	0.00	0	711,578	0
Subtotal:			9	0	0.00	0	711,578	0
K	1K		36	0	0.00	0	31,151	0

Tennessee Department of Agriculture District Violation Analysis Report

ALL DISTRICT VALUES SELECTED.

PULL DATE ranges from 7/1/2007 TO 6/30/2008

Today: 08/13/2008

<i>Dist</i>	<i>Prod Code</i>	<i>Grade</i>	<i>Total Samples</i>	<i>Samples in Violation</i>	<i>%</i>	<i>Test Violation Total</i>	<i>Total Volume (Gals)</i>	<i>Total in Violation</i>
Subtotal:			36	0	0.00	0	31,151	0
Total:			1,730	122	7.05	167	42,354,365	425,478

Total Violation Detail Listing

18	Octane	10.84%
4	Flash Point	2.41%
57	Oxygenates	34.34%
55	Vapor Pressure	33.13%
8	Workmanship (Appearance)	4.82%
3	Phase Separation	1.81%
1	Sulfur	0.60%
2	Distillation	1.20%
1	Cloud Point	0.60%
5	Phosphorous	3.01%
5	Biodiesel Blend	3.01%
7	Oxidation	4.22%

Tennessee Department of Agriculture Product Violation Analysis Report

PULL DATE ranges from 7/1/2007 TO 6/30/2008

Today: 08/13/2008

<i>Prod</i>	<i>Grade</i>	<i>Total Samples</i>	<i>Samples in Violation</i>	<i>%</i>	<i>Test Violation Total</i>	<i>Total Volume (Gals)</i>	<i>Total in Violation</i>
Aviation Gasoline	100LL	43	0	0.00	0	1,301,681.00	0
Subtotal:		43	0	0.00	0	1,301,681.00	0

Tennessee Department of Agriculture Product Violation Analysis Report

PULL DATE ranges from 7/1/2007 TO 6/30/2008

Today: 08/13/2008

<i>Prod</i>	<i>Grade</i>	<i>Total Samples</i>	<i>Samples in Violation</i>	<i>%</i>	<i>Test Violation Total</i>	<i>Total Volume (Gals)</i>	<i>Total in Violation</i>
Biodiesel	BDBS	40	14	35.00	22	290,739.00	59,080
Subtotal:		40	14	35.00	22	290,739.00	59,080

Test Violation Detail Listing

2	Flash Point	9.09%
1	Acid Number	4.55%
2	Glycerine	9.09%
1	Cloud Point	4.55%
5	Phosphorous	22.73%
11	Oxidation	50.00%

Tennessee Department of Agriculture Product Violation Analysis Report

PULL DATE ranges from 7/1/2007 TO 6/30/2008

Today: 08/13/2008

<i>Prod</i>	<i>Grade</i>	<i>Total Samples</i>	<i>Samples in Violation</i>	<i>%</i>	<i>Test Violation Total</i>	<i>Total Volume (Gals)</i>	<i>Total in Violation</i>
Biodiesel Blend							
	B10 U	2	1	50.00	1	73,259.00	1,259
	B10LS	9	4	44.44	4	108,152.00	47,851
	B20 U	3	0	0.00	0	9,559.00	0
	B20LS	21	5	23.81	6	60,721.00	24,423
	B5 LS	5	1	20.00	1	31,665.00	1,745
	B5 UL	1	1	100.00	1	7,823.00	7,823
	B5-20	26	7	26.92	7	108,728.00	20,571
Subtotal:		67	19	28.36	20	399,907.00	103,672

Test Violation Detail Listing

2	Flash Point	11.11%
16	Biodiesel Blend	88.89%

Tennessee Department of Agriculture Product Violation Analysis Report

PULL DATE ranges from 7/1/2007 TO 6/30/2008

Today: 08/13/2008

<i>Prod</i>	<i>Grade</i>	<i>Total Samples</i>	<i>Samples in Violation</i>	<i>%</i>	<i>Test Violation Total</i>	<i>Total Volume (Gals)</i>	<i>Total in Violation</i>
Diesel	2D	109	4	3.67	4	2,608,991.00	92,908
	2D LS	459	14	3.05	14	29,209,645.00	12,268
	2D UL	1,269	30	2.36	30	49,825,979.19	63,615
Subtotal:		1,837	48	2.61	48	81,644,615.19	168,791

Test Violation Detail Listing

44	Flash Point	93.62%
2	Sulfur	4.26%
1	Biodiesel Blend	2.13%

Tennessee Department of Agriculture Product Violation Analysis Report

PULL DATE ranges from 7/1/2007 TO 6/30/2008

Today: 08/13/2008

<i>Prod</i>	<i>Grade</i>	<i>Total Samples</i>	<i>Samples in Violation</i>	<i>%</i>	<i>Test Violation Total</i>	<i>Total Volume (Gals)</i>	<i>Total in Violation</i>
Denat. Fuel EtOH	E100	8	0	0.00	0	1,685,747.50	0
Subtotal:		8	0	0.00	0	1,685,747.50	0

Tennessee Department of Agriculture Product Violation Analysis Report

PULL DATE ranges from 7/1/2007 TO 6/30/2008

Today: 08/13/2008

<i>Prod</i>	<i>Grade</i>	<i>Total Samples</i>	<i>Samples in Violation</i>	<i>%</i>	<i>Test Violation Total</i>	<i>Total Volume (Gals)</i>	<i>Total in Violation</i>
E-85 Fuel Ethanol	E-85	26	4	15.38	7	52,154.00	4,420
Subtotal:		26	4	15.38	7	52,154.00	4,420

Test Violation Detail Listing

2	Vapor Pressure	28.57%
1	E-85 Hydrocarbons & Aliphatic Ethers	14.29%
2	E85 Chlorides	28.57%
2	E85 Water	28.57%

Tennessee Department of Agriculture Product Violation Analysis Report

PULL DATE ranges from 7/1/2007 TO 6/30/2008

Today: 08/13/2008

<i>Prod</i>	<i>Grade</i>	<i>Total Samples</i>	<i>Samples in Violation</i>	<i>%</i>	<i>Test Violation Total</i>	<i>Total Volume (Gals)</i>	<i>Total in Violation</i>
Gasoline							
	MG	1,549	44	2.84	66	4,313,661.27	149,531
	PU	2,347	165	7.03	226	47,501,431.19	388,442
	RU	1,944	75	3.86	107	103,188,801.75	2,394,099
Subtotal:		5,840	284	4.86	399	155,003,894.21	2,932,072

Test Violation Detail Listing

45	Octane	11.28%
175	Oxygenates	43.86%
113	Vapor Pressure	28.32%
30	Workmanship (Appearance)	7.52%
14	Phase Separation	3.51%
22	Distillation	5.51%

Tennessee Department of Agriculture Product Violation Analysis Report

PULL DATE ranges from 7/1/2007 TO 6/30/2008

Today: 08/13/2008

<i>Prod</i>	<i>Grade</i>	<i>Total Samples</i>	<i>Samples in Violation</i>	<i>%</i>	<i>Test Violation Total</i>	<i>Total Volume (Gals)</i>	<i>Total in Violation</i>
Jet Fuel	JA	38	0	0.00	0	1,840,925.00	0
Subtotal:		38	0	0.00	0	1,840,925.00	0

Tennessee Department of Agriculture Product Violation Analysis Report

PULL DATE ranges from 7/1/2007 TO 6/30/2008

Today: 08/13/2008

<i>Prod</i>	<i>Grade</i>	<i>Total Samples</i>	<i>Samples in Violation</i>	<i>%</i>	<i>Test Violation Total</i>	<i>Total Volume (Gals)</i>	<i>Total in Violation</i>
Kerosene	1K	357	12	3.36	12	329,696.00	4,886
Subtotal:		357	12	3.36	12	329,696.00	4,886

Test Violation Detail Listing

12 Saybolt Color 100.00%

Tennessee Department of Agriculture Business Type Violation Analysis Report

Data Sorted with All Parameters

PULL DATE ranges from 7/1/2007 TO 6/30/2008

Today: 08/13/2008

<i>Bus Type</i>	<i>Prod Code</i>	<i>Grade</i>	<i>Total Samples</i>	<i>Samples in Violation</i>	<i>%</i>	<i>Test Violation Total</i>	<i>Total Volume (Gals)</i>	<i>Total in Violation</i>
Airport	AG	100LL	39	0	0.00	0	229,577	0
		Subtotal:	39	0	0.00	0	229,577	0
	G	MG	2	0	0.00	0	8,372	0
	G	PU	1	0	0.00	0	1,450	0
	G	RU	2	0	0.00	0	11,631	0
		Subtotal:	5	0	0.00	0	21,453	0
	JF	JA	30	0	0.00	0	278,935	0
		Subtotal:	30	0	0.00	0	278,935	0
		Total:	74	0	0.00	0	529,965	0

Tennessee Department of Agriculture Business Type Violation Analysis Report

Data Sorted with All Parameters

PULL DATE ranges from 7/1/2007 TO 6/30/2008

Today: 08/13/2008

<i>Bus Type</i>	<i>Prod Code</i>	<i>Grade</i>	<i>Total Samples</i>	<i>Samples in Violation</i>	<i>%</i>	<i>Test Violation Total</i>	<i>Total Volume (Gals)</i>	<i>Total in Violation</i>
Distributor								
	BD	BDBS	13	5	38.46	7	33,933	12,702
Subtotal:			13	5	38.46	7	33,933	12,702
	BDB	B20LS	1	1	100.00	1	5,419	5,419
Subtotal:			1	1	100.00	1	5,419	5,419
	D	2D	27	0	0.00	0	173,702	0
	D	2D LS	27	0	0.00	0	137,225	0
	D	2D ULSD 1!	46	1	2.17	1	325,105	5,724
Subtotal:			100	1	1.00	1	636,032	5,724
	E85	E-85	1	0	0.00	0	4,543	0
Subtotal:			1	0	0.00	0	4,543	0
	G	MG	4	0	0.00	0	20,035	0
	G	PU	32	4	12.50	5	123,409	14,460
	G	RU	39	1	2.56	1	261,309	8,292
Subtotal:			75	5	6.67	6	404,753	22,752
	K	1K	9	0	0.00	0	32,159	0
Subtotal:			9	0	0.00	0	32,159	0
Total:			199	12	6.03	15	1,116,839	46,597

Test Violation Detail Listing

1	Octane	6.67%
1	Flash Point	6.67%
2	Oxygenates	13.33%
2	Vapor Pressure	13.33%
1	Distillation	6.67%
2	Phosphorous	13.33%
1	Biodiesel Blend	6.67%
5	Oxidation	33.33%

Tennessee Department of Agriculture Business Type Violation Analysis Report

Data Sorted with All Parameters

PULL DATE ranges from 7/1/2007 TO 6/30/2008

Today: 08/13/2008

<i>Bus Type</i>	<i>Prod Code</i>	<i>Grade</i>	<i>Total Samples</i>	<i>Samples in Violation</i>	<i>%</i>	<i>Test Violation Total</i>	<i>Total Volume (Gals)</i>	<i>Total in Violation</i>
Individual	K	1K	1	0	0.00	0	982	0
Subtotal:			1	0	0.00	0	982	0
Total:			1	0	0.00	0	982	0

Tennessee Department of Agriculture Business Type Violation Analysis Report

Data Sorted with All Parameters

PULL DATE ranges from 7/1/2007 TO 6/30/2008

Today: 08/13/2008

<i>Bus Type</i>	<i>Prod Code</i>	<i>Grade</i>	<i>Total Samples</i>	<i>Samples in Violation</i>	<i>%</i>	<i>Test Violation Total</i>	<i>Total Volume (Gals)</i>	<i>Total in Violation</i>
Marina								
	D	2D	6	0	0.00	0	10,561	0
	D	2D LS	5	0	0.00	0	6,059	0
	D	2D ULSD 1!	3	0	0.00	0	5,294	0
		Subtotal:	14	0	0.00	0	21,914	0
	G	MG	55	0	0.00	0	118,445	0
	G	PU	20	0	0.00	0	32,035	0
	G	RU	31	0	0.00	0	48,030	0
		Subtotal:	106	0	0.00	0	198,510	0
		Total:	120	0	0.00	0	220,424	0

Tennessee Department of Agriculture Business Type Violation Analysis Report

Data Sorted with All Parameters

PULL DATE ranges from 7/1/2007 TO 6/30/2008

Today: 08/13/2008

<i>Bus Type</i>	<i>Prod Code</i>	<i>Grade</i>	<i>Total Samples</i>	<i>Samples in Violation</i>	<i>%</i>	<i>Test Violation Total</i>	<i>Total Volume (Gals)</i>	<i>Total in Violation</i>
Other								
	BD	BDBS	1	0	0.00	0	270	0
		Subtotal:	1	0	0.00	0	270	0
	BDB	B20LS	1	0	0.00	0	4,917	0
		Subtotal:	1	0	0.00	0	4,917	0
	D	2D	3	0	0.00	0	82,799	0
	D	2D LS	3	1	33.33	1	3,352,341	321
	D	2D ULSD 1!	4	0	0.00	0	426,020	0
		Subtotal:	10	1	10.00	1	3,861,160	321
	G	PU	7	0	0.00	0	1,610,273	0
	G	RU	1	0	0.00	0	1,700	0
		Subtotal:	8	0	0.00	0	1,611,973	0
	JF	JA	1	0	0.00	0	62,496	0
		Subtotal:	1	0	0.00	0	62,496	0
		Total:	21	1	4.76	1	5,540,816	321

Test Violation Detail Listing

1	Flash Point	100.00%
---	-------------	---------

Tennessee Department of Agriculture Business Type Violation Analysis Report

Data Sorted with All Parameters

PULL DATE ranges from 7/1/2007 TO 6/30/2008

Today: 08/13/2008

<i>Bus Type</i>	<i>Prod Code</i>	<i>Grade</i>	<i>Total Samples</i>	<i>Samples in Violation</i>	<i>%</i>	<i>Test Violation Total</i>	<i>Total Volume (Gals)</i>	<i>Total in Violation</i>
Retailer								
	AG	100LL	2	0	0.00	0	492,451	0
		Subtotal:	2	0	0.00	0	492,451	0
	BD	BDBS	17	7	41.18	13	142,956	42,978
		Subtotal:	17	7	41.18	13	142,956	42,978
	BDB	B10 ULSD	2	1	50.00	1	73,259	1,259
	BDB	B10LS	9	4	44.44	4	108,152	47,851
	BDB	B20 ULSD	3	0	0.00	0	9,559	0
	BDB	B20LS	19	4	21.05	5	50,385	19,004
	BDB	B5 LS	5	1	20.00	1	31,665	1,745
	BDB	B5 ULSD	1	1	100.00	1	7,823	7,823
	BDB	B5-20	22	5	22.73	5	91,095	16,943
	BDB	B5-20 ULSD	4	2	50.00	2	17,633	3,628
		Subtotal:	65	18	27.69	19	389,571	98,253
	D	2D	72	4	5.56	4	312,932	92,908
	D	2D LS	394	13	3.30	13	2,417,340	11,947
	D	2D ULSD 15	1,149	29	2.52	29	8,454,072	57,891
		Subtotal:	1,615	46	2.85	46	11,184,344	162,746
	DFE	E100	1	0	0.00	0	182,784	0
		Subtotal:	1	0	0.00	0	182,784	0
	E85	E-85	25	4	16.00	7	47,611	4,420
		Subtotal:	25	4	16.00	7	47,611	4,420
	G	MG	1,487	44	2.96	66	4,162,962	149,531
	G	PU	2,208	161	7.29	221	6,880,794	373,982
	G	RU	1,788	72	4.03	104	10,073,607	387,879
		Subtotal:	5,483	277	5.05	391	21,117,363	911,392
	JF	JA	1	0	0.00	0	13,559	0
		Subtotal:	1	0	0.00	0	13,559	0
	K	1K	347	12	3.46	12	296,555	4,886

Tennessee Department of Agriculture Business Type Violation Analysis Report

Data Sorted with All Parameters

PULL DATE ranges from 7/1/2007 TO 6/30/2008

Today: 08/13/2008

<i>Bus Type</i>	<i>Prod Code</i>	<i>Grade</i>	<i>Total Samples</i>	<i>Samples in Violation</i>	<i>%</i>	<i>Test Violation Total</i>	<i>Total Volume (Gals)</i>	<i>Total in Violation</i>
Subtotal:			347	12	3.46	12	296,555	4,886
Total:			7,556	364	4.82	488	33,867,194	1,224,675

Test Violation Detail Listing

44	Octane	9.07%
46	Flash Point	9.48%
173	Oxygenates	35.67%
113	Vapor Pressure	23.30%
30	Workmanship (Appearance)	6.19%
14	Phase Separation	2.89%
12	Saybolt Color	2.47%
2	Sulfur	0.41%
19	Distillation	3.92%
1	Acid Number	0.21%
2	Glycerine	0.41%
3	Phosphorous	0.62%
16	Biodiesel Blend	3.30%
5	Oxidation	1.03%
1	E-85 Hydrocarbons & Aliphatic	0.21%
	Ethers	
2	E85 Chlorides	0.41%
2	E85 Water	0.41%

Tennessee Department of Agriculture Business Type Violation Analysis Report

Data Sorted with All Parameters

PULL DATE ranges from 7/1/2007 TO 6/30/2008

Today: 08/13/2008

<i>Bus Type</i>	<i>Prod Code</i>	<i>Grade</i>	<i>Total Samples</i>	<i>Samples in Violation</i>	<i>%</i>	<i>Test Violation Total</i>	<i>Total Volume (Gals)</i>	<i>Total in Violation</i>
Terminal								
	AG	100LL	2	0	0.00	0	579,653	0
		Subtotal:	2	0	0.00	0	579,653	0
	BD	BDBS	9	2	22.22	2	113,580	3,400
		Subtotal:	9	2	22.22	2	113,580	3,400
	D	2D	1	0	0.00	0	2,028,997	0
	D	2D LS	30	0	0.00	0	23,296,680	0
	D	2D ULSD 1!	67	0	0.00	0	40,615,488	0
		Subtotal:	98	0	0.00	0	65,941,165	0
	DFE	E100	7	0	0.00	0	1,502,964	0
		Subtotal:	7	0	0.00	0	1,502,964	0
	G	MG	1	0	0.00	0	3,847	0
	G	PU	79	0	0.00	0	38,853,470	0
	G	RU	83	2	2.41	2	92,792,525	1,997,928
		Subtotal:	163	2	1.23	2	131,649,842	1,997,928
	JF	JA	6	0	0.00	0	1,485,935	0
		Subtotal:	6	0	0.00	0	1,485,935	0
		Total:	285	4	1.40	4	201,273,139	2,001,328

Test Violation Detail Listing

2	Distillation	50.00%
1	Cloud Point	25.00%
1	Oxidation	25.00%

Tennessee Department of Agriculture Inspection Type Violation Analysis Report

PULL DATE ranges from 7/1/2007 TO 6/30/2008

Today : 08/13/2008

<i>Insp Type</i>	<i>Prod Code</i>	<i>Grade</i>	<i>Total Samples</i>	<i>Samples in Violation</i>	<i>%</i>	<i>Test Violation Total</i>	<i>Total Volume (Gals)</i>	<i>Total in Violation</i>
Complaint	BDB	B5-20	1	1	100.00	1	3,345	3,345
Subtotal:			1	1	100.00	1	3,345	3,345
D	2D		1	0	0.00	0	1,763	0
D	2D LS		5	1	20.00	1	23,180	149
D	2D ULSD 1!		13	2	15.38	2	30,183	5,815
Subtotal:			19	3	15.79	3	55,126	5,964
G	MG		26	3	11.54	5	76,018	9,282
G	PU		43	11	25.58	13	142,377	24,451
G	RU		70	4	5.71	5	496,092	41,188
Subtotal:			139	18	12.95	23	714,487	74,921
Total:			159	22	13.84	27	772,958	84,230

Test Violation Detail Listing

2	Octane	7.41%
3	Flash Point	11.11%
6	Oxygenates	22.22%
6	Vapor Pressure	22.22%
7	Workmanship (Appearance)	25.93%
2	Phase Separation	7.41%
1	Biodiesel Blend	3.70%

Tennessee Department of Agriculture Inspection Type Violation Analysis Report

PULL DATE ranges from 7/1/2007 TO 6/30/2008

Today : 08/13/2008

<i>Insp Type</i>	<i>Prod Code</i>	<i>Grade</i>	<i>Total Samples</i>	<i>Samples in Violation</i>	<i>%</i>	<i>Test Violation Total</i>	<i>Total Volume (Gals)</i>	<i>Total in Violation</i>
Follow-Up	BD	BDBS	1	0	0.00	0	9,011	0
	Subtotal:		1	0	0.00	0	9,011	0
	BDB	B20LS	1	0	0.00	0	3,857	0
	BDB	B5-20	1	0	0.00	0	3,396	0
	BDB	B5-20 ULSE	1	1	100.00	1	1,360	1,360
	Subtotal:		3	1	33.33	1	8,613	1,360
	D	2D	1	0	0.00	0	3,125	0
	D	2D LS	9	1	11.11	1	10,438	321
	D	2D ULSD 1!	11	0	0.00	0	15,981	0
	Subtotal:		21	1	4.76	1	29,544	321
	E85	E-85	2	0	0.00	0	5,280	0
	Subtotal:		2	0	0.00	0	5,280	0
	G	MG	16	0	0.00	0	45,256	0
	G	PU	32	6	18.75	8	76,395	9,168
	G	RU	20	0	0.00	0	81,134	0
	Subtotal:		68	6	8.82	8	202,785	9,168
	Total:		95	8	8.42	10	255,233	10,849

**Tennessee Department of Agriculture
Inspection Type Violation Analysis Report**

PULL DATE ranges from 7/1/2007 TO 6/30/2008

Today : 08/13/2008

<i>Insp Type</i>	<i>Prod Code</i>	<i>Grade</i>	<i>Total Samples</i>	<i>Samples in Violation</i>	<i>%</i>	<i>Test Violation Total</i>	<i>Total Volume (Gals)</i>	<i>Total in Violation</i>
----------------------	----------------------	--------------	--------------------------	-------------------------------------	----------	-------------------------------------	------------------------------------	-----------------------------------

Test Violation Detail Listing

1				Octane		11.11%		
1				Flash Point		11.11%		
2				Oxygenates		22.22%		
2				Vapor Pressure		22.22%		
1				Workmanship (Appearance)		11.11%		
1				Phase Separation		11.11%		
1				Distillation		11.11%		

Tennessee Department of Agriculture Inspection Type Violation Analysis Report

PULL DATE ranges from 7/1/2007 TO 6/30/2008

Today : 08/13/2008

<i>Insp Type</i>	<i>Prod Code</i>	<i>Grade</i>	<i>Total Samples</i>	<i>Samples in Violation</i>	<i>%</i>	<i>Test Violation Total</i>	<i>Total Volume (Gals)</i>	<i>Total in Violation</i>
Office Request								
	BD	BDBS	10	3	30.00	7	116,836	17,022
Subtotal:			10	3	30.00	7	116,836	17,022
	BDB	B10 ULSD	1	0	0.00	0	72,000	0
	BDB	B20LS	1	1	100.00	1	1,560	1,560
	BDB	B5 LS	1	0	0.00	0	15,682	0
	BDB	B5-20	2	0	0.00	0	8,864	0
Subtotal:			5	1	20.00	1	98,106	1,560
	D	2D	4	1	25.00	1	130,294	47,495
	D	2D LS	1	0	0.00	0	2,015	0
	D	2D ULSD 1!	4	0	0.00	0	8,062	0
Subtotal:			9	1	11.11	1	140,371	47,495
	E85	E-85	4	0	0.00	0	7,663	0
Subtotal:			4	0	0.00	0	7,663	0
	G	MG	6	2	33.33	3	11,609	3,674
	G	PU	15	5	33.33	8	3,571,518	10,201
	G	RU	10	0	0.00	0	37,339	0
Subtotal:			31	7	22.58	11	3,620,466	13,875
	K	1K	5	0	0.00	0	8,666	0
Subtotal:			5	0	0.00	0	8,666	0
Total:			64	12	18.75	20	3,992,108	79,952

**Tennessee Department of Agriculture
Inspection Type Violation Analysis Report**

PULL DATE ranges from 7/1/2007 TO 6/30/2008

Today : 08/13/2008

<i>Insp Type</i>	<i>Prod Code</i>	<i>Grade</i>	<i>Total Samples</i>	<i>Samples in Violation</i>	<i>%</i>	<i>Test Violation Total</i>	<i>Total Volume (Gals)</i>	<i>Total in Violation</i>
----------------------	----------------------	--------------	--------------------------	-------------------------------------	----------	-------------------------------------	------------------------------------	-----------------------------------

Test Violation Detail Listing

1						Octane		5.00%
1						Flash Point		5.00%
2						Oxygenates		10.00%
2						Vapor Pressure		10.00%
3						Workmanship (Appearance)		15.00%
3						Phase Separation		15.00%
1						Glycerine		5.00%
3						Phosphorous		15.00%
2						Biodiesel Blend		10.00%
2						Oxidation		10.00%

Tennessee Department of Agriculture Inspection Type Violation Analysis Report

PULL DATE ranges from 7/1/2007 TO 6/30/2008

Today : 08/13/2008

<i>Insp Type</i>	<i>Prod Code</i>	<i>Grade</i>	<i>Total Samples</i>	<i>Samples in Violation</i>	<i>%</i>	<i>Test Violation Total</i>	<i>Total Volume (Gals)</i>	<i>Total in Violation</i>
Random	AG	100LL	43	0	0.00	0	1,301,681	0
	Subtotal:		43	0	0.00	0	1,301,681	0
	BD	BDBS	29	11	37.93	15	164,892	42,058
	Subtotal:		29	11	37.93	15	164,892	42,058
	BDB	B10 ULSD	1	1	100.00	1	1,259	1,259
	BDB	B10LS	9	4	44.44	4	108,152	47,851
	BDB	B20 ULSD	3	0	0.00	0	9,559	0
	BDB	B20LS	19	4	21.05	5	55,304	22,863
	BDB	B5 LS	4	1	25.00	1	15,983	1,745
	BDB	B5 ULSD	1	1	100.00	1	7,823	7,823
	BDB	B5-20	18	4	22.22	4	75,490	13,598
	BDB	B5-20 ULSD	3	1	33.33	1	16,273	2,268
	Subtotal:		58	16	27.59	17	289,843	97,407
	D	2D	103	3	2.91	3	2,473,809	45,413
	D	2D LS	444	12	2.70	12	29,174,012	11,798
	D	2D ULSD 1!	1,241	28	2.26	28	49,771,753	57,800
	Subtotal:		1788	43	2.40	43	81,419,574	115,011
	DFE	E100	8	0	0.00	0	1,685,748	0
	Subtotal:		8	0	0.00	0	1,685,748	0
	E85	E-85	20	4	20.00	7	39,211	4,420
	Subtotal:		20	4	20.00	7	39,211	4,420

Tennessee Department of Agriculture Inspection Type Violation Analysis Report

PULL DATE ranges from 7/1/2007 TO 6/30/2008

Today : 08/13/2008

<i>Insp Type</i>	<i>Prod Code</i>	<i>Grade</i>	<i>Total Samples</i>	<i>Samples in Violation</i>	<i>%</i>	<i>Test Violation Total</i>	<i>Total Volume (Gals)</i>	<i>Total in Violation</i>
G	MG		1,501	39	2.60	58	4,180,778	136,575
G	PU		2,257	143	6.34	197	43,711,141	344,622
G	RU		1,844	71	3.85	102	102,574,237	2,352,911
Subtotal:			5602	253	4.52	357	150,466,156	2,834,108
JF	JA		38	0	0.00	0	1,840,925	0
Subtotal:			38	0	0.00	0	1,840,925	0
K	1K		352	12	3.41	12	321,030	4,886
Subtotal:			352	12	3.41	12	321,030	4,886
Total:			7938	339	4.27	451	237,529,060	3,097,890

Test Violation Detail Listing

41	Octane	9.13%
43	Flash Point	9.58%
165	Oxygenates	36.75%
105	Vapor Pressure	23.39%
19	Workmanship (Appearance)	4.23%
8	Phase Separation	1.78%
12	Saybolt Color	2.67%
2	Sulfur	0.45%
21	Distillation	4.68%
1	Acid Number	0.22%
1	Glycerine	0.22%
1	Cloud Point	0.22%
2	Phosphorous	0.45%
14	Biodiesel Blend	3.12%
9	Oxidation	2.00%
1	E-85 Hydrocarbons & Aliphatic Ethers	0.22%
2	E85 Chlorides	0.45%
2	E85 Water	0.45%

Tennessee Department of Agriculture County Summary Short Report

PULL DATE ranges from 7/1/2007 TO 6/30/2008

Today: 08/14/2008

<i>County</i>	<i>Prod Code</i>	<i>Total Samples</i>	<i>Samples in Violation</i>	<i>%</i>	<i>Test Violation Total</i>	<i>Total Volume (Gals)</i>	<i>Total in Violation</i>
Anderson							
	D	27	0	0.00	0	81,552.00	0
	G	63	1	1.59	1	189,561.00	2,338
	K	1	0	0.00	0	448.00	0
	Total:	91	1	1.10	1	271,561.00	2,338
Bedford							
	AG	1	0	0.00	0	3,296.00	0
	BDB	1	0	0.00	0	3,664.00	0
	D	17	2	11.76	2	48,172.00	1,131
	G	47	0	0.00	0	118,251.00	0
	JF	1	0	0.00	0	8,405.00	0
	K	7	0	0.00	0	2,420.00	0
	Total:	74	2	2.70	2	184,208.00	1,131
Benton							
	AG	1	0	0.00	0	4,365.00	0
	D	11	2	18.18	2	38,587.00	4,359
	G	18	1	5.56	1	43,351.00	0
	JF	1	0	0.00	0	4,083.00	0
	K	1	0	0.00	0	3,233.00	0
	Total:	32	3	9.38	3	93,619.00	4,359
Bledsoe							
	D	8	0	0.00	0	24,856.00	0
	G	19	2	10.53	2	48,412.00	1,440
	K	3	0	0.00	0	180.00	0

Tennessee Department of Agriculture County Summary Short Report

PULL DATE ranges from 7/1/2007 TO 6/30/2008

Today: 08/14/2008

<i>County</i>	<i>Prod Code</i>	<i>Total Samples</i>	<i>Samples in Violation</i>	<i>%</i>	<i>Test Violation Total</i>	<i>Total Volume (Gals)</i>	<i>Total in Violation</i>
	Total:	30	2	6.67	2	73,448.00	1,440
Blount	BD	4	1	25.00	1	25,415.00	5,700
	BDB	4	0	0.00	0	2,944.00	0
	D	48	2	4.17	2	155,864.00	2,671
	G	114	4	3.51	5	397,886.00	4,459
	K	6	0	0.00	0	6,499.00	0
	Total:	176	7	3.98	8	588,608.00	12,830
Bradley	BDB	2	0	0.00	0	2,471.00	0
	D	23	0	0.00	0	70,380.00	0
	G	108	1	0.93	2	340,515.00	3,177
	K	3	0	0.00	0	4,997.00	0
	Total:	136	1	0.74	2	418,363.00	3,177
Campbell	AG	1	0	0.00	0	2,000.00	0
	D	26	1	3.85	1	117,809.00	633
	G	43	2	4.65	2	162,426.00	8,742
	K	2	0	0.00	0	1,688.00	0
	Total:	72	3	4.17	3	283,923.00	9,375
Cannon	D	4	0	0.00	0	2,842.00	0
	G	14	1	7.14	1	41,769.00	118
	K	2	0	0.00	0	1,197.00	0

Tennessee Department of Agriculture County Summary Short Report

PULL DATE ranges from 7/1/2007 TO 6/30/2008

Today: 08/14/2008

<i>County</i>	<i>Prod Code</i>	<i>Total Samples</i>	<i>Samples in Violation</i>	<i>%</i>	<i>Test Violation Total</i>	<i>Total Volume (Gals)</i>	<i>Total in Violation</i>
	Total:	20	1	5.00	1	45,808.00	118
Carroll	D	11	0	0.00	0	21,464.00	0
	G	41	4	9.76	6	85,383.00	5,868
	K	5	0	0.00	0	3,470.00	0
	Total:	57	4	7.02	6	110,317.00	5,868
Carter	AG	1	0	0.00	0	4,672.00	0
	D	11	0	0.00	0	25,481.00	0
	G	38	2	5.26	3	116,414.00	1,501
	JF	1	0	0.00	0	8,273.00	0
	K	4	0	0.00	0	7,033.00	0
	Total:	55	2	3.64	3	161,873.00	1,501
Cheatham	D	23	0	0.00	0	61,777.00	0
	G	47	7	14.89	10	129,225.00	7,956
	K	3	0	0.00	0	1,395.00	0
	Total:	73	7	9.59	10	192,397.00	7,956
Chester	BDB	1	0	0.00	0	1,214.00	0
	D	5	0	0.00	0	12,947.00	0
	G	17	0	0.00	0	42,246.00	0
	Total:	23	0	0.00	0	56,407.00	0
Claiborne	D	18	0	0.00	0	32,381.00	0

Tennessee Department of Agriculture County Summary Short Report

PULL DATE ranges from 7/1/2007 TO 6/30/2008

Today: 08/14/2008

<i>County</i>	<i>Prod Code</i>	<i>Total Samples</i>	<i>Samples in Violation</i>	<i>%</i>	<i>Test Violation Total</i>	<i>Total Volume (Gals)</i>	<i>Total in Violation</i>
	G	34	1	2.94	1	62,396.00	367
	K	5	0	0.00	0	2,906.00	0
	Total:	57	1	1.75	1	97,683.00	367
Clay	D	4	0	0.00	0	3,832.00	0
	G	17	0	0.00	0	23,154.00	0
	Total:	21	0	0.00	0	26,986.00	0
Cocke	BDB	1	0	0.00	0	1,950.00	0
	D	13	0	0.00	0	39,602.00	0
	G	61	8	13.11	10	234,707.00	16,250
	K	1	0	0.00	0	400.00	0
	Total:	76	8	10.53	10	276,659.00	16,250
Coffee	AG	1	0	0.00	0	4,558.00	0
	BD	2	1	50.00	1	3,400.00	1,700
	D	18	0	0.00	0	77,096.00	0
	G	71	1	1.41	1	264,931.00	5,831
	JF	1	0	0.00	0	1,592.00	0
	K	9	1	11.11	1	4,104.00	310
	Total:	102	3	2.94	3	355,681.00	7,841
Crockett	BD	1	1	100.00	2	230.00	230
	BDB	1	1	100.00	1	7,823.00	7,823

Tennessee Department of Agriculture County Summary Short Report

PULL DATE ranges from 7/1/2007 TO 6/30/2008

Today: 08/14/2008

<i>County</i>	<i>Prod Code</i>	<i>Total Samples</i>	<i>Samples in Violation</i>	<i>%</i>	<i>Test Violation Total</i>	<i>Total Volume (Gals)</i>	<i>Total in Violation</i>
	D	5	0	0.00	0	16,150.00	0
	G	16	1	6.25	1	36,005.00	8,292
	Total:	23	3	13.04	4	60,208.00	16,345
Cumberland	AG	1	0	0.00	0	1,442.00	0
	D	27	0	0.00	0	146,186.00	0
	G	73	2	2.74	2	212,958.07	12,718
	JF	1	0	0.00	0	4,941.00	0
	K	2	0	0.00	0	1,728.00	0
	Total:	104	2	1.92	2	367,255.07	12,718
Davidson	AG	3	0	0.00	0	43,822.00	0
	BD	1	0	0.00	0	7,329.00	0
	BDB	10	3	30.00	3	21,976.00	4,213
	D	155	7	4.52	7	16,902,167.00	7,157
	DFE	6	0	0.00	0	279,345.50	0
	E85	4	0	0.00	0	11,204.00	0
	G	521	35	6.72	51	48,542,241.64	131,633
	JF	3	0	0.00	0	57,795.00	0
	K	27	2	7.41	2	29,571.00	1,179
	Total:	730	47	6.44	63	65,895,451.14	144,182
Decatur	BD	1	1	100.00	1	400.00	400

Tennessee Department of Agriculture County Summary Short Report

PULL DATE ranges from 7/1/2007 TO 6/30/2008

Today: 08/14/2008

<i>County</i>	<i>Prod Code</i>	<i>Total Samples</i>	<i>Samples in Violation</i>	<i>%</i>	<i>Test Violation Total</i>	<i>Total Volume (Gals)</i>	<i>Total in Violation</i>
	D	9	0	0.00	0	33,474.00	0
	G	22	0	0.00	0	48,501.00	0
	K	2	0	0.00	0	2,327.00	0
	Total:	34	1	2.94	1	84,702.00	400
Dekalb	AG	1	0	0.00	0	1,350.00	0
	D	7	0	0.00	0	8,841.00	0
	G	28	0	0.00	0	77,815.00	0
	K	2	0	0.00	0	1,233.00	0
	Total:	38	0	0.00	0	89,239.00	0
Dickson	AG	1	0	0.00	0	1,218.00	0
	D	30	1	3.33	1	97,858.00	481
	G	50	3	6.00	3	151,936.00	3,269
	JF	1	0	0.00	0	1,504.00	0
	K	6	0	0.00	0	3,729.00	0
	Total:	88	4	4.55	4	256,245.00	3,750
Dyer	BD	2	1	50.00	1	2,640.00	540
	D	13	0	0.00	0	37,445.00	0
	G	42	1	2.38	2	87,738.00	332
	Total:	57	2	3.51	3	127,823.00	872
Fayette	AG	1	0	0.00	0	661.00	0

Tennessee Department of Agriculture County Summary Short Report

PULL DATE ranges from 7/1/2007 TO 6/30/2008

Today: 08/14/2008

<i>County</i>	<i>Prod Code</i>	<i>Total Samples</i>	<i>Samples in Violation</i>	<i>%</i>	<i>Test Violation Total</i>	<i>Total Volume (Gals)</i>	<i>Total in Violation</i>
	BDB	2	1	50.00	1	7,760.00	1,169
	D	8	0	0.00	0	28,816.00	0
	G	32	0	0.00	0	65,364.00	0
	Total:	43	1	2.33	1	102,601.00	1,169
Fentress							
	D	8	0	0.00	0	24,618.00	0
	G	25	0	0.00	0	73,675.00	0
	K	1	0	0.00	0	85.00	0
	Total:	34	0	0.00	0	98,378.00	0
Franklin							
	AG	3	0	0.00	0	10,489.00	0
	BDB	6	0	0.00	0	34,409.00	0
	D	9	0	0.00	0	28,387.00	0
	G	45	1	2.22	1	114,591.00	10,777
	JF	1	0	0.00	0	6,080.00	0
	K	8	0	0.00	0	5,347.00	0
	Total:	72	1	1.39	1	199,303.00	10,777
Gibson							
	AG	1	0	0.00	0	2,498.00	0
	BD	1	1	100.00	3	4,000.00	4,000
	BDB	2	0	0.00	0	13,269.00	0
	D	21	1	4.76	1	51,588.00	1,970
	G	47	2	4.26	2	97,858.00	3,640

Tennessee Department of Agriculture County Summary Short Report

PULL DATE ranges from 7/1/2007 TO 6/30/2008

Today: 08/14/2008

<i>County</i>	<i>Prod Code</i>	<i>Total Samples</i>	<i>Samples in Violation</i>	<i>%</i>	<i>Test Violation Total</i>	<i>Total Volume (Gals)</i>	<i>Total in Violation</i>
	JF	1	0	0.00	0	600.00	0
	K	4	0	0.00	0	3,129.00	0
	Total:	77	4	5.19	6	172,942.00	9,610
Giles	AG	1	0	0.00	0	2,200.00	0
	BD	4	0	0.00	0	5,623.00	0
	D	16	0	0.00	0	71,148.00	0
	G	42	2	4.76	3	137,458.30	5,224
	JF	1	0	0.00	0	9,000.00	0
	K	2	0	0.00	0	2,173.00	0
	Total:	66	2	3.03	3	227,602.30	5,224
Grainger	D	4	0	0.00	0	8,893.00	0
	G	8	0	0.00	0	38,165.00	0
	Total:	12	0	0.00	0	47,058.00	0
Greene	D	40	0	0.00	0	114,401.00	0
	G	92	7	7.61	8	458,484.00	35,275
	K	2	0	0.00	0	2,307.00	0
	Total:	134	7	5.22	8	575,192.00	35,275
Grundy	D	6	0	0.00	0	8,717.00	0
	G	27	2	7.41	3	63,798.00	6,660
	K	2	0	0.00	0	624.00	0

Tennessee Department of Agriculture County Summary Short Report

PULL DATE ranges from 7/1/2007 TO 6/30/2008

Today: 08/14/2008

<i>County</i>	<i>Prod Code</i>	<i>Total Samples</i>	<i>Samples in Violation</i>	<i>%</i>	<i>Test Violation Total</i>	<i>Total Volume (Gals)</i>	<i>Total in Violation</i>
	Total:	35	2	5.71	3	73,139.00	6,660
Hamblen	D	11	0	0.00	0	39,188.00	0
	G	28	1	3.57	1	96,421.00	2,959
	K	1	0	0.00	0	3,261.00	0
	Total:	40	1	2.50	1	138,870.00	2,959
Hamilton	BD	1	1	100.00	1	684.00	684
	BDB	1	1	100.00	1	5,443.00	5,443
	D	75	2	2.67	2	9,837,247.00	10,550
	G	330	6	1.82	7	17,120,399.80	1,646,240
	K	17	0	0.00	0	24,386.00	0
	Total:	424	10	2.36	11	26,988,159.80	1,662,917
Hancock	D	3	0	0.00	0	5,639.00	0
	G	3	0	0.00	0	9,483.00	0
	Total:	6	0	0.00	0	15,122.00	0
Hardeman	BDB	1	1	100.00	1	1,745.00	1,745
	D	13	0	0.00	0	33,674.00	0
	G	39	1	2.56	1	75,005.00	394
	K	1	0	0.00	0	72.00	0
	Total:	54	2	3.70	2	110,496.00	2,139
Hardin	D	13	0	0.00	0	43,160.00	0

Tennessee Department of Agriculture County Summary Short Report

PULL DATE ranges from 7/1/2007 TO 6/30/2008

Today: 08/14/2008

<i>County</i>	<i>Prod Code</i>	<i>Total Samples</i>	<i>Samples in Violation</i>	<i>%</i>	<i>Test Violation Total</i>	<i>Total Volume (Gals)</i>	<i>Total in Violation</i>
	G	47	2	4.26	3	114,965.00	3,812
	K	2	0	0.00	0	1,480.00	0
	Total:	62	2	3.23	3	159,605.00	3,812
Hawkins	AG	1	0	0.00	0	1,125.00	0
	BD	2	0	0.00	0	870.00	0
	D	10	0	0.00	0	26,758.00	0
	G	42	1	2.38	1	184,912.00	2,038
	K	5	0	0.00	0	2,971.00	0
	Total:	60	1	1.67	1	216,636.00	2,038
Haywood	BD	1	1	100.00	2	2,400.00	2,400
	BDB	1	1	100.00	1	8,722.00	8,722
	D	6	0	0.00	0	24,226.00	0
	G	18	1	5.56	1	52,368.00	840
	K	1	0	0.00	0	610.00	0
	Total:	27	3	11.11	4	88,326.00	11,962
Henderson	AG	1	0	0.00	0	5,657.00	0
	BDB	1	0	0.00	0	3,600.00	0
	D	10	0	0.00	0	61,839.00	0
	G	38	5	13.16	5	117,427.00	18,762
	JF	1	0	0.00	0	4,304.00	0

Tennessee Department of Agriculture County Summary Short Report

PULL DATE ranges from 7/1/2007 TO 6/30/2008

Today: 08/14/2008

<i>County</i>	<i>Prod Code</i>	<i>Total Samples</i>	<i>Samples in Violation</i>	<i>%</i>	<i>Test Violation Total</i>	<i>Total Volume (Gals)</i>	<i>Total in Violation</i>
	K	4	0	0.00	0	7,565.00	0
	Total:	55	5	9.09	5	200,392.00	18,762
Henry	AG	1	0	0.00	0	7,533.00	0
	D	13	0	0.00	0	31,850.00	0
	G	38	0	0.00	0	117,221.00	0
	K	5	0	0.00	0	5,641.00	0
	Total:	57	0	0.00	0	162,245.00	0
Hickman	D	5	1	20.00	1	9,655.50	4,178
	G	27	1	3.70	1	107,468.10	4,296
	K	3	0	0.00	0	2,535.00	0
	Total:	35	2	5.71	2	119,658.60	8,474
Houston	D	8	0	0.00	0	7,553.00	0
	G	12	2	16.67	3	25,996.00	2,557
	K	1	0	0.00	0	385.00	0
	Total:	21	2	9.52	3	33,934.00	2,557
Humphreys	D	14	0	0.00	0	66,341.00	0
	G	31	3	9.68	5	82,108.00	11,611
	JF	1	0	0.00	0	3,648.00	0
	Total:	46	3	6.52	5	152,097.00	11,611
Jackson	D	7	1	14.29	1	4,447.00	458

Tennessee Department of Agriculture County Summary Short Report

PULL DATE ranges from 7/1/2007 TO 6/30/2008

Today: 08/14/2008

<i>County</i>	<i>Prod Code</i>	<i>Total Samples</i>	<i>Samples in Violation</i>	<i>%</i>	<i>Test Violation Total</i>	<i>Total Volume (Gals)</i>	<i>Total in Violation</i>
	G	13	1	7.69	1	23,040.00	325
	K	1	0	0.00	0	150.00	0
	Total:	21	2	9.52	2	27,637.00	783
Jefferson	D	17	1	5.88	1	53,057.00	59
	G	35	3	8.57	3	155,640.00	10,324
	K	1	0	0.00	0	506.00	0
	Total:	53	4	7.55	4	209,203.00	10,383
Johnson	D	6	0	0.00	0	14,344.00	0
	G	13	0	0.00	0	47,446.00	0
	K	1	0	0.00	0	922.00	0
	Total:	20	0	0.00	0	62,712.00	0
Knox	BD	4	1	25.00	2	44,591.00	25,000
	BDB	2	1	50.00	1	10,336.00	5,419
	D	155	3	1.94	3	34,994,861.00	3,593
	DFE	1	0	0.00	0	329,406.00	0
	E85	5	1	20.00	2	12,736.00	2,959
	G	348	18	5.17	31	55,434,010.00	430,245
	JF	4	0	0.00	0	899,303.00	0
	K	15	1	6.67	1	22,237.00	385
	Total:	534	25	4.68	40	91,747,480.00	467,601

Tennessee Department of Agriculture County Summary Short Report

PULL DATE ranges from 7/1/2007 TO 6/30/2008

Today: 08/14/2008

<i>County</i>	<i>Prod Code</i>	<i>Total Samples</i>	<i>Samples in Violation</i>	<i>%</i>	<i>Test Violation Total</i>	<i>Total Volume (Gals)</i>	<i>Total in Violation</i>
Lake							
	D	3	0	0.00	0	5,549.00	0
	G	7	0	0.00	0	19,999.00	0
	Total:	10	0	0.00	0	25,548.00	0
Lauderdale							
	BDB	1	0	0.00	0	1,085.00	0
	D	7	0	0.00	0	12,741.00	0
	G	37	2	5.41	3	85,505.00	4,635
	K	1	0	0.00	0	115.00	0
	Total:	46	2	4.35	3	99,446.00	4,635
Lawrence							
	AG	1	0	0.00	0	5,871.00	0
	BD	2	1	50.00	1	3,618.00	3,118
	D	21	0	0.00	0	49,461.80	0
	G	62	4	6.45	7	180,005.10	17,880
	JF	1	0	0.00	0	4,069.00	0
	K	2	0	0.00	0	720.00	0
	Total:	89	5	5.62	8	243,744.90	20,998
Lewis							
	D	7	1	14.29	1	17,247.00	2,450
	G	15	0	0.00	0	26,660.00	0
	K	1	0	0.00	0	1,314.00	0
	Total:	23	1	4.35	1	45,221.00	2,450
Lincoln							
	AG	1	0	0.00	0	4,242.00	0

Tennessee Department of Agriculture County Summary Short Report

PULL DATE ranges from 7/1/2007 TO 6/30/2008

Today: 08/14/2008

<i>County</i>	<i>Prod Code</i>	<i>Total Samples</i>	<i>Samples in Violation</i>	<i>%</i>	<i>Test Violation Total</i>	<i>Total Volume (Gals)</i>	<i>Total in Violation</i>
	D	17	0	0.00	0	58,488.00	0
	G	43	0	0.00	0	101,685.00	0
	JF	1	0	0.00	0	2,116.00	0
	K	1	0	0.00	0	343.00	0
	Total:	63	0	0.00	0	166,874.00	0
Loudon	BDB	1	0	0.00	0	1,673.00	0
	D	16	0	0.00	0	38,504.00	0
	G	68	2	2.94	3	225,696.00	7,042
	K	2	0	0.00	0	1,629.00	0
	Total:	87	2	2.30	3	267,502.00	7,042
McMinn	AG	1	0	0.00	0	1,450.00	0
	BDB	2	1	50.00	1	1,700.00	1,259
	D	13	0	0.00	0	34,836.19	0
	G	75	3	4.00	3	250,703.00	11,854
	K	3	1	33.33	1	2,074.00	959
	Total:	94	5	5.32	5	290,763.19	14,072
McNairy	AG	1	0	0.00	0	6,678.00	0
	D	6	0	0.00	0	30,797.00	0
	G	25	1	4.00	1	46,674.00	2,314
	JF	1	0	0.00	0	5,194.00	0

Tennessee Department of Agriculture County Summary Short Report

PULL DATE ranges from 7/1/2007 TO 6/30/2008

Today: 08/14/2008

<i>County</i>	<i>Prod Code</i>	<i>Total Samples</i>	<i>Samples in Violation</i>	<i>%</i>	<i>Test Violation Total</i>	<i>Total Volume (Gals)</i>	<i>Total in Violation</i>
	Total:	33	1	3.03	1	89,343.00	2,314
Macon	AG	1	0	0.00	0	2,000.00	0
	D	8	0	0.00	0	25,839.00	0
	G	23	0	0.00	0	57,785.00	0
	JF	1	0	0.00	0	1,600.00	0
	K	4	0	0.00	0	2,026.00	0
	Total:	37	0	0.00	0	89,250.00	0
Madison	BDB	1	0	0.00	0	5,049.00	0
	D	32	0	0.00	0	223,637.00	0
	G	113	1	0.88	2	361,339.00	1,704
	K	1	0	0.00	0	427.00	0
	Total:	147	1	0.68	2	590,452.00	1,704
Marion	BDB	1	1	100.00	1	800.00	800
	D	13	0	0.00	0	54,449.00	0
	G	35	0	0.00	0	124,805.00	0
	K	3	0	0.00	0	2,743.00	0
	Total:	52	1	1.92	1	182,797.00	800
Marshall	AG	1	0	0.00	0	3,258.00	0
	D	15	0	0.00	0	49,692.00	0
	E85	1	0	0.00	0	2,807.00	0

Tennessee Department of Agriculture County Summary Short Report

PULL DATE ranges from 7/1/2007 TO 6/30/2008

Today: 08/14/2008

<i>County</i>	<i>Prod Code</i>	<i>Total Samples</i>	<i>Samples in Violation</i>	<i>%</i>	<i>Test Violation Total</i>	<i>Total Volume (Gals)</i>	<i>Total in Violation</i>
	G	38	1	2.63	1	99,999.00	4,702
	JF	1	0	0.00	0	6,919.00	0
	K	4	0	0.00	0	2,314.00	0
	Total:	60	1	1.67	1	164,989.00	4,702
Maury	AG	1	0	0.00	0	8,609.00	0
	D	23	0	0.00	0	89,797.70	0
	E85	2	1	50.00	2	5,298.00	1,087
	G	82	3	3.66	4	206,701.50	7,391
	JF	1	0	0.00	0	8,260.00	0
	K	5	0	0.00	0	3,068.00	0
	Total:	114	4	3.51	6	321,734.20	8,478
Meigs	D	6	0	0.00	0	11,617.00	0
	G	15	0	0.00	0	34,112.00	0
	Total:	21	0	0.00	0	45,729.00	0
Monroe	AG	1	0	0.00	0	1,661.00	0
	D	13	0	0.00	0	38,008.00	0
	G	71	4	5.63	6	198,118.00	12,255
	K	1	0	0.00	0	2,421.00	0
	Total:	86	4	4.65	6	240,208.00	12,255
Montgomery	BD	1	0	0.00	0	1,340.00	0

Tennessee Department of Agriculture County Summary Short Report

PULL DATE ranges from 7/1/2007 TO 6/30/2008

Today: 08/14/2008

<i>County</i>	<i>Prod Code</i>	<i>Total Samples</i>	<i>Samples in Violation</i>	<i>%</i>	<i>Test Violation Total</i>	<i>Total Volume (Gals)</i>	<i>Total in Violation</i>
	BDB	2	1	50.00	1	3,295.00	2,023
	D	45	1	2.22	1	122,742.00	442
	E85	5	0	0.00	0	7,464.00	0
	G	97	1	1.03	1	409,611.00	2,869
	K	3	0	0.00	0	3,641.00	0
	Total:	153	3	1.96	3	548,093.00	5,334
Moore	D	2	0	0.00	0	11,010.00	0
	G	4	0	0.00	0	14,566.00	0
	Total:	6	0	0.00	0	25,576.00	0
Morgan	D	16	2	12.50	2	24,459.00	549
	G	22	0	0.00	0	46,005.00	0
	K	3	0	0.00	0	1,669.00	0
	Total:	41	2	4.88	2	72,133.00	549
Obion	AG	1	0	0.00	0	2,466.00	0
	BD	2	0	0.00	0	6,400.00	0
	BDB	1	0	0.00	0	9,543.00	0
	D	10	0	0.00	0	38,699.00	0
	G	36	1	2.78	1	84,982.00	920
	K	5	0	0.00	0	985.00	0
	Total:	55	1	1.82	1	143,075.00	920

Tennessee Department of Agriculture County Summary Short Report

PULL DATE ranges from 7/1/2007 TO 6/30/2008

Today: 08/14/2008

<i>County</i>	<i>Prod Code</i>	<i>Total Samples</i>	<i>Samples in Violation</i>	<i>%</i>	<i>Test Violation Total</i>	<i>Total Volume (Gals)</i>	<i>Total in Violation</i>
Overton							
	AG	1	0	0.00	0	1,500.00	0
	D	17	0	0.00	0	39,185.00	0
	G	35	0	0.00	0	67,652.00	0
	JF	1	0	0.00	0	1,000.00	0
	K	1	0	0.00	0	1,137.00	0
	Total:	55	0	0.00	0	110,474.00	0
Perry							
	D	5	0	0.00	0	14,315.00	0
	G	14	0	0.00	0	20,973.00	0
	K	2	0	0.00	0	2,045.00	0
	Total:	21	0	0.00	0	37,333.00	0
Pickett							
	D	3	0	0.00	0	13,928.00	0
	G	11	0	0.00	0	23,157.00	0
	Total:	14	0	0.00	0	37,085.00	0
Polk							
	D	9	0	0.00	0	30,191.00	0
	G	30	2	6.67	4	80,770.00	8,169
	Total:	39	2	5.13	4	110,961.00	8,169
Putnam							
	BDB	4	2	50.00	2	26,560.00	13,264
	D	29	0	0.00	0	147,806.00	0
	G	78	2	2.56	2	241,553.00	4,148
	K	2	0	0.00	0	842.00	0

Tennessee Department of Agriculture County Summary Short Report

PULL DATE ranges from 7/1/2007 TO 6/30/2008

Today: 08/14/2008

<i>County</i>	<i>Prod Code</i>	<i>Total Samples</i>	<i>Samples in Violation</i>	<i>%</i>	<i>Test Violation Total</i>	<i>Total Volume (Gals)</i>	<i>Total in Violation</i>
	Total:	113	4	3.54	4	416,761.00	17,412
Rhea							
	AG	1	0	0.00	0	2,118.00	0
	D	17	1	5.88	1	37,981.00	971
	G	53	2	3.77	3	152,038.00	9,019
	JF	1	0	0.00	0	3,035.00	0
	Total:	72	3	4.17	4	195,172.00	9,990
Roane							
	D	22	1	4.55	1	49,141.00	2,039
	G	48	0	0.00	0	133,787.00	0
	K	6	0	0.00	0	7,850.00	0
	Total:	76	1	1.32	1	190,778.00	2,039
Robertson							
	D	33	3	9.09	3	120,168.00	7,346
	E85	2	1	50.00	1	1,443.00	374
	G	69	5	7.25	10	212,894.00	7,010
	K	14	0	0.00	0	7,239.00	0
	Total:	118	9	7.63	14	341,744.00	14,730
Rutherford							
	AG	3	0	0.00	0	65,028.00	0
	BD	1	1	100.00	2	10,622.00	10,622
	BDB	5	0	0.00	0	76,804.00	0
	D	39	5	12.82	5	346,968.00	96,282
	E85	2	1	50.00	2	2,497.00	0

Tennessee Department of Agriculture County Summary Short Report

PULL DATE ranges from 7/1/2007 TO 6/30/2008

Today: 08/14/2008

<i>County</i>	<i>Prod Code</i>	<i>Total Samples</i>	<i>Samples in Violation</i>	<i>%</i>	<i>Test Violation Total</i>	<i>Total Volume (Gals)</i>	<i>Total in Violation</i>
	G	137	1	0.73	2	553,240.00	6,639
	JF	3	0	0.00	0	43,794.00	0
	K	17	4	23.53	4	21,684.00	1,395
	Total:	207	12	5.80	15	1,120,637.00	114,938
Scott							
	D	17	0	0.00	0	48,577.00	0
	G	26	1	3.85	1	68,840.00	108
	K	3	0	0.00	0	2,577.00	0
	Total:	46	1	2.17	1	119,994.00	108
Sequatchie							
	D	6	0	0.00	0	13,795.00	0
	G	17	1	5.88	1	56,149.00	2,264
	K	1	0	0.00	0	110.00	0
	Total:	24	1	4.17	1	70,054.00	2,264
Sevier							
	BDB	1	1	100.00	1	2,268.00	2,268
	D	38	0	0.00	0	93,944.00	0
	G	130	0	0.00	0	634,762.60	0
	Total:	169	1	0.59	1	730,974.60	2,268
Shelby							
	AG	5	0	0.00	0	1,078,754.00	0
	BD	7	1	14.29	1	167,566.00	3,000
	BDB	4	2	50.00	2	119,632.00	45,882
	D	69	1	1.45	1	15,111,473.00	1,074

Tennessee Department of Agriculture County Summary Short Report

PULL DATE ranges from 7/1/2007 TO 6/30/2008

Today: 08/14/2008

<i>County</i>	<i>Prod Code</i>	<i>Total Samples</i>	<i>Samples in Violation</i>	<i>%</i>	<i>Test Violation Total</i>	<i>Total Volume (Gals)</i>	<i>Total in Violation</i>
	DFE	1	0	0.00	0	1,076,996.00	0
	G	620	80	12.90	112	21,233,374.10	283,040
	JF	5	0	0.00	0	697,397.00	0
	K	2	0	0.00	0	818.00	0
	Total:	713	84	11.78	116	39,486,010.10	332,996
Smith							
	D	4	1	25.00	1	12,332.00	2,416
	G	23	0	0.00	0	48,396.00	0
	K	3	0	0.00	0	2,584.00	0
	Total:	30	1	3.33	1	63,312.00	2,416
Stewart							
	D	11	0	0.00	0	12,613.00	0
	G	25	0	0.00	0	34,949.00	0
	K	4	0	0.00	0	1,253.00	0
	Total:	40	0	0.00	0	48,815.00	0
Sullivan							
	AG	1	0	0.00	0	8,726.00	0
	D	33	2	6.06	2	115,696.00	7,659
	G	103	3	2.91	3	363,697.00	5,246
	JF	1	0	0.00	0	47,118.00	0
	K	12	0	0.00	0	11,831.00	0
	Total:	150	5	3.33	5	547,068.00	12,905
Sumner							
	AG	2	0	0.00	0	5,275.00	0

Tennessee Department of Agriculture County Summary Short Report

PULL DATE ranges from 7/1/2007 TO 6/30/2008

Today: 08/14/2008

<i>County</i>	<i>Prod Code</i>	<i>Total Samples</i>	<i>Samples in Violation</i>	<i>%</i>	<i>Test Violation Total</i>	<i>Total Volume (Gals)</i>	<i>Total in Violation</i>
	BDB	1	0	0.00	0	520.00	0
	D	41	3	7.32	3	77,978.00	1,860
	G	133	9	6.77	16	393,365.00	42,815
	JF	2	0	0.00	0	9,187.00	0
	K	31	1	3.23	1	33,109.00	375
	Total:	210	13	6.19	20	519,434.00	45,050
Tipton	BD	2	1	50.00	2	2,725.00	800
	BDB	2	0	0.00	0	12,433.00	0
	D	18	0	0.00	0	115,315.00	0
	G	54	0	0.00	0	162,938.00	0
	K	2	0	0.00	0	1,279.00	0
	Total:	78	1	1.28	2	294,690.00	800
Trousdale	D	1	0	0.00	0	0.00	0
	G	9	0	0.00	0	28,932.00	0
	K	1	0	0.00	0	958.00	0
	Total:	11	0	0.00	0	29,890.00	0
Unicoi	D	4	0	0.00	0	12,727.00	0
	G	17	0	0.00	0	47,157.00	0
	K	2	0	0.00	0	1,150.00	0
	Total:	23	0	0.00	0	61,034.00	0

Tennessee Department of Agriculture County Summary Short Report

PULL DATE ranges from 7/1/2007 TO 6/30/2008

Today: 08/14/2008

<i>County</i>	<i>Prod Code</i>	<i>Total Samples</i>	<i>Samples in Violation</i>	<i>%</i>	<i>Test Violation Total</i>	<i>Total Volume (Gals)</i>	<i>Total in Violation</i>
Union							
	D	9	0	0.00	0	18,188.00	0
	G	18	1	5.56	1	78,911.00	3,351
	K	1	0	0.00	0	517.00	0
	Total:	28	1	3.57	1	97,616.00	3,351
Van Buren							
	D	5	0	0.00	0	5,852.00	0
	G	9	0	0.00	0	17,279.00	0
	K	1	0	0.00	0	452.00	0
	Total:	15	0	0.00	0	23,583.00	0
Warren							
	BDB	1	1	100.00	2	2,082.00	2,082
	D	18	1	5.56	1	133,895.00	2,136
	G	54	1	1.85	2	131,496.00	4,703
	K	6	0	0.00	0	13,385.00	0
	Total:	79	3	3.80	5	280,858.00	8,921
Washington							
	D	30	1	3.33	1	128,542.00	5,724
	E85	1	0	0.00	0	3,954.00	0
	G	89	3	3.37	3	367,773.00	3,147
	K	7	0	0.00	0	5,778.00	0
	Total:	127	4	3.15	4	506,047.00	8,871
Wayne							
	D	12	0	0.00	0	33,588.00	0
	G	26	0	0.00	0	43,827.00	0

Tennessee Department of Agriculture County Summary Short Report

PULL DATE ranges from 7/1/2007 TO 6/30/2008

Today: 08/14/2008

<i>County</i>	<i>Prod Code</i>	<i>Total Samples</i>	<i>Samples in Violation</i>	<i>%</i>	<i>Test Violation Total</i>	<i>Total Volume (Gals)</i>	<i>Total in Violation</i>
	K	1	0	0.00	0	249.00	0
	Total:	39	0	0.00	0	77,664.00	0
Weakley	BD	1	1	100.00	2	886.00	886
	D	15	0	0.00	0	20,226.00	0
	G	31	1	3.23	2	75,006.00	5,925
	Total:	47	2	4.26	4	96,118.00	6,811
White	D	14	0	0.00	0	45,280.00	0
	G	36	1	2.78	1	92,105.00	1,833
	K	1	0	0.00	0	765.00	0
	Total:	51	1	1.96	1	138,150.00	1,833
Williamson	BDB	1	0	0.00	0	1,673.00	0
	D	34	0	0.00	0	138,003.00	0
	G	90	4	4.44	7	394,881.00	5,560
	K	10	0	0.00	0	9,939.00	0
	Total:	135	4	2.96	7	544,496.00	5,560
Wilson	AG	1	0	0.00	0	7,159.00	0
	BDB	3	1	33.33	1	7,464.00	1,560
	D	20	1	5.00	1	122,164.00	603
	E85	4	0	0.00	0	4,751.00	0
	G	103	8	7.77	13	397,917.00	55,259

Tennessee Department of Agriculture County Summary Short Report

PULL DATE ranges from 7/1/2007 TO 6/30/2008

Today: 08/14/2008

<i>County</i>	<i>Prod Code</i>	<i>Total Samples</i>	<i>Samples in Violation</i>	<i>%</i>	<i>Test Violation Total</i>	<i>Total Volume (Gals)</i>	<i>Total in Violation</i>
	JF	1	0	0.00	0	1,708.00	0
	K	20	2	10.00	2	11,712.00	283
	Total:	152	12	7.89	17	552,875.00	57,705

Kerosene and Motor Fuel Enforcement Summary

July 1, 2007 – June 30, 2008

Civil Penalties:

Total Penalties Issued:	109
Amount Issued:	\$72,934
Total Collections:	\$63,302

Product Stop Sales:

Total Stop-Sales:	278
Total Gallons Stop-Sold:	853,660

Administrative Hearings

There was one (1) administrative hearing held in FY '07. The ruling of the Administrative Law Judge was in favor of the TN Department of Agriculture.