

Tennessee Traffic Fatality Rate 1950-2009

Year	Traffic Fatalities	Annual VMT	Fatality Rate
1950	747	90.25	8.28
1951	809	96.48	8.39
1952	813	104.52	7.78
1953	849	110.39	7.69
1954	740	110.03	6.73
1955	906	115.81	7.82
1956	766	119.49	6.41
1957	699	131.65	5.31
1958	720	135.62	5.31
1959	773	147.41	5.24
1960	787	149.89	5.25
1961	742	154.89	4.79
1962	811	163.06	4.97
1963	941	154.93	6.07
1964	1,060	165.51	6.40
1965	1,077	172.97	6.23
1966	1,258	185.39	6.79
1967	1,250	199.73	6.26
1968	1,192	207.94	5.73
1969	1,348	225.59	5.98
1970	1,377	210.56	6.54
1971	1,373	234.26	5.86
1972	1,431	264.90	5.40
1973	1,444	285.70	5.05
1974	1,258	282.55	4.45
1975	1,162	288.89	4.02
1976	1,172	314.33	3.73
1977	1,244	324.12	3.84
1978	1,270	340.20	3.73
1979	1,268	333.80	3.80

Year	Traffic Fatalities	Annual VMT	Fatality Rate
1980	1,171	354.00	3.31
1981	1,119	342.80	3.26
1982	1,074	350.54	3.06
1983	1,046	349.75	2.99
1984	1,111	362.30	3.07
1985	1,101	362.78	3.03
1986	1,230	395.21	3.11
1987	1,247	421.56	2.96
1988	1,266	440.74	2.87
1989	1,088	456.39	2.38
1990	1,177	467.10	2.52
1991	1,113	472.67	2.35
1992	1,153	498.57	2.31
1993	1,170	521.14	2.25
1994	1,214	545.22	2.23
1995	1,259	562.13	2.24
1996	1,239	582.76	2.13
1997	1,225	605.39	2.02
1998	1,216	628.29	1.94
1999	1,302	652.21	2.00
2000	1,307	658.72	1.98
2001	1,251	676.06	1.85
2002	1,177	683.16	1.72
2003	1,193	689.36	1.73
2004	1,339	708.60	1.89
2005	1,270	707.04	1.80
2006	1,284	707.08	1.82
2007	1,211	712.50	1.70
2008	1,043	696.61	1.50
2009	989	702.89	1.41

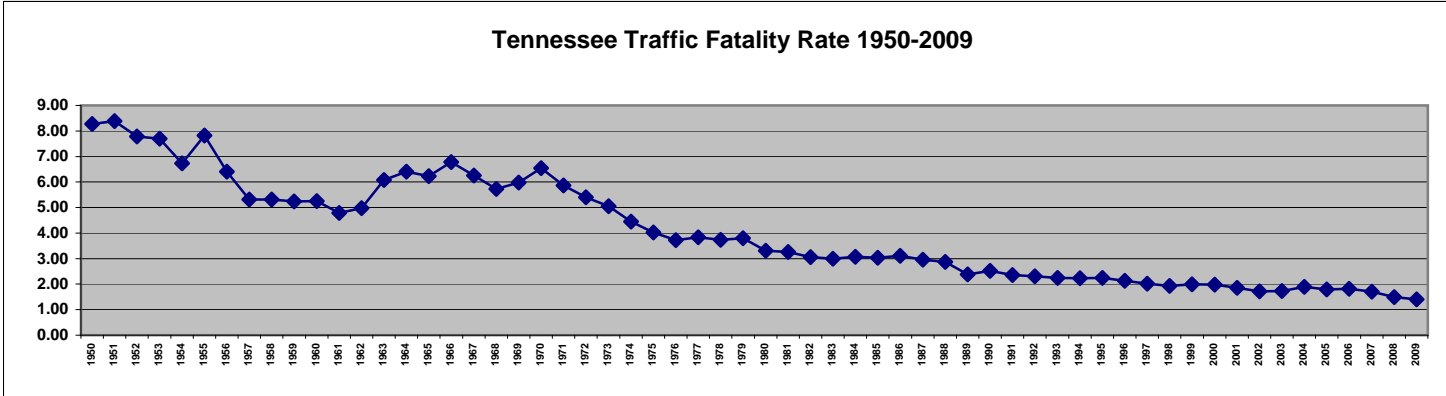
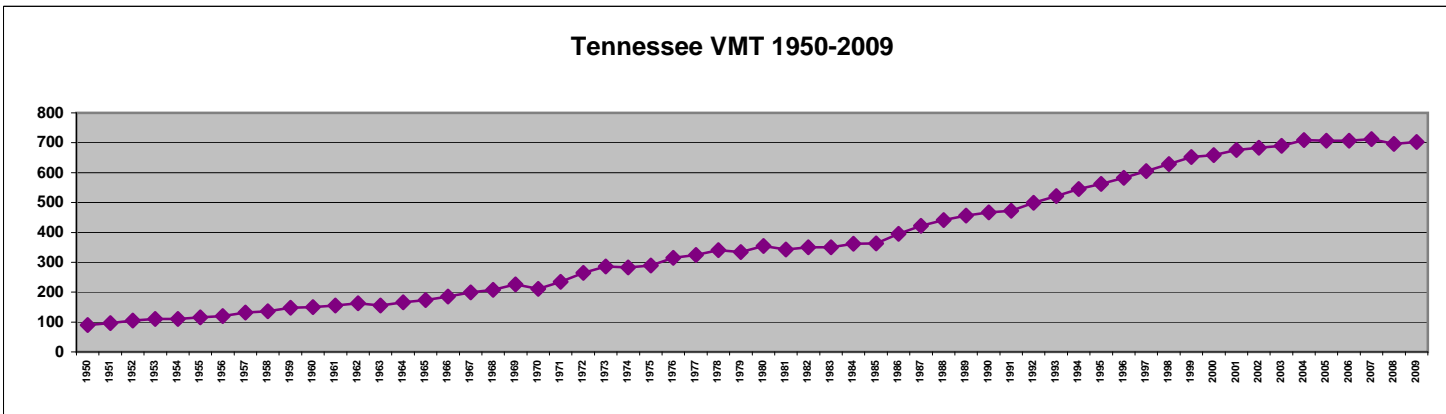
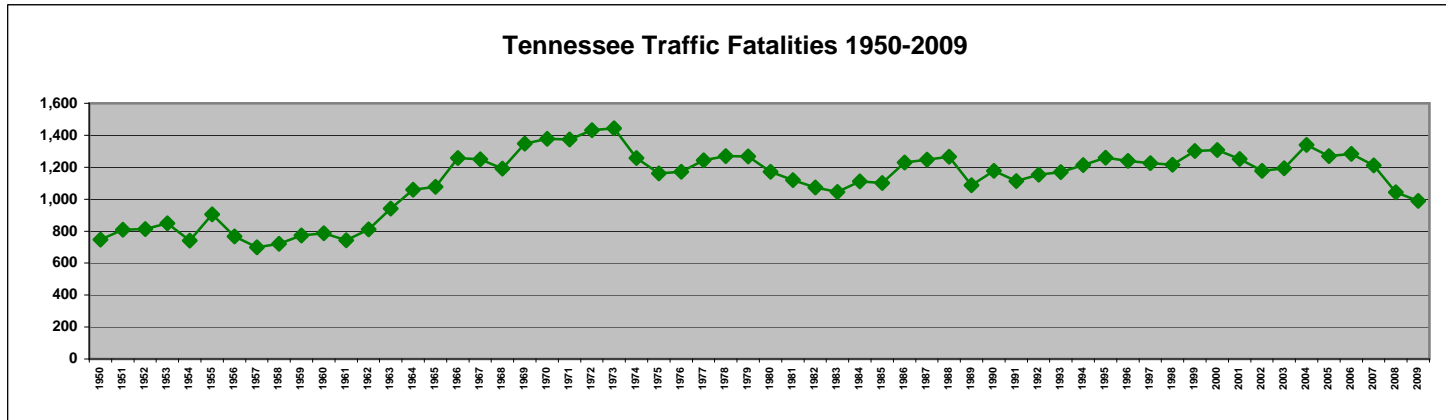
Source: Tennessee Department of Safety, Office of Research, Statistics, and Analysis, 6/4/2010.

*2008-2009 fatality figures are preliminary.

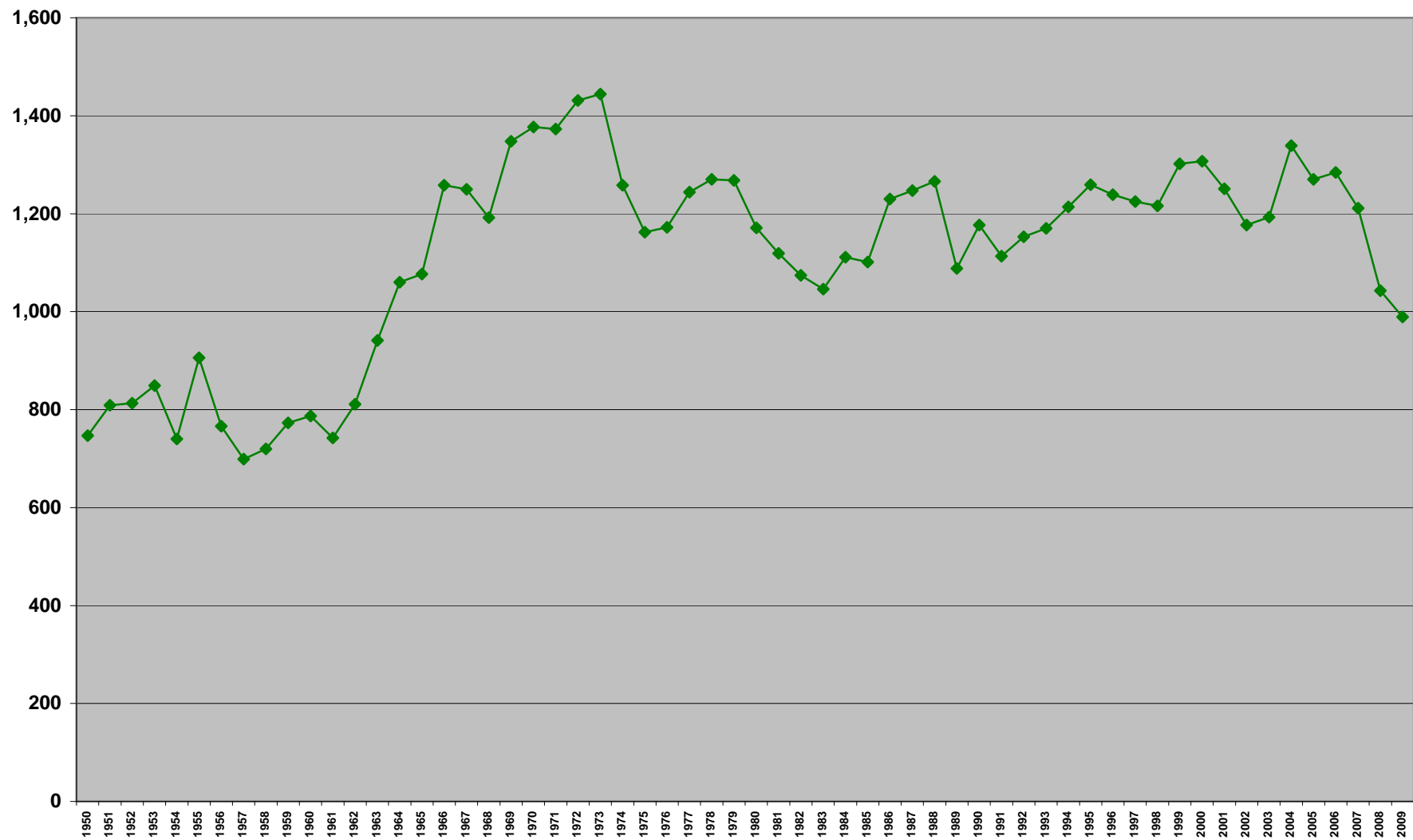
**VMT = In 100 million vehicle miles traveled. Figure published by Tennessee Department of Transportation.

***Fatality Rate = (Total Fatalities/VMT), Per 100 Million VMT

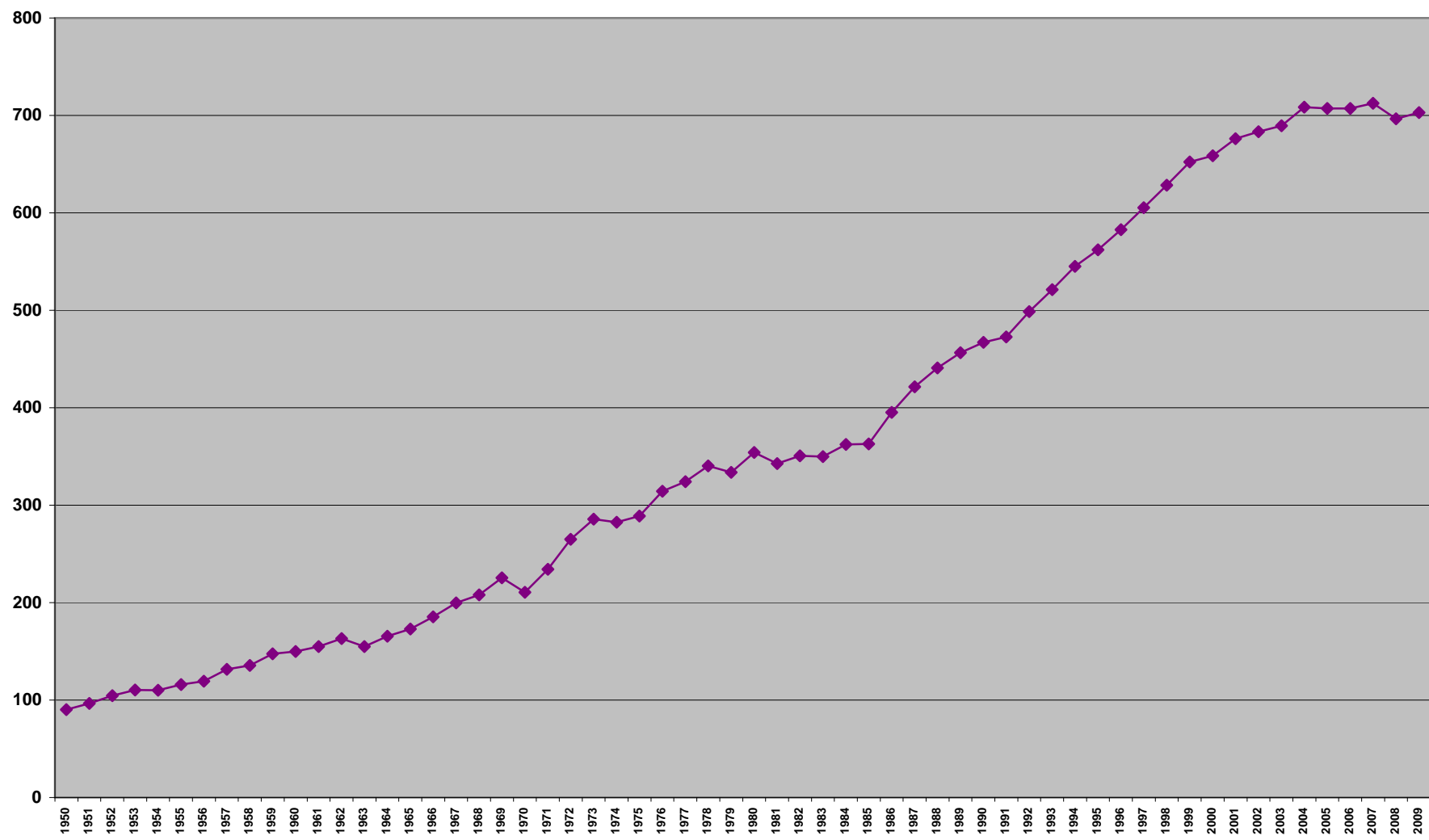
Tennessee Traffic Fatality Rate 1950-2009



Tennessee Traffic Fatalities 1950-2009



Tennessee VMT 1950-2009



Tennessee Traffic Fatality Rate 1950-2009

