

FOR IMMEDIATE RELEASE: April 18, 2002

CONTACT: Milissa Reiersen
Information Officer
(615)741-2257 (O)
(615)599-3070 (H)

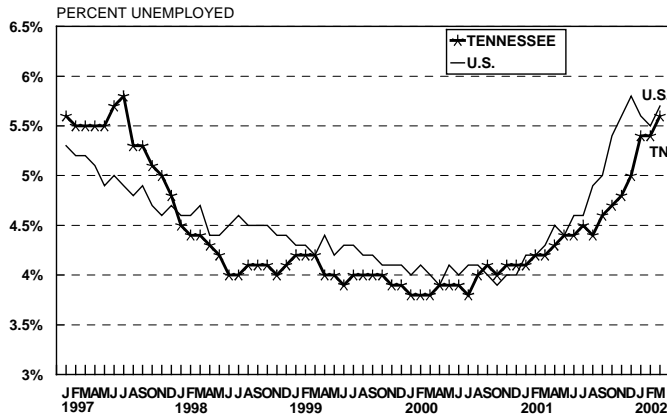
NASHVILLE—Tennessee’s unemployment rate for the month of March is 5.6 percent, up from 5.4 percent in February, Commissioner of Labor & Workforce Development Michael E. Magill announced today. The state rate remains below the March national rate of 5.7 percent.

“Tennessee’s employment picture was fairly typical of March,” Magill said. “Seasonal increases in retail trade, construction and services were partially offset by declines in manufacturing, transportation, and food stores.”

February to March figures showed employment increased in retail trade by 6,000 jobs due to increases in demand for building materials and garden supplies, as well as an increase in eating and drinking places. Services increased by 5,600, due to seasonal increases in hotels, business services, and amusement/recreational services. Construction jobs were also on the increase in March, up by 4,300 jobs. Transportation declined by 300 jobs. Manufacturing lost 700 jobs, due to declines in primary metals and chemicals. Federal government increased by 400, with increases due to the tax season.

From March 2001 to March 2002, services grew by 16,400; finance, insurance, and real estate increased by 1,400 jobs, and government jobs increased by 2,200. Major decreases took place in manufacturing, down by 19,800 jobs, with losses of 13,000 in durable goods and 6,800 in nondurable goods manufacturing. Transportation declined by 5,700, construction lost 2,200 jobs, and the durable goods sector of wholesale trade lost 2,800.

UNEMPLOYMENT RATES - U.S. & TENNESSEE
JANUARY 1997 - PRESENT
(seasonally adjusted)



LABOR FORCE ESTIMATES SUMMARY - TENNESSEE

March 2002 (preliminary) - BM2001

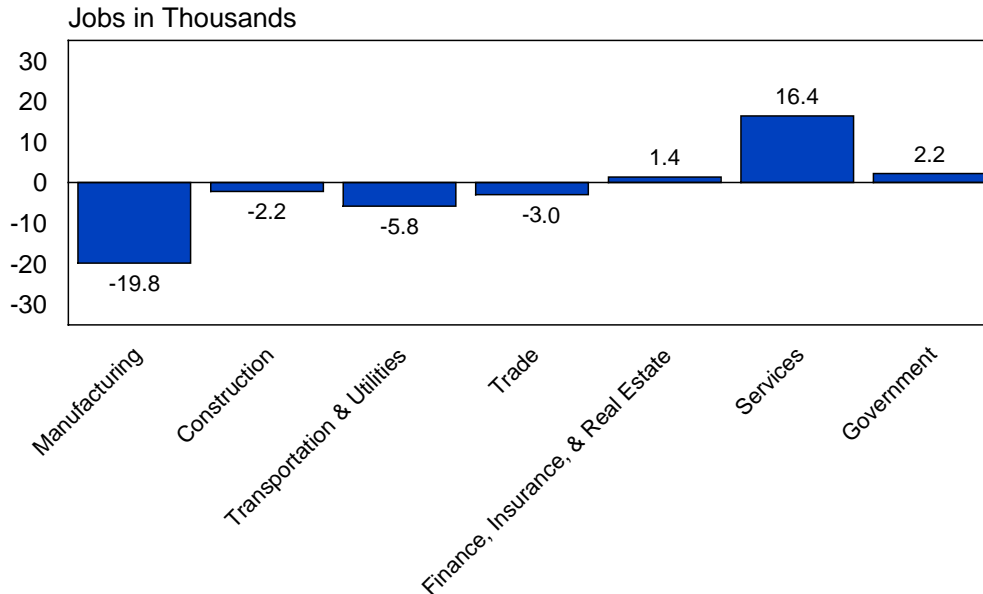
<i>Seasonally Adjusted</i>	Labor Force	Employment	Unemployment	Unemployment Rate		Rate
				Mar.	Feb.	Change
UNITED STATES	142,005,000	133,894,000	8,111,000	5.7 %	5.5 %	0.2 %
TENNESSEE	2,897,300	2,734,200	163,100	5.6	5.4	0.2

Not Seasonally Adjusted

UNITED STATES	142,092,000	133,433,000	8,659,000	6.1 %	6.1 %	0.0 %
TENNESSEE	2,881,600	2,718,000	163,600	5.7	5.7	0.0

OVER THE YEAR JOB CHANGES

By Major Industry (March 2001-2002)



County and MSA rates will be released on Thursday, April 25, 2002.

--30--

(02-050)

NOTE: Information will be available on the Internet; enter "http://www.state.tn.us/labor-wfd/labor_figures". Sound may be obtained from the Governor's NewsLine at 1-800-342-1483 or Nashville area 741-4877.

NOTE: Tennessee's employment and unemployment statistics are based on two major surveys. The Current Population Survey (CPS) is a survey by place of residence providing estimates on the number of people in the labor force, total employment, unemployment, and the unemployment rate. Beginning in January 1992, the CPS data are seasonally adjusted for all states as directed by the Bureau of Labor Statistics. The business survey collects data by place of work and creates information about jobs in various industries. The business survey data are non-seasonally adjusted at this time.

The Tennessee Department of Labor and Workforce Development is an equal opportunity employer. Auxiliary aids and services are available upon request to individuals with disabilities.

El Departamento del Trabajo y de la Fuerza Laboral es un organismo empresarial que aplica la igualdad de oportunidades. Los servicios y ayudas auxiliares están disponibles para los individuos con impedimentos si los solicitan.