

EXECUTIVE

Department of Human Services
Commissioner

Executive Administrative Assistant

Deputy Commissioner

Office of the General Counsel
General Counsel

Office of Inspector General
Inspector General

Communications
Director

Finance & Administration
Assistant Commissioner

Rehabilitation Services
Assistant Commissioner

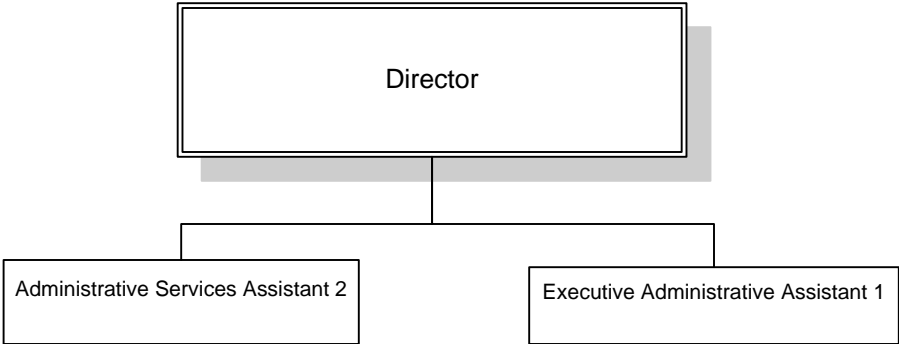
Child Support
Assistant Commissioner

Adult & Family Services
Assistant Commissioner

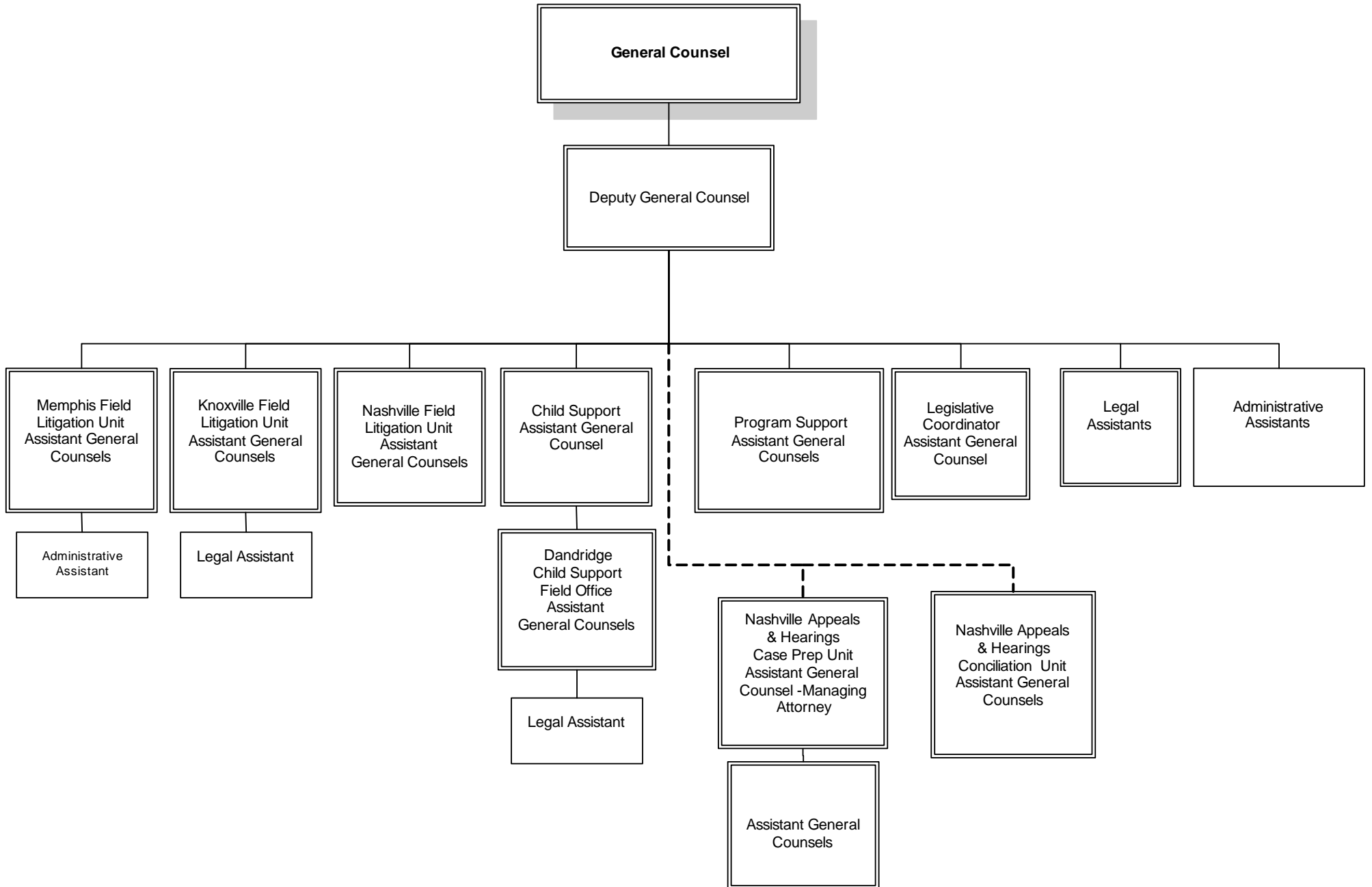
Appeals & Hearings
Assistant Commissioner

Organization & Performance Management
Assistant Commissioner

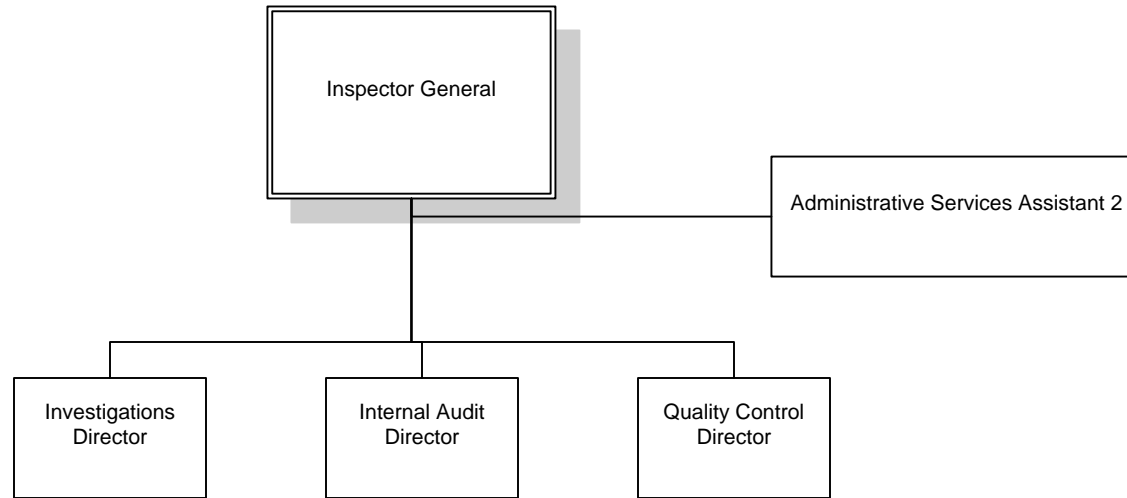
COMMUNICATIONS



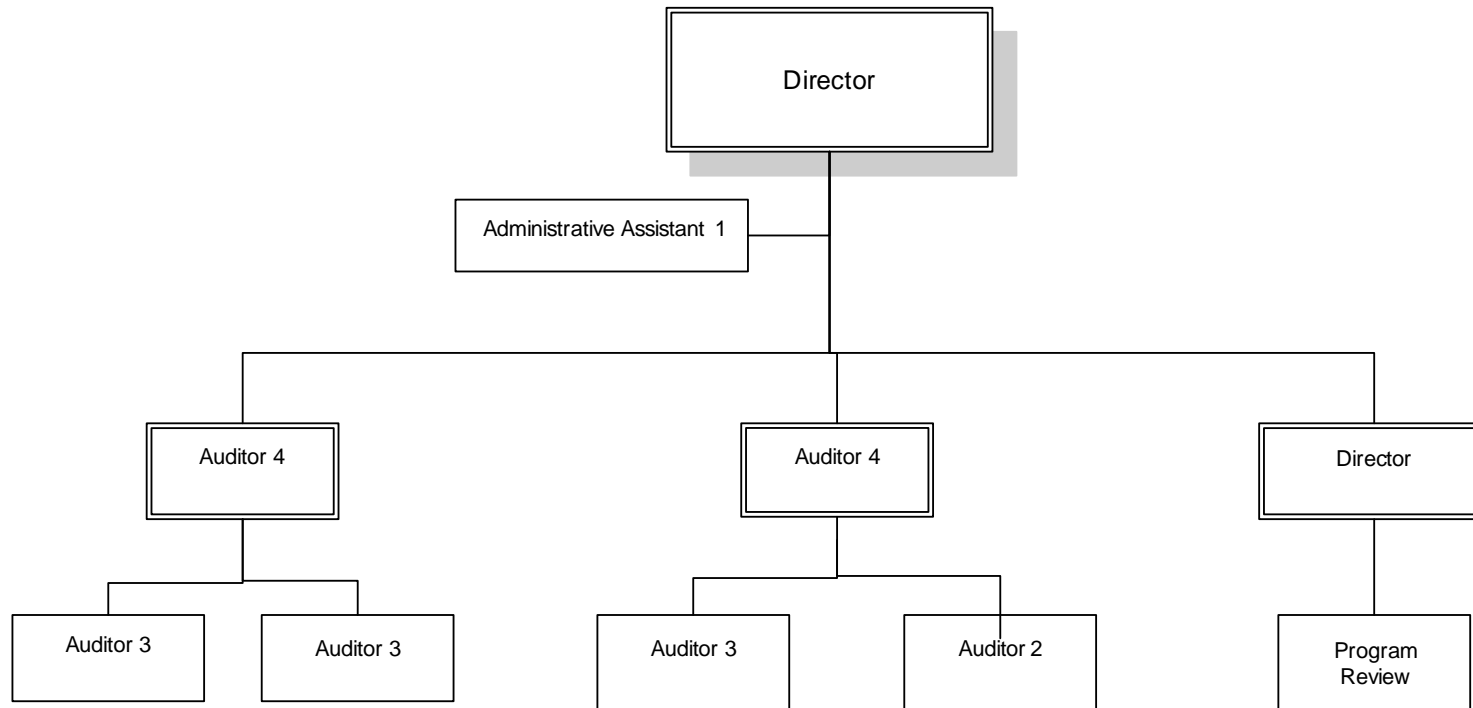
OFFICE OF GENERAL COUNSEL



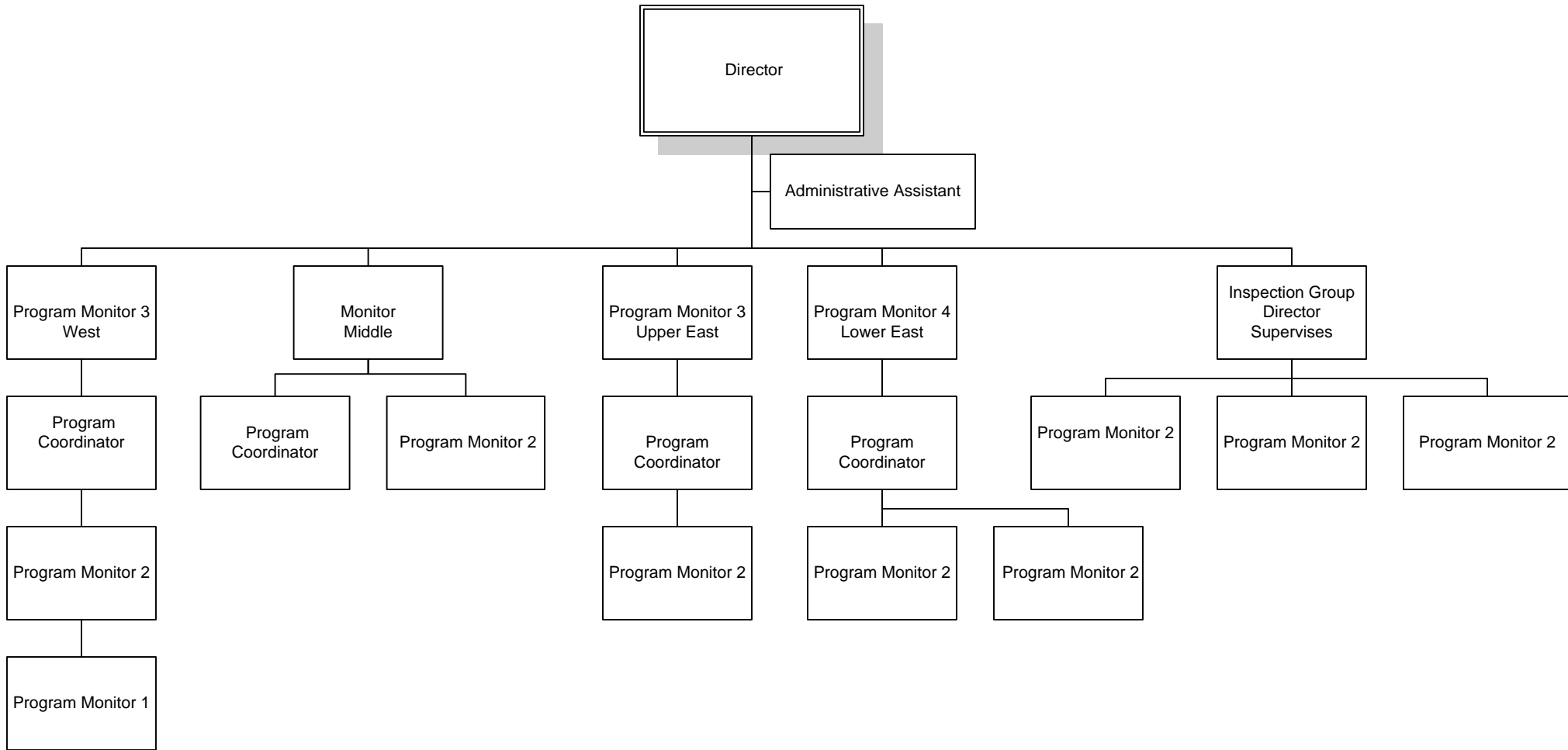
OFFICE OF INSPECTOR GENERAL



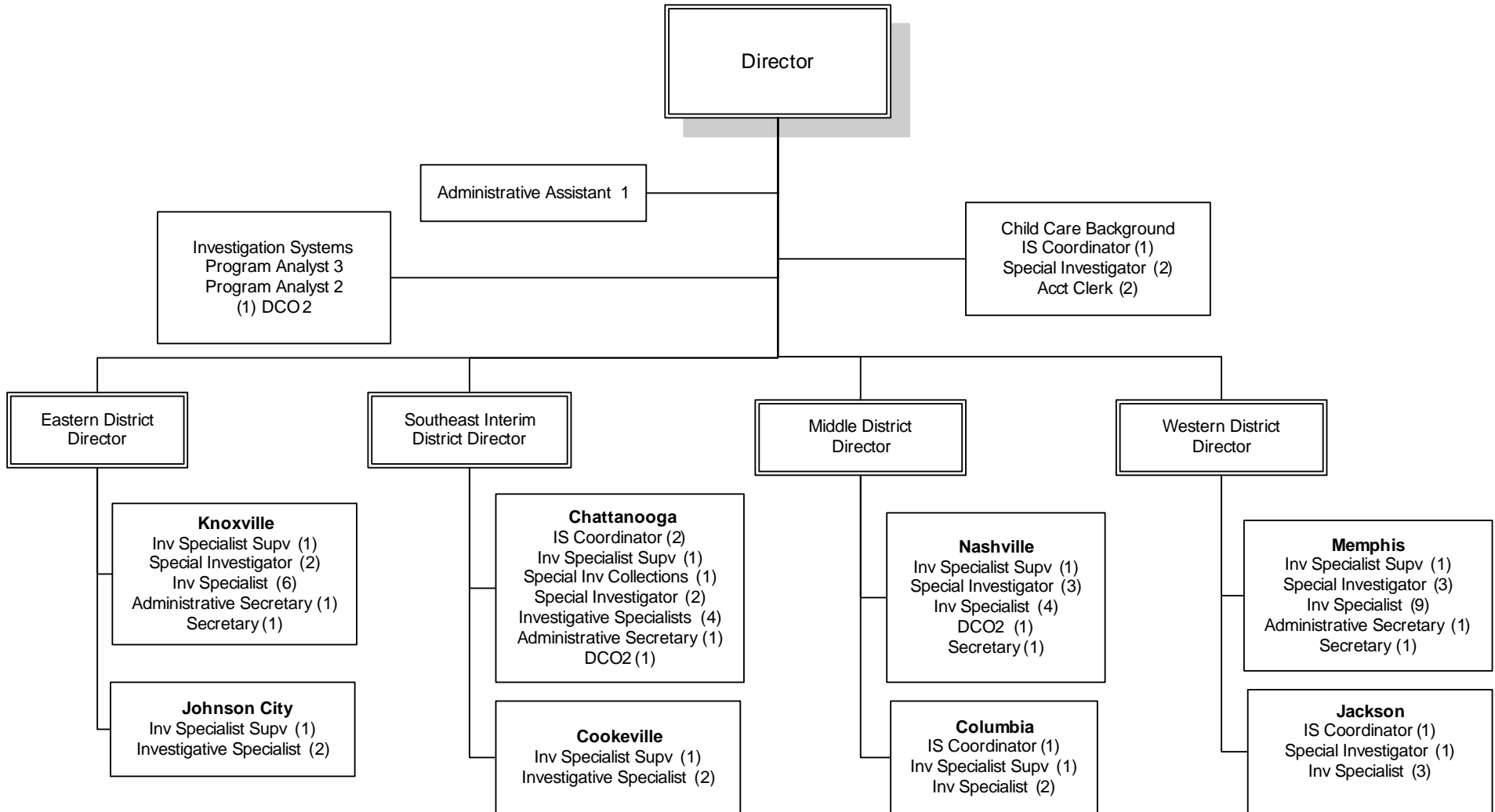
OFFICE OF INSPECTOR GENERAL/Internal Audit



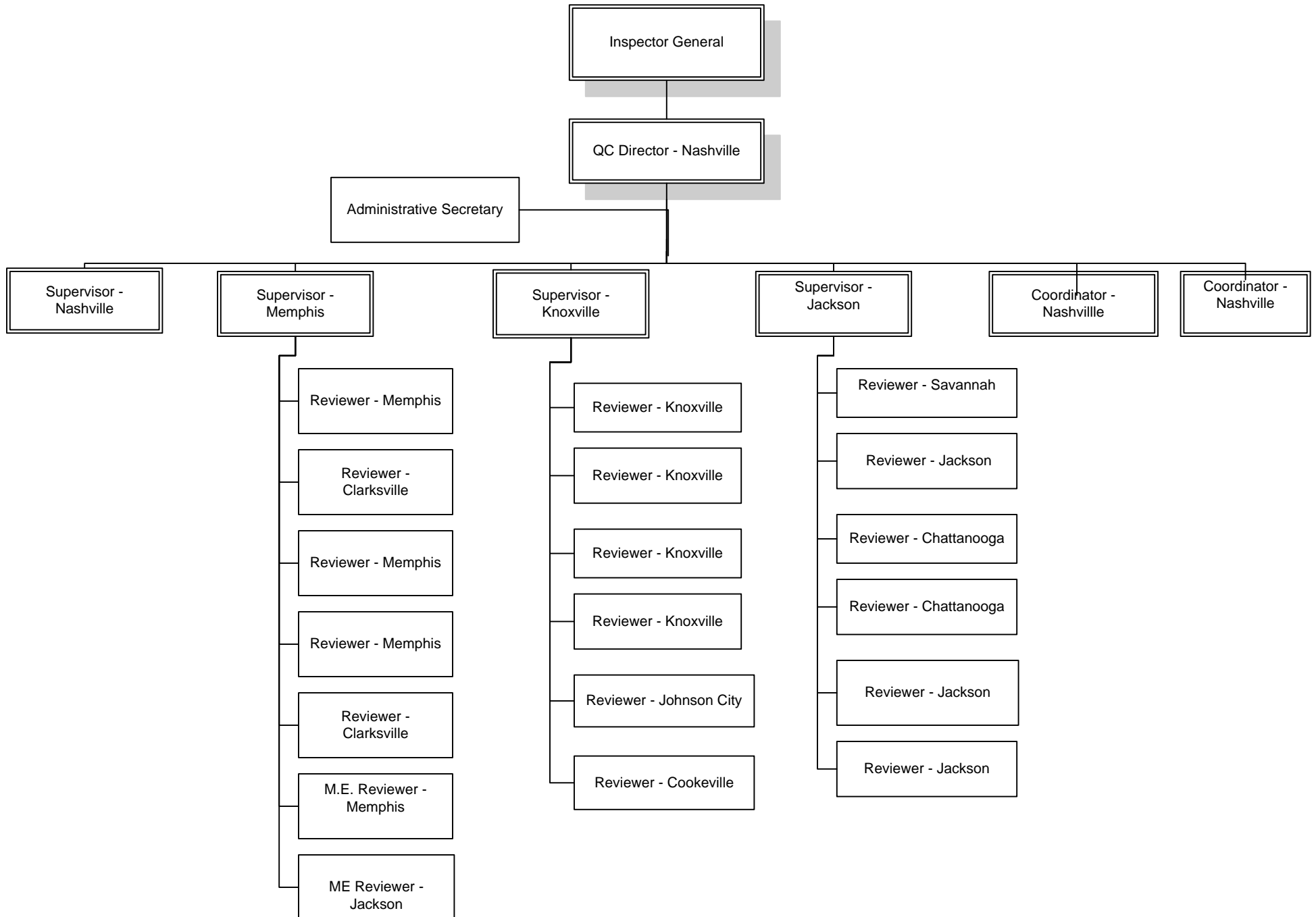
OIG/Internal Audit/Program Review



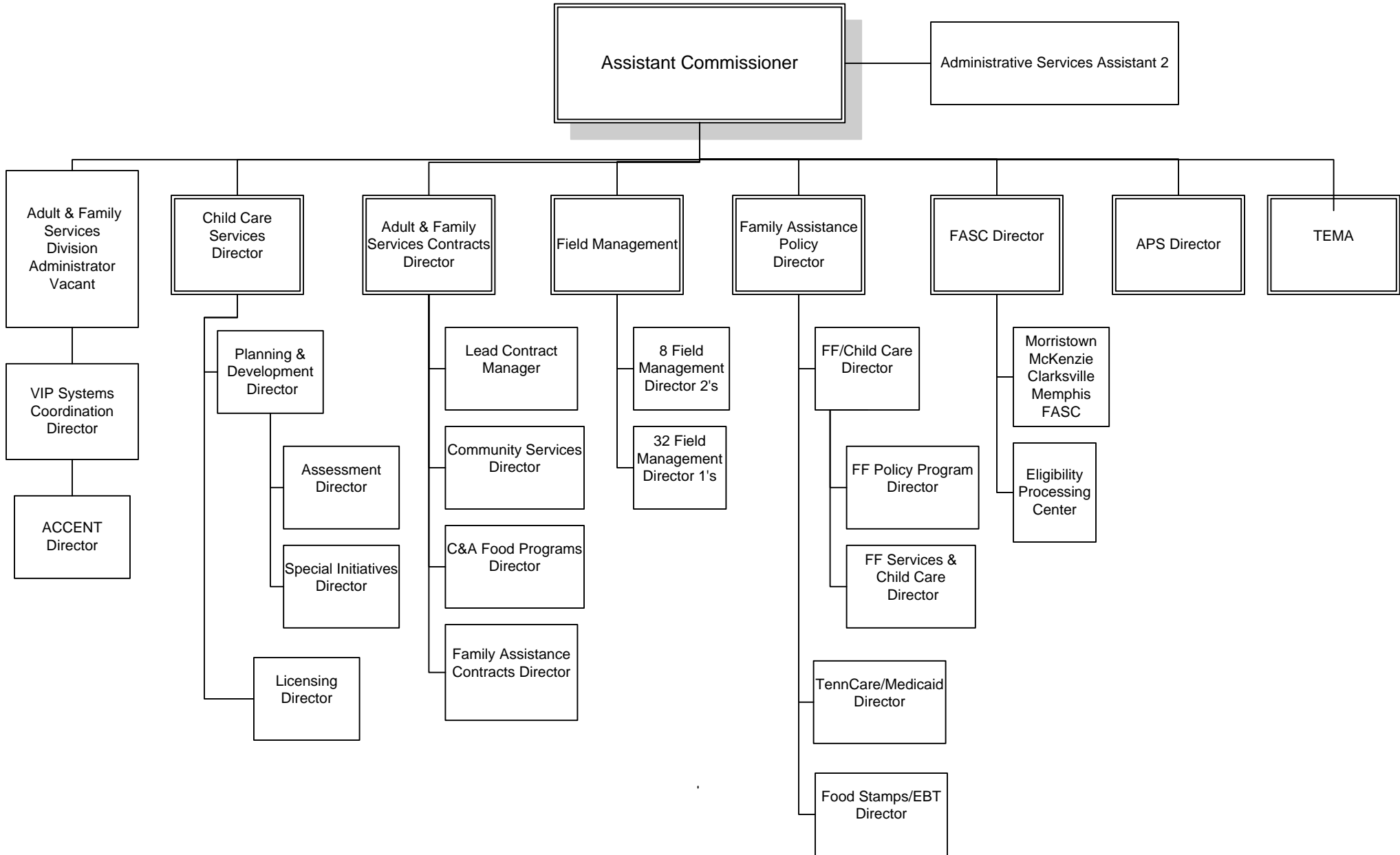
OFFICE OF INSPECTOR GENERAL/Investigations



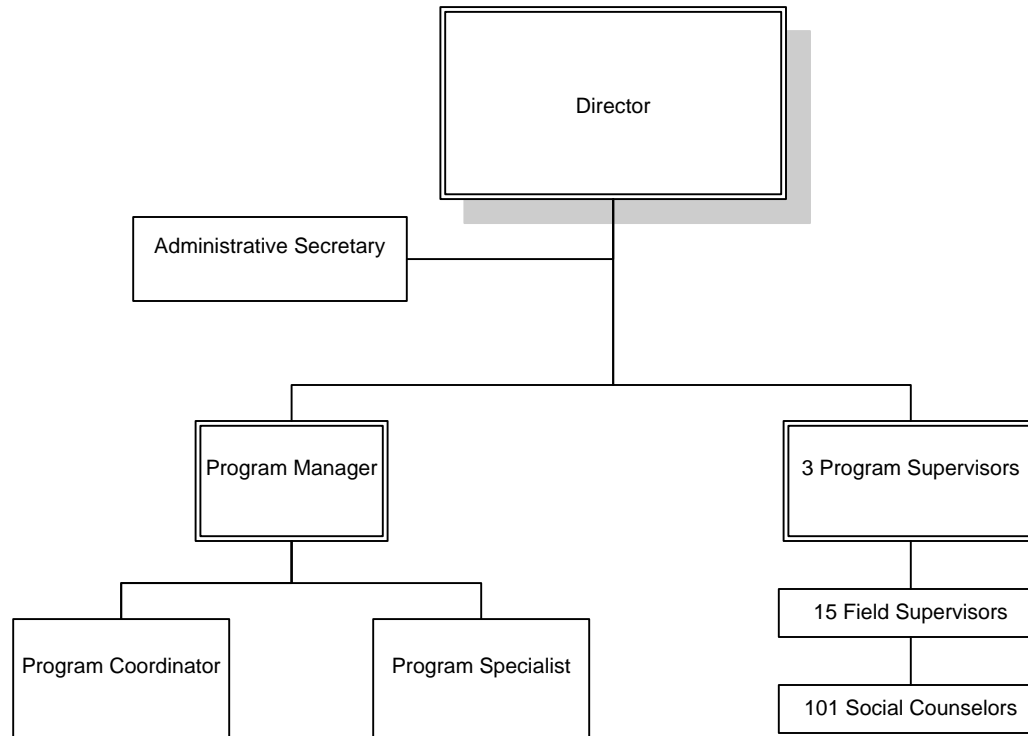
OFFICE OF INSPECTOR GENERAL/Quality Control



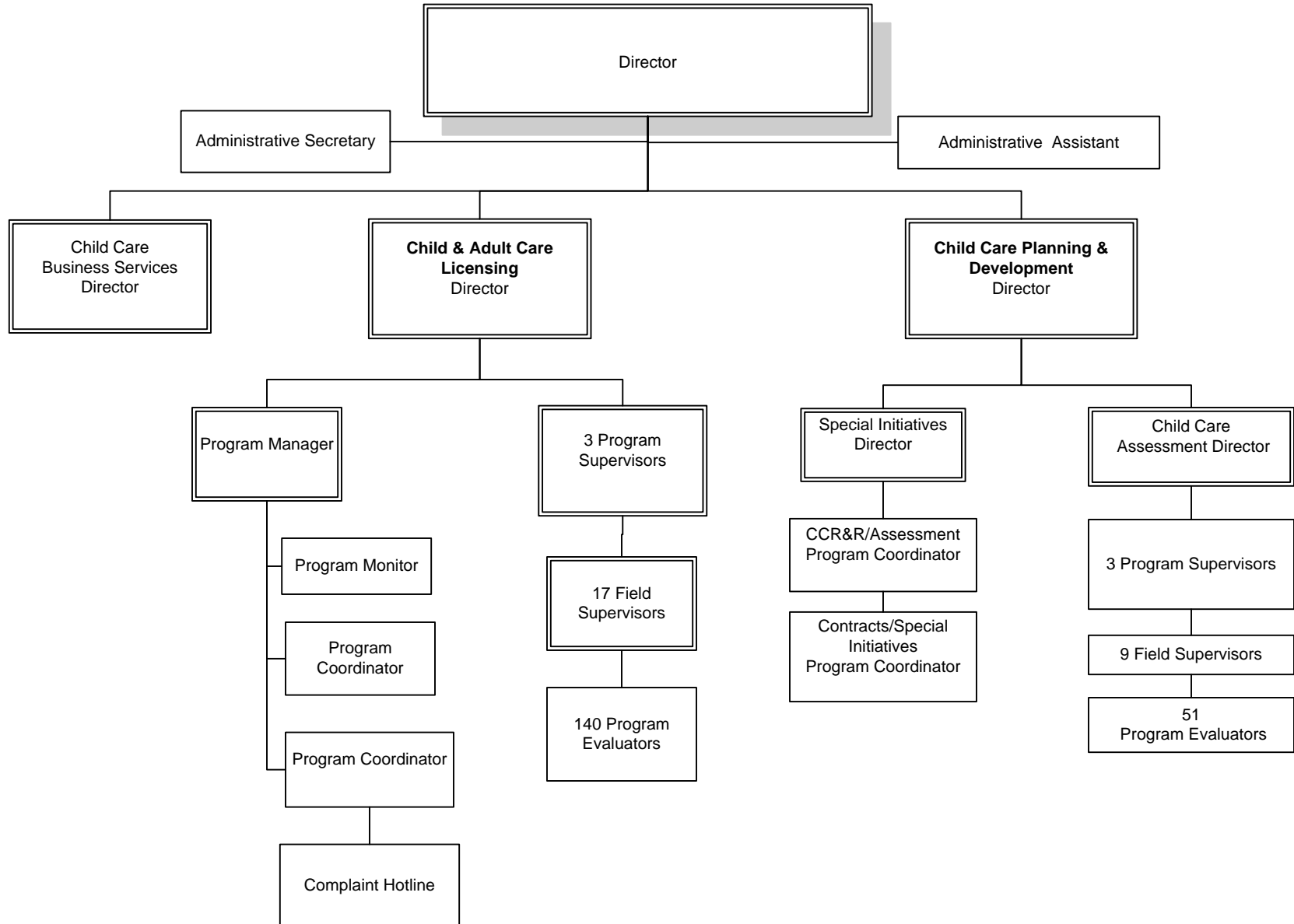
ADULT & FAMILY SERVICES



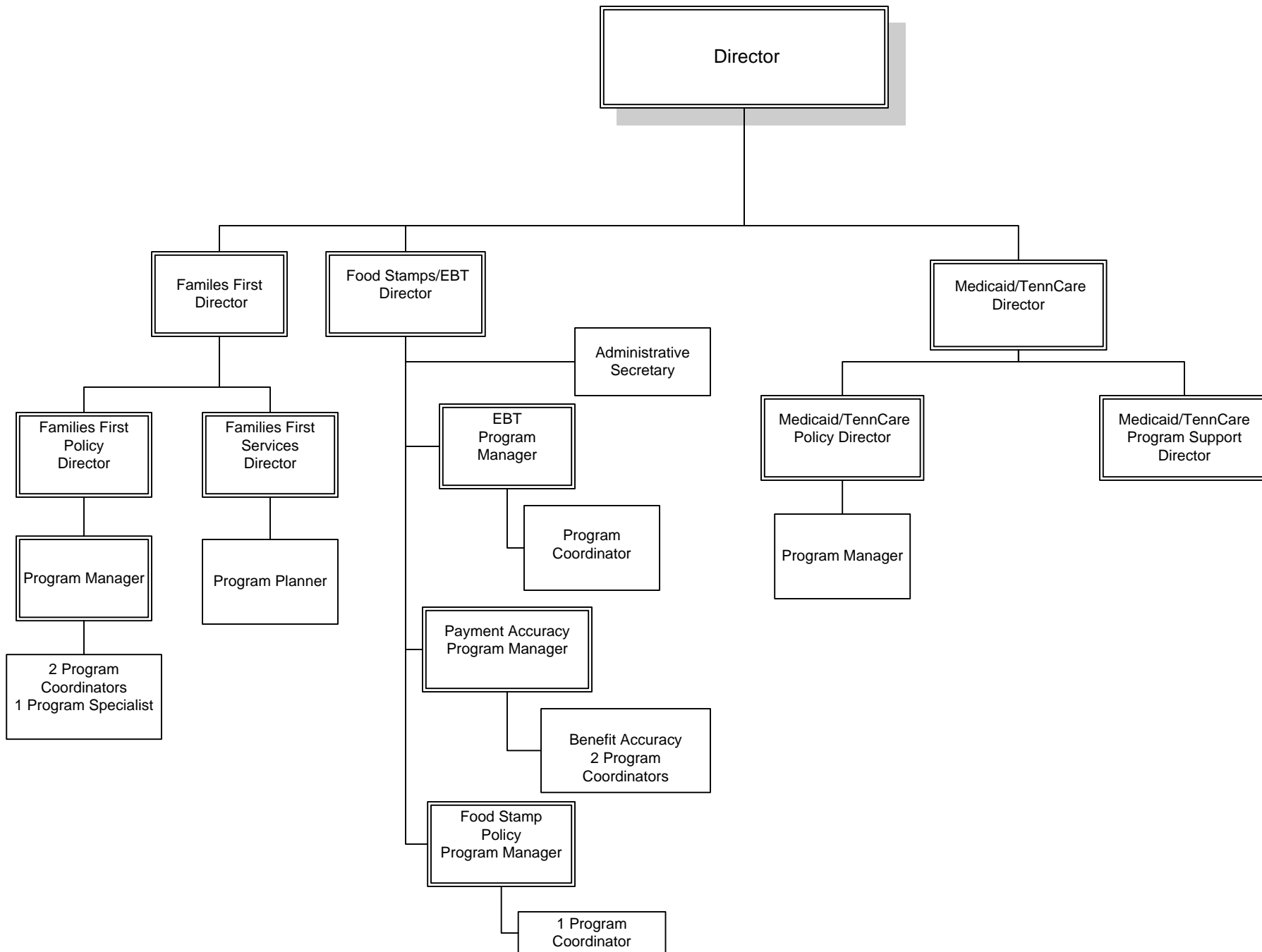
ADULT & FAMILY SERVICES /Adult Protective Services



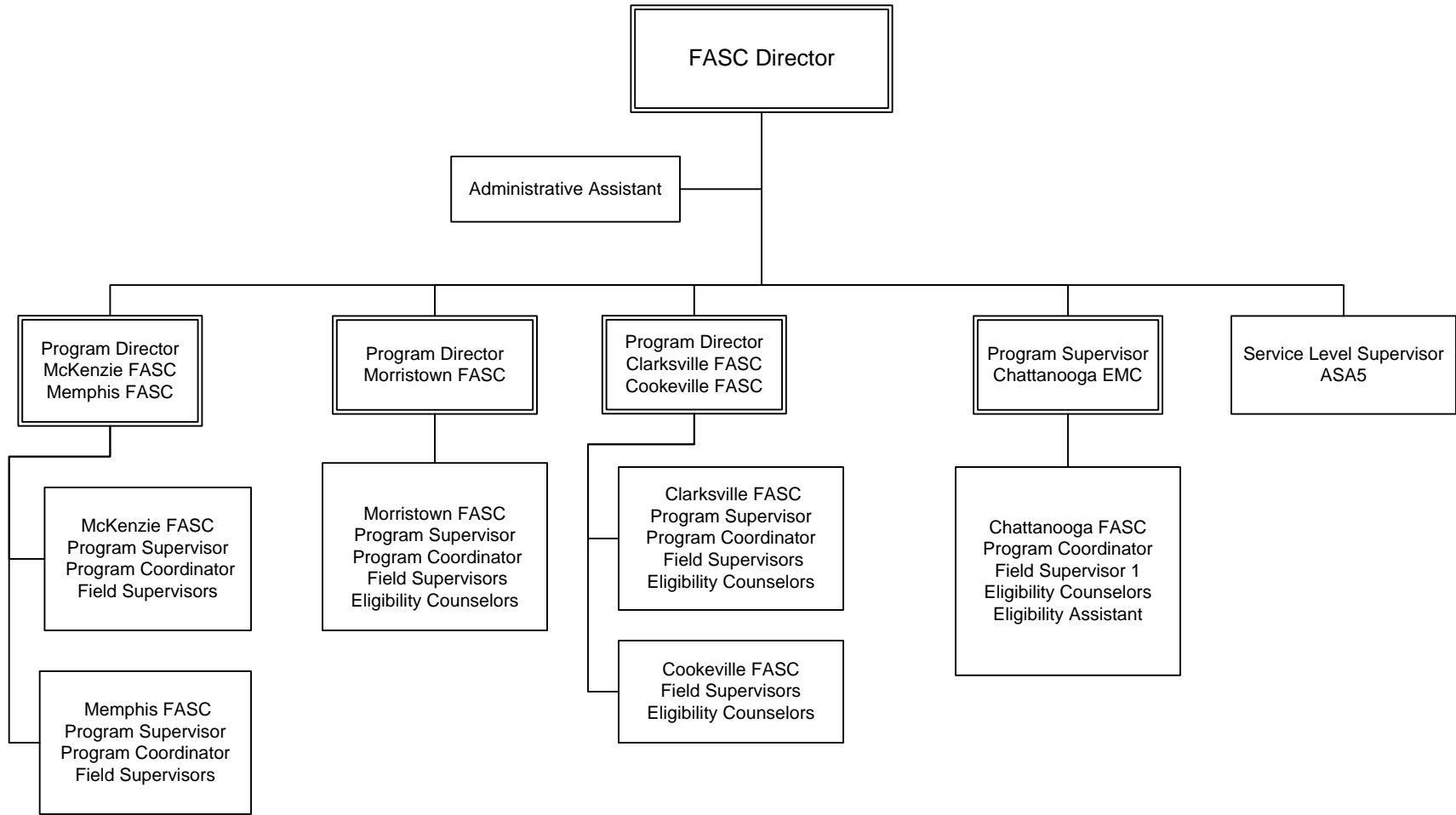
ADULT & FAMILY SERVICES/Child Care



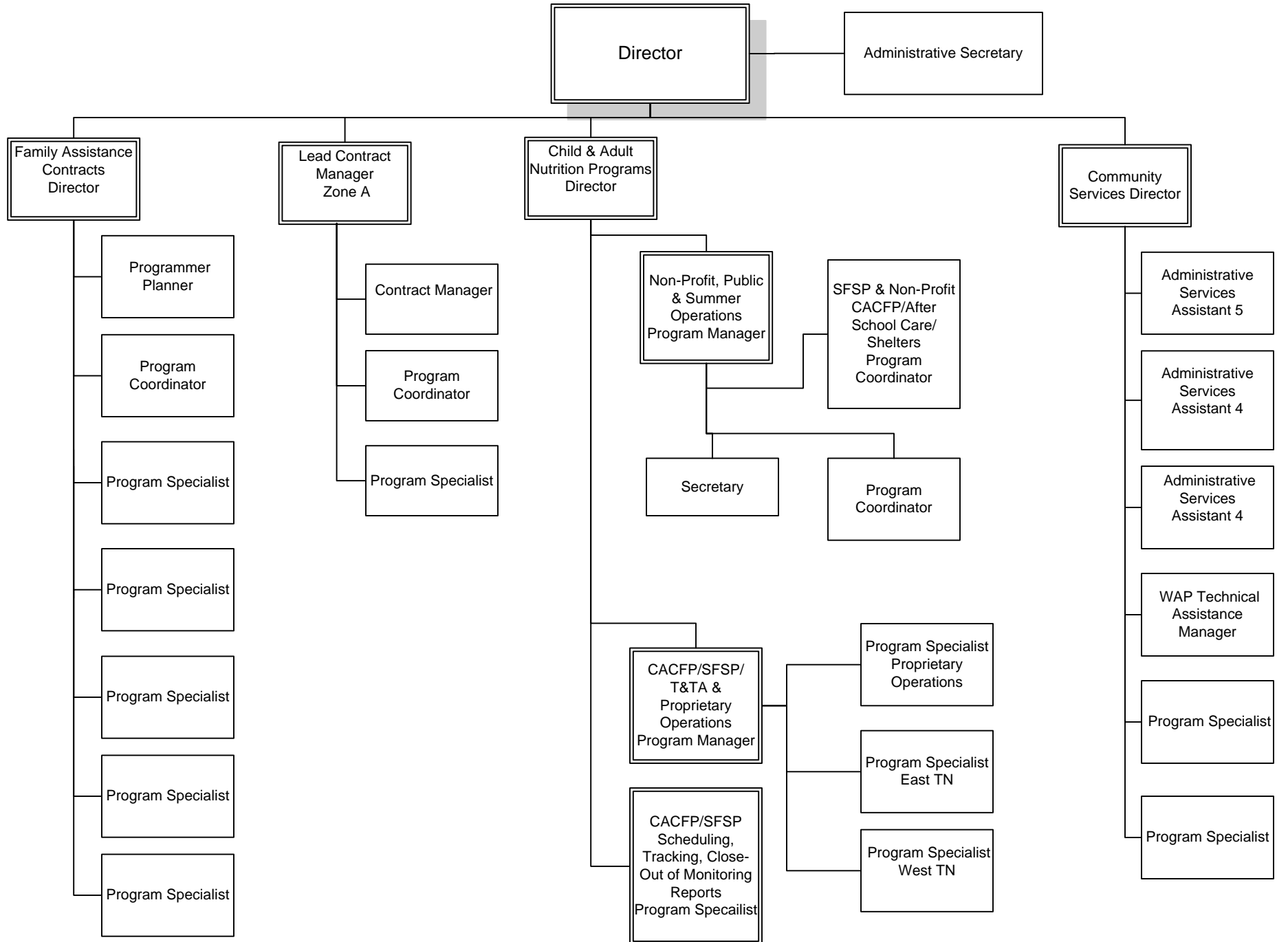
ADULT & FAMILY SERVICES / Family Assistance



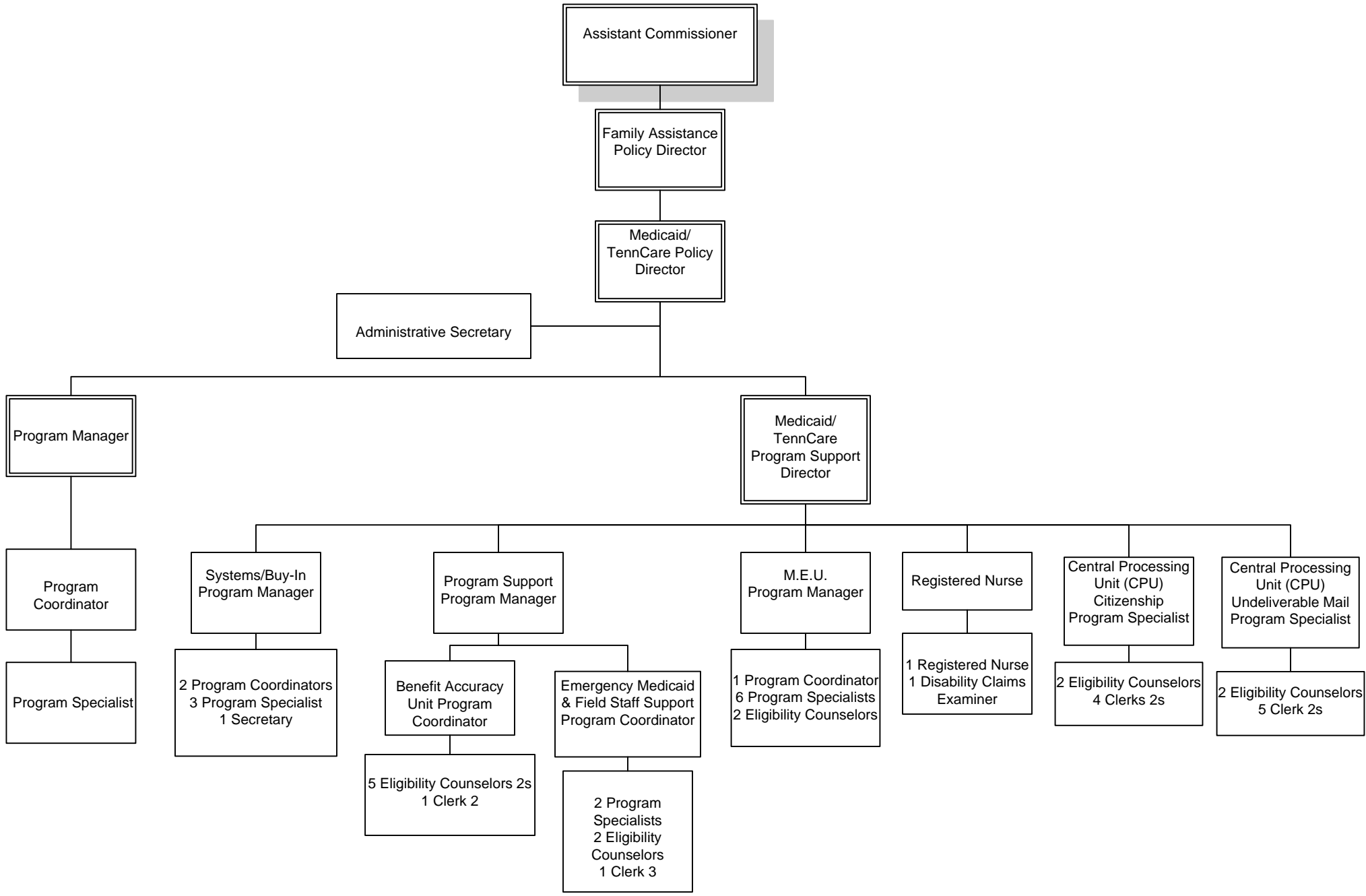
ADULT & FAMILY SERVICES / Family Assistance Service Center



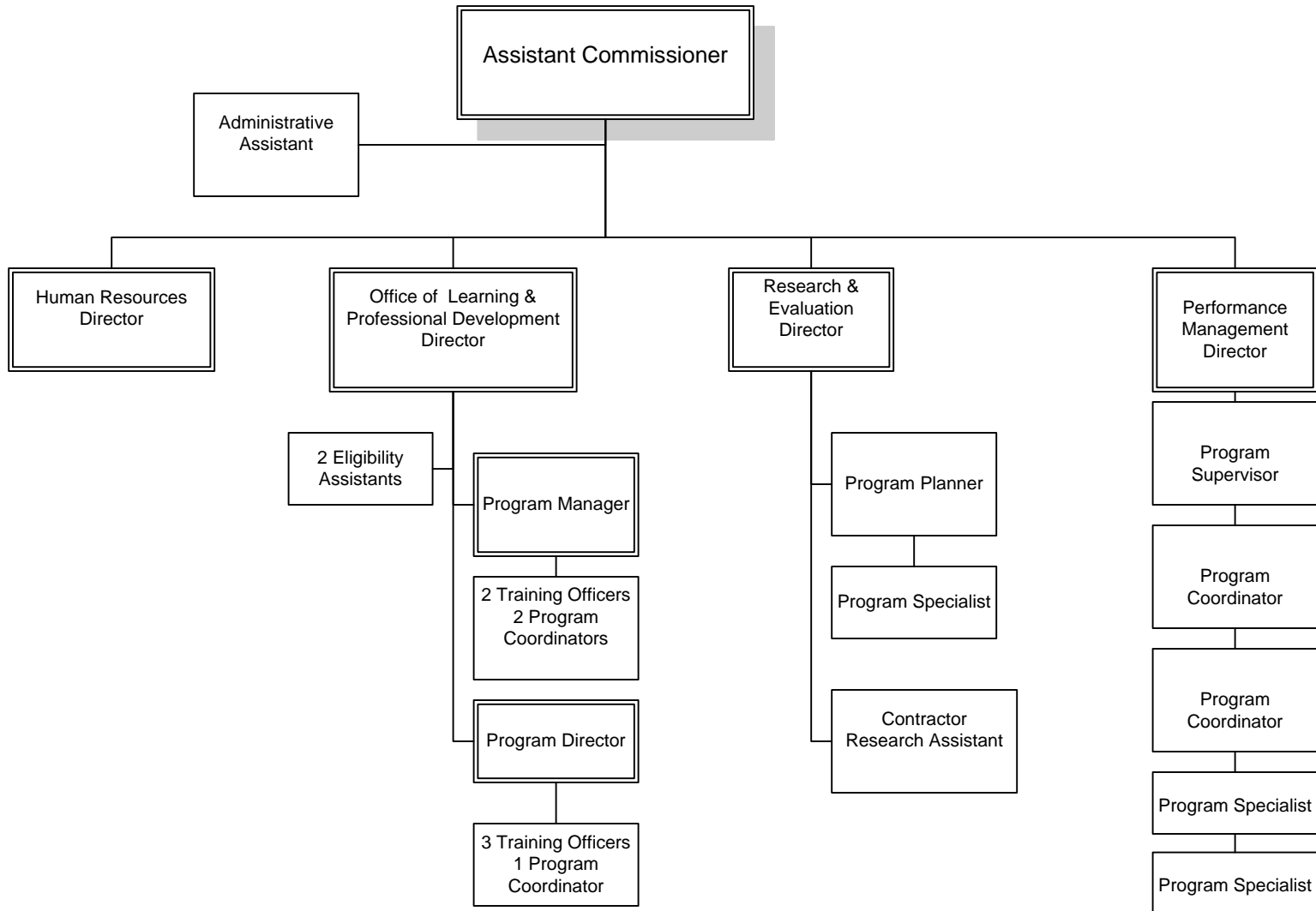
ADULT & FAMILY SERVICES/Contracts



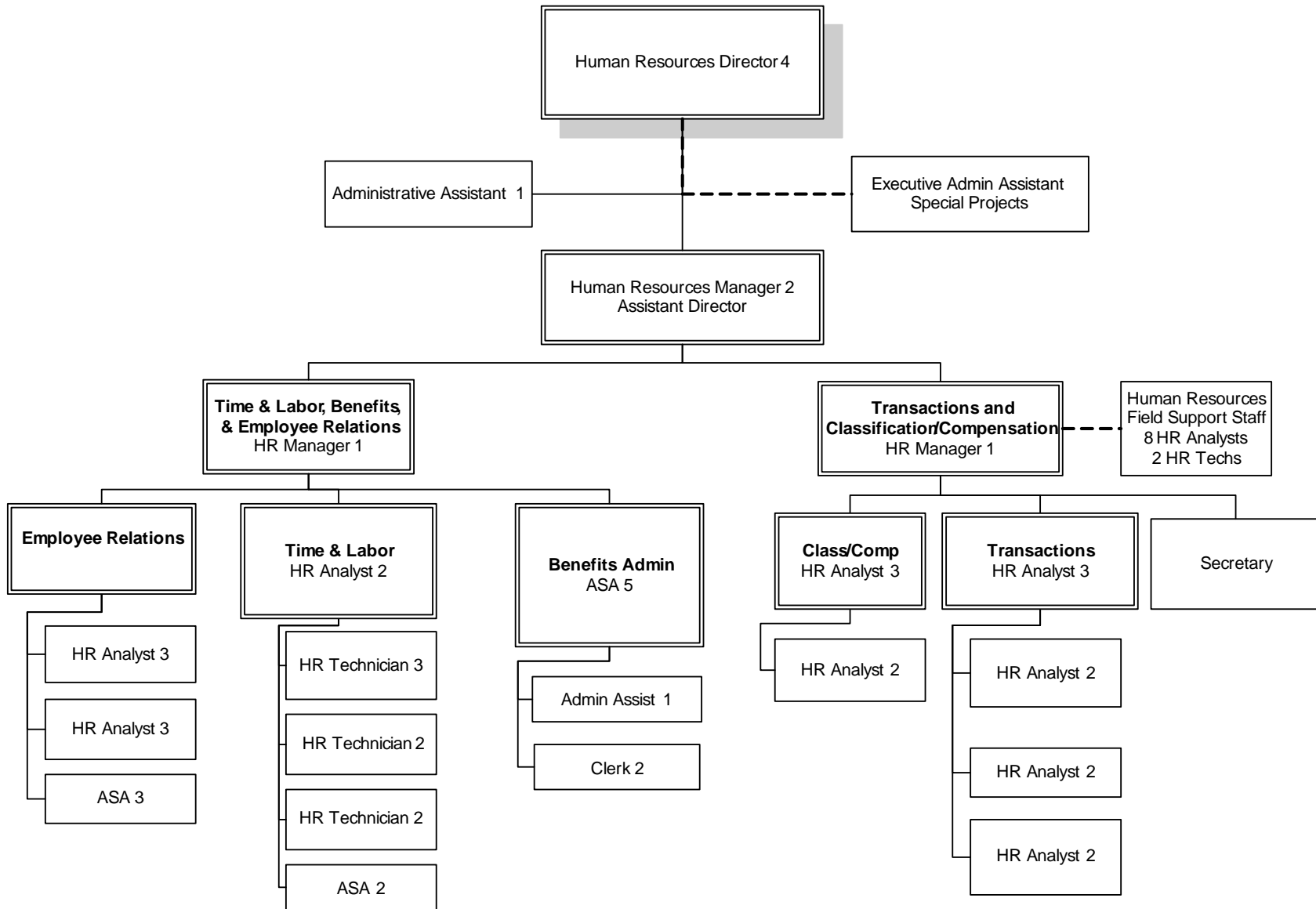
ADULT & FAMILY SERVICES / Medicaid/TennCare Eligibility



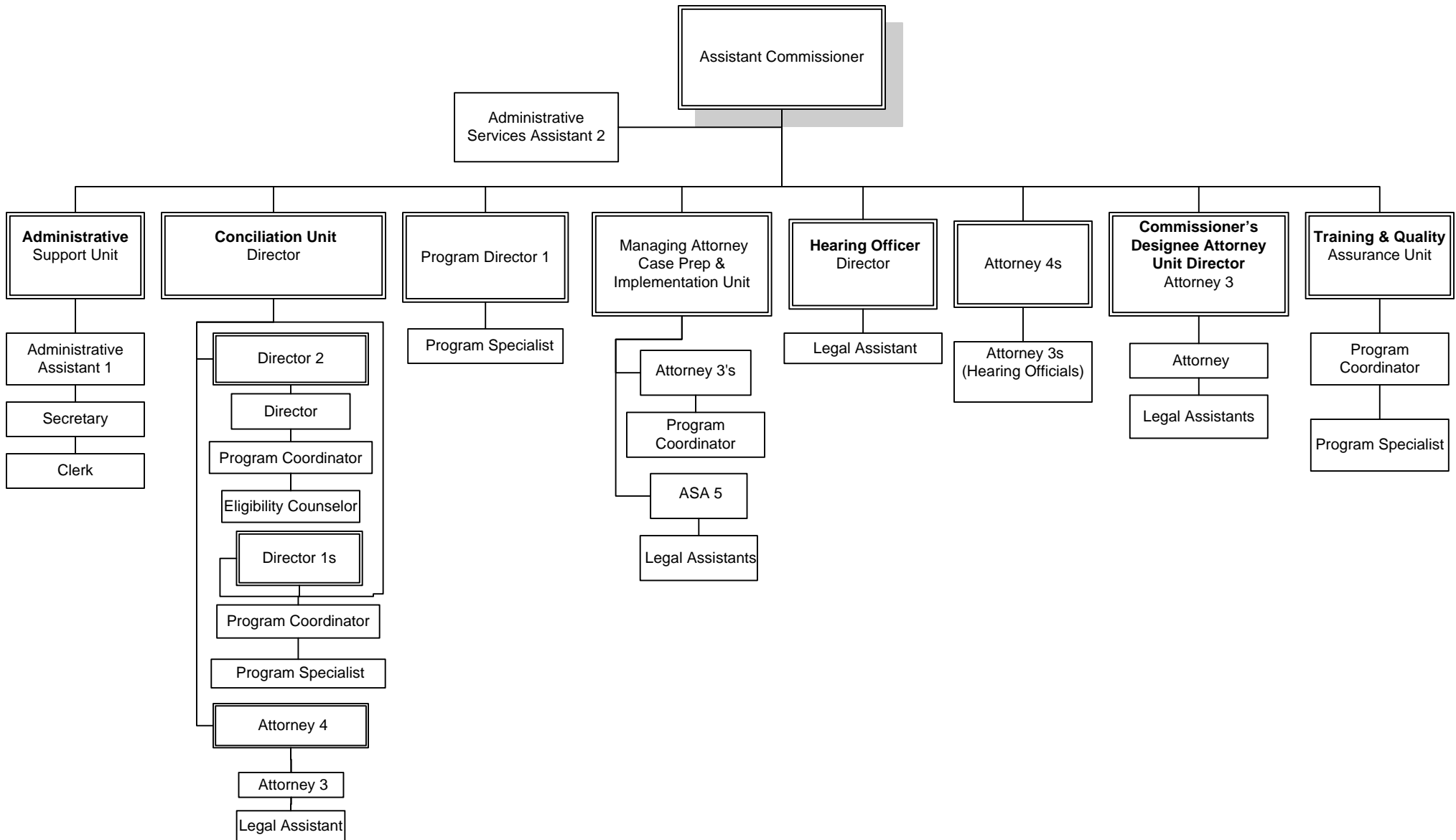
ORGANIZATION AND PERFORMANCE MANAGEMENT



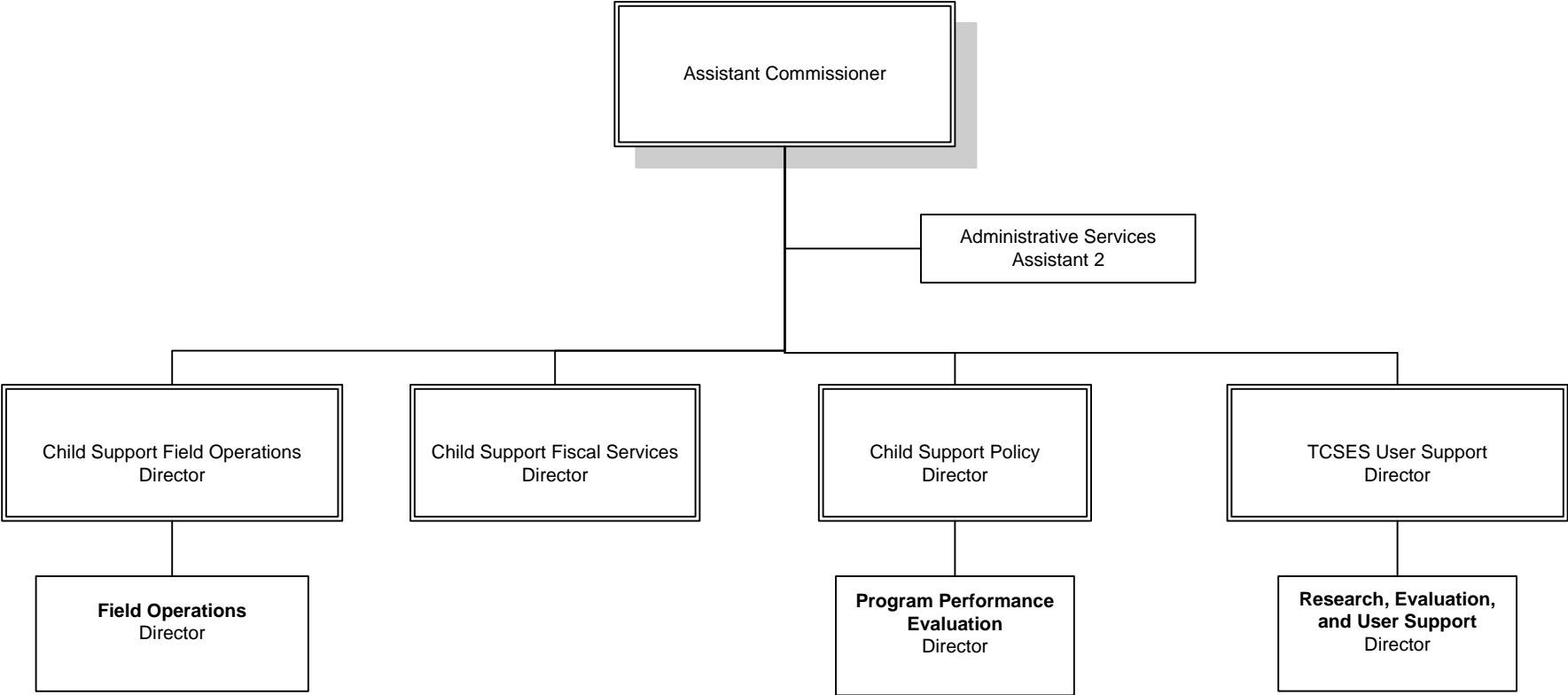
ORGANIZATION AND PERFORMANCE MANAGEMENT / Human Resources



APPEALS AND HEARINGS



CHILD SUPPORT SERVICES



CHILD SUPPORT / Field Operations

Director

Program Coordinator
Judicial Districts 11, 14
Family Centered Service Grant

Program Director 1

Judicial District 4
Program
Coordinator

Program Coordinator
Judicial Districts
24, 27, 29
VAoP Prog. Super.

Project Innovation
Coordinator

ASA 4
Jackson

ASA 4
Nashville

ASA 4
Chattanooga

Clerk 2
Nashville

Clerk 2
Chattanooga

ASA 2
Administrative
Support
Paternity Hotline
Security
Child Support
Inventory

Administrative
Secretary
Admin. Support
4th Judicial District
Paternity Hotline
Security
Child Support
Inventory

Case Managers (7)
Supervisors (2)
Attorneys (2)
Legal Assistant (1)
Secretaries (3)

Program Specialist 1
Coordinates VAoP
Program

Clerk 2

Child Support
Technician
Paternity Hotline
Child Support Inventory

Training Officer 1

Program Coordinator
Judicial Districts
17, 20, 22, 25, 26
Service of Process
Contracts 20 & 22
Liaison 20th Juv. Ct

Program Supervisor
Judicial Districts
1, 2, 5, 6, 12
Juv. Ct Clk & Process
Servers Contracts
Clear Wrap Demo. Grant

Program Coordinator
Judicial Districts
7, 8, 9, 13
Court Clerk Liaison

Program Coordinator
Judicial Districts
16, 18, 19, 23, 31
SAFE Backup

Training Officer 1
Judicial District 3, 10

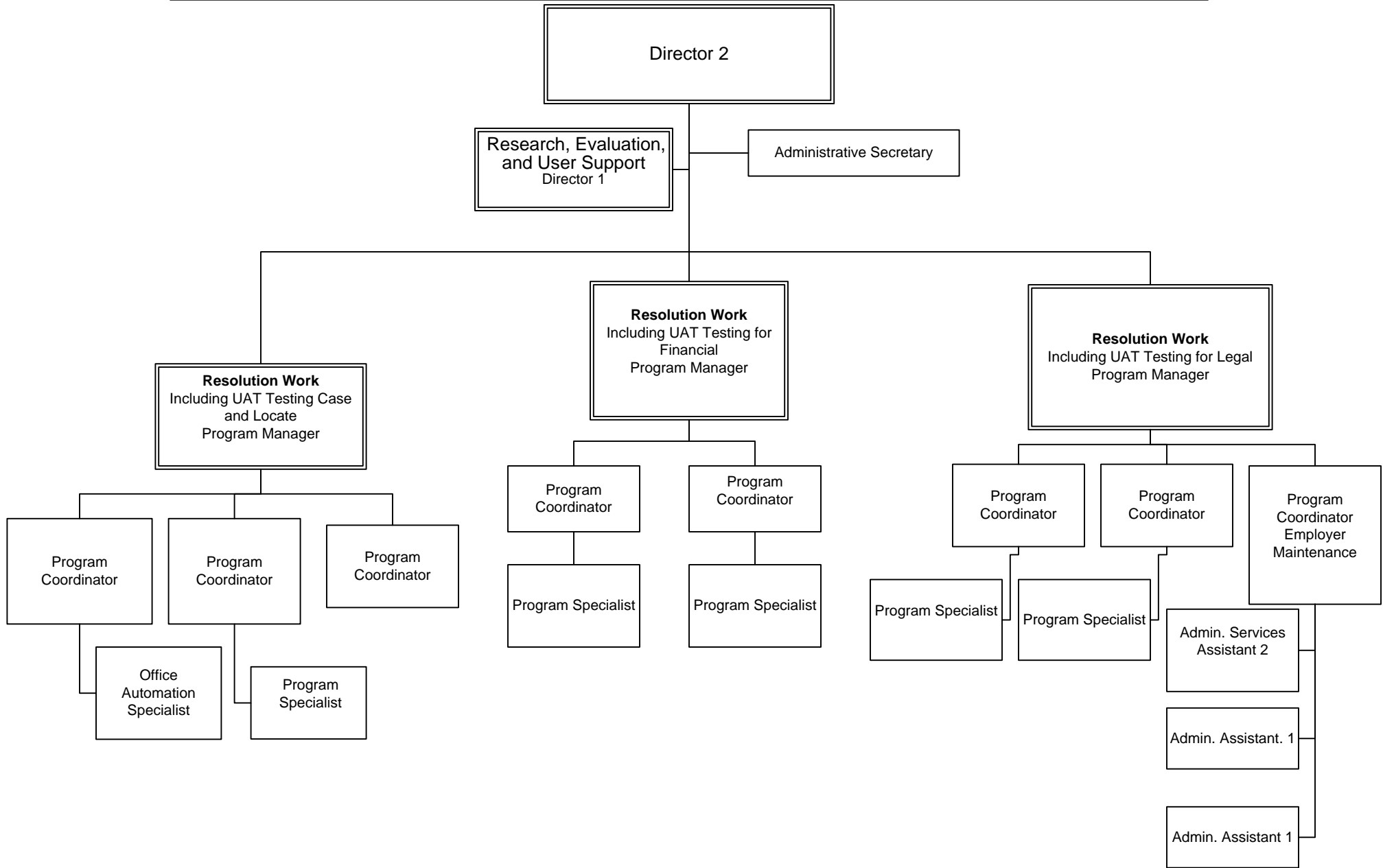
Training Officer 1
Judicial District 15, 21
SAFE Coordinator

Training Officer 1
Judicial Districts
28, 30

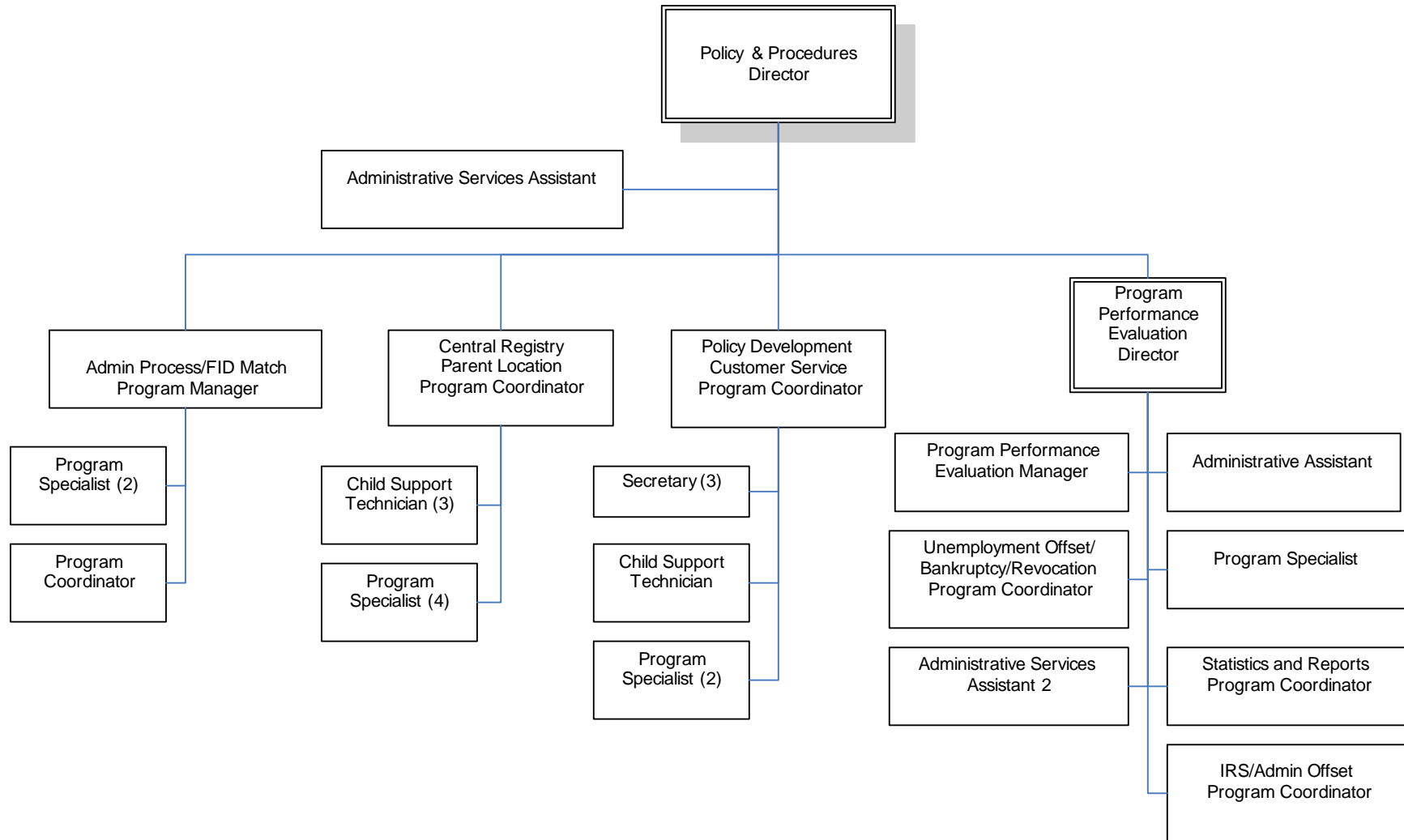
Program
Coordinator
Judicial District 30

Program Specialist 1
VAoP Program
Shelby Co
Outreach Specialist

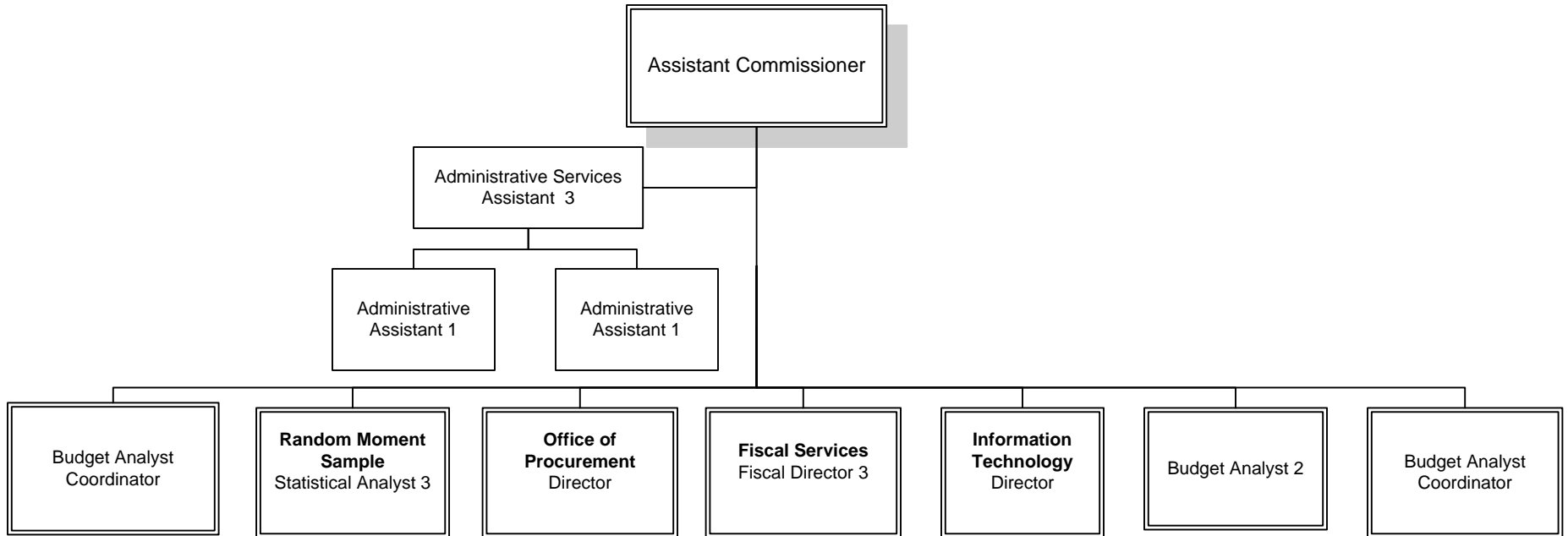
CHILD SUPPORT / TCSES User Support Units



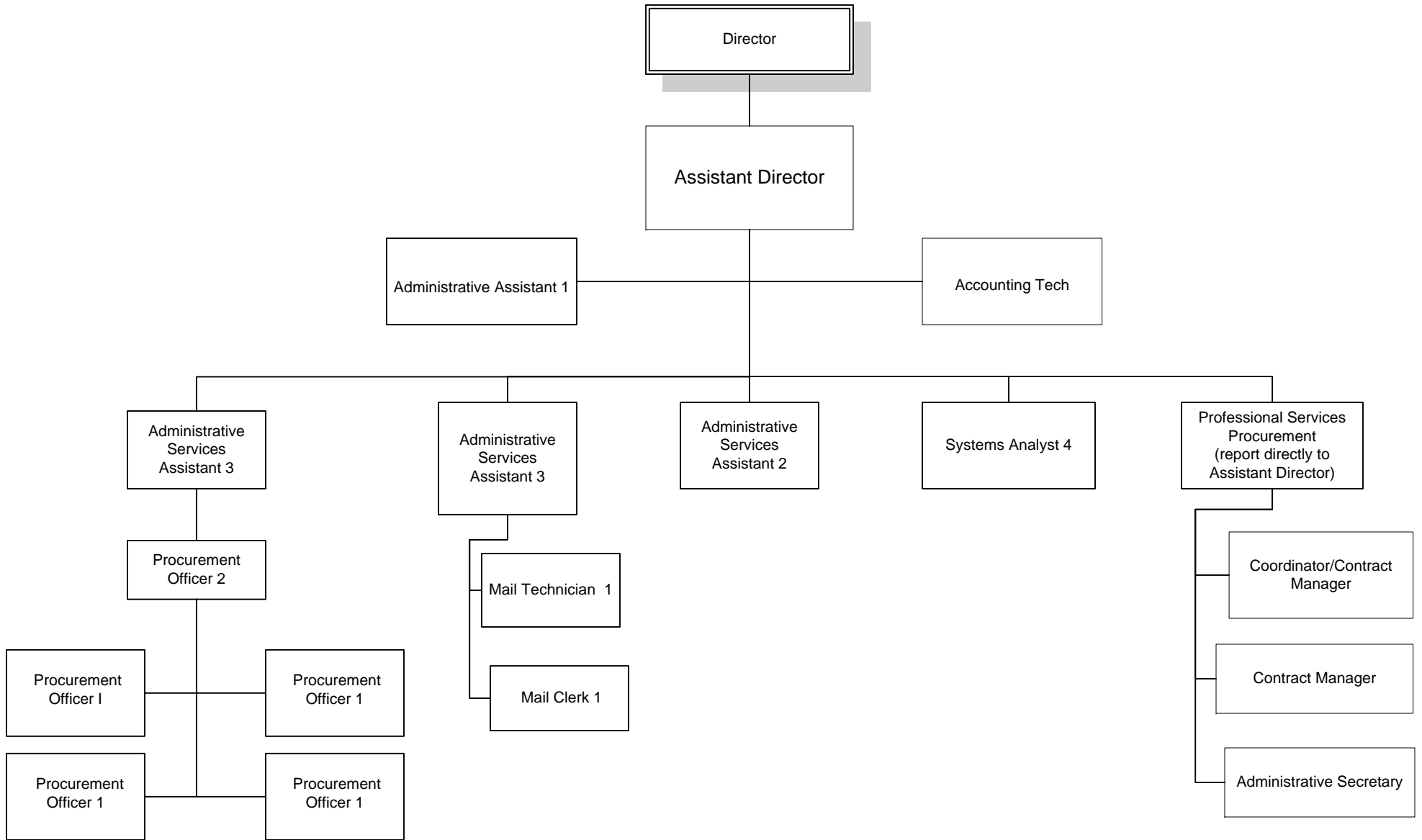
CHILD SUPPORT / Policy



FINANCE AND ADMINISTRATION



FINANCE & ADMINISTRATION / Office of Procurement



FINANCE & ADMINISTRATION/Fiscal Services

Director

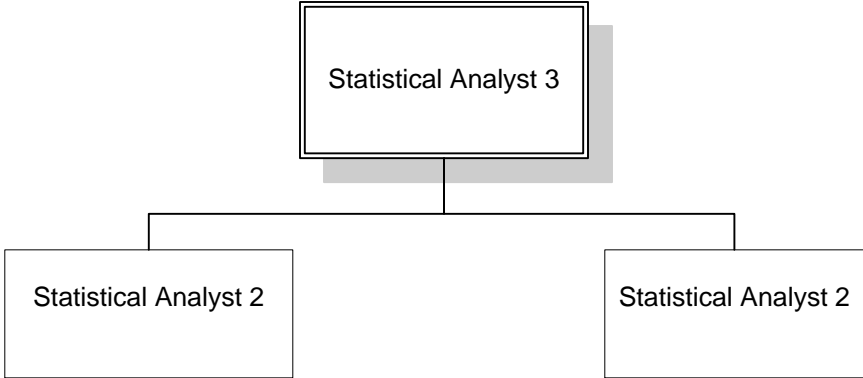
Fiscal Director 1
Administration and Family Assistance

Fiscal Director 1
Vocational Rehabilitation and Disability Determination

Fiscal Director 1
Childcare, Adult and Community Services

Accountant 2
Child Support

FINANCE & ADMINISTRATION / Random Moment Sample



**FINANCE & ADMINISTRATION/
Information Systems Division**

**Executive Director
Information Technology**

Application Architect

Administrative
Services Assistant 2

Family Assistance
Information Mgmt
and Support
Director

Child Support and Social
Services Systems
Director

Distributed Systems/
Web/GIS/Filenet
Director

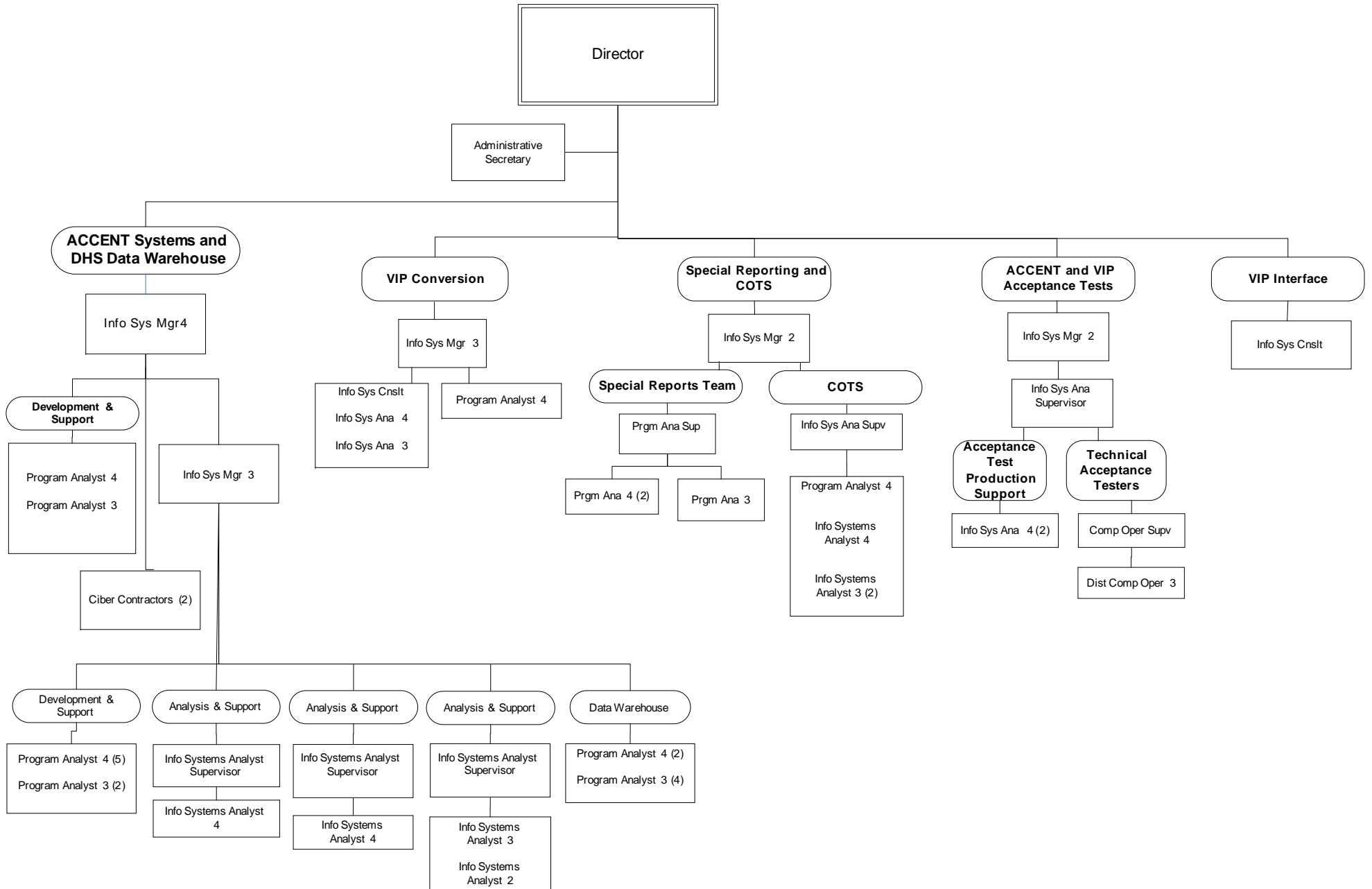
Child Care Systems
and Production
Services
Manager

Technical Support
Director

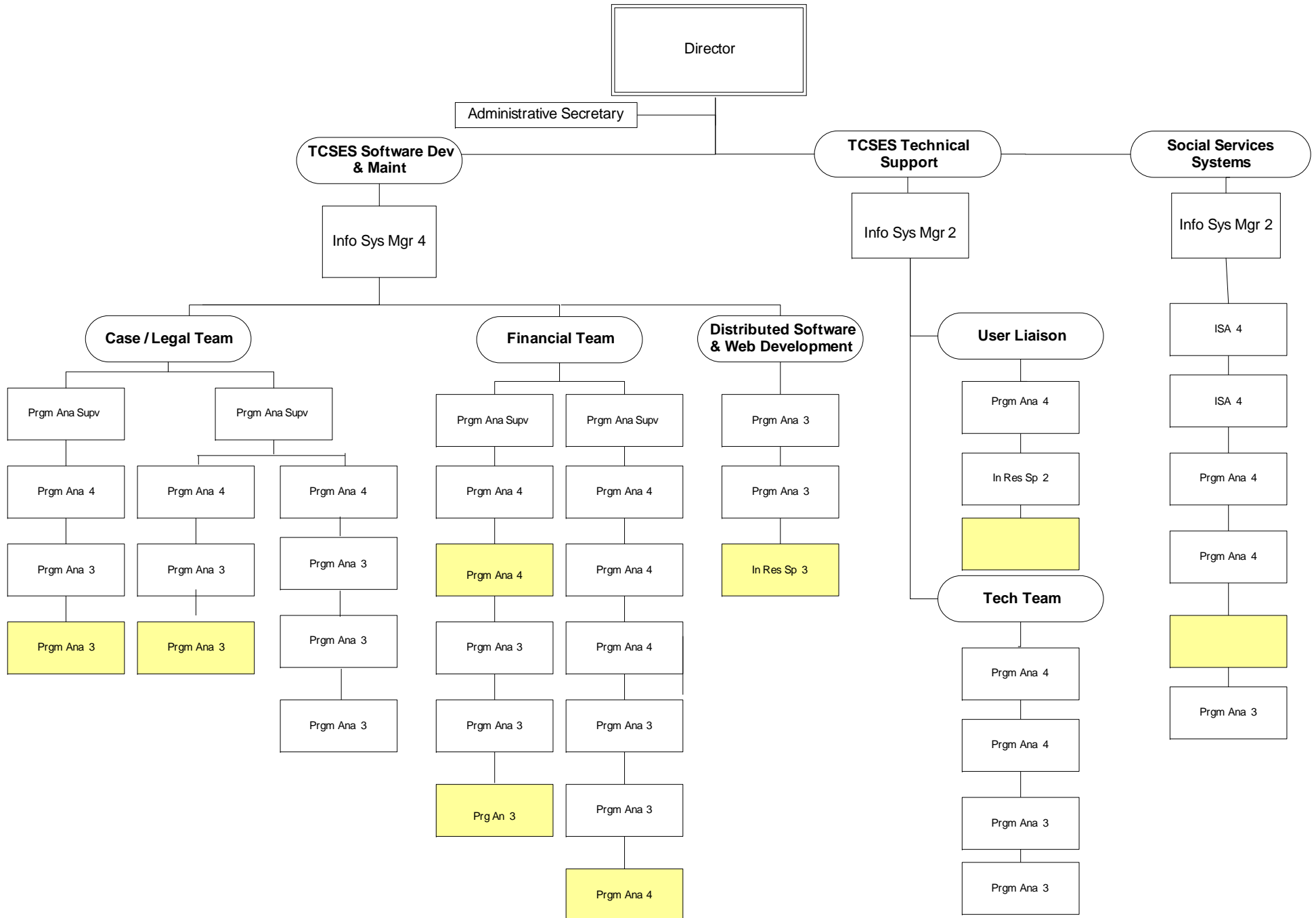
Planning, Policy,
Legislation,
Contracts, & Audit
Director

VIP Transition
Manager

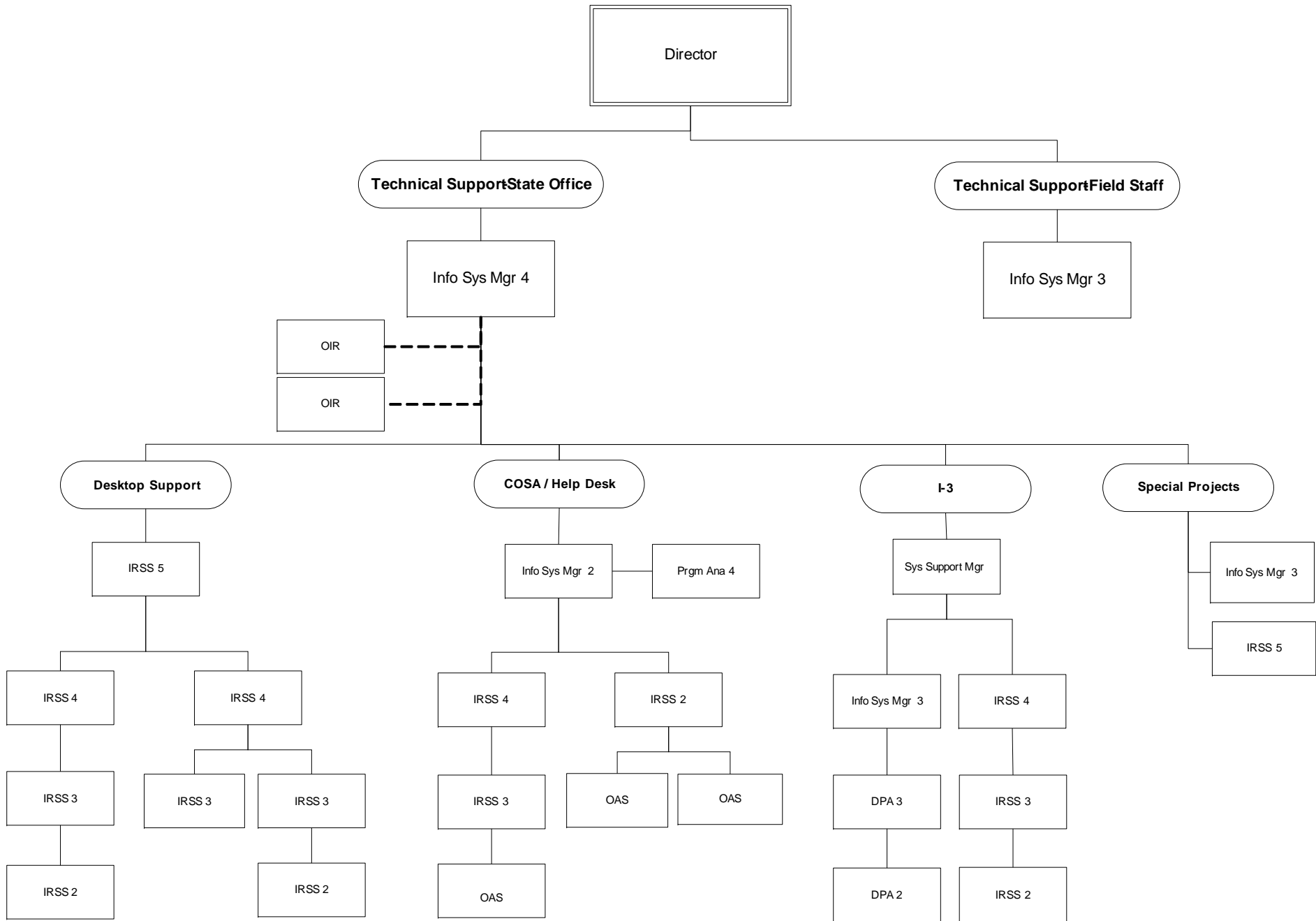
FINANCE & ADMINISTRATION/Family Assistance Information Management and Support



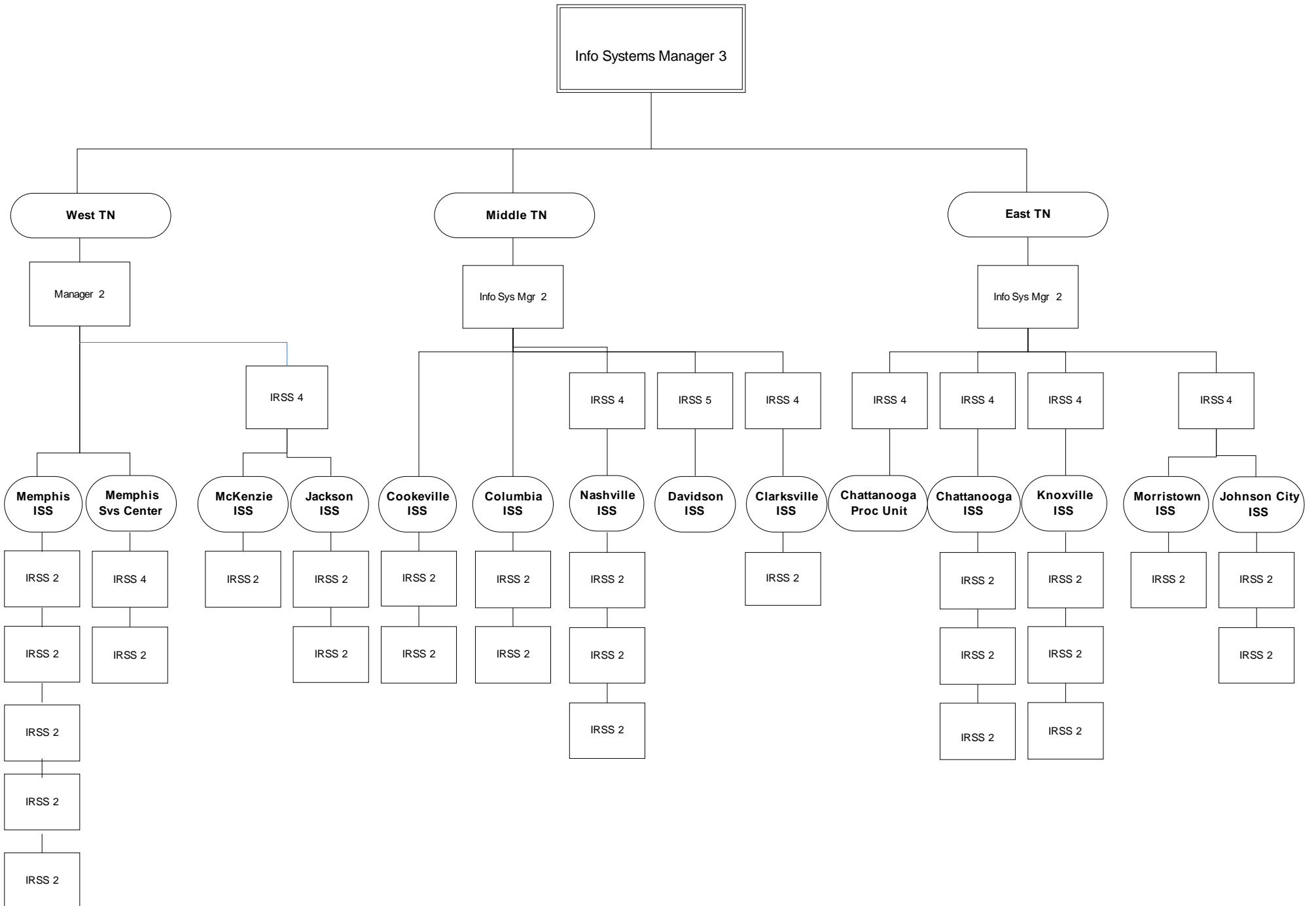
FINANCE & ADMINISTRATION/Child Support and Social Services Systems



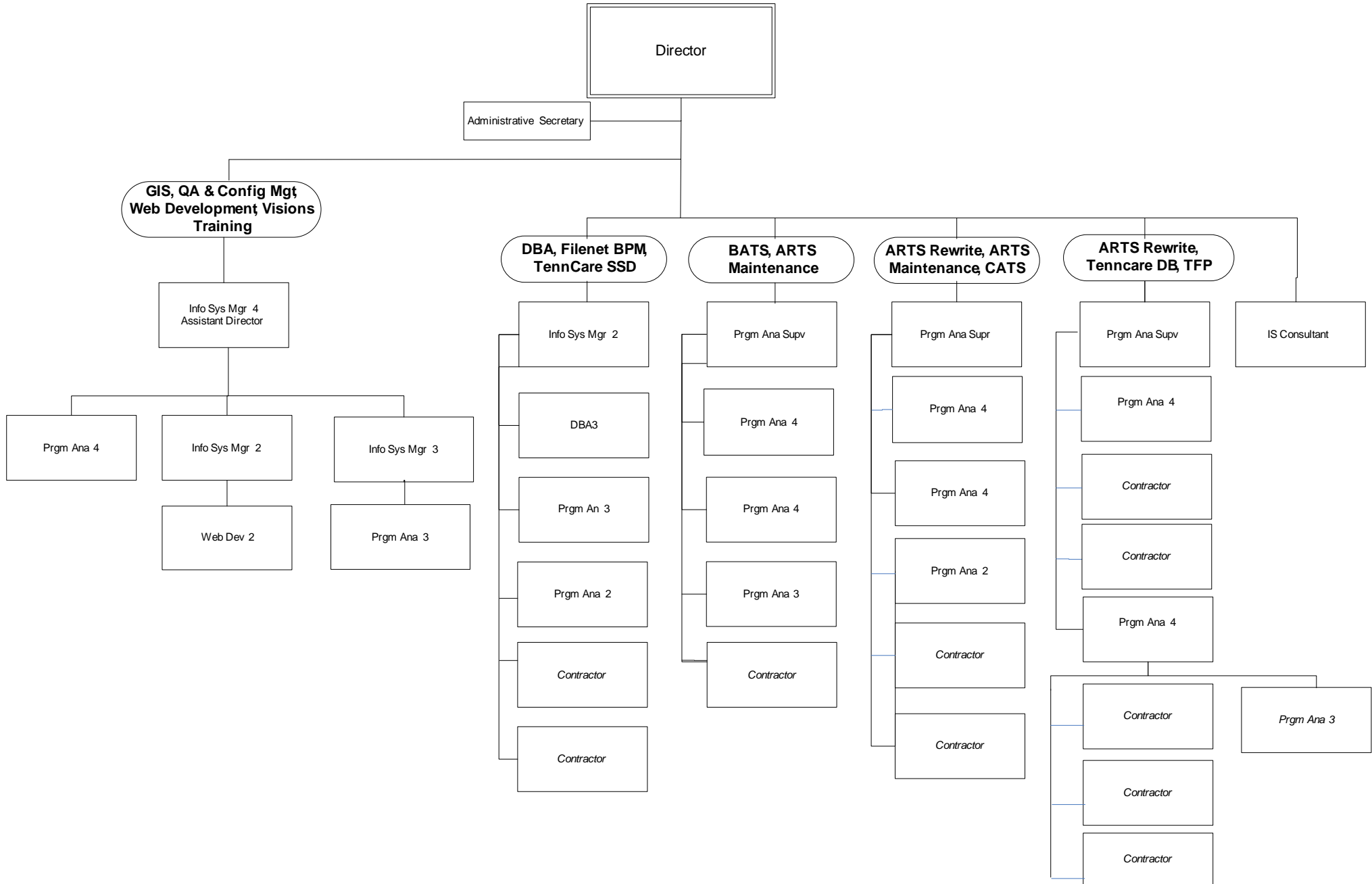
FINANCE & ADMINISTRATION/Technical Support – State Office and Field Staff



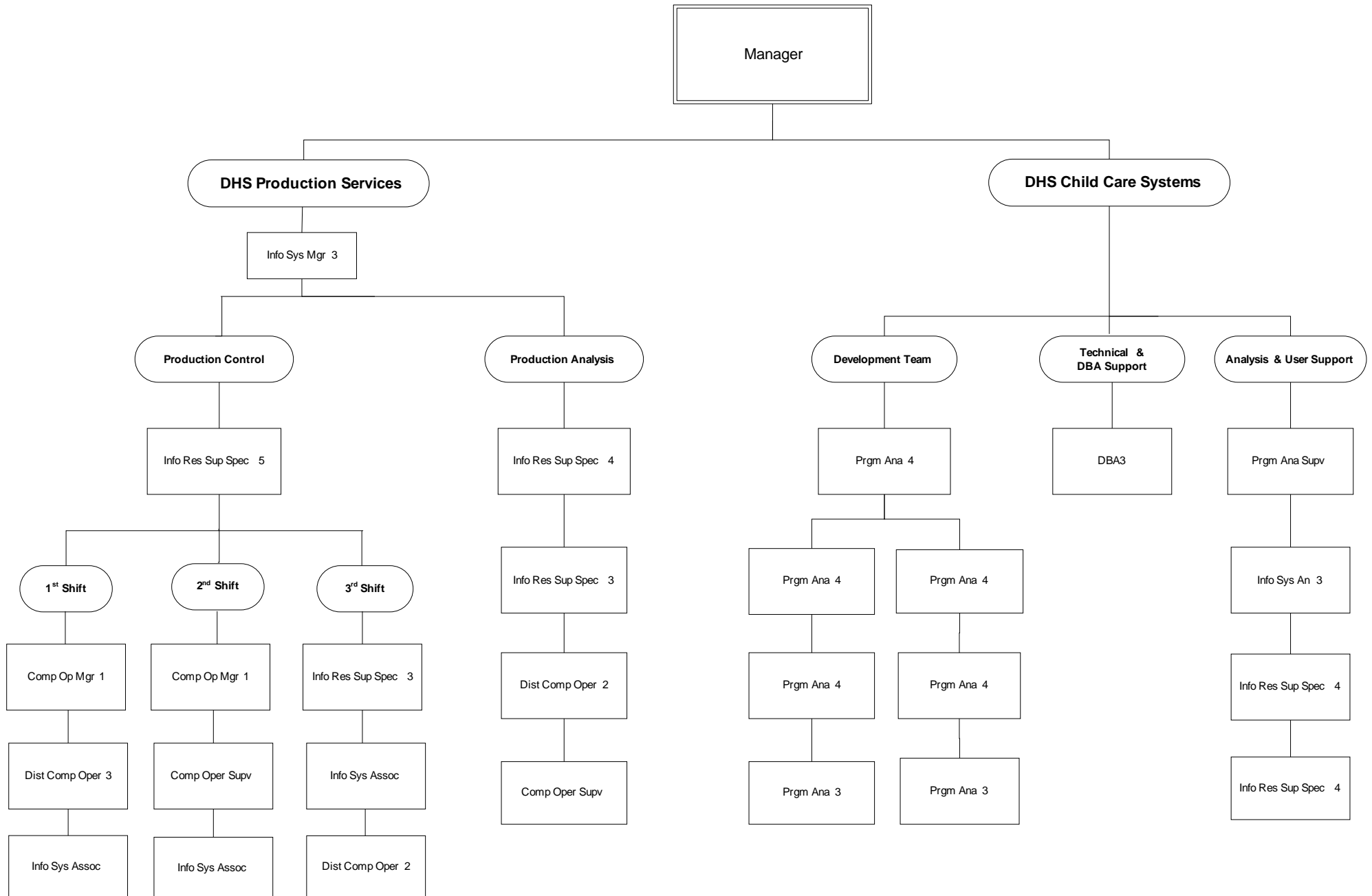
FINANCE & ADMINISTRATION/Technical Support – Field Staff



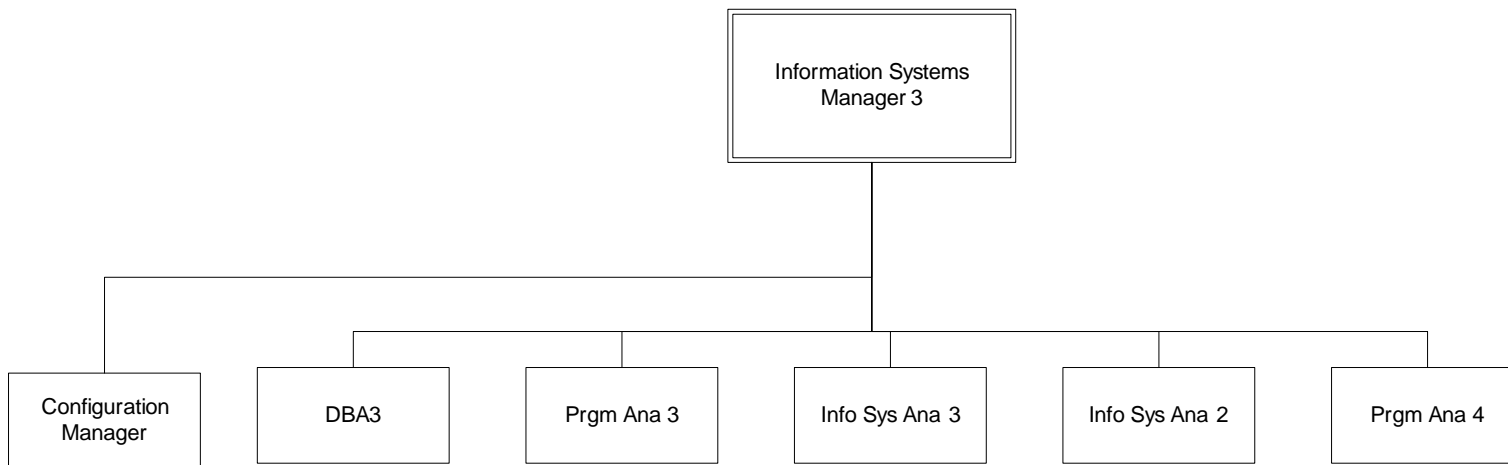
F & A/Distributed System / Web / Geographic Information Systems / Filenet



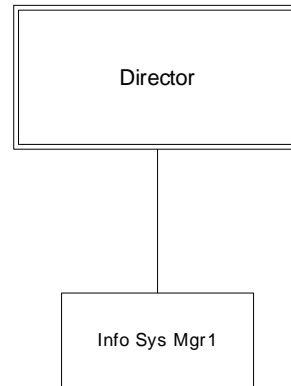
FINANCE & ADMINISTRATION/Child Care Systems and Production Services



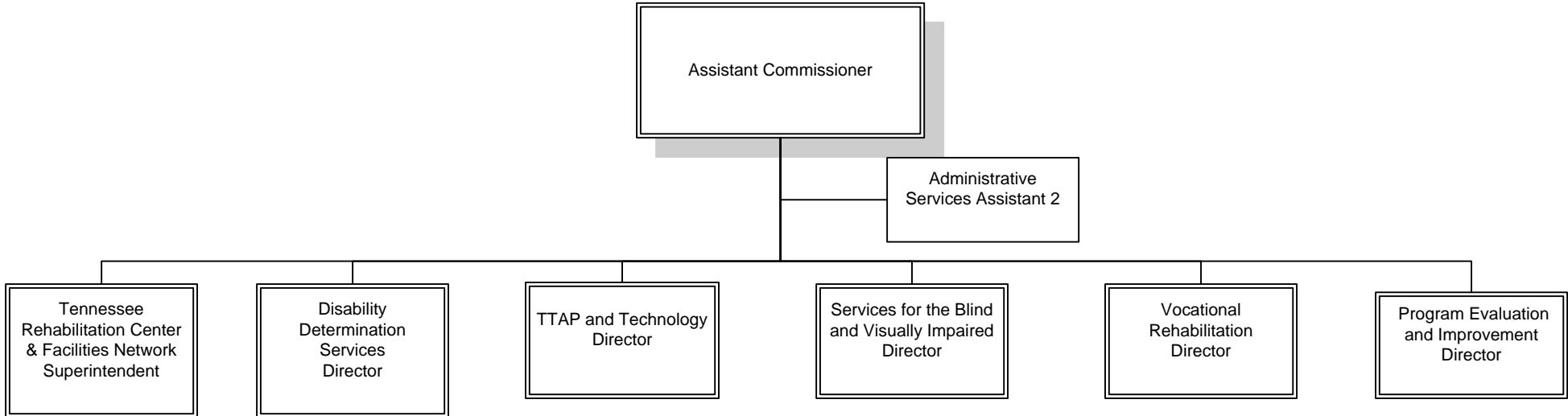
FINANCE & ADMINISTRATION/VIP Transition



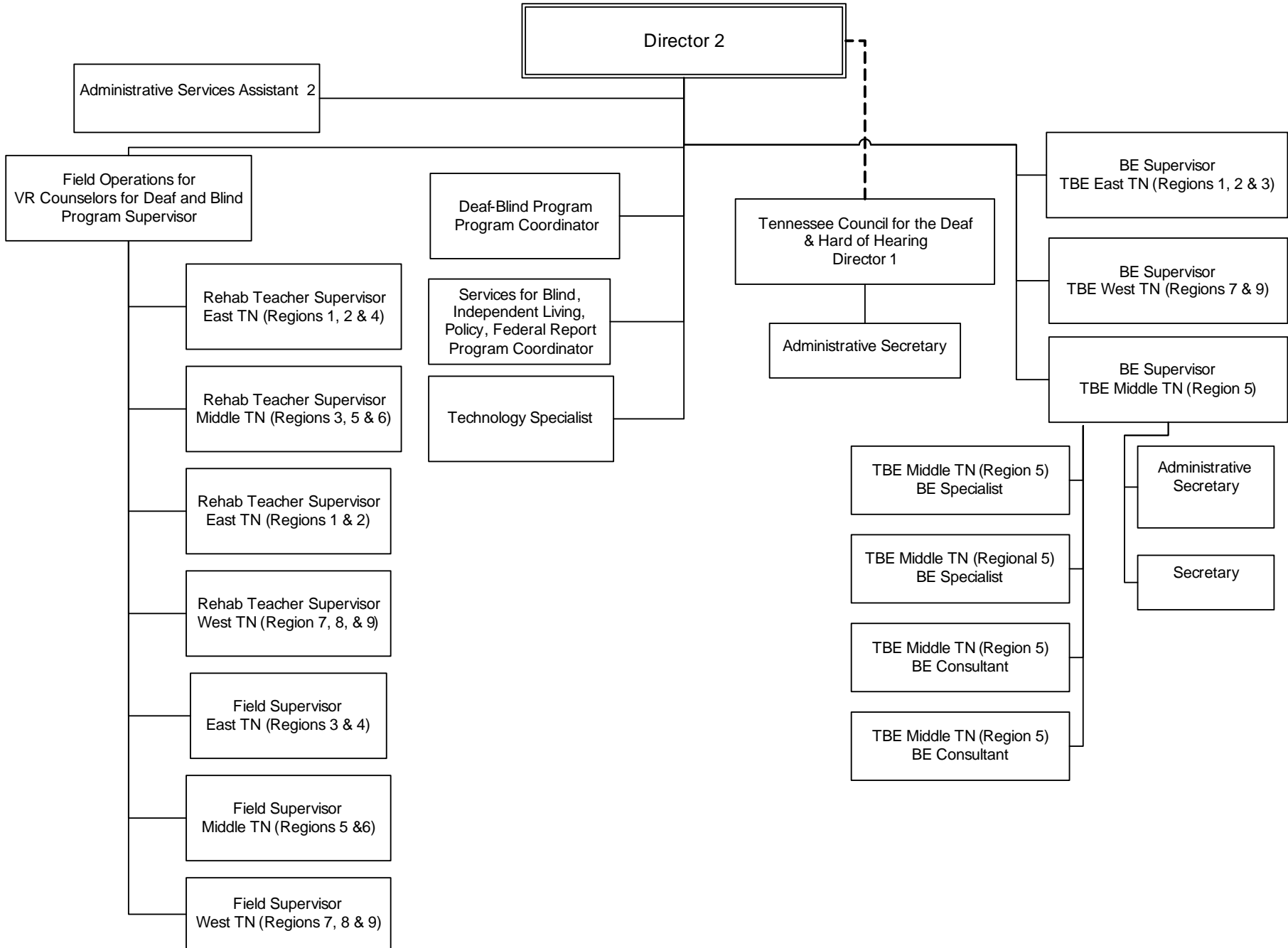
F & A/IT Planning, Policy, Legislation, Contracts & Audit



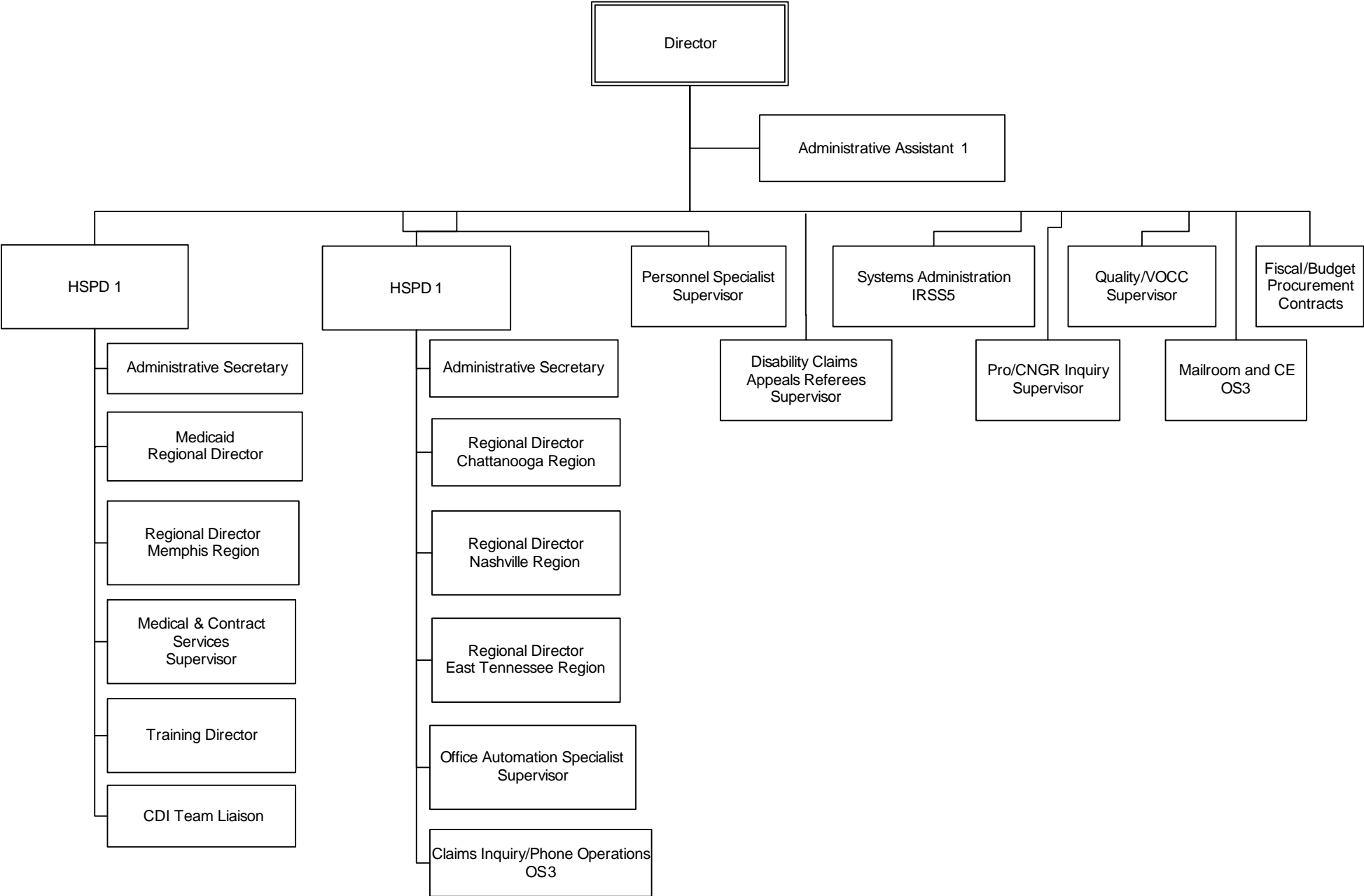
REHABILITATION SERVICES



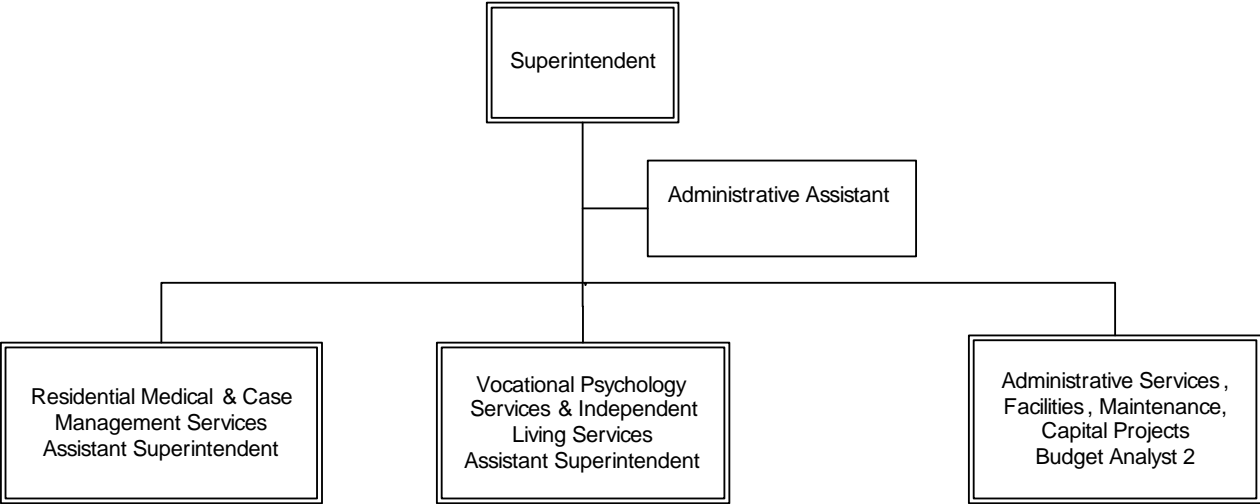
REHABILITATION SERVICES/ Services for the Blind and Visually Impaired and Services for the Deaf and Hard of Hearing



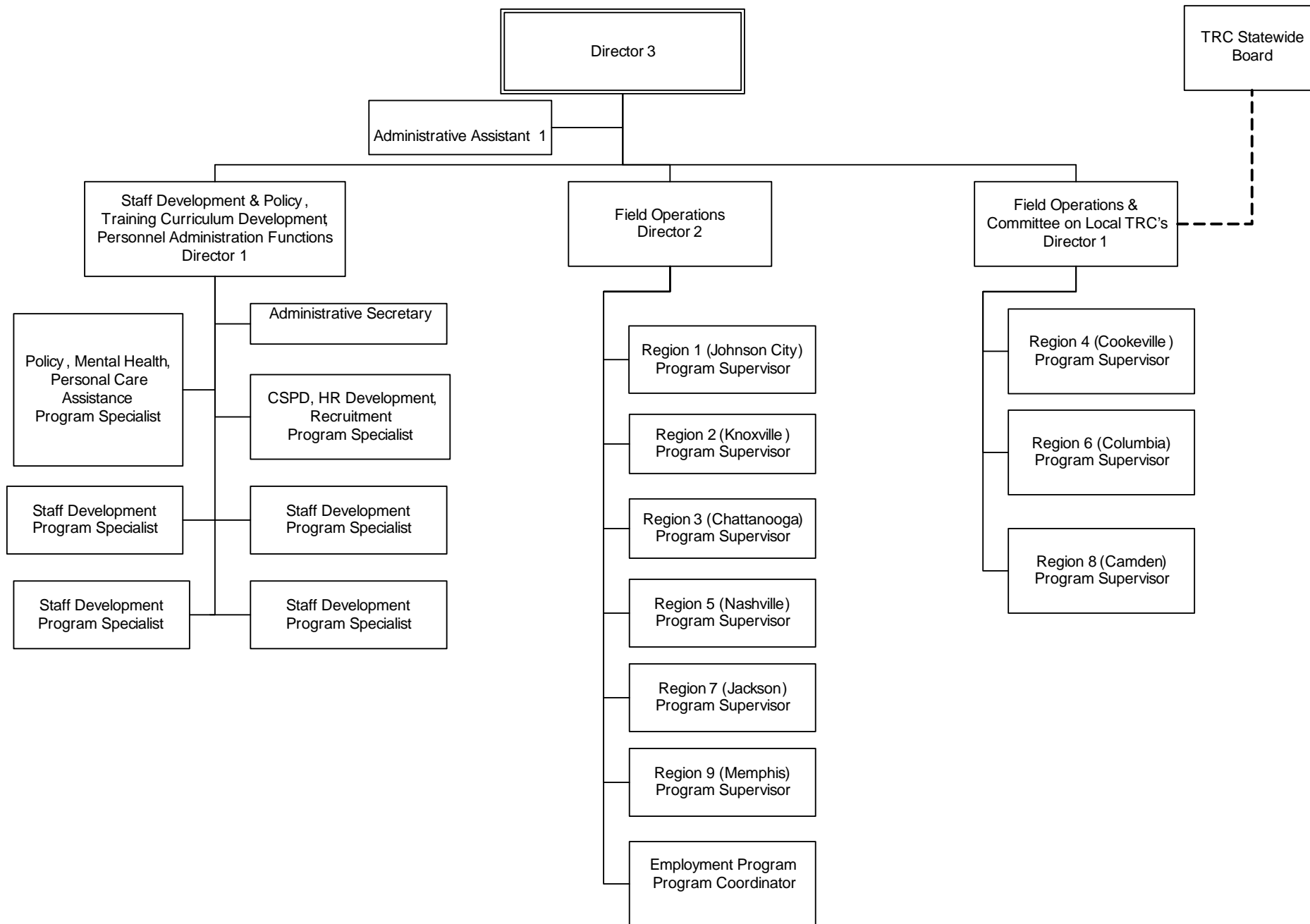
REHABILITATION SERVICES / Disability Determination Services



REHABILITATION SERVICES Tennessee Rehabilitation Center (TRC)



REHABILITATION SERVICES / Vocational Rehabilitation



REHABILITATION SERVICES / Program Evaluation and Improvement

