

# Summary – Nolichucky River Watershed (06010108)

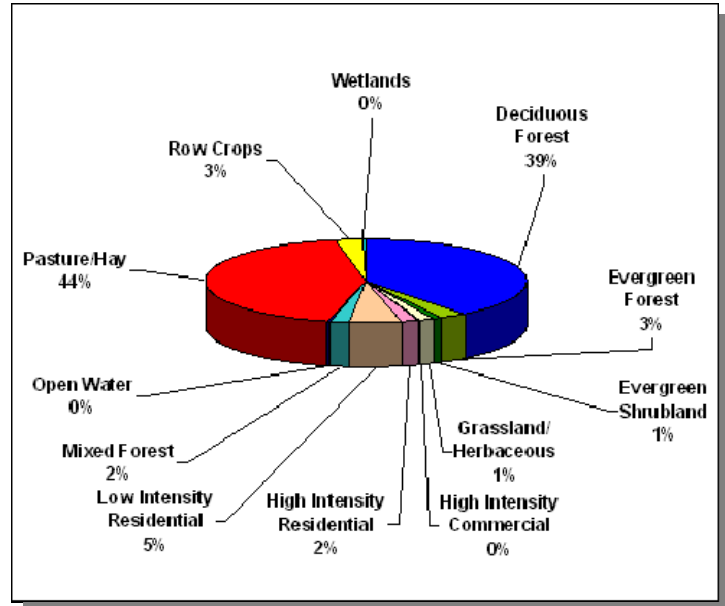
In 1996, the Tennessee Department of Environment and Conservation Division of Water Pollution Control adopted a watershed approach to water quality. This approach is based on the idea that many water quality problems, like the accumulation of point and nonpoint pollutants, are best addressed at the watershed level. Focusing on the whole watershed helps reach the best balance among efforts to control point sources of pollution and polluted runoff as well as protect drinking water sources and sensitive natural resources such as wetlands. Tennessee has chosen to use the USGS 8-digit Hydrologic Unit Code (HUC-8) as the organizing unit.

The Watershed Approach recognizes awareness that restoring and maintaining our waters requires crossing traditional barriers (point vs. nonpoint sources of pollution) when designing solutions. These solutions increasingly rely on participation by both public and private sectors, where citizens, elected officials, and technical personnel all have opportunities to participate. The Watershed Approach provides the framework for a watershed-based and community-based approach to address water quality problems.

Chapter 1 of the Nolichucky River Watershed Water Quality Management Plan discusses the Watershed Approach and emphasizes that the Watershed Approach is not a regulatory program or an EPA mandate; rather it is a decision-making process that reflects a common strategy for information collection and analysis as well as a common understanding of the roles, priorities, and responsibilities of all stakeholders within a watershed. Traditional activities like permitting, planning and monitoring are also coordinated in the Watershed Approach.

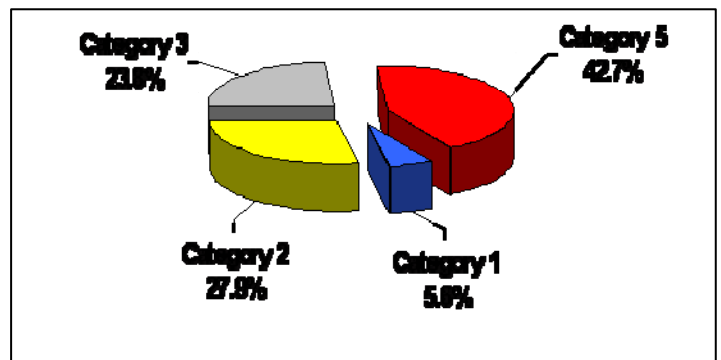
A detailed description of the watershed can be found in Chapter 2. The Nolichucky River Watershed is approximately 1,128 square miles and includes parts of seven Tennessee counties. A part of the Tennessee River drainage basin, the watershed has 2,854 stream miles and 383 lake acres (The entire watershed has 2,854 stream miles).

Five wildlife management areas, one national forest, and one stream listed in the National Rivers Inventory are located in the watershed. One hundred twenty-eight rare plant and animal species have been documented in the watershed, including seven rare fish species and ten rare mussel species.



*Land Use Distribution in the Tennessee Portion of the Nolichucky River Watershed.*

A review of water quality sampling and assessment is presented in Chapter 3. Using the Watershed Approach to Water Quality, 1,999 sampling events occurred in the Nolichucky River Watershed in 2000-2005. These were conducted at ambient, ecoregion or watershed monitoring sites. Monitoring results support the conclusion that 44.0% of stream miles assessed fully support one or more designated uses.



*Water Quality Assessment of Streams and Rivers in the Tennessee Portion of the Nolichucky River Watershed. Assessment data are based on the 2006 Water Quality Assessment of 1,915.4 stream miles in the Tennessee portion of the watershed.*

Also in Chapter 3, a series of maps illustrates overall use support in the watershed, as well as use support for the individual uses of Fish and Aquatic Life Support, Recreation, Irrigation, and Livestock Watering and Wildlife. Additional maps illustrate streams that are listed for impairment by specific causes (siltation, nutrients, E. coli).

Point and Nonpoint Sources are addressed in Chapter 4 which is organized by HUC-12 subwatersheds. Maps illustrating the locations of STORET monitoring sites and stream gauging stations are also presented in each subwatershed.

Point source contributions to the Nolichucky River Watershed consist of 34 individual NPDES-permitted facilities. Other permits in the watershed (as of October 20, 2008) are Mining Permits (10), Aquatic Resource Alteration Permits (107), Tennessee Multi-Sector Permits (117), Construction General Permits (164), Water Treatment Plant Permits (1), CAFO Permits (20), and Ready Mix Concrete Plant Permits (3). Agricultural operations include cattle, chicken, hog, and sheep farming. Maps illustrating the locations of permit sites and tables summarizing livestock practices are presented in each subwatershed.

Chapter 5 is entitled *Water Quality Partnerships in the Nolichucky River Watershed* and highlights partnerships between agencies and between agencies and landowners that are essential to success. Programs of federal agencies (Natural Resources Conservation Service, U.S. Fish and Wildlife Service, U.S. Geological Survey, Tennessee Valley Authority, U.S. Forest Service, and National Park Service) and state agencies (TDEC/State Revolving Fund, TDEC Division of Water Supply, Tennessee Department of Agriculture, Tennessee Wildlife Resources Agency, and North Carolina Division of Water Quality). Local initiatives of organizations active in the watershed (Greene County Soil Conservation District, Upper Nolichucky Watershed Alliance, Middle Nolichucky Watershed Alliance, Smoky Mountain RC&D Council, Appalachian RC&D Council) are also described.

Point and Nonpoint source approaches to water quality problems in the Nolichucky River Watershed are addressed in Chapter 6. Chapter 6 also includes comments received during public meetings, links to EPA-approved TMDLs in the watershed, and an assessment of needs for the watershed.

The full Nolichucky River Watershed Water Quality Management Plan can be found at: <http://www.state.tn.us/environment/wpc/watershed/wsm/plans/>

HUC-8	HUC-10	HUC-12
06010108	0601010802	060101080201 (Nolichucky River)
		060101080202 (North Indian Creek)
		060101080203 (Nolichucky River)
		060101080204 (Cherokee Creek)
		060101080205 (Nolichucky River)
		060101080206 (Little Limestone)
	0601010803	060101080301 (South Indian Creek, Upper)
		060101080302 (South Indian Creek, Middle)
		060101080303 (South Indian Creek, Lower)
	0601010804	060101080401 (Big Limestone Creek, Upper)
		060101080402 (Big Limestone Creek, Lower)
	0601010805	060101080501 (Sink Creek)
		060101080502 (Horse Creek)
		060101080503 (Camp Creek)
		060101080504 (Richland Creek)
		060101080505 (Pigeon River)
		060101080506 (Cove Creek)
	0601010806	060101080601 (Nolichucky River)
		060101080602 (Little Chucky Creek)
		060101080603 (Bent Creek)
		060101080604 (Flat Creek)
		060101080605 (Long Creek)
	0601010807	060101080701 (Lick Creek, Upper)
		060101080702 (Lick Creek, Middle)
		060101080703 (Roaring Fork Creek)
		060101080704 (Gap Creek)
		060101080705 (Lick Creek, Lower)

*The Tennessee Portion of the Nolichucky River Watershed is Composed of Twenty-seven USGS-Delineated Subwatersheds (12-Digit Subwatersheds).*