

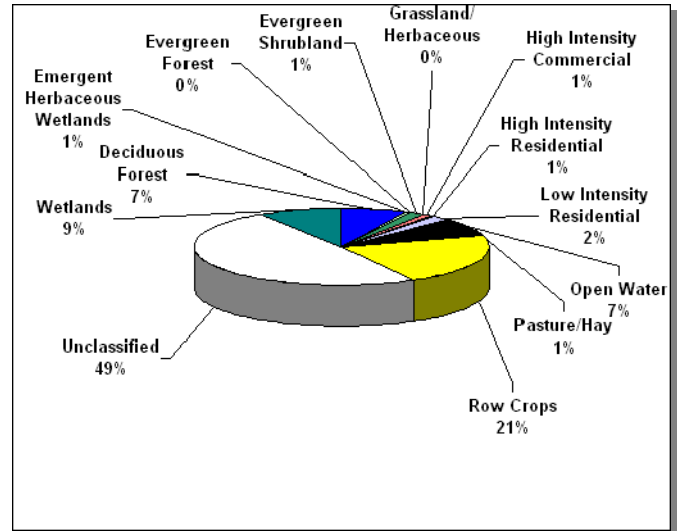
Summary – Mississippi River Watershed (08010100)

In 1996, the Tennessee Department of Environment and Conservation Division of Water Pollution Control adopted a watershed approach to water quality. This approach is based on the idea that many water quality problems, like the accumulation of point and nonpoint pollutants, are best addressed at the watershed level. Focusing on the whole watershed helps reach the best balance among efforts to control point sources of pollution and polluted runoff as well as protect drinking water sources and sensitive natural resources such as wetlands. Tennessee has chosen to use the USGS 8-digit Hydrologic Unit Code (HUC-8) as the organizing unit.

The Watershed Approach recognizes awareness that restoring and maintaining our waters requires crossing traditional barriers (point vs. nonpoint sources of pollution) when designing solutions. These solutions increasingly rely on participation by both public and private sectors, where citizens, elected officials, and technical personnel all have opportunities to participate. The Watershed Approach provides the framework for a watershed-based and community-based approach to address water quality problems.

Chapter 1 of the Mississippi River Water Quality Management Plan discusses the Watershed Approach and emphasizes that the Watershed Approach is not a regulatory program or an EPA mandate; rather it is a decision-making process that reflects a common strategy for information collection and analysis as well as a common understanding of the roles, priorities, and responsibilities of all stakeholders within a watershed. Traditional activities like permitting, planning and monitoring are also coordinated in the Watershed Approach.

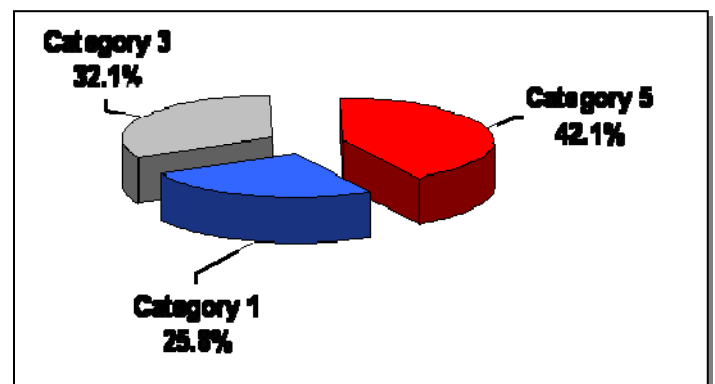
A detailed description of the watershed can be found in Chapter 2. The Mississippi River Watershed is approximately 1,086 square miles (590 mi² in Tennessee) and includes parts of five Tennessee counties. A part of the Mississippi River drainage basin, the watershed has 519.9 stream miles and 125 lake acres in Tennessee.



Land Use Distribution in the Tennessee Portion of the Mississippi River Watershed.

Two designated state natural areas, two national wildlife refuges, nine wildlife management areas, one state historic area, two state forests, and one state recreation area are located in the watershed. Thirty-five rare plant and animal species have been documented in the watershed, including seven rare fish species.

A review of water quality sampling and assessment is presented in Chapter 3. Using the Watershed Approach to Water Quality, 116 sampling events occurred in the Mississippi River Watershed in 2000-2005. These were conducted at ambient, ecoregion or watershed monitoring sites. Monitoring results support the conclusion that 38.0% of stream miles assessed fully support one or more designated uses.



Water Quality Assessment of Streams and Rivers in the Tennessee Portion of the Mississippi River Watershed. Assessment data are based on the 2006 Water Quality Assessment of 515.9 stream miles in the watershed.

Also in Chapter 3, a series of maps illustrates overall use support in the watershed, as well as use support for the individual uses of Fish and Aquatic Life Support, Recreation, Irrigation, and Livestock Watering and Wildlife. Another series of maps illustrates streams that are listed for impairment by specific causes (siltation, PCBs and dioxins, and nitrates).

Point and Nonpoint Sources are addressed in Chapter 4 which is organized by HUC-12 subwatersheds. Maps illustrating the locations of STORET monitoring sites and stream gauging stations are also presented in each subwatershed.

HUC-8	HUC-10	HUC-12
08010100	080101001	080101000106 (Mississippi River)
	080101002	080101000201 (Mississippi River)
		080101000202 (Mississippi River)
		080101000203 (Blue Bank Bayou)
		080101000204 (Mississippi River)
	0801010003	080101000301 (Mississippi River)
		080101000302 (Middle Forked Deer)
		080101000303 (Mississippi River)
		080101000304 (Mississippi River)
		080101000305 (Cold Creek)
	0801010004	080101000401 (Mississippi River)
		080101000402 (Mississippi River)
		080101000403 (Mississippi River)
		080101000404 (Mississippi River)
		080101000405 (Mississippi River)

The Tennessee Portion of the Mississippi River Watershed is Composed of fifteen USGS-Delineated Subwatersheds (12-Digit Subwatersheds).

Point source contributions to the Tennessee portion of the Mississippi River Watershed consist of eighteen individual NPDES-permitted facilities, four of which discharge into streams that have been listed on the 2006 303(d) list. Other point source permits in the watershed (as of October 7, 2008) are Aquatic Resource Alteration Permits (39), Tennessee Multi-Sector Permits (104), Construction General Permits (59), and Ready Mix Concrete Plant Permits (3). Agricultural operations include cattle, chicken, hog, and sheep farming. Maps illustrating the locations of permit sites and tables summarizing livestock practices are presented in each subwatershed.

Chapter 5 is entitled *Water Quality Partnerships in the Mississippi River Watershed* and highlights partnerships between agencies and between agencies and landowners that are essential to success. Programs of federal agencies (Natural Resources Conservation Service, U.S. Fish and Wildlife Service, U.S. Geological Survey, and U.S. Army Corps of Engineers), and state agencies (TDEC/State Revolving Fund, TDEC Division of Water Supply, Tennessee Department of Agriculture, West Tennessee River Basin Authority, and Tennessee Wildlife Resources Agency) as well as Kentucky Division of Water) are summarized. Local initiatives of organizations active in the watershed (Friends of West Tennessee Refuges) are also described.

Point and Nonpoint source approaches to water quality problems in the Mississippi River Watershed are addressed in Chapter 6. Chapter 6 also includes comments received during public meetings, links to EPA-approved TMDLs in the watershed, and an assessment of needs for the watershed.

The full Mississippi River Watershed Water Quality Management Plan can be found at: <http://www.state.tn.us/environment/wpc/watershed/wsm/plans/>