

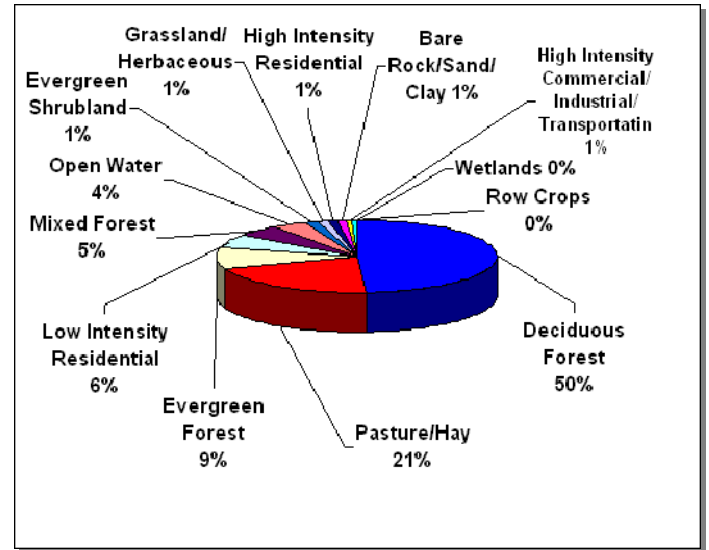
## Summary – Lower French Broad River Watershed (06010107)

In 1996, the Tennessee Department of Environment and Conservation Division of Water Pollution Control adopted a watershed approach to water quality. This approach is based on the idea that many water quality problems, like the accumulation of point and nonpoint pollutants, are best addressed at the watershed level. Focusing on the whole watershed helps reach the best balance among efforts to control point sources of pollution and polluted runoff as well as protect drinking water sources and sensitive natural resources such as wetlands. Tennessee has chosen to use the USGS 8-digit Hydrologic Unit Code (HUC-8) as the organizing unit.

The Watershed Approach recognizes awareness that restoring and maintaining our waters requires crossing traditional barriers (point vs. nonpoint sources of pollution) when designing solutions. These solutions increasingly rely on participation by both public and private sectors, where citizens, elected officials, and technical personnel all have opportunities to participate. The Watershed Approach provides the framework for a watershed-based and community-based approach to address water quality problems.

Chapter 1 of the Lower French Broad River Watershed Water Quality Management Plan discusses the Watershed Approach and emphasizes that the Watershed Approach is not a regulatory program or an EPA mandate; rather it is a decision-making process that reflects a common strategy for information collection and analysis as well as a common understanding of the roles, priorities, and responsibilities of all stakeholders within a watershed. Traditional activities like permitting, planning and monitoring are also coordinated in the Watershed Approach.

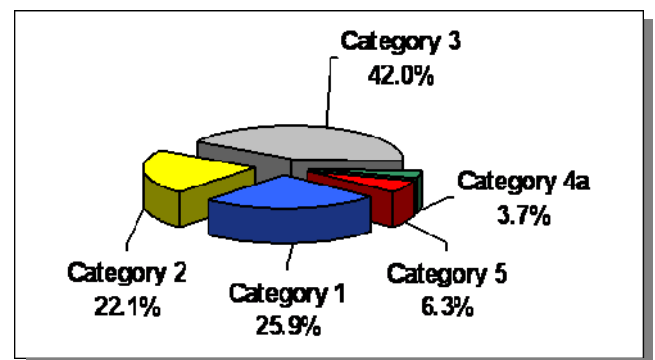
A detailed description of the watershed can be found in Chapter 2. The Lower French Broad River Watershed is approximately 796 square miles and is located primarily in four counties. A part of the Tennessee River drainage basin, the watershed has 1,205.6 stream miles and 30,400 lake acres.



*Land Use Distribution in the Lower French Broad River Watershed.*

The Lower French Broad River Watershed has two State Scenic Rivers, one designated state natural area, three wildlife management areas, part of one national park, two refuges, and three streams listed in the National Rivers Inventory. One hundred thirty-one rare plant and animal species have been documented in the watershed, including nine rare fish species, ten rare mussel species, and one rare crustacean species.

A review of water quality sampling and assessment is presented in Chapter 3. Using the Watershed Approach to Water Quality, 800 sampling events occurred in the Lower French Broad River Watershed in 2000-2005. These were conducted at ambient, ecoregion or watershed monitoring sites. Monitoring results support the conclusion that 82.8% of stream miles assessed fully support one or more designated uses.



*Water Quality Assessment of Streams and Rivers in the Lower French Broad River Watershed. Assessment data are based on the 2006 Water Quality Assessment of 1,205.6 stream miles in the Watershed.*

Also in Chapter 3, a series of maps illustrates overall use support in the watershed, as well as use support for the individual uses of Fish and Aquatic Life Support, Recreation, Irrigation, and Livestock Watering and Wildlife. Additional maps illustrate streams that are listed for impairment by specific causes (siltation, nutrients, E.coli).

Point and Nonpoint Sources are addressed in Chapter 4 which is organized by HUC-12 subwatersheds. Maps illustrating the locations of STORET monitoring sites and stream gauging stations are also presented in each subwatershed.

Point source contributions to the Lower French Broad River Watershed consist of 27 individual NPDES-permitted facilities. Other permits in the watershed (as of October 13, 2008) are Aquatic Resource Alteration Permits (110), Tennessee Multi-Sector Permits (34), Construction General Permits (197), mining permits (6), Ready-Mix Concrete Permits (11), Underground Storage Tank permits (1), and Water Treatment Plant permits (1)

Agricultural operations include cattle, chicken, hog, and sheep farming. Maps illustrating the locations of permit sites and tables summarizing livestock practices are presented in each subwatershed.

HUC-8	HUC-10	HUC-12
06010107	0601010701	060101070101 (Douglas Lake, Upper)
		060101070102 (Douglas Lake, Middle)
		060101070103 (Douglas Lake, Lower)
		060101070104 (Mud Creek)
	0601010702	060101070201 (French Broad River)
		060101070202 (Boyds Creek)
		060101070203 (Dumplin Creek)
		060101070204 (French Broad River)
		060101070205 (Tuckahoe Creek)
	0601010703	060101070301 (M. Prong Little Pigeon)
		060101070302 (Porters Creek)
		060101070303 (E. Prong Little Pigeon)
		060101070304 (Webb Creek)
		060101070305 (Bird Creek)
		060101070306 (E. Fork Dunn Creek)
		060101070307 (W. Prong Little Pigeon)
		060101070308 (Le Conte Creek)
		060101070309 (Baskins Creek)
		060101070310 (Roaring Fork)
		060101070311 (Dudley Creek)
		060101070312 (Waldon Creek)
		060101070313 (W. Prong Little Pigeon)
		060101070314 (Middle Creek)
		060101070315 (Little Pigeon, Lower)

Chapter 5 is entitled *Water Quality Partnerships in the Lower French Broad River Watershed* and highlights partnerships between agencies and between agencies and landowners that are essential to success. Programs of federal agencies (Natural Resources Conservation Service, U.S. Fish and Wildlife Service, U.S. Geological Survey, Tennessee Valley Authority, and National Park Service), and state agencies (TDEC/State Revolving Fund, TDEC Division of Water Supply, Tennessee Department of Agriculture, and Tennessee Wildlife Resources Agency). Local initiatives of organizations active in the watershed (Smoky Mountain RC&D Council, French Broad Preservation Association) are also described.

Point and Nonpoint source approaches to water quality problems in the Lower French Broad River Watershed are addressed in Chapter 6. Chapter 6 also includes comments received during public meetings, links to EPA-approved TMDLs in the watershed, and an assessment of needs for the watershed.

The full Lower French Broad River Watershed Water Quality Management Plan can be found at: <http://www.state.tn.us/environment/wpc/watershed/wsmplans/>

*The Lower French Broad River Watershed is Composed of twenty-four USGS-Delineated Subwatersheds (12-Digit Subwatersheds).*