

SHELBYVILLE C.B.D. INSET

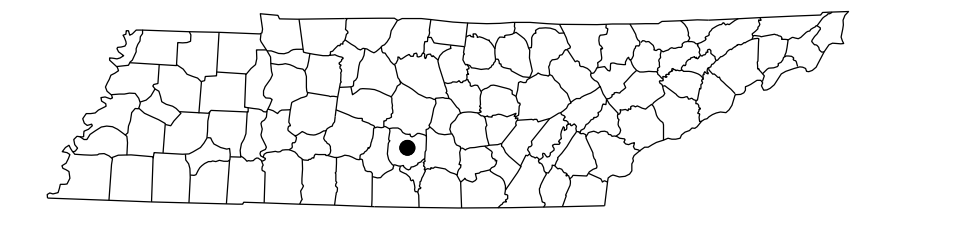
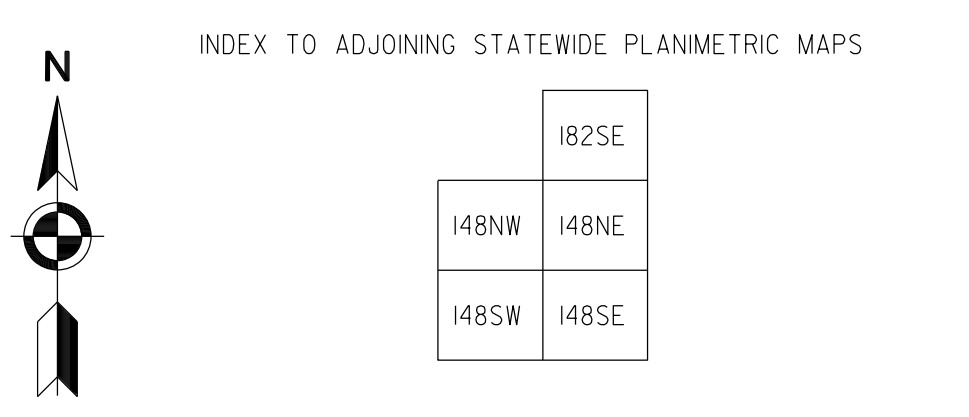
REVISIONS	
FEATURE	DATE

LEGEND

- SCHOOL
 - POST OFFICE
 - COURT HOUSE
 - CITY HALL OR COMMUNITY CENTER
 - MONUMENT
 - AIRPORT - COMPLETE FACILITIES
 - AIRPORT - LIMITED FACILITIES
 - LANDING AREA OR STRIP
 - POWER PLANT
 - WEIGHT STATION
 - HIGHWAY GARAGE (S-STATE, C-COUNTY)
 - POINTS OF INTEREST
 - INTERSTATE HIGHWAY MARKER
 - U.S. NUMBERED HIGHWAY MARKER
 - STATE HIGHWAY MARKER
 - FEDERAL AID PRIMARY SYSTEM
 - STATE HIGHWAY MARKER
 - FEDERAL AID SECONDARY SYSTEM
 - LAKE WITH DAM
 - RESERVOIR, POND OR LAKE
 - LEVEE OR DYKE
 - NARROW STREAM
 - WIDE STREAM
 - DAM WITH LOCK
 - HEAD OF NAVIGATION
 - NAVIGABLE STREAM
 - GRADE CROSSING
 - UNDERPASS - ROAD BELOW
 - OVERHEAD - ROAD ABOVE
 - RAILROAD TUNNEL
 - GRADE SEPARATION
 - FORD
 - LOW WATER BRIDGE
 - FREE FERRY OR TOLL FERRY
 - HIGHWAY BRIDGE - OVER 20 FEET
 - HIGHWAY BRIDGE - LONG RIVER CROSSING (CONCRETE, S-STEEL, W-WOOD)
 - PRIMITIVE OR UNIMPROVED ROAD
 - GRADED AND DRAINED SOIL, GRAVEL OR STONE SURFACED ROAD
 - PAVED ROAD
 - GRADED AND DRAINED, SOIL, GRAVEL OR STONE SURFACED HIGHWAY
 - PAVED HIGHWAY
 - DIVIDED ROADWAY
 - DISTANCE IN MILES BETWEEN DESIGNATED POINTS
 - FULL CONTROL OF ACCESS
 - NATIONAL PARK SERVICE HIGHWAY
 - COUNTY LINE
 - STATE LINE
 - INCORPORATED CITY BOUNDARY
 - RESERVATION BOUNDARY
- LEGEND**
- COVERAGE COUNTS
 - ATR
 - EDL

NOTES

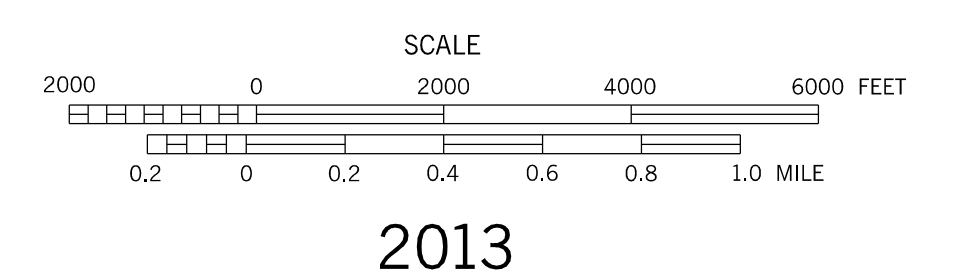
STATION NUMBERS ON SHELBYVILLE CITY MAP
 36-38-39-40-41-42-54-55-57-83-84-85-88-89-90-91-
 92-93-94-96-103-104-105-106-107-108-109-110-111-112-
 113-114-115-116-117-120-121-127-128-129-130-131-132-
 133-134-135-137-140-141-142-144-145-147-148-149-153-154



ADVANCED PRINT SUBJECT TO CORRECTION

2013 TRAFFIC MAP
SHELBYVILLE
 BEDFORD COUNTY
 TENNESSEE

PREPARED BY THE
TENNESSEE DEPARTMENT OF TRANSPORTATION
 LONG RANGE AND PROJECT PLANNING DIVISIONS
 IN COOPERATION WITH THE
 U.S. DEPARTMENT OF TRANSPORTATION
 FEDERAL HIGHWAY ADMINISTRATION



2013

AUTHORIZATION NO. 4090020250

County Number	Station Number	Year	AADT
2	000002	2013	3707
2	000003	2013	926
2	000004	2013	923
2	000005	2013	4443
2	000006	2013	1146
2	000007	2013	1214
2	000009	2013	879
2	000010	2013	741
2	000012	2013	15161
2	000015	2013	1096
2	000016	2013	1163
2	000017	2013	1460
2	000019	2013	1583
2	000020	2013	452
2	000021	2013	747
2	000022	2013	1355
2	000023	2013	910
2	000024	2013	2751
2	000027	2013	1030
2	000029	2013	313
2	000030	2013	1557
2	000031	2013	684
2	000032	2013	1046
2	000033	2013	2583
2	000036	2013	13203
2	000038	2013	2064
2	000039	2013	2673
2	000040	2013	23970
2	000041	2013	8947
2	000042	2013	4085
2	000047	2013	698
2	000048	2013	2870
2	000052	2013	4649
2	000053	2013	2375
2	000054	2013	6390
2	000055	2013	5236
2	000057	2013	4099
2	000058	2013	7488
2	000059	2013	1216
2	000061	2013	476
2	000063	2013	1321
2	000065	2013	275
2	000068	2013	3474
2	000071	2013	547
2	000073	2013	1783
2	000074	2013	715
2	000075	2013	345
2	000076	2013	771
2	000077	2013	2394
2	000078	2013	401
2	000080	2013	470

County Number	Station Number	Year	AADT
2	000081	2013	255
2	000083	2013	4216
2	000084	2013	9964
2	000085	2013	16128
2	000086	2013	683
2	000087	2013	578
2	000088	2013	11249
2	000089	2013	7618
2	000090	2013	17683
2	000091	2013	6369
2	000092	2013	810
2	000093	2013	14129
2	000094	2013	3305
2	000096	2013	7998
2	000097	2013	67
2	000098	2013	277
2	000099	2013	431
2	000101	2013	636
2	000102	2013	150
2	000103	2013	1414
2	000104	2013	2436
2	000105	2013	1215
2	000106	2013	3314
2	000107	2013	3340
2	000108	2013	4272
2	000109	2013	2022
2	000110	2013	742
2	000111	2013	3690
2	000112	2013	2376
2	000113	2013	4665
2	000114	2013	1864
2	000115	2013	339
2	000116	2013	2680
2	000117	2013	2922
2	000118	2013	6836
2	000119	2013	2834
2	000120	2013	16677
2	000121	2013	9825
2	000122	2013	130
2	000124	2013	1989
2	000125	2013	1752
2	000126	2013	615
2	000127	2013	3016
2	000128	2013	1469
2	000129	2013	111
2	000130	2013	4115
2	000131	2013	941
2	000132	2013	14524
2	000133	2013	4009
2	000134	2013	10514
2	000135	2013	8143

County Number	Station Number	Year	AADT
2	000137	2013	4695
2	000138	2013	2247
2	000139	2013	107
2	000140	2013	707
2	000141	2013	2767
2	000142	2013	824
2	000144	2013	3972
2	000145	2013	1248
2	000146	2013	316
2	000147	2013	17171
2	000148	2013	13285
2	000149	2013	8764
2	000150	2013	727
2	000151	2013	14376
2	000152	2013	3709
2	000153	2013	2851
2	000154	2013	4337