

**Tennessee Department of Agriculture  
Division of Forestry  
Wildfire Report  
2017 Fall Season**



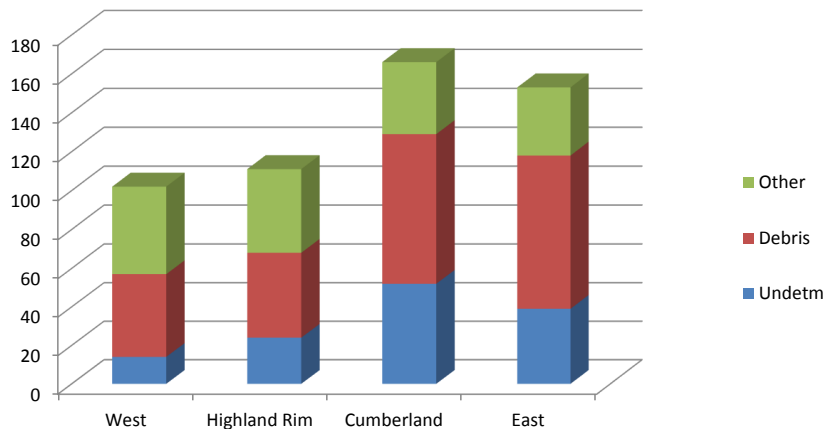
Date of Fires: **11/10-12/2017**  
Date of Report: November 13, 2017

DISTRICT	TOTAL		UNDETM*		DEBRIS		OTHER		Y-T-D TOTAL		Y-T-D UNDETM		Y-T-D DEBRIS		Y-T-D OTHER	
	FIRES	ACRES	FIRES	ACRES	FIRES	ACRES	FIRES	ACRES	FIRES	ACRES	FIRES	ACRES	FIRES	ACRES	FIRES	ACRES
West Tennessee Lexington	0	0	0	0.0	0	0.0	0	0.0	102	695	14	165.0	43	294.0	45	236.0
Highland Rim Burns	0	0	0	0.0	0	0.0	0	0.0	111	700	24	187.6	44	360.1	43	152.5
Cumberland Cookeville	1	1	0	0.0	0	0.0	1	0.5	166	1,925	52	838.3	77	706.6	37	379.0
East Tennessee Knoxville	0	0	0	0.0	0	0.0	0	0.0	153	3,108	39	1,512.8	79	828.2	35	766.6
<b>TOTALS:</b>	<b>1</b>	<b>0.5</b>	<b>0</b>	<b>0.0</b>	<b>0</b>	<b>0.0</b>	<b>1</b>	<b>0.5</b>	<b>532</b>	<b>6,427.4</b>	<b>129</b>	<b>2,703.7</b>	<b>243</b>	<b>2,188.9</b>	<b>160</b>	<b>1,534.1</b>

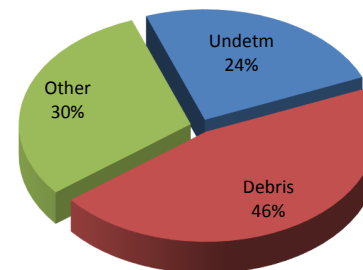
		Rainfall will be light this week, with increasing chances toward the weekend. Temperatures most of the week wil stay at or below normal, keeping the RH values above critical thresholds.			
<b>CD</b>	Fentress Co.: 1 fire @ 0.5 acre (house)				
		<b>District</b>	<b>Ave Fire Size</b>	<b>KBDI</b>	
		<b>WTD</b>	6.8	205	
		<b>HRD</b>	6.3	199	
		<b>CD</b>	11.6	107	
		<b>ETD</b>	20.3	115	
	*Undetermined				

Tennessee Department of Agriculture  
 Division of Forestry  
 Wildfire Charts  
 2017  
 (Year-to-Date Totals)

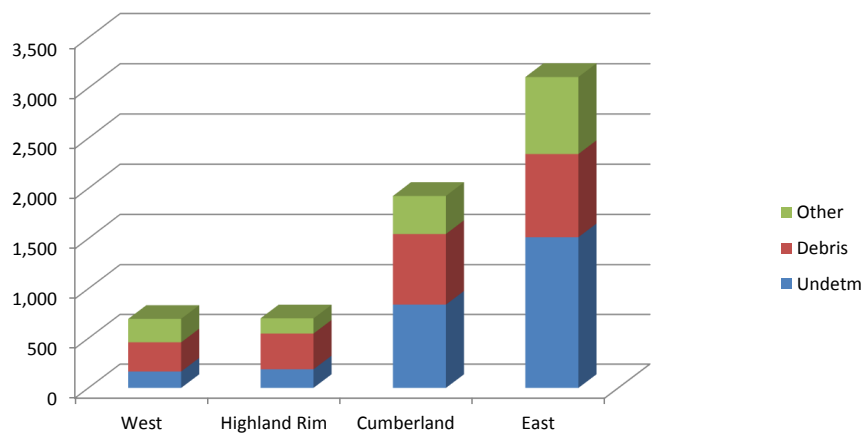
**No. of Fires**



**No. of Fires (State-wide)**



**Acres Burned**



**Acres Burned (State-wide)**

