





## **ANNUAL REPORT ON THE QUALITY OF KEROSENE AND MOTOR FUEL IN TENNESSEE**

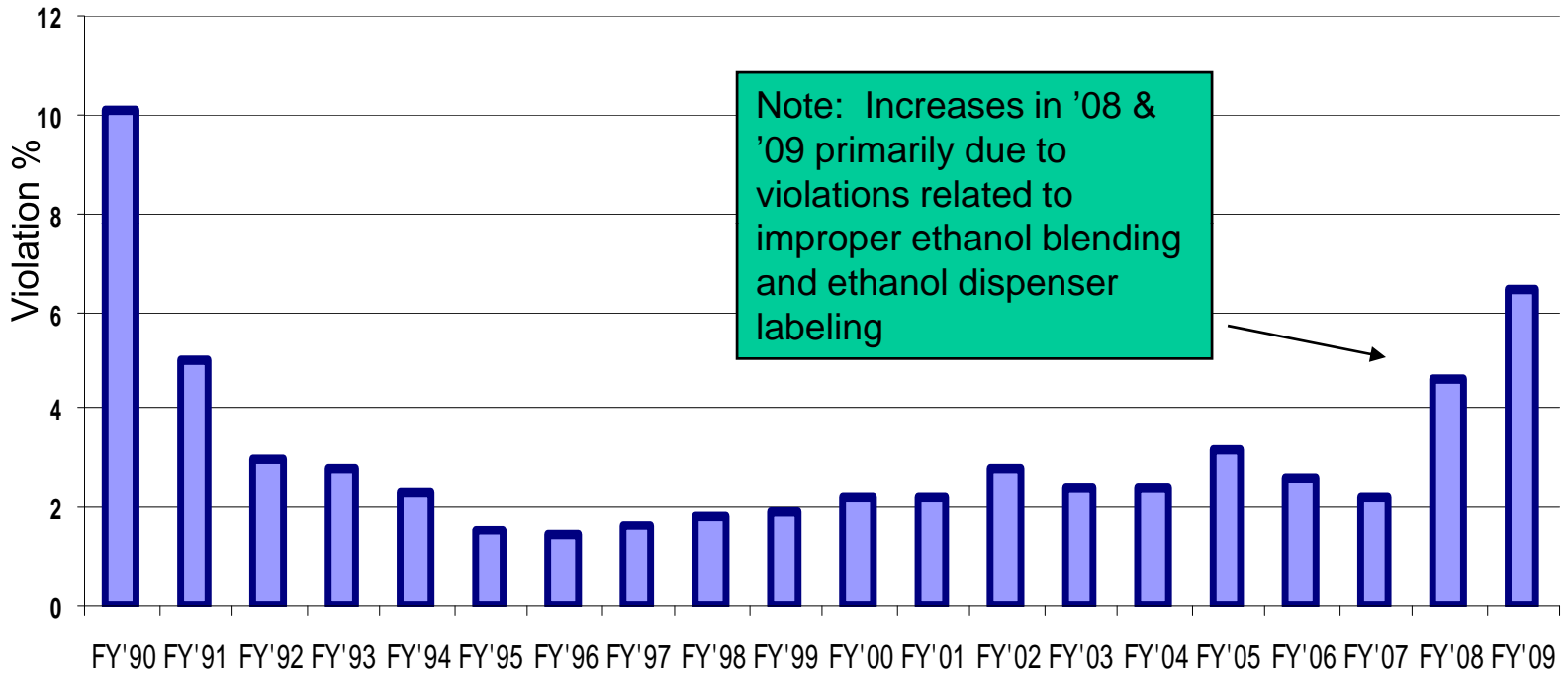
### **TABLE OF CONTENTS**

- I. Effectiveness of Program**
  - a. Violation % Graphs**
  - b. State Wide Violation Graph**
  - c. Gasoline, Diesel, Kerosene Trend Graph**
- II. Consumer Complaints Summary**
- III. Inspection Data**
  - a. State Wide Summary**
  - b. TN Region Summary**
  - c. Product Summary**
  - d. Business Type Summary**
  - e. Inspection Type Summary**
  - f. County Distribution Data**
- IV. Enforcement Summary**

# TENNESSEE DEPARTMENT OF AGRICULTURE

## ANNUAL SAMPLE VIOLATION SUMMARY

All Regulated Products Tested

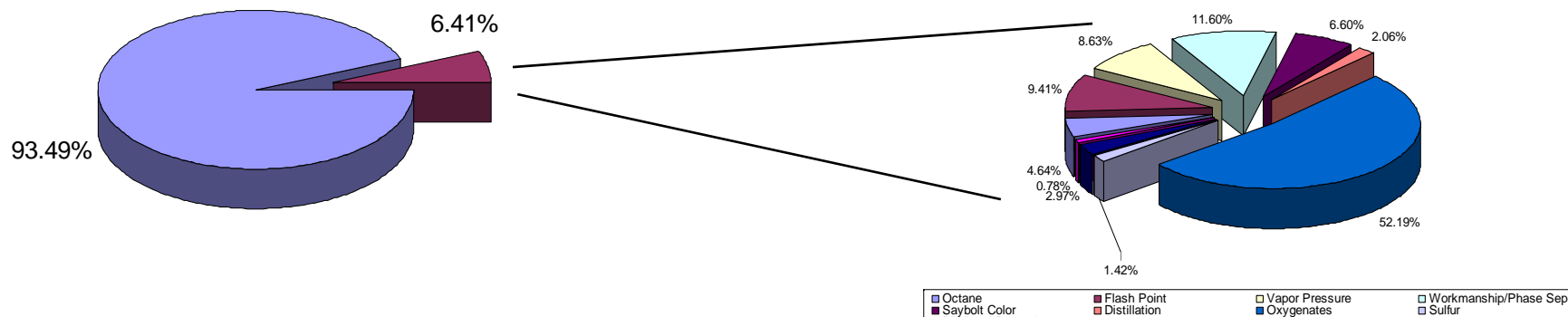


EFFECTIVENESS OF PROGRAM  
REGULATORY SERVICES

# State Wide Violation Summary

## Violation Breakdown

July 1, 2008 - June 30, 2009

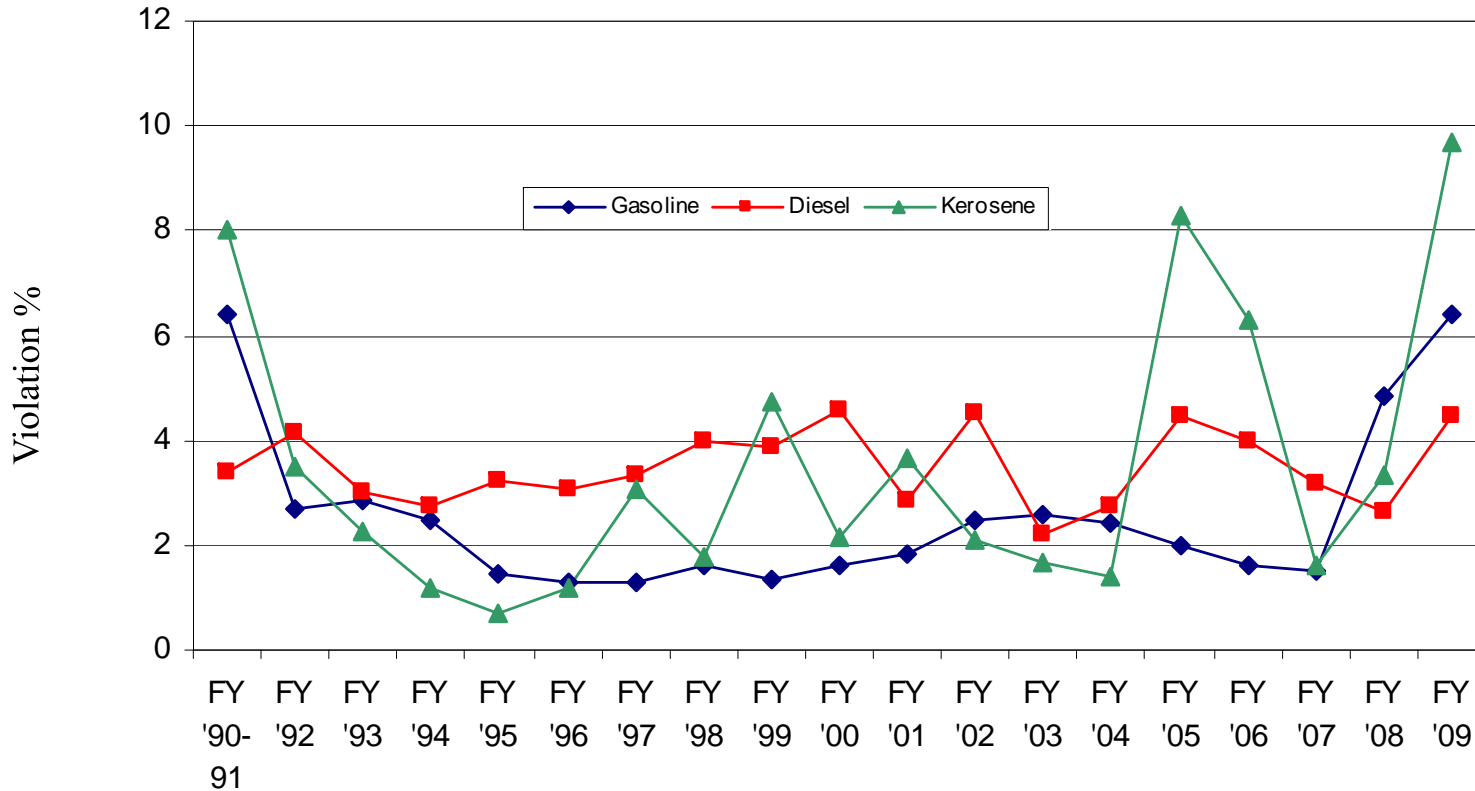


Tennessee Department of Agriculture  
Regulatory Services

# TENNESSEE DEPARTMENT OF AGRICULTURE

## ANNUAL SAMPLE VIOLATION SUMMARY

### Gasoline, Diesel, & Kerosene Breakdown



EFFECTIVENESS OF PROGRAM  
REGULATORY SERVICES



---

**TENNESSEE DEPARTMENT OF AGRICULTURE**

---

**Ken Givens**  
COMMISSIONER

**REGULATORY SERVICES**

**MOTOR FUELS QUALITY PROGRAM  
SUMMARY OF CONSUMER COMPLAINTS RECEIVED FROM  
07/01/2008 – 06/30/2009**

**TOTAL NUMBER OF COMPLAINTS EVALUATED IN TIME FRAME: 98**

**Category Breakdown of Complaints :**

<b>Octane</b>	<b>3</b>
<b>Water</b>	<b>47</b>
<b>Sediment</b>	<b>1</b>
<b>Alcohols</b>	<b>9</b>
<b>Contamination</b>	<b>37</b>
<b>Misc.</b>	<b>1</b>

**The Department maintains a 24 hour toll free line (1-800-OCTANE1) for Consumer Complaints. It is promoted through media publicity and dispenser decals applied by inspectors performing Weights and Measures activities.**

## REPORTING CODE KEY

### Product Codes

AG - Aviation Gasoline  
D - Diesel  
G - Gasoline  
JF - Jet Fuel  
K - Kerosene  
RF - Racing Fuel  
PD - Premium Diesel  
BD - Biodiesel Blending Stock  
BDB - Biodiesel Blend  
LPG - Liquefied Petroleum Gas  
E85 - E-85 Fuel Ethanol  
DFE - Denatured Fuel Ethanol

### Grade Codes

MG - Mid Grade  
MGE - Mid Grade w/ Ethanol  
PU - Premium Unleaded  
PUE - Premium Unleaded w/ Ethanol  
RL - Regular Leaded  
RU - Regular Unleaded  
RUE - Regular Unleaded w/ Ethanol  
1D - No. 1-D Diesel  
2D - No. 2-D Diesel  
2DLS - No. 2-D Low Sulfur  
2D UL - No. 2-D ULSD  
1K - No. 1 Kerosene  
2K - No. 2 Kerosene  
JA - Jet A Turbine Fuel  
80 - 80 Octane  
100 - 100 Octane

### Request

100LL - 100 Low Lead  
BDBS - S500 Biodiesel Blending Stock  
BDBS1(5) - S15 Biodiesel Blending Stock  
B10LS - B10 Biodiesel Low Sulfur  
B20U - B20 Biodiesel ULSD  
B20LS - B20 Biodiesel Low Sulfur  
B5 LS - B5 Biodiesel Low Sulfur  
B5 UL - B5 Biodiesel ULSD  
B5-20 - B5-20 Low Sulfur  
E-85 - E-85 Fuel Ethanol Grade  
SD - Special Duty Propane  
E100 - Denatured Fuel Ethanol Grade

### District Codes

W - West TN  
M - Middle TN  
E - East TN

### Business Type

R - Retailer  
T - Terminal  
A - Airport  
D - Distributor  
M - Marina  
O - Other  
I - Individual

### Inspection Type

R - Routine  
C - Complaint  
F - Follow-up  
O - Office

## Tennessee Department of Agriculture State Wide Violation Analysis Report

PULL DATE ranges from 7/1/2008 TO 6/30/2009

Today: 11/18/2009

<i>Prod Code</i>	<i>Total Samples</i>	<i>Samples in Violation</i>	<i>%</i>	<i>Test Violation Total</i>	<i>Total Volume (Gals)</i>	<i>Total in Violation</i>
AG	24	0	0.00	0	241,631.90	0
BD	25	7	28.00	11	171,308.00	12,782
BDB	49	11	22.45	13	79,093.00	11,325
D	1,692	76	4.49	78	37,588,936.72	180,653
DFE	24	0	0.00	0	10,758,428.00	0
E85	36	8	22.22	10	88,034.00	20,272
FO	2	0	0.00	0	551.00	0
G	5,229	335	6.41	609	94,525,026.50	1,498,033
JF	20	0	0.00	0	2,309,977.00	0
K	557	54	9.69	55	638,421.00	37,061
<b>Total</b>	<b>7,658</b>	<b>491</b>	<b>6.41</b>	<b>776</b>	<b>146,401,407.12</b>	<b>1,760,126</b>

# Tennessee Department of Agriculture State Wide Violation Analysis Report

PULL DATE ranges from 7/1/2008 TO 6/30/2009

Today: 11/18/2009

<i>Prod Code</i>	<i>Total Samples</i>	<i>Samples in Violation</i>	%	<i>Test Violation Total</i>	<i>Total Volume (Gals)</i>	<i>Total in Violation</i>
------------------	----------------------	-----------------------------	---	-----------------------------	----------------------------	---------------------------

## Test Violation Detail Listing

36	Octane	4.64%
73	Flash Point	9.41%
405	Oxygenates	52.19%
67	Vapor Pressure	8.63%
51	Workmanship (Appearance)	6.57%
39	Phase Separation	5.03%
47	Saybolt Color	6.06%
2	Sediment & Water	0.26%
11	Sulfur	1.42%
16	Distillation	2.06%
1	Cetane Index	0.13%
1	Cetane Number	0.13%
2	Acid Number	0.26%
2	Cloud Point	0.26%
2	Phosphorous	0.26%
3	Biodiesel Blend	0.39%
11	Oxidation	1.42%
1	E-85 Hydrocarbons & Aliphatic Ethers	0.13%
1	E85 Acidity	0.13%
1	E85 Gum	0.13%
3	Volatility	0.39%
1	Filtration	0.13%

## Tennessee Department of Agriculture District Violation Analysis Report

ALL DISTRICT VALUES SELECTED.

PULL DATE ranges from 7/1/2008 TO 6/30/2009

Today: 11/19/2009

<i>Dist</i>	<i>Prod Code</i>	<i>Grade</i>	<i>Total Samples</i>	<i>Samples in Violation</i>	<i>%</i>	<i>Test Violation Total</i>	<i>Total Volume (Gals)</i>	<i>Total in Violation</i>
EAST								
AG	100LL		3	0	0.00	0	4,719	0
<b>Subtotal:</b>			<b>3</b>	<b>0</b>	<b>0.00</b>	<b>0</b>	<b>4,719</b>	<b>0</b>
BD	BDBS		5	1	20.00	2	18,113	750
BD	BDBS15		2	0	0.00	0	9,441	0
<b>Subtotal:</b>			<b>7</b>	<b>1</b>	<b>14.29</b>	<b>2</b>	<b>27,554</b>	<b>750</b>
BDB	B20 ULSD		2	1	50.00	1	4,459	1,894
BDB	B5-20		10	1	10.00	1	23,090	1,835
BDB	B5-20 ULSE		4	0	0.00	0	4,423	0
<b>Subtotal:</b>			<b>16</b>	<b>2</b>	<b>12.50</b>	<b>2</b>	<b>31,972</b>	<b>3,729</b>
D	2D		51	2	3.92	2	166,663	3,337
D	2D LS		125	8	6.40	8	4,967,473	10,721
D	2D ULSD 1:		614	24	3.91	24	12,643,908	72,462
<b>Subtotal:</b>			<b>790</b>	<b>34</b>	<b>4.30</b>	<b>34</b>	<b>17,778,044</b>	<b>86,520</b>
DFE	E100		3	0	0.00	0	1,551,138	0
<b>Subtotal:</b>			<b>3</b>	<b>0</b>	<b>0.00</b>	<b>0</b>	<b>1,551,138</b>	<b>0</b>
E85	E-85		12	3	25.00	4	26,021	3,893
<b>Subtotal:</b>			<b>12</b>	<b>3</b>	<b>25.00</b>	<b>4</b>	<b>26,021</b>	<b>3,893</b>
FO	1		1	0	0.00	0	324	0
<b>Subtotal:</b>			<b>1</b>	<b>0</b>	<b>0.00</b>	<b>0</b>	<b>324</b>	<b>0</b>
G	MG		539	33	6.12	54	1,366,633	72,088
G	PU		610	49	8.03	81	11,417,123	114,985
G	RU		1,220	86	7.05	173	23,854,577	372,908
G	RU BS		4	0	0.00	0	7,167,804	0
<b>Subtotal:</b>			<b>2,373</b>	<b>168</b>	<b>7.08</b>	<b>308</b>	<b>43,806,137</b>	<b>559,981</b>

## Tennessee Department of Agriculture District Violation Analysis Report

ALL DISTRICT VALUES SELECTED.

PULL DATE ranges from 7/1/2008 TO 6/30/2009

Today: 11/19/2009

<i>Dist</i>	<i>Prod Code</i>	<i>Grade</i>	<i>Total Samples</i>	<i>Samples in Violation</i>	<i>%</i>	<i>Test Violation Total</i>	<i>Total Volume (Gals)</i>	<i>Total in Violation</i>
	JF	JA	3	0	0.00	0	245,822	0
	<b>Subtotal:</b>		<b>3</b>	<b>0</b>	<b>0.00</b>	<b>0</b>	<b>245,822</b>	<b>0</b>
	K	1K	254	33	12.99	34	225,652	24,866
	<b>Subtotal:</b>		<b>254</b>	<b>33</b>	<b>12.99</b>	<b>34</b>	<b>225,652</b>	<b>24,866</b>
	<b>Total:</b>		<b>3,462</b>	<b>241</b>	<b>6.96</b>	<b>384</b>	<b>63,697,383</b>	<b>679,739</b>

### Total Violation Detail Listing

17	Octane	4.43%
29	Flash Point	7.55%
213	Oxygenates	55.47%
30	Vapor Pressure	7.81%
29	Workmanship (Appearance)	7.55%
21	Phase Separation	5.47%
30	Saybolt Color	7.81%
1	Sediment & Water	0.26%
8	Sulfur	2.08%
3	Distillation	0.78%
1	Phosphorous	0.26%
2	Oxidation	0.52%

## Tennessee Department of Agriculture District Violation Analysis Report

ALL DISTRICT VALUES SELECTED.

PULL DATE ranges from 7/1/2008 TO 6/30/2009

Today: 11/19/2009

<i>Dist</i>	<i>Prod Code</i>	<i>Grade</i>	<i>Total Samples</i>	<i>Samples in Violation</i>	<i>%</i>	<i>Test Violation Total</i>	<i>Total Volume (Gals)</i>	<i>Total in Violation</i>
MIDDLE								
AG	100LL		14	0	0.00	0	86,685	0
<b>Subtotal:</b>			<b>14</b>	<b>0</b>	<b>0.00</b>	<b>0</b>	<b>86,685</b>	<b>0</b>
BD	BDBS		6	3	50.00	4	24,532	6,712
BD	BDBS15		1	0	0.00	0	4,300	0
<b>Subtotal:</b>			<b>7</b>	<b>3</b>	<b>42.86</b>	<b>4</b>	<b>28,832</b>	<b>6,712</b>
BDB	B20 ULSD		17	6	35.29	8	19,499	5,266
BDB	B20LS		1	0	0.00	0	2,999	0
BDB	B5-20		11	1	9.09	1	20,059	1,261
<b>Subtotal:</b>			<b>29</b>	<b>7</b>	<b>24.14</b>	<b>9</b>	<b>42,557</b>	<b>6,527</b>
D	2D		52	3	5.77	3	134,697	2,860
D	2D LS		82	2	2.44	2	384,401	1,263
D	2D ULSD 1:		479	20	4.18	22	8,267,215	28,364
<b>Subtotal:</b>			<b>613</b>	<b>25</b>	<b>4.08</b>	<b>27</b>	<b>8,786,314</b>	<b>32,487</b>
DFE	E100		8	0	0.00	0	1,889,293	0
<b>Subtotal:</b>			<b>8</b>	<b>0</b>	<b>0.00</b>	<b>0</b>	<b>1,889,293</b>	<b>0</b>
E85	E-85		23	4	17.39	4	54,499	8,865
<b>Subtotal:</b>			<b>23</b>	<b>4</b>	<b>17.39</b>	<b>4</b>	<b>54,499</b>	<b>8,865</b>
FO	1		1	0	0.00	0	227	0
<b>Subtotal:</b>			<b>1</b>	<b>0</b>	<b>0.00</b>	<b>0</b>	<b>227</b>	<b>0</b>
G	MG		427	36	8.43	60	1,043,159	90,851
G	PU		490	48	9.80	84	4,299,362	136,045
G	RU		738	33	4.47	67	12,269,604	166,148
G	RU BS		2	0	0.00	0	2,189,160	0
<b>Subtotal:</b>			<b>1,657</b>	<b>117</b>	<b>7.06</b>	<b>211</b>	<b>19,801,284</b>	<b>393,044</b>

# Tennessee Department of Agriculture District Violation Analysis Report

ALL DISTRICT VALUES SELECTED.

PULL DATE ranges from 7/1/2008 TO 6/30/2009

Today: 11/19/2009

<i>Dist</i>	<i>Prod Code</i>	<i>Grade</i>	<i>Total Samples</i>	<i>Samples in Violation</i>	<i>%</i>	<i>Test Violation Total</i>	<i>Total Volume (Gals)</i>	<i>Total in Violation</i>
	JF	JA	11	0	0.00	0	64,318	0
		<b>Subtotal:</b>	<b>11</b>	<b>0</b>	<b>0.00</b>	<b>0</b>	<b>64,318</b>	<b>0</b>
	K	1K	248	18	7.26	18	376,394	11,209
		<b>Subtotal:</b>	<b>248</b>	<b>18</b>	<b>7.26</b>	<b>18</b>	<b>376,394</b>	<b>11,209</b>
		<b>Total:</b>	<b>2,611</b>	<b>174</b>	<b>6.66</b>	<b>273</b>	<b>31,130,403</b>	<b>458,844</b>

## Total Violation Detail Listing

14	Octane	5.13%
26	Flash Point	9.52%
136	Oxygenates	49.82%
26	Vapor Pressure	9.52%
17	Workmanship (Appearance)	6.23%
13	Phase Separation	4.76%
15	Saybolt Color	5.49%
1	Sediment & Water	0.37%
2	Sulfur	0.73%
5	Distillation	1.83%
1	Cetane Index	0.37%
2	Acid Number	0.73%
1	Cloud Point	0.37%
2	Biodiesel Blend	0.73%
8	Oxidation	2.93%
1	E85 Gum	0.37%
3	Volatility	1.10%

## Tennessee Department of Agriculture District Violation Analysis Report

ALL DISTRICT VALUES SELECTED.

PULL DATE ranges from 7/1/2008 TO 6/30/2009

Today: 11/19/2009

<i>Dist</i>	<i>Prod Code</i>	<i>Grade</i>	<i>Total Samples</i>	<i>Samples in Violation</i>	<i>%</i>	<i>Test Violation Total</i>	<i>Total Volume (Gals)</i>	<i>Total in Violation</i>
WEST								
AG	100LL		7	0	0.00	0	150,228	0
	<b>Subtotal:</b>		<b>7</b>	<b>0</b>	<b>0.00</b>	<b>0</b>	<b>150,228</b>	<b>0</b>
BD	BDBS		11	3	27.27	5	114,922	5,320
	<b>Subtotal:</b>		<b>11</b>	<b>3</b>	<b>27.27</b>	<b>5</b>	<b>114,922</b>	<b>5,320</b>
BDB	B20 ULSD		3	1	33.33	1	4,564	1,069
BDB	B5-20		1	1	100.00	1	0	0
	<b>Subtotal:</b>		<b>4</b>	<b>2</b>	<b>50.00</b>	<b>2</b>	<b>4,564</b>	<b>1,069</b>
D	2D		14	1	7.14	1	575,808	3,062
D	2D LS		18	0	0.00	0	539,037	0
D	2D ULSD 1:		257	16	6.23	16	9,909,734	58,584
	<b>Subtotal:</b>		<b>289</b>	<b>17</b>	<b>5.88</b>	<b>17</b>	<b>11,024,579</b>	<b>61,646</b>
DFE	E100		13	0	0.00	0	7,317,997	0
	<b>Subtotal:</b>		<b>13</b>	<b>0</b>	<b>0.00</b>	<b>0</b>	<b>7,317,997</b>	<b>0</b>
E85	E-85		1	1	100.00	2	7,514	7,514
	<b>Subtotal:</b>		<b>1</b>	<b>1</b>	<b>100.00</b>	<b>2</b>	<b>7,514</b>	<b>7,514</b>
G	MG		266	12	4.51	18	668,625	32,868
G	PU		364	15	4.12	28	7,892,135	436,764
G	PU BS		2	0	0.00	0	921,828	0
G	RU		565	23	4.07	44	18,324,976	75,376
G	RU BS		2	0	0.00	0	3,110,041	0
	<b>Subtotal:</b>		<b>1,199</b>	<b>50</b>	<b>4.17</b>	<b>90</b>	<b>30,917,605</b>	<b>545,008</b>
JF	JA		6	0	0.00	0	1,999,837	0
	<b>Subtotal:</b>		<b>6</b>	<b>0</b>	<b>0.00</b>	<b>0</b>	<b>1,999,837</b>	<b>0</b>
K	1K		55	3	5.45	3	36,375	986

# Tennessee Department of Agriculture District Violation Analysis Report

ALL DISTRICT VALUES SELECTED.

PULL DATE ranges from 7/1/2008 TO 6/30/2009

Today: 11/19/2009

<i>Dist</i>	<i>Prod Code</i>	<i>Grade</i>	<i>Total Samples</i>	<i>Samples in Violation</i>	<i>%</i>	<i>Test Violation Total</i>	<i>Total Volume (Gals)</i>	<i>Total in Violation</i>
<b>Subtotal:</b>			<b>55</b>	<b>3</b>	<b>5.45</b>	<b>3</b>	<b>36,375</b>	<b>986</b>
<b>Total:</b>			<b>1,585</b>	<b>76</b>	<b>4.79</b>	<b>119</b>	<b>51,573,621</b>	<b>621,543</b>

## Total Violation Detail Listing

5	Octane	4.20%
18	Flash Point	15.13%
56	Oxygenates	47.06%
11	Vapor Pressure	9.24%
5	Workmanship (Appearance)	4.20%
5	Phase Separation	4.20%
2	Saybolt Color	1.68%
1	Sulfur	0.84%
8	Distillation	6.72%
1	Cetane Number	0.84%
1	Cloud Point	0.84%
1	Phosphorous	0.84%
1	Biodiesel Blend	0.84%
1	Oxidation	0.84%
1	E-85 Hydrocarbons & Aliphatic Ethers	0.84%
1	E85 Acidity	0.84%
1	Filtration	0.84%

## Tennessee Department of Agriculture Product Violation Analysis Report

PULL DATE ranges from 7/1/2008 TO 6/30/2009

Today: 11/18/2009

<i>Prod</i>	<i>Grade</i>	<i>Total Samples</i>	<i>Samples in Violation</i>	<i>%</i>	<i>Test Violation Total</i>	<i>Total Volume (Gals)</i>	<i>Total in Violation</i>
Aviation Gasoline	100LL	24	0	0.00	0	241,631.90	0
<b>Subtotal:</b>		<b>24</b>	<b>0</b>	<b>0.00</b>	<b>0</b>	<b>241,631.90</b>	<b>0</b>

# Tennessee Department of Agriculture Product Violation Analysis Report

PULL DATE ranges from 7/1/2008 TO 6/30/2009

Today: 11/18/2009

<i>Prod</i>	<i>Grade</i>	<i>Total Samples</i>	<i>Samples in Violation</i>	<i>%</i>	<i>Test Violation Total</i>	<i>Total Volume (Gals)</i>	<i>Total in Violation</i>
Biodiesel							
	BDBS	22	7	31.82	11	157,567.00	12,782
	BDBS1	3	0	0.00	0	13,741.00	0
<b>Subtotal:</b>		<b>25</b>	<b>7</b>	<b>28.00</b>	<b>11</b>	<b>171,308.00</b>	<b>12,782</b>

## Test Violation Detail Listing

1	Flash Point	9.09%
1	Cetane Number	9.09%
1	Acid Number	9.09%
2	Phosphorous	18.18%
5	Oxidation	45.45%
1	Filtration	9.09%

## Tennessee Department of Agriculture Product Violation Analysis Report

PULL DATE ranges from 7/1/2008 TO 6/30/2009

Today: 11/18/2009

<i>Prod</i>	<i>Grade</i>	<i>Total Samples</i>	<i>Samples in Violation</i>	<i>%</i>	<i>Test Violation Total</i>	<i>Total Volume (Gals)</i>	<i>Total in Violation</i>
Biodiesel Blend							
	B20 U	22	8	36.36	10	28,522.00	8,229
	B20LS	1	0	0.00	0	2,999.00	0
	B5-20	26	3	11.54	3	47,572.00	3,096
<b>Subtotal:</b>		<b>49</b>	<b>11</b>	<b>22.45</b>	<b>13</b>	<b>79,093.00</b>	<b>11,325</b>

### Test Violation Detail Listing

1	Flash Point	7.69%
1	Acid Number	7.69%
2	Cloud Point	15.38%
3	Biodiesel Blend	23.08%
6	Oxidation	46.15%

# Tennessee Department of Agriculture Product Violation Analysis Report

PULL DATE ranges from 7/1/2008 TO 6/30/2009

Today: 11/18/2009

<i>Prod</i>	<i>Grade</i>	<i>Total Samples</i>	<i>Samples in Violation</i>	<i>%</i>	<i>Test Violation Total</i>	<i>Total Volume (Gals)</i>	<i>Total in Violation</i>
Diesel	2D	117	6	5.13	6	877,168.00	9,259
	2D LS	225	10	4.44	10	5,890,911.40	11,984
	2D UL	1,350	60	4.44	62	30,820,857.32	159,410
<b>Subtotal:</b>		<b>1,692</b>	<b>76</b>	<b>4.49</b>	<b>78</b>	<b>37,588,936.72</b>	<b>180,653</b>

## Test Violation Detail Listing

66	Flash Point	84.62%
1	Sediment & Water	1.28%
10	Sulfur	12.82%
1	Cetane Index	1.28%

## Tennessee Department of Agriculture Product Violation Analysis Report

PULL DATE ranges from 7/1/2008 TO 6/30/2009

Today: 11/18/2009

<i>Prod</i>	<i>Grade</i>	<i>Total Samples</i>	<i>Samples in Violation</i>	<i>%</i>	<i>Test Violation Total</i>	<i>Total Volume (Gals)</i>	<i>Total in Violation</i>
Denat. Fuel EtOH	E100	24	0	0.00	0	10,758,428.00	0
<b>Subtotal:</b>		<b>24</b>	<b>0</b>	<b>0.00</b>	<b>0</b>	<b>10,758,428.00</b>	<b>0</b>

# Tennessee Department of Agriculture Product Violation Analysis Report

PULL DATE ranges from 7/1/2008 TO 6/30/2009

Today: 11/18/2009

<i>Prod</i>	<i>Grade</i>	<i>Total Samples</i>	<i>Samples in Violation</i>	<i>%</i>	<i>Test Violation Total</i>	<i>Total Volume (Gals)</i>	<i>Total in Violation</i>
E-85 Fuel Ethanol	E-85	36	8	22.22	10	88,034.00	20,272
<b>Subtotal:</b>		<b>36</b>	<b>8</b>	<b>22.22</b>	<b>10</b>	<b>88,034.00</b>	<b>20,272</b>

---

## Test Violation Detail Listing

---

1	Oxygenates	10.00%
6	Vapor Pressure	60.00%
1	E-85 Hydrocarbons & Aliphatic Ethers	10.00%
1	E85 Acidity	10.00%
1	E85 Gum	10.00%

## Tennessee Department of Agriculture Product Violation Analysis Report

PULL DATE ranges from 7/1/2008 TO 6/30/2009

Today: 11/18/2009

<i>Prod</i>	<i>Grade</i>	<i>Total Samples</i>	<i>Samples in Violation</i>	<i>%</i>	<i>Test Violation Total</i>	<i>Total Volume (Gals)</i>	<i>Total in Violation</i>
Fuel Oils	1	2	0	0.00	0	551.00	0
<b>Subtotal:</b>		<b>2</b>	<b>0</b>	<b>0.00</b>	<b>0</b>	<b>551.00</b>	<b>0</b>

# Tennessee Department of Agriculture Product Violation Analysis Report

PULL DATE ranges from 7/1/2008 TO 6/30/2009

Today: 11/18/2009

<i>Prod</i>	<i>Grade</i>	<i>Total Samples</i>	<i>Samples in Violation</i>	<i>%</i>	<i>Test Violation Total</i>	<i>Total Volume (Gals)</i>	<i>Total in Violation</i>
Gasoline							
	MG	1,232	81	6.57	132	3,078,416.80	195,807
	PU	1,464	112	7.65	193	23,608,620.28	687,794
	PU BS	2	0	0.00	0	921,828.00	0
	RU	2,523	142	5.63	284	54,449,156.42	614,432
	RU BS	8	0	0.00	0	12,467,005.00	0
<b>Subtotal:</b>		<b>5,229</b>	<b>335</b>	<b>6.41</b>	<b>609</b>	<b>94,525,026.50</b>	<b>1,498,033</b>

## Test Violation Detail Listing

36	Octane	5.91%
404	Oxygenates	66.34%
61	Vapor Pressure	10.02%
51	Workmanship (Appearance)	8.37%
39	Phase Separation	6.40%
15	Distillation	2.46%
3	Volatility	0.49%

## Tennessee Department of Agriculture Product Violation Analysis Report

PULL DATE ranges from 7/1/2008 TO 6/30/2009

Today: 11/18/2009

<i>Prod</i>	<i>Grade</i>	<i>Total Samples</i>	<i>Samples in Violation</i>	<i>%</i>	<i>Test Violation Total</i>	<i>Total Volume (Gals)</i>	<i>Total in Violation</i>
Jet Fuel	JA	20	0	0.00	0	2,309,977.00	0
<b>Subtotal:</b>		<b>20</b>	<b>0</b>	<b>0.00</b>	<b>0</b>	<b>2,309,977.00</b>	<b>0</b>

# Tennessee Department of Agriculture Product Violation Analysis Report

PULL DATE ranges from 7/1/2008 TO 6/30/2009

Today: 11/18/2009

<i>Prod</i>	<i>Grade</i>	<i>Total Samples</i>	<i>Samples in Violation</i>	<i>%</i>	<i>Test Violation Total</i>	<i>Total Volume (Gals)</i>	<i>Total in Violation</i>
Kerosene	1K	557	54	9.69	55	638,421.00	37,061
<b>Subtotal:</b>		<b>557</b>	<b>54</b>	<b>9.69</b>	<b>55</b>	<b>638,421.00</b>	<b>37,061</b>

---

## Test Violation Detail Listing

---

5	Flash Point	9.09%
47	Saybolt Color	85.45%
1	Sediment & Water	1.82%
1	Sulfur	1.82%
1	Distillation	1.82%

## Tennessee Department of Agriculture Business Type Violation Analysis Report

Data Sorted with All Parameters

PULL DATE ranges from 7/1/2008 TO 6/30/2009

Today: 11/19/2009

<i>Bus Type</i>	<i>Prod Code</i>	<i>Grade</i>	<i>Total Samples</i>	<i>Samples in Violation</i>	<i>%</i>	<i>Test Violation Total</i>	<i>Total Volume (Gals)</i>	<i>Total in Violation</i>
Airport	AG	100LL	20	0	0.00	0	114,343	0
		<b>Subtotal:</b>	<b>20</b>	<b>0</b>	<b>0.00</b>	<b>0</b>	<b>114,343</b>	<b>0</b>
	JF	JA	14	0	0.00	0	79,001	0
		<b>Subtotal:</b>	<b>14</b>	<b>0</b>	<b>0.00</b>	<b>0</b>	<b>79,001</b>	<b>0</b>
		<b>Total:</b>	<b>34</b>	<b>0</b>	<b>0.00</b>	<b>0</b>	<b>193,344</b>	<b>0</b>

# Tennessee Department of Agriculture Business Type Violation Analysis Report

Data Sorted with All Parameters

PULL DATE ranges from 7/1/2008 TO 6/30/2009

Today: 11/19/2009

<i>Bus Type</i>	<i>Prod Code</i>	<i>Grade</i>	<i>Total Samples</i>	<i>Samples in Violation</i>	<i>%</i>	<i>Test Violation Total</i>	<i>Total Volume (Gals)</i>	<i>Total in Violation</i>
Distributor								
	BD	BDBS	7	3	42.86	5	25,635	7,362
	BD	BDBS15	3	0	0.00	0	13,741	0
		<b>Subtotal:</b>	<b>10</b>	<b>3</b>	<b>30.00</b>	<b>5</b>	<b>39,376</b>	<b>7,362</b>
	D	2D	13	1	7.69	1	81,091	3,062
	D	2D LS	14	0	0.00	0	112,881	0
	D	2D ULSD 1!	30	2	6.67	2	224,349	20,204
		<b>Subtotal:</b>	<b>57</b>	<b>3</b>	<b>5.26</b>	<b>3</b>	<b>418,321</b>	<b>23,266</b>
	DFE	E100	2	0	0.00	0	10,118	0
		<b>Subtotal:</b>	<b>2</b>	<b>0</b>	<b>0.00</b>	<b>0</b>	<b>10,118</b>	<b>0</b>
	E85	E-85	1	0	0.00	0	6,160	0
		<b>Subtotal:</b>	<b>1</b>	<b>0</b>	<b>0.00</b>	<b>0</b>	<b>6,160</b>	<b>0</b>
	G	MG	3	0	0.00	0	17,533	0
	G	PU	11	2	18.18	2	22,873	6,282
	G	RU	29	2	6.90	4	174,155	7,503
		<b>Subtotal:</b>	<b>43</b>	<b>4</b>	<b>9.30</b>	<b>6</b>	<b>214,561</b>	<b>13,785</b>
	K	1K	5	1	20.00	1	15,731	3,864
		<b>Subtotal:</b>	<b>5</b>	<b>1</b>	<b>20.00</b>	<b>1</b>	<b>15,731</b>	<b>3,864</b>
		<b>Total:</b>	<b>118</b>	<b>11</b>	<b>9.32</b>	<b>15</b>	<b>704,267</b>	<b>48,277</b>

## Test Violation Detail Listing

4	Flash Point	26.67%
2	Oxygenates	13.33%
2	Vapor Pressure	13.33%
1	Workmanship (Appearance)	6.67%
1	Phase Separation	6.67%
1	Saybolt Color	6.67%
1	Cetane Number	6.67%
1	Phosphorous	6.67%
2	Oxidation	13.33%

# Tennessee Department of Agriculture Business Type Violation Analysis Report

Data Sorted with All Parameters

PULL DATE ranges from 7/1/2008 TO 6/30/2009

Today: 11/19/2009

<i>Bus Type</i>	<i>Prod Code</i>	<i>Grade</i>	<i>Total Samples</i>	<i>Samples in Violation</i>	<i>%</i>	<i>Test Violation Total</i>	<i>Total Volume (Gals)</i>	<i>Total in Violation</i>
Marina								
	D	2D	7	2	28.57	2	14,522	1,133
	D	2D LS	2	0	0.00	0	1,585	0
		<b>Subtotal:</b>	<b>9</b>	<b>2</b>	<b>22.22</b>	<b>2</b>	<b>16,107</b>	<b>1,133</b>
	G	MG	37	2	5.41	2	61,080	1,775
	G	PU	14	1	7.14	1	33,991	1,279
	G	RU	42	5	11.90	9	66,035	8,011
		<b>Subtotal:</b>	<b>93</b>	<b>8</b>	<b>8.60</b>	<b>12</b>	<b>161,106</b>	<b>11,065</b>
	JF	JA	1	0	0.00	0	2,406	0
		<b>Subtotal:</b>	<b>1</b>	<b>0</b>	<b>0.00</b>	<b>0</b>	<b>2,406</b>	<b>0</b>
		<b>Total:</b>	<b>103</b>	<b>10</b>	<b>9.71</b>	<b>14</b>	<b>179,619</b>	<b>12,198</b>

## Test Violation Detail Listing

2	Octane	14.29%
2	Flash Point	14.29%
6	Oxygenates	42.86%
1	Vapor Pressure	7.14%
3	Workmanship (Appearance)	21.43%

# Tennessee Department of Agriculture Business Type Violation Analysis Report

Data Sorted with All Parameters

PULL DATE ranges from 7/1/2008 TO 6/30/2009

Today: 11/19/2009

<i>Bus Type</i>	<i>Prod Code</i>	<i>Grade</i>	<i>Total Samples</i>	<i>Samples in Violation</i>	<i>%</i>	<i>Test Violation Total</i>	<i>Total Volume (Gals)</i>	<i>Total in Violation</i>
Other	BDB	B20 ULSD	1	0	0.00	0	2,930	0
		<b>Subtotal:</b>	<b>1</b>	<b>0</b>	<b>0.00</b>	<b>0</b>	<b>2,930</b>	<b>0</b>
	D	2D ULSD 1!	1	0	0.00	0	1,177	0
		<b>Subtotal:</b>	<b>1</b>	<b>0</b>	<b>0.00</b>	<b>0</b>	<b>1,177</b>	<b>0</b>
	E85	E-85	1	1	100.00	2	7,514	7,514
		<b>Subtotal:</b>	<b>1</b>	<b>1</b>	<b>100.00</b>	<b>2</b>	<b>7,514</b>	<b>7,514</b>
	G	MG	1	0	0.00	0	1,756	0
	G	PU	3	0	0.00	0	7,611	0
	G	RU	1	0	0.00	0	7,194	0
		<b>Subtotal:</b>	<b>5</b>	<b>0</b>	<b>0.00</b>	<b>0</b>	<b>16,561</b>	<b>0</b>
		<b>Total:</b>	<b>8</b>	<b>1</b>	<b>12.50</b>	<b>2</b>	<b>28,182</b>	<b>7,514</b>

## Test Violation Detail Listing

1	E-85 Hydrocarbons & Aliphatic Ethers	50.00%
1	E85 Acidity	50.00%

## Tennessee Department of Agriculture Business Type Violation Analysis Report

Data Sorted with All Parameters

PULL DATE ranges from 7/1/2008 TO 6/30/2009

Today: 11/19/2009

<i>Bus Type</i>	<i>Prod Code</i>	<i>Grade</i>	<i>Total Samples</i>	<i>Samples in Violation</i>	<i>%</i>	<i>Test Violation Total</i>	<i>Total Volume (Gals)</i>	<i>Total in Violation</i>
Retailer								
	AG	100LL	3	0	0.00	0	11,289	0
		<b>Subtotal:</b>	<b>3</b>	<b>0</b>	<b>0.00</b>	<b>0</b>	<b>11,289</b>	<b>0</b>
	BD	BDBS	4	1	25.00	2	27,337	3,520
		<b>Subtotal:</b>	<b>4</b>	<b>1</b>	<b>25.00</b>	<b>2</b>	<b>27,337</b>	<b>3,520</b>
	BDB	B20 ULSD	21	8	38.10	10	25,592	8,229
	BDB	B20LS	1	0	0.00	0	2,999	0
	BDB	B5-20	22	3	13.64	3	43,149	3,096
	BDB	B5-20 ULSD	4	0	0.00	0	4,423	0
		<b>Subtotal:</b>	<b>48</b>	<b>11</b>	<b>22.92</b>	<b>13</b>	<b>76,163</b>	<b>11,325</b>
	D	2D	95	3	3.16	3	241,141	5,064
	D	2D LS	195	10	5.13	10	613,019	11,984
	D	2D ULSD 1!	1,279	58	4.53	60	4,382,560	139,206
		<b>Subtotal:</b>	<b>1,569</b>	<b>71</b>	<b>4.53</b>	<b>73</b>	<b>5,236,721</b>	<b>156,254</b>
	DFE	E100	1	0	0.00	0	1,400,000	0
		<b>Subtotal:</b>	<b>1</b>	<b>0</b>	<b>0.00</b>	<b>0</b>	<b>1,400,000</b>	<b>0</b>
	E85	E-85	34	7	20.59	8	74,360	12,758
		<b>Subtotal:</b>	<b>34</b>	<b>7</b>	<b>20.59</b>	<b>8</b>	<b>74,360</b>	<b>12,758</b>
	FO	1	2	0	0.00	0	551	0
		<b>Subtotal:</b>	<b>2</b>	<b>0</b>	<b>0.00</b>	<b>0</b>	<b>551</b>	<b>0</b>
	G	MG	1,191	79	6.63	130	2,998,048	194,032
	G	PU	1,393	107	7.68	188	3,429,874	263,903
	G	RU	2,408	135	5.61	271	13,367,862	598,918
		<b>Subtotal:</b>	<b>4,992</b>	<b>321</b>	<b>6.43</b>	<b>589</b>	<b>19,795,785</b>	<b>1,056,853</b>
	JF	JA	1	0	0.00	0	9,745	0
		<b>Subtotal:</b>	<b>1</b>	<b>0</b>	<b>0.00</b>	<b>0</b>	<b>9,745</b>	<b>0</b>
	K	1K	551	53	9.62	54	457,690	33,197

# Tennessee Department of Agriculture Business Type Violation Analysis Report

Data Sorted with All Parameters

PULL DATE ranges from 7/1/2008 TO 6/30/2009

Today: 11/19/2009

<i>Bus Type</i>	<i>Prod Code</i>	<i>Grade</i>	<i>Total Samples</i>	<i>Samples in Violation</i>	<i>%</i>	<i>Test Violation Total</i>	<i>Total Volume (Gals)</i>	<i>Total in Violation</i>
<b>Subtotal:</b>			<b>551</b>	<b>53</b>	<b>9.62</b>	<b>54</b>	<b>457,690</b>	<b>33,197</b>
<b>Total:</b>			<b>7,205</b>	<b>464</b>	<b>6.44</b>	<b>739</b>	<b>27,089,640</b>	<b>1,273,907</b>

## Test Violation Detail Listing

32	Octane	4.33%
67	Flash Point	9.07%
397	Oxygenates	53.72%
64	Vapor Pressure	8.66%
47	Workmanship (Appearance)	6.36%
38	Phase Separation	5.14%
46	Saybolt Color	6.22%
2	Sediment & Water	0.27%
11	Sulfur	1.49%
16	Distillation	2.17%
1	Cetane Index	0.14%
1	Acid Number	0.14%
2	Cloud Point	0.27%
1	Phosphorous	0.14%
3	Biodiesel Blend	0.41%
6	Oxidation	0.81%
1	E85 Gum	0.14%
3	Volatility	0.41%
1	Filtration	0.14%

# Tennessee Department of Agriculture Business Type Violation Analysis Report

Data Sorted with All Parameters

PULL DATE ranges from 7/1/2008 TO 6/30/2009

Today: 11/19/2009

<i>Bus Type</i>	<i>Prod Code</i>	<i>Grade</i>	<i>Total Samples</i>	<i>Samples in Violation</i>	<i>%</i>	<i>Test Violation Total</i>	<i>Total Volume (Gals)</i>	<i>Total in Violation</i>
Terminal	AG	100LL	1	0	0.00	0	116,000	0
	<b>Subtotal:</b>		<b>1</b>	<b>0</b>	<b>0.00</b>	<b>0</b>	<b>116,000</b>	<b>0</b>
	BD	BDBS	11	3	27.27	4	104,595	1,900
	<b>Subtotal:</b>		<b>11</b>	<b>3</b>	<b>27.27</b>	<b>4</b>	<b>104,595</b>	<b>1,900</b>
	D	2D	2	0	0.00	0	540,414	0
	D	2D LS	14	0	0.00	0	5,163,426	0
	D	2D ULSD 1!	40	0	0.00	0	26,212,771	0
	<b>Subtotal:</b>		<b>56</b>	<b>0</b>	<b>0.00</b>	<b>0</b>	<b>31,916,611</b>	<b>0</b>
	DFE	E100	21	0	0.00	0	9,348,310	0
	<b>Subtotal:</b>		<b>21</b>	<b>0</b>	<b>0.00</b>	<b>0</b>	<b>9,348,310</b>	<b>0</b>
	G	PU	43	2	4.65	2	20,114,271	416,330
	G	PU BS	2	0	0.00	0	921,828	0
	G	RU	43	0	0.00	0	40,833,910	0
	G	RU BS	8	0	0.00	0	12,467,005	0
	<b>Subtotal:</b>		<b>96</b>	<b>2</b>	<b>2.08</b>	<b>2</b>	<b>74,337,014</b>	<b>416,330</b>
	JF	JA	4	0	0.00	0	2,218,825	0
	<b>Subtotal:</b>		<b>4</b>	<b>0</b>	<b>0.00</b>	<b>0</b>	<b>2,218,825</b>	<b>0</b>
	K	1K	1	0	0.00	0	165,000	0
	<b>Subtotal:</b>		<b>1</b>	<b>0</b>	<b>0.00</b>	<b>0</b>	<b>165,000</b>	<b>0</b>
	<b>Total:</b>		<b>190</b>	<b>5</b>	<b>2.63</b>	<b>6</b>	<b>118,206,355</b>	<b>418,230</b>

## Test Violation Detail Listing

2	Octane	33.33%
1	Acid Number	16.67%
3	Oxidation	50.00%

# Tennessee Department of Agriculture Inspection Type Violation Analysis Report

PULL DATE ranges from 7/1/2008 TO 6/30/2009

Today : 11/19/2009

<i>Insp Type</i>	<i>Prod Code</i>	<i>Grade</i>	<i>Total Samples</i>	<i>Samples in Violation</i>	<i>%</i>	<i>Test Violation Total</i>	<i>Total Volume (Gals)</i>	<i>Total in Violation</i>
Complaint	BD	BDBS	1	0	0.00	0	16,000	0
<b>Subtotal:</b>			<b>1</b>	<b>0</b>	<b>0.00</b>	<b>0</b>	<b>16,000</b>	<b>0</b>
	D	2D LS	2	0	0.00	0	7,659	0
	D	2D ULSD 1!	15	1	6.67	2	88,731	653
<b>Subtotal:</b>			<b>17</b>	<b>1</b>	<b>5.88</b>	<b>2</b>	<b>96,390</b>	<b>653</b>
	G	MG	13	3	23.08	6	30,852	8,504
	G	PU	22	6	27.27	10	68,856	19,635
	G	RU	44	7	15.91	15	303,275	53,527
<b>Subtotal:</b>			<b>79</b>	<b>16</b>	<b>20.25</b>	<b>31</b>	<b>402,983</b>	<b>81,666</b>
	K	1K	2	0	0.00	0	3,363	0
<b>Subtotal:</b>			<b>2</b>	<b>0</b>	<b>0.00</b>	<b>0</b>	<b>3,363</b>	<b>0</b>
<b>Total:</b>			<b>99</b>	<b>17</b>	<b>17.17</b>	<b>33</b>	<b>518,736</b>	<b>82,319</b>

## Test Violation Detail Listing

1	Octane	3.03%
1	Flash Point	3.03%
16	Oxygenates	48.48%
1	Vapor Pressure	3.03%
7	Workmanship (Appearance)	21.21%
6	Phase Separation	18.18%
1	Cetane Index	3.03%

# Tennessee Department of Agriculture Inspection Type Violation Analysis Report

PULL DATE ranges from 7/1/2008 TO 6/30/2009

Today : 11/19/2009

<i>Insp Type</i>	<i>Prod Code</i>	<i>Grade</i>	<i>Total Samples</i>	<i>Samples in Violation</i>	<i>%</i>	<i>Test Violation Total</i>	<i>Total Volume (Gals)</i>	<i>Total in Violation</i>
Follow-Up	BDB	B20 ULSD	1	0	0.00	0	2,565	0
	BDB	B5-20	1	0	0.00	0	2,480	0
	<b>Subtotal:</b>		<b>2</b>	<b>0</b>	<b>0.00</b>	<b>0</b>	<b>5,045</b>	<b>0</b>
	D	2D LS	8	1	12.50	1	15,424	1,111
	D	2D ULSD 1!	24	6	25.00	6	69,636	17,295
	<b>Subtotal:</b>		<b>32</b>	<b>7</b>	<b>21.88</b>	<b>7</b>	<b>85,060</b>	<b>18,406</b>
	G	MG	16	1	6.25	1	41,006	1,653
	G	PU	30	6	20.00	9	57,601	9,417
	G	RU	24	2	8.33	4	97,665	7,104
	<b>Subtotal:</b>		<b>70</b>	<b>9</b>	<b>12.86</b>	<b>14</b>	<b>196,272</b>	<b>18,174</b>
	K	1K	2	0	0.00	0	847	0
	<b>Subtotal:</b>		<b>2</b>	<b>0</b>	<b>0.00</b>	<b>0</b>	<b>847</b>	<b>0</b>
<b>Total:</b>			<b>106</b>	<b>16</b>	<b>15.09</b>	<b>21</b>	<b>287,224</b>	<b>36,580</b>

## Test Violation Detail Listing

1	Octane	4.76%
7	Flash Point	33.33%
2	Oxygenates	9.52%
3	Vapor Pressure	14.29%
4	Workmanship (Appearance)	19.05%
4	Phase Separation	19.05%

# Tennessee Department of Agriculture Inspection Type Violation Analysis Report

PULL DATE ranges from 7/1/2008 TO 6/30/2009

Today : 11/19/2009

<i>Insp Type</i>	<i>Prod Code</i>	<i>Grade</i>	<i>Total Samples</i>	<i>Samples in Violation</i>	<i>%</i>	<i>Test Violation Total</i>	<i>Total Volume (Gals)</i>	<i>Total in Violation</i>
Office Request								
	BD	BDBS	9	3	33.33	5	81,052	7,062
	BD	BDBS15	1	0	0.00	0	4,300	0
		<b>Subtotal:</b>	<b>10</b>	<b>3</b>	<b>30.00</b>	<b>5</b>	<b>85,352</b>	<b>7,062</b>
	BDB	B20 ULSD	12	4	33.33	6	12,991	3,000
	BDB	B20LS	1	0	0.00	0	2,999	0
	BDB	B5-20	2	0	0.00	0	2,265	0
		<b>Subtotal:</b>	<b>15</b>	<b>4</b>	<b>26.67</b>	<b>6</b>	<b>18,255</b>	<b>3,000</b>
	D	2D	5	1	20.00	1	191,369	2,901
	D	2D ULSD 1!	13	2	15.38	2	5,059,993	2,800
		<b>Subtotal:</b>	<b>18</b>	<b>3</b>	<b>16.67</b>	<b>3</b>	<b>5,251,362</b>	<b>5,701</b>
	DFE	E100	4	0	0.00	0	1,881,721	0
		<b>Subtotal:</b>	<b>4</b>	<b>0</b>	<b>0.00</b>	<b>0</b>	<b>1,881,721</b>	<b>0</b>
	E85	E-85	6	2	33.33	3	16,603	10,922
		<b>Subtotal:</b>	<b>6</b>	<b>2</b>	<b>33.33</b>	<b>3</b>	<b>16,603</b>	<b>10,922</b>
	G	MG	3	0	0.00	0	16,728	0
	G	PU	9	0	0.00	0	1,911,503	0
	G	RU	21	2	9.52	2	6,910,531	7,564
	G	RU BS	2	0	0.00	0	2,794,092	0
		<b>Subtotal:</b>	<b>35</b>	<b>2</b>	<b>5.71</b>	<b>2</b>	<b>11,632,854</b>	<b>7,564</b>
	K	1K	1	0	0.00	0	863	0

# Tennessee Department of Agriculture Inspection Type Violation Analysis Report

PULL DATE ranges from 7/1/2008 TO 6/30/2009

Today : 11/19/2009

<i>Insp Type</i>	<i>Prod Code</i>	<i>Grade</i>	<i>Total Samples</i>	<i>Samples in Violation</i>	<i>%</i>	<i>Test Violation Total</i>	<i>Total Volume (Gals)</i>	<i>Total in Violation</i>
<b>Subtotal:</b>			1	0	0.00	0	863	0
<b>Total:</b>			89	14	15.73	19	18,887,010	34,249

## Test Violation Detail Listing

3	Flash Point	15.79%
1	Vapor Pressure	5.26%
2	Workmanship (Appearance)	10.53%
2	Acid Number	10.53%
1	Cloud Point	5.26%
1	Phosphorous	5.26%
1	Biodiesel Blend	5.26%
6	Oxidation	31.58%
1	E-85 Hydrocarbons & Aliphatic Ethers	5.26%
1	E85 Acidity	5.26%

# Tennessee Department of Agriculture Inspection Type Violation Analysis Report

PULL DATE ranges from 7/1/2008 TO 6/30/2009

Today : 11/19/2009

<i>Insp Type</i>	<i>Prod Code</i>	<i>Grade</i>	<i>Total Samples</i>	<i>Samples in Violation</i>	<i>%</i>	<i>Test Violation Total</i>	<i>Total Volume (Gals)</i>	<i>Total in Violation</i>
Random	AG	100LL	24	0	0.00	0	241,632	0
	<b>Subtotal:</b>		<b>24</b>	<b>0</b>	<b>0.00</b>	<b>0</b>	<b>241,632</b>	<b>0</b>
	BD	BDBS	12	4	33.33	6	60,515	5,720
	BD	BDBS15	2	0	0.00	0	9,441	0
	<b>Subtotal:</b>		<b>14</b>	<b>4</b>	<b>28.57</b>	<b>6</b>	<b>69,956</b>	<b>5,720</b>
	BDB	B20 ULSD	9	4	44.44	4	12,966	5,229
	BDB	B5-20	19	3	15.79	3	38,404	3,096
	BDB	B5-20 ULSD	4	0	0.00	0	4,423	0
	<b>Subtotal:</b>		<b>32</b>	<b>7</b>	<b>21.88</b>	<b>7</b>	<b>55,793</b>	<b>8,325</b>
	D	2D	112	5	4.46	5	685,799	6,358
	D	2D LS	215	9	4.19	9	5,867,828	10,873
	D	2D ULSD 1!	1,298	51	3.93	52	25,602,497	138,662
	<b>Subtotal:</b>		<b>1625</b>	<b>65</b>	<b>4.00</b>	<b>66</b>	<b>32,156,125</b>	<b>155,893</b>
	DFE	E100	20	0	0.00	0	8,876,707	0
	<b>Subtotal:</b>		<b>20</b>	<b>0</b>	<b>0.00</b>	<b>0</b>	<b>8,876,707</b>	<b>0</b>
	E85	E-85	30	6	20.00	7	71,431	9,350
	<b>Subtotal:</b>		<b>30</b>	<b>6</b>	<b>20.00</b>	<b>7</b>	<b>71,431</b>	<b>9,350</b>
	FO	1	2	0	0.00	0	551	0
	<b>Subtotal:</b>		<b>2</b>	<b>0</b>	<b>0.00</b>	<b>0</b>	<b>551</b>	<b>0</b>
	G	MG	1,200	77	6.42	125	2,989,831	185,650

# Tennessee Department of Agriculture Inspection Type Violation Analysis Report

PULL DATE ranges from 7/1/2008 TO 6/30/2009

Today : 11/19/2009

<i>Insp Type</i>	<i>Prod Code</i>	<i>Grade</i>	<i>Total Samples</i>	<i>Samples in Violation</i>	<i>%</i>	<i>Test Violation Total</i>	<i>Total Volume (Gals)</i>	<i>Total in Violation</i>
	G	PU	1,403	100	7.13	174	21,570,660	658,742
	G	PU BS	2	0	0.00	0	921,828	0
	G	RU	2,434	131	5.38	263	47,137,685	546,237
	G	RU BS	6	0	0.00	0	9,672,913	0
<b>Subtotal:</b>			<b>5045</b>	<b>308</b>	<b>6.11</b>	<b>562</b>	<b>82,292,918</b>	<b>1,390,629</b>
	JF	JA	20	0	0.00	0	2,309,977	0
<b>Subtotal:</b>			<b>20</b>	<b>0</b>	<b>0.00</b>	<b>0</b>	<b>2,309,977</b>	<b>0</b>
	K	1K	552	54	9.78	55	633,348	37,061
<b>Subtotal:</b>			<b>552</b>	<b>54</b>	<b>9.78</b>	<b>55</b>	<b>633,348</b>	<b>37,061</b>
<b>Total:</b>			<b>7364</b>	<b>444</b>	<b>6.03</b>	<b>703</b>	<b>126,708,437</b>	<b>1,606,978</b>

## Test Violation Detail Listing

34	Octane	4.84%
62	Flash Point	8.82%
387	Oxygenates	55.05%
62	Vapor Pressure	8.82%
38	Workmanship (Appearance)	5.41%
29	Phase Separation	4.13%
47	Saybolt Color	6.69%
2	Sediment & Water	0.28%
11	Sulfur	1.56%
16	Distillation	2.28%
1	Cetane Number	0.14%
1	Cloud Point	0.14%
1	Phosphorous	0.14%
2	Biodiesel Blend	0.28%
5	Oxidation	0.71%
1	E85 Gum	0.14%
3	Volatility	0.43%
1	Filtration	0.14%

## Tennessee Department of Agriculture County Summary Short Report

PULL DATE ranges from 7/1/2008 TO 6/30/2009

Today: 11/19/2009

<i>County</i>	<i>Prod Code</i>	<i>Total Samples</i>	<i>Samples in Violation</i>	<i>%</i>	<i>Test Violation Total</i>	<i>Total Volume (Gals)</i>	<i>Total in Violation</i>
<b>Anderson</b>							
	D	23	0	0.00	0	70,766.00	0
	E85	2	0	0.00	0	6,042.00	0
	G	59	4	6.78	6	220,205.00	7,203
	K	5	0	0.00	0	4,769.00	0
	<b>Total:</b>	<b>89</b>	<b>4</b>	<b>4.49</b>	<b>6</b>	<b>301,782.00</b>	<b>7,203</b>
<b>Bedford</b>							
	AG	1	0	0.00	0	8,364.00	0
	BDB	1	1	100.00	1	869.00	869
	D	18	2	11.11	2	57,815.00	3,128
	G	42	0	0.00	0	119,656.00	0
	JF	1	0	0.00	0	9,745.00	0
	K	8	0	0.00	0	3,067.00	0
	<b>Total:</b>	<b>71</b>	<b>3</b>	<b>4.23</b>	<b>3</b>	<b>199,516.00</b>	<b>3,997</b>
<b>Benton</b>							
	AG	1	0	0.00	0	7,301.00	0
	D	7	0	0.00	0	25,472.00	0
	G	20	0	0.00	0	47,419.00	0
	<b>Total:</b>	<b>28</b>	<b>0</b>	<b>0.00</b>	<b>0</b>	<b>80,192.00</b>	<b>0</b>
<b>Bledsoe</b>							
	D	6	0	0.00	0	8,102.00	0
	G	15	3	20.00	4	28,882.00	5,838
	K	1	0	0.00	0	118.00	0
	<b>Total:</b>	<b>22</b>	<b>3</b>	<b>13.64</b>	<b>4</b>	<b>37,102.00</b>	<b>5,838</b>

## Tennessee Department of Agriculture County Summary Short Report

PULL DATE ranges from 7/1/2008 TO 6/30/2009

Today: 11/19/2009

<i>County</i>	<i>Prod Code</i>	<i>Total Samples</i>	<i>Samples in Violation</i>	<i>%</i>	<i>Test Violation Total</i>	<i>Total Volume (Gals)</i>	<i>Total in Violation</i>
<b>Blount</b>							
	BD	4	0	0.00	0	25,504.00	0
	BDB	3	0	0.00	0	4,593.00	0
	D	34	2	5.88	2	71,247.00	2,829
	G	107	5	4.67	9	429,631.00	14,052
	K	18	1	5.56	1	20,706.00	675
	<b>Total:</b>	<b>166</b>	<b>8</b>	<b>4.82</b>	<b>12</b>	<b>551,681.00</b>	<b>17,556</b>
<b>Bradley</b>							
	BDB	2	1	50.00	1	4,441.00	1,894
	D	26	0	0.00	0	66,672.00	0
	G	79	10	12.66	20	260,403.00	41,481
	K	15	2	13.33	2	20,871.00	2,585
	<b>Total:</b>	<b>122</b>	<b>13</b>	<b>10.66</b>	<b>23</b>	<b>352,387.00</b>	<b>45,960</b>
<b>Campbell</b>							
	D	24	2	8.33	2	70,623.00	14,715
	G	46	2	4.35	2	192,630.00	14,440
	K	3	1	33.33	1	3,127.00	582
	<b>Total:</b>	<b>73</b>	<b>5</b>	<b>6.85</b>	<b>5</b>	<b>266,380.00</b>	<b>29,737</b>
<b>Cannon</b>							
	D	5	0	0.00	0	12,927.00	0
	G	13	0	0.00	0	31,108.00	0
	K	2	0	0.00	0	1,746.00	0
	<b>Total:</b>	<b>20</b>	<b>0</b>	<b>0.00</b>	<b>0</b>	<b>45,781.00</b>	<b>0</b>
<b>Carroll</b>							
	AG	1	0	0.00	0	2,739.00	0

## Tennessee Department of Agriculture County Summary Short Report

PULL DATE ranges from 7/1/2008 TO 6/30/2009

Today: 11/19/2009

<i>County</i>	<i>Prod Code</i>	<i>Total Samples</i>	<i>Samples in Violation</i>	<i>%</i>	<i>Test Violation Total</i>	<i>Total Volume (Gals)</i>	<i>Total in Violation</i>
	D	10	0	0.00	0	36,211.00	0
	G	31	2	6.45	3	77,571.00	10,059
	JF	1	0	0.00	0	1,443.00	0
	K	2	0	0.00	0	538.00	0
	<b>Total:</b>	<b>45</b>	<b>2</b>	<b>4.44</b>	<b>3</b>	<b>118,502.00</b>	<b>10,059</b>
<b>Carter</b>							
	D	12	0	0.00	0	24,433.00	0
	G	41	1	2.44	2	144,287.00	4,439
	K	6	0	0.00	0	4,181.00	0
	<b>Total:</b>	<b>59</b>	<b>1</b>	<b>1.69</b>	<b>2</b>	<b>172,901.00</b>	<b>4,439</b>
<b>Cheatham</b>							
	D	23	0	0.00	0	75,081.00	0
	G	36	1	2.78	1	118,739.00	2,800
	K	9	1	11.11	1	8,188.00	600
	<b>Total:</b>	<b>68</b>	<b>2</b>	<b>2.94</b>	<b>2</b>	<b>202,008.00</b>	<b>3,400</b>
<b>Chester</b>							
	D	5	0	0.00	0	17,185.00	0
	G	14	0	0.00	0	24,413.00	0
	K	3	0	0.00	0	2,334.00	0
	<b>Total:</b>	<b>22</b>	<b>0</b>	<b>0.00</b>	<b>0</b>	<b>43,932.00</b>	<b>0</b>
<b>Claiborne</b>							
	D	18	0	0.00	0	28,403.00	0
	G	37	3	8.11	7	89,571.00	3,892
	K	5	2	40.00	2	2,388.00	794

## Tennessee Department of Agriculture County Summary Short Report

PULL DATE ranges from 7/1/2008 TO 6/30/2009

Today: 11/19/2009

<i>County</i>	<i>Prod Code</i>	<i>Total Samples</i>	<i>Samples in Violation</i>	<i>%</i>	<i>Test Violation Total</i>	<i>Total Volume (Gals)</i>	<i>Total in Violation</i>
	<b>Total:</b>	<b>60</b>	<b>5</b>	<b>8.33</b>	<b>9</b>	<b>120,362.00</b>	<b>4,686</b>
<b>Clay</b>	D	5	0	0.00	0	7,355.00	0
	G	16	0	0.00	0	29,804.00	0
	<b>Total:</b>	<b>21</b>	<b>0</b>	<b>0.00</b>	<b>0</b>	<b>37,159.00</b>	<b>0</b>
<b>Cocke</b>	BDB	1	0	0.00	0	1,094.00	0
	D	7	1	14.29	1	20,912.00	375
	G	54	3	5.56	4	223,046.00	9,731
	K	1	1	100.00	1	550.00	550
	<b>Total:</b>	<b>63</b>	<b>5</b>	<b>7.94</b>	<b>6</b>	<b>245,602.00</b>	<b>10,656</b>
<b>Coffee</b>	AG	1	0	0.00	0	1,202.00	0
	BD	3	1	33.33	1	16,720.00	400
	D	20	0	0.00	0	70,519.00	0
	G	57	4	7.02	6	192,460.00	11,829
	JF	1	0	0.00	0	2,384.00	0
	K	12	0	0.00	0	11,136.00	0
	<b>Total:</b>	<b>94</b>	<b>5</b>	<b>5.32</b>	<b>7</b>	<b>294,421.00</b>	<b>12,229</b>
<b>Crockett</b>	D	7	2	28.57	2	40,410.00	14,280
	G	17	1	5.88	4	47,980.00	401
	K	1	0	0.00	0	83.00	0
	<b>Total:</b>	<b>25</b>	<b>3</b>	<b>12.00</b>	<b>6</b>	<b>88,473.00</b>	<b>14,681</b>

## Tennessee Department of Agriculture County Summary Short Report

PULL DATE ranges from 7/1/2008 TO 6/30/2009

Today: 11/19/2009

<i>County</i>	<i>Prod Code</i>	<i>Total Samples</i>	<i>Samples in Violation</i>	<i>%</i>	<i>Test Violation Total</i>	<i>Total Volume (Gals)</i>	<i>Total in Violation</i>
<b>Cumberland</b>							
	D	26	1	3.85	1	89,926.00	1,159
	G	63	6	9.52	10	184,328.00	6,442
	K	9	0	0.00	0	3,995.00	0
	<b>Total:</b>	<b>98</b>	<b>7</b>	<b>7.14</b>	<b>11</b>	<b>278,249.00</b>	<b>7,601</b>
<b>Davidson</b>							
	AG	2	0	0.00	0	7,138.00	0
	BD	2	1	50.00	2	3,000.00	1,500
	BDB	17	3	17.65	5	23,073.00	1,944
	D	120	0	0.00	0	6,989,185.00	0
	DFE	6	0	0.00	0	1,879,175.00	0
	E85	4	0	0.00	0	4,868.00	0
	G	377	33	8.75	64	15,771,865.00	95,530
	JF	2	0	0.00	0	19,906.00	0
	K	35	4	11.43	4	211,531.00	3,563
	<b>Total:</b>	<b>565</b>	<b>41</b>	<b>7.26</b>	<b>75</b>	<b>24,909,741.00</b>	<b>102,537</b>
<b>Decatur</b>							
	D	9	0	0.00	0	26,099.00	0
	G	24	2	8.33	4	49,765.00	991
	K	1	0	0.00	0	0.00	0
	<b>Total:</b>	<b>34</b>	<b>2</b>	<b>5.88</b>	<b>4</b>	<b>75,864.00</b>	<b>991</b>
<b>Dekalb</b>							
	D	8	1	12.50	1	26,628.00	143
	G	31	2	6.45	2	80,722.00	2,694

## Tennessee Department of Agriculture County Summary Short Report

PULL DATE ranges from 7/1/2008 TO 6/30/2009

Today: 11/19/2009

<i>County</i>	<i>Prod Code</i>	<i>Total Samples</i>	<i>Samples in Violation</i>	<i>%</i>	<i>Test Violation Total</i>	<i>Total Volume (Gals)</i>	<i>Total in Violation</i>
	K	3	0	0.00	0	1,059.00	0
	<b>Total:</b>	<b>42</b>	<b>3</b>	<b>7.14</b>	<b>3</b>	<b>108,409.00</b>	<b>2,837</b>
<b>Dickson</b>	AG	1	0	0.00	0	1,800.00	0
	D	27	1	3.70	1	101,647.00	1,279
	G	47	4	8.51	9	108,965.00	5,248
	K	5	0	0.00	0	3,773.00	0
	<b>Total:</b>	<b>80</b>	<b>5</b>	<b>6.25</b>	<b>10</b>	<b>216,185.00</b>	<b>6,527</b>
<b>Dyer</b>	AG	1	0	0.00	0	4,942.00	0
	BD	1	0	0.00	0	1,460.00	0
	D	8	1	12.50	1	33,764.00	3,062
	G	47	0	0.00	0	166,679.00	0
	K	2	0	0.00	0	123.00	0
	<b>Total:</b>	<b>59</b>	<b>1</b>	<b>1.69</b>	<b>1</b>	<b>206,968.00</b>	<b>3,062</b>
<b>Fayette</b>	BD	1	0	0.00	0	11,282.00	0
	BDB	1	1	100.00	1	1,069.00	1,069
	D	12	0	0.00	0	80,211.00	0
	G	30	2	6.67	4	92,028.00	4,175
	K	3	0	0.00	0	2,989.00	0
	<b>Total:</b>	<b>47</b>	<b>3</b>	<b>6.38</b>	<b>5</b>	<b>187,579.00</b>	<b>5,244</b>
<b>Fentress</b>	D	7	0	0.00	0	29,377.00	0

## Tennessee Department of Agriculture County Summary Short Report

PULL DATE ranges from 7/1/2008 TO 6/30/2009

Today: 11/19/2009

<i>County</i>	<i>Prod Code</i>	<i>Total Samples</i>	<i>Samples in Violation</i>	<i>%</i>	<i>Test Violation Total</i>	<i>Total Volume (Gals)</i>	<i>Total in Violation</i>
	G	17	1	5.88	1	50,959.00	1,758
	K	2	1	50.00	1	2,630.00	1,372
	<b>Total:</b>	<b>26</b>	<b>2</b>	<b>7.69</b>	<b>2</b>	<b>82,966.00</b>	<b>3,130</b>
<b>Franklin</b>	AG	2	0	0.00	0	10,246.90	0
	D	15	0	0.00	0	36,019.00	0
	FO	1	0	0.00	0	227.00	0
	G	44	1	2.27	2	140,563.00	325
	JF	1	0	0.00	0	7,350.00	0
	K	4	1	25.00	1	1,844.00	421
	<b>Total:</b>	<b>67</b>	<b>2</b>	<b>2.99</b>	<b>3</b>	<b>196,249.90</b>	<b>746</b>
<b>Gibson</b>	D	16	1	6.25	1	65,835.00	2,836
	G	49	5	10.20	8	179,153.00	22,243
	K	4	1	25.00	1	1,184.00	397
	<b>Total:</b>	<b>69</b>	<b>7</b>	<b>10.14</b>	<b>10</b>	<b>246,172.00</b>	<b>25,476</b>
<b>Giles</b>	AG	1	0	0.00	0	2,500.00	0
	D	15	1	6.67	1	79,783.97	324
	G	37	2	5.41	3	89,900.92	1,593
	JF	1	0	0.00	0	5,000.00	0
	K	8	2	25.00	2	5,394.00	537
	<b>Total:</b>	<b>62</b>	<b>5</b>	<b>8.06</b>	<b>6</b>	<b>182,578.89</b>	<b>2,454</b>

## Tennessee Department of Agriculture County Summary Short Report

PULL DATE ranges from 7/1/2008 TO 6/30/2009

Today: 11/19/2009

<i>County</i>	<i>Prod Code</i>	<i>Total Samples</i>	<i>Samples in Violation</i>	<i>%</i>	<i>Test Violation Total</i>	<i>Total Volume (Gals)</i>	<i>Total in Violation</i>
<b>Grainger</b>							
	D	7	0	0.00	0	7,366.00	0
	G	24	2	8.33	5	58,879.00	3,622
	K	1	0	0.00		360.00	0
	<b>Total:</b>	<b>32</b>	<b>2</b>	<b>6.25</b>	<b>5</b>	<b>66,605.00</b>	<b>3,622</b>
<b>Greene</b>							
	BDB	1	0	0.00	0	1,866.00	0
	D	21	2	9.52	2	36,526.00	1,500
	E85	1	0	0.00	0	1,747.00	0
	G	82	4	4.88	8	339,819.00	13,637
	K	14	3	21.43	3	9,149.00	770
	<b>Total:</b>	<b>119</b>	<b>9</b>	<b>7.56</b>	<b>13</b>	<b>389,107.00</b>	<b>15,907</b>
<b>Grundy</b>							
	D	8	1	12.50	1	6,256.00	297
	G	18	1	5.56	2	34,467.00	1,211
	K	2	0	0.00	0	1,269.00	0
	<b>Total:</b>	<b>28</b>	<b>2</b>	<b>7.14</b>	<b>3</b>	<b>41,992.00</b>	<b>1,508</b>
<b>Hamblen</b>							
	D	26	2	7.69	2	68,287.00	5,278
	G	64	4	6.25	6	248,293.00	21,945
	K	9	0	0.00	0	7,540.00	0
	<b>Total:</b>	<b>99</b>	<b>6</b>	<b>6.06</b>	<b>8</b>	<b>324,120.00</b>	<b>27,223</b>
<b>Hamilton</b>							
	BDB	1	0	0.00	0	5,909.00	0
	D	64	0	0.00	0	2,388,297.00	0

## Tennessee Department of Agriculture County Summary Short Report

PULL DATE ranges from 7/1/2008 TO 6/30/2009

Today: 11/19/2009

<i>County</i>	<i>Prod Code</i>	<i>Total Samples</i>	<i>Samples in Violation</i>	<i>%</i>	<i>Test Violation Total</i>	<i>Total Volume (Gals)</i>	<i>Total in Violation</i>
	G	304	16	5.26	30	5,034,963.10	76,147
	K	28	1	3.57	1	30,721.00	1,015
	<b>Total:</b>	<b>397</b>	<b>17</b>	<b>4.28</b>	<b>31</b>	<b>7,459,890.10</b>	<b>77,162</b>
<b>Hardeman</b>	D	20	1	5.00	1	64,467.00	921
	G	36	2	5.56	3	58,161.00	584
	K	3	1	33.33	1	970.00	480
	<b>Total:</b>	<b>59</b>	<b>4</b>	<b>6.78</b>	<b>5</b>	<b>123,598.00</b>	<b>1,985</b>
<b>Hardin</b>	D	7	1	14.29	1	23,919.00	1,252
	G	37	2	5.41	3	113,077.00	4,068
	K	3	0	0.00	0	860.00	0
	<b>Total:</b>	<b>47</b>	<b>3</b>	<b>6.38</b>	<b>4</b>	<b>137,856.00</b>	<b>5,320</b>
<b>Hawkins</b>	BD	1	0	0.00	0	550.00	0
	D	9	1	11.11	1	22,050.00	1,680
	G	41	5	12.20	16	178,612.00	18,743
	K	5	2	40.00	2	2,968.00	1,344
	<b>Total:</b>	<b>56</b>	<b>8</b>	<b>14.29</b>	<b>19</b>	<b>204,180.00</b>	<b>21,767</b>
<b>Haywood</b>	D	5	0	0.00	0	25,812.00	0
	G	21	2	9.52	4	81,470.00	3,126
	<b>Total:</b>	<b>26</b>	<b>2</b>	<b>7.69</b>	<b>4</b>	<b>107,282.00</b>	<b>3,126</b>
<b>Henderson</b>	D	9	0	0.00	0	71,678.00	0

## Tennessee Department of Agriculture County Summary Short Report

PULL DATE ranges from 7/1/2008 TO 6/30/2009

Today: 11/19/2009

<i>County</i>	<i>Prod Code</i>	<i>Total Samples</i>	<i>Samples in Violation</i>	<i>%</i>	<i>Test Violation Total</i>	<i>Total Volume (Gals)</i>	<i>Total in Violation</i>
	G	28	2	7.14	4	114,529.00	9,545
	K	4	0	0.00	0	6,330.00	0
	<b>Total:</b>	<b>41</b>	<b>2</b>	<b>4.88</b>	<b>4</b>	<b>192,537.00</b>	<b>9,545</b>
<b>Henry</b>	AG	1	0	0.00	0	8,500.00	0
	D	9	0	0.00	0	21,318.00	0
	G	39	5	12.82	6	101,766.00	11,828
	JF	1	0	0.00	0	8,300.00	0
	K	4	0	0.00	0	3,466.00	0
	<b>Total:</b>	<b>54</b>	<b>5</b>	<b>9.26</b>	<b>6</b>	<b>143,350.00</b>	<b>11,828</b>
<b>Hickman</b>	D	3	0	0.00	0	3,736.00	0
	G	23	1	4.35	2	64,154.80	5,048
	K	5	0	0.00	0	2,279.00	0
	<b>Total:</b>	<b>31</b>	<b>1</b>	<b>3.23</b>	<b>2</b>	<b>70,169.80</b>	<b>5,048</b>
<b>Houston</b>	D	6	0	0.00	0	7,586.00	0
	G	10	4	40.00	6	15,088.00	6,782
	<b>Total:</b>	<b>16</b>	<b>4</b>	<b>25.00</b>	<b>6</b>	<b>22,674.00</b>	<b>6,782</b>
<b>Humphreys</b>	D	13	0	0.00	0	71,812.00	0
	G	22	2	9.09	4	65,295.00	4,571
	K	1	0	0.00	0	940.00	0
	<b>Total:</b>	<b>36</b>	<b>2</b>	<b>5.56</b>	<b>4</b>	<b>138,047.00</b>	<b>4,571</b>

## Tennessee Department of Agriculture County Summary Short Report

PULL DATE ranges from 7/1/2008 TO 6/30/2009

Today: 11/19/2009

<i>County</i>	<i>Prod Code</i>	<i>Total Samples</i>	<i>Samples in Violation</i>	<i>%</i>	<i>Test Violation Total</i>	<i>Total Volume (Gals)</i>	<i>Total in Violation</i>
<b>Jackson</b>							
	D	4	0	0.00	0	1,780.00	0
	G	11	0	0.00	0	10,227.00	0
	K	1	0	0.00	0	0.00	0
	<b>Total:</b>	<b>16</b>	<b>0</b>	<b>0.00</b>	<b>0</b>	<b>12,007.00</b>	<b>0</b>
<b>Jefferson</b>							
	D	18	0	0.00	0	61,226.00	0
	G	38	2	5.26	3	155,306.00	1,222
	<b>Total:</b>	<b>56</b>	<b>2</b>	<b>3.57</b>	<b>3</b>	<b>216,532.00</b>	<b>1,222</b>
<b>Johnson</b>							
	AG	1	0	0.00	0	1,794.00	0
	G	3	2	66.67	5	7,481.00	5,077
	<b>Total:</b>	<b>4</b>	<b>2</b>	<b>50.00</b>	<b>5</b>	<b>9,275.00</b>	<b>5,077</b>
<b>Knox</b>							
	D	115	7	6.09	7	13,751,936.00	18,890
	DFE	3	0	0.00	0	1,551,138.00	0
	E85	3	1	33.33	1	9,901.00	569
	G	324	25	7.72	41	32,518,620.00	89,061
	JF	2	0	0.00	0	240,125.00	0
	K	19	2	10.53	2	21,089.00	2,908
	<b>Total:</b>	<b>466</b>	<b>35</b>	<b>7.51</b>	<b>51</b>	<b>48,092,809.00</b>	<b>111,428</b>
<b>Lake</b>							
	D	3	0	0.00	0	4,980.00	0
	G	5	0	0.00	0	9,766.00	0
	K	2	0	0.00	0	512.00	0

## Tennessee Department of Agriculture County Summary Short Report

PULL DATE ranges from 7/1/2008 TO 6/30/2009

Today: 11/19/2009

<i>County</i>	<i>Prod Code</i>	<i>Total Samples</i>	<i>Samples in Violation</i>	<i>%</i>	<i>Test Violation Total</i>	<i>Total Volume (Gals)</i>	<i>Total in Violation</i>
	<b>Total:</b>	<b>10</b>	<b>0</b>	<b>0.00</b>	<b>0</b>	<b>15,258.00</b>	<b>0</b>
<b>Lauderdale</b>	D	6	0	0.00	0	11,890.00	0
	G	29	2	6.90	2	79,939.00	7,686
	K	3	0	0.00	0	1,536.00	0
	<b>Total:</b>	<b>38</b>	<b>2</b>	<b>5.26</b>	<b>2</b>	<b>93,365.00</b>	<b>7,686</b>
<b>Lawrence</b>	AG	1	0	0.00	0	5,312.00	0
	BD	2	1	50.00	1	9,112.00	4,812
	D	23	1	4.35	1	47,999.90	764
	G	54	2	3.70	3	148,632.30	3,937
	JF	1	0	0.00	0	4,462.00	0
	K	6	0	0.00	0	6,027.00	0
	<b>Total:</b>	<b>87</b>	<b>4</b>	<b>4.60</b>	<b>5</b>	<b>221,545.20</b>	<b>9,513</b>
<b>Lewis</b>	AG	1	0	0.00	0	19,037.00	0
	D	6	1	16.67	1	15,430.00	1,117
	G	15	2	13.33	4	37,637.00	2,063
	K	2	0	0.00	0	1,087.00	0
	<b>Total:</b>	<b>24</b>	<b>3</b>	<b>12.50</b>	<b>5</b>	<b>73,191.00</b>	<b>3,180</b>
<b>Lincoln</b>	AG	1	0	0.00	0	17,215.00	0
	D	12	0	0.00	0	33,449.00	0
	G	37	0	0.00	0	92,257.00	0

## Tennessee Department of Agriculture County Summary Short Report

PULL DATE ranges from 7/1/2008 TO 6/30/2009

Today: 11/19/2009

<i>County</i>	<i>Prod Code</i>	<i>Total Samples</i>	<i>Samples in Violation</i>	<i>%</i>	<i>Test Violation Total</i>	<i>Total Volume (Gals)</i>	<i>Total in Violation</i>
	JF	1	0	0.00	0	3,379.00	0
	K	5	0	0.00	0	2,504.00	0
	<b>Total:</b>	<b>56</b>	<b>0</b>	<b>0.00</b>	<b>0</b>	<b>148,804.00</b>	<b>0</b>
<b>Loudon</b>	BDB	2	0	0.00	0	5,185.00	0
	D	24	1	4.17	1	57,387.00	839
	G	58	4	6.90	6	250,739.00	14,495
	K	6	0	0.00	0	3,752.00	0
	<b>Total:</b>	<b>90</b>	<b>5</b>	<b>5.56</b>	<b>7</b>	<b>317,063.00</b>	<b>15,334</b>
<b>McMinn</b>	BD	2	1	50.00	2	1,500.00	750
	BDB	2	0	0.00	0	3,806.00	0
	D	19	1	5.26	1	56,314.00	1,358
	G	62	3	4.84	5	234,224.00	9,789
	K	12	5	41.67	5	7,727.00	2,886
	<b>Total:</b>	<b>97</b>	<b>10</b>	<b>10.31</b>	<b>13</b>	<b>303,571.00</b>	<b>14,783</b>
<b>McNairy</b>	D	8	0	0.00	0	24,097.00	0
	G	27	0	0.00	0	54,561.00	0
	K	3	0	0.00	0	2,309.00	0
	<b>Total:</b>	<b>38</b>	<b>0</b>	<b>0.00</b>	<b>0</b>	<b>80,967.00</b>	<b>0</b>
<b>Macon</b>	D	5	0	0.00	0	18,687.00	0
	G	15	0	0.00	0	47,821.00	0

## Tennessee Department of Agriculture County Summary Short Report

PULL DATE ranges from 7/1/2008 TO 6/30/2009

Today: 11/19/2009

<i>County</i>	<i>Prod Code</i>	<i>Total Samples</i>	<i>Samples in Violation</i>	<i>%</i>	<i>Test Violation Total</i>	<i>Total Volume (Gals)</i>	<i>Total in Violation</i>
	K	4	0	0.00	0	3,940.00	0
	<b>Total:</b>	<b>24</b>	<b>0</b>	<b>0.00</b>	<b>0</b>	<b>70,448.00</b>	<b>0</b>
<b>Madison</b>	AG	1	0	0.00	0	4,746.00	0
	BDB	2	1	50.00	1	2,930.00	0
	D	29	7	24.14	7	176,930.00	21,721
	E85	1	1	100.00	2	7,514.00	7,514
	G	98	7	7.14	15	349,779.00	7,772
	JF	2	0	0.00	0	11,394.00	0
	K	5	0	0.00	0	7,531.00	0
	<b>Total:</b>	<b>138</b>	<b>16</b>	<b>11.59</b>	<b>25</b>	<b>560,824.00</b>	<b>37,007</b>
<b>Marion</b>	AG	1	0	0.00	0	225.00	0
	BDB	2	0	0.00	0	1,650.00	0
	D	13	2	15.38	2	50,154.00	1,669
	G	35	0	0.00	0	95,990.00	0
	K	6	1	16.67	1	5,166.00	1,641
	<b>Total:</b>	<b>57</b>	<b>3</b>	<b>5.26</b>	<b>3</b>	<b>153,185.00</b>	<b>3,310</b>
<b>Marshall</b>	AG	1	0	0.00	0	7,331.00	0
	D	16	2	12.50	2	41,264.00	1,234
	E85	3	1	33.33	1	7,111.00	1,667
	G	38	0	0.00	0	96,225.00	0

## Tennessee Department of Agriculture County Summary Short Report

PULL DATE ranges from 7/1/2008 TO 6/30/2009

Today: 11/19/2009

<i>County</i>	<i>Prod Code</i>	<i>Total Samples</i>	<i>Samples in Violation</i>	<i>%</i>	<i>Test Violation Total</i>	<i>Total Volume (Gals)</i>	<i>Total in Violation</i>
	JF	1	0	0.00	0	1,227.00	0
	K	3	0	0.00	0	2,987.00	0
	<b>Total:</b>	<b>62</b>	<b>3</b>	<b>4.84</b>	<b>3</b>	<b>156,145.00</b>	<b>2,901</b>
<b>Maury</b>	AG	1	0	0.00	0	4,119.00	0
	BDB	3	0	0.00	0	5,264.00	0
	D	20	2	10.00	2	92,582.40	4,075
	E85	4	1	25.00	1	17,515.00	3,408
	G	68	2	2.94	4	238,511.00	3,904
	JF	1	0	0.00	0	6,674.00	0
	K	11	0	0.00	0	3,854.00	0
	<b>Total:</b>	<b>108</b>	<b>5</b>	<b>4.63</b>	<b>7</b>	<b>368,519.40</b>	<b>11,387</b>
<b>Meigs</b>	D	6	1	16.67	1	10,797.00	436
	G	13	0	0.00	0	22,366.00	0
	K	5	1	20.00	1	4,144.00	80
	<b>Total:</b>	<b>24</b>	<b>2</b>	<b>8.33</b>	<b>2</b>	<b>37,307.00</b>	<b>516</b>
<b>Monroe</b>	BDB	1	0	0.00	0	1,593.00	0
	D	21	0	0.00	0	39,835.00	0
	FO	1	0	0.00	0	324.00	0
	G	52	6	11.54	13	184,999.00	14,904
	K	11	2	18.18	3	7,021.00	380

## Tennessee Department of Agriculture County Summary Short Report

PULL DATE ranges from 7/1/2008 TO 6/30/2009

Today: 11/19/2009

<i>County</i>	<i>Prod Code</i>	<i>Total Samples</i>	<i>Samples in Violation</i>	<i>%</i>	<i>Test Violation Total</i>	<i>Total Volume (Gals)</i>	<i>Total in Violation</i>
	<b>Total:</b>	<b>86</b>	<b>8</b>	<b>9.30</b>	<b>16</b>	<b>233,772.00</b>	<b>15,284</b>
<b>Montgomery</b>	AG	1	0	0.00	0	2,420.00	0
	D	49	2	4.08	3	141,402.00	1,954
	DFE	1	0	0.00	0	2,242.00	0
	E85	7	1	14.29	1	17,160.00	473
	G	96	5	5.21	7	327,572.00	12,007
	JF	1	0	0.00	0	4,191.00	0
	K	8	2	25.00	2	4,909.00	415
	<b>Total:</b>	<b>163</b>	<b>10</b>	<b>6.13</b>	<b>13</b>	<b>499,896.00</b>	<b>14,849</b>
<b>Moore</b>	D	1	0	0.00	0	5,095.00	0
	G	4	0	0.00	0	9,700.00	0
	<b>Total:</b>	<b>5</b>	<b>0</b>	<b>0.00</b>	<b>0</b>	<b>14,795.00</b>	<b>0</b>
<b>Morgan</b>	D	13	1	7.69	1	20,061.00	697
	G	22	2	9.09	4	35,883.00	6,910
	K	1	0	0.00	0	178.00	0
	<b>Total:</b>	<b>36</b>	<b>3</b>	<b>8.33</b>	<b>5</b>	<b>56,122.00</b>	<b>7,607</b>
<b>Obion</b>	BD	1	1	100.00	2	1,800.00	1,800
	D	10	0	0.00	0	27,584.00	0
	DFE	3	0	0.00	0	2,248,082.00	0
	G	31	0	0.00	0	120,249.00	0

## Tennessee Department of Agriculture County Summary Short Report

PULL DATE ranges from 7/1/2008 TO 6/30/2009

Today: 11/19/2009

<i>County</i>	<i>Prod Code</i>	<i>Total Samples</i>	<i>Samples in Violation</i>	<i>%</i>	<i>Test Violation Total</i>	<i>Total Volume (Gals)</i>	<i>Total in Violation</i>
	K	5	1	20.00	1	1,815.00	109
	<b>Total:</b>	<b>50</b>	<b>2</b>	<b>4.00</b>	<b>3</b>	<b>2,399,530.00</b>	<b>1,909</b>
<b>Overton</b>	D	9	0	0.00	0	21,597.00	0
	G	26	1	3.85	2	53,842.00	404
	K	1	0	0.00	0	1,513.00	0
	<b>Total:</b>	<b>36</b>	<b>1</b>	<b>2.78</b>	<b>2</b>	<b>76,952.00</b>	<b>404</b>
<b>Perry</b>	D	5	0	0.00	0	12,533.05	0
	G	14	2	14.29	3	38,891.58	11,658
	K	3	0	0.00	0	1,729.00	0
	<b>Total:</b>	<b>22</b>	<b>2</b>	<b>9.09</b>	<b>3</b>	<b>53,153.63</b>	<b>11,658</b>
<b>Pickett</b>	D	2	0	0.00	0	4,818.00	0
	G	12	0	0.00	0	23,689.00	0
	<b>Total:</b>	<b>14</b>	<b>0</b>	<b>0.00</b>	<b>0</b>	<b>28,507.00</b>	<b>0</b>
<b>Polk</b>	D	13	0	0.00	0	31,535.00	0
	G	25	0	0.00	0	58,395.00	0
	K	5	1	20.00	1	5,883.00	440
	<b>Total:</b>	<b>43</b>	<b>1</b>	<b>2.33</b>	<b>1</b>	<b>95,813.00</b>	<b>440</b>
<b>Putnam</b>	D	22	0	0.00	0	149,315.00	0
	G	68	1	1.47	2	258,512.00	2,612
	K	6	0	0.00	0	5,535.00	0

## Tennessee Department of Agriculture County Summary Short Report

PULL DATE ranges from 7/1/2008 TO 6/30/2009

Today: 11/19/2009

<i>County</i>	<i>Prod Code</i>	<i>Total Samples</i>	<i>Samples in Violation</i>	<i>%</i>	<i>Test Violation Total</i>	<i>Total Volume (Gals)</i>	<i>Total in Violation</i>
	<b>Total:</b>	<b>96</b>	<b>1</b>	<b>1.04</b>	<b>2</b>	<b>413,362.00</b>	<b>2,612</b>
<b>Rhea</b>							
	AG	1	0	0.00	0	2,700.00	0
	D	19	1	5.26	1	34,410.00	3,340
	G	42	2	4.76	3	111,837.00	4,693
	K	9	1	11.11	1	5,877.00	267
	<b>Total:</b>	<b>71</b>	<b>4</b>	<b>5.63</b>	<b>5</b>	<b>154,824.00</b>	<b>8,300</b>
<b>Roane</b>							
	D	18	1	5.56	1	36,460.00	594
	G	49	1	2.04	2	152,923.00	2,450
	K	4	0	0.00	0	3,100.00	0
	<b>Total:</b>	<b>71</b>	<b>2</b>	<b>2.82</b>	<b>3</b>	<b>192,483.00</b>	<b>3,044</b>
<b>Robertson</b>							
	D	27	1	3.70	2	78,999.00	653
	DFE	1	0	0.00	0	7,876.00	0
	E85	2	0	0.00	0	1,686.00	0
	G	59	6	10.17	11	180,915.00	17,841
	K	14	1	7.14	1	17,411.00	1,201
	<b>Total:</b>	<b>103</b>	<b>8</b>	<b>7.77</b>	<b>14</b>	<b>286,887.00</b>	<b>19,695</b>
<b>Rutherford</b>							
	BDB	4	1	25.00	1	7,876.00	1,056
	D	41	3	7.32	3	232,896.00	2,567
	E85	2	1	50.00	1	5,594.00	3,317
	G	133	11	8.27	22	502,052.00	47,475

## Tennessee Department of Agriculture County Summary Short Report

PULL DATE ranges from 7/1/2008 TO 6/30/2009

Today: 11/19/2009

<i>County</i>	<i>Prod Code</i>	<i>Total Samples</i>	<i>Samples in Violation</i>	<i>%</i>	<i>Test Violation Total</i>	<i>Total Volume (Gals)</i>	<i>Total in Violation</i>
	K	25	1	4.00	1	22,808.00	51
	<b>Total:</b>	<b>205</b>	<b>17</b>	<b>8.29</b>	<b>28</b>	<b>771,226.00</b>	<b>54,466</b>
<b>Scott</b>	D	19	2	10.53	2	58,269.00	1,410
	G	29	3	10.34	6	87,320.00	7,192
	<b>Total:</b>	<b>48</b>	<b>5</b>	<b>10.42</b>	<b>8</b>	<b>145,589.00</b>	<b>8,602</b>
<b>Sequatchie</b>	D	5	0	0.00	0	18,445.00	0
	G	18	1	5.56	2	61,439.00	13,674
	K	2	0	0.00	0	2,701.00	0
	<b>Total:</b>	<b>25</b>	<b>1</b>	<b>4.00</b>	<b>2</b>	<b>82,585.00</b>	<b>13,674</b>
<b>Sevier</b>	BDB	1	1	100.00	1	1,835.00	1,835
	D	46	0	0.00	0	130,444.00	0
	G	138	12	8.70	24	673,516.00	65,673
	K	13	0	0.00	0	12,381.00	0
	<b>Total:</b>	<b>198</b>	<b>13</b>	<b>6.57</b>	<b>25</b>	<b>818,176.00</b>	<b>67,508</b>
<b>Shelby</b>	AG	2	0	0.00	0	122,000.00	0
	BD	8	2	25.00	3	100,380.00	3,520
	BDB	1	0	0.00	0	565.00	0
	D	80	1	1.25	1	10,155,024.00	3,340
	DFE	10	0	0.00	0	5,069,915.00	0
	G	544	15	2.76	29	28,903,627.00	461,250

## Tennessee Department of Agriculture County Summary Short Report

PULL DATE ranges from 7/1/2008 TO 6/30/2009

Today: 11/19/2009

<i>County</i>	<i>Prod Code</i>	<i>Total Samples</i>	<i>Samples in Violation</i>	<i>%</i>	<i>Test Violation Total</i>	<i>Total Volume (Gals)</i>	<i>Total in Violation</i>
	JF	2	0	0.00	0	1,978,700.00	0
	K	5	0	0.00	0	2,635.00	0
	<b>Total:</b>	<b>652</b>	<b>18</b>	<b>2.76</b>	<b>33</b>	<b>46,332,846.00</b>	<b>468,110</b>
<b>Smith</b>							
	D	6	1	16.67	1	32,229.00	5,498
	G	20	1	5.00	1	59,103.00	8,275
	K	2	0	0.00	0	1,830.00	0
	<b>Total:</b>	<b>28</b>	<b>2</b>	<b>7.14</b>	<b>2</b>	<b>93,162.00</b>	<b>13,773</b>
<b>Stewart</b>							
	D	8	0	0.00	0	8,471.00	0
	G	19	2	10.53	3	38,220.00	1,484
	<b>Total:</b>	<b>27</b>	<b>2</b>	<b>7.41</b>	<b>3</b>	<b>46,691.00</b>	<b>1,484</b>
<b>Sullivan</b>							
	D	37	3	8.11	3	119,290.00	16,594
	E85	4	0	0.00	0	5,007.00	0
	G	124	11	8.87	21	513,351.00	27,319
	K	13	2	15.38	2	11,626.00	1,100
	<b>Total:</b>	<b>178</b>	<b>16</b>	<b>8.99</b>	<b>26</b>	<b>649,274.00</b>	<b>45,013</b>
<b>Sumner</b>							
	BDB	2	2	100.00	2	2,658.00	2,658
	D	37	3	8.11	3	73,509.00	2,640
	G	106	12	11.32	20	349,343.00	29,960
	K	29	2	6.90	2	25,027.00	1,899
	<b>Total:</b>	<b>174</b>	<b>19</b>	<b>10.92</b>	<b>27</b>	<b>450,537.00</b>	<b>37,157</b>

## Tennessee Department of Agriculture County Summary Short Report

PULL DATE ranges from 7/1/2008 TO 6/30/2009

Today: 11/19/2009

<i>County</i>	<i>Prod Code</i>	<i>Total Samples</i>	<i>Samples in Violation</i>	<i>%</i>	<i>Test Violation Total</i>	<i>Total Volume (Gals)</i>	<i>Total in Violation</i>
<b>Tipton</b>							
	D	18	3	16.67	3	64,366.00	14,234
	G	45	1	2.22	1	154,228.00	1,280
	K	2	0	0.00	0	1,160.00	0
	<b>Total:</b>	<b>65</b>	<b>4</b>	<b>6.15</b>	<b>4</b>	<b>219,754.00</b>	<b>15,514</b>
<b>Trousdale</b>							
	D	3	0	0.00	0	5,693.00	0
	G	6	0	0.00	0	22,193.00	0
	<b>Total:</b>	<b>9</b>	<b>0</b>	<b>0.00</b>	<b>0</b>	<b>27,886.00</b>	<b>0</b>
<b>Unicoi</b>							
	D	4	0	0.00	0	13,334.00	0
	E85	1	1	100.00	1	1,472.00	1,472
	G	16	2	12.50	4	67,263.00	3,821
	<b>Total:</b>	<b>21</b>	<b>3</b>	<b>14.29</b>	<b>5</b>	<b>82,069.00</b>	<b>5,293</b>
<b>Union</b>							
	D	6	0	0.00	0	9,250.00	0
	G	16	2	12.50	3	51,491.00	5,088
	JF	1	0	0.00	0	5,697.00	0
	K	1	0	0.00	0	950.00	0
	<b>Total:</b>	<b>24</b>	<b>2</b>	<b>8.33</b>	<b>3</b>	<b>67,388.00</b>	<b>5,088</b>
<b>Van Buren</b>							
	D	2	0	0.00	0	3,469.00	0
	G	8	0	0.00	0	18,926.00	0
	K	1	1	100.00	1	243.00	243
	<b>Total:</b>	<b>11</b>	<b>1</b>	<b>9.09</b>	<b>1</b>	<b>22,638.00</b>	<b>243</b>

## Tennessee Department of Agriculture County Summary Short Report

PULL DATE ranges from 7/1/2008 TO 6/30/2009

Today: 11/19/2009

<i>County</i>	<i>Prod Code</i>	<i>Total Samples</i>	<i>Samples in Violation</i>	<i>%</i>	<i>Test Violation Total</i>	<i>Total Volume (Gals)</i>	<i>Total in Violation</i>
<b>Warren</b>							
	D	15	0	0.00	0	61,523.00	0
	G	55	4	7.27	7	127,634.00	8,905
	K	5	1	20.00	1	3,872.00	1,295
	<b>Total:</b>	<b>75</b>	<b>5</b>	<b>6.67</b>	<b>8</b>	<b>193,029.00</b>	<b>10,200</b>
<b>Washington</b>							
	D	25	2	8.00	2	64,586.00	12,860
	E85	1	1	100.00	2	1,852.00	1,852
	G	81	9	11.11	18	325,612.00	23,875
	K	12	2	16.67	2	9,485.00	4,136
	<b>Total:</b>	<b>119</b>	<b>14</b>	<b>11.76</b>	<b>24</b>	<b>401,535.00</b>	<b>42,723</b>
<b>Wayne</b>							
	D	11	0	0.00	0	32,766.40	0
	G	27	0	0.00	0	57,006.80	0
	K	3	1	33.33	1	995.00	185
	<b>Total:</b>	<b>41</b>	<b>1</b>	<b>2.44</b>	<b>1</b>	<b>90,768.20</b>	<b>185</b>
<b>Weakley</b>							
	D	11	0	0.00	0	27,327.00	0
	G	27	0	0.00	0	91,445.00	0
	<b>Total:</b>	<b>38</b>	<b>0</b>	<b>0.00</b>	<b>0</b>	<b>118,772.00</b>	<b>0</b>
<b>White</b>							
	D	7	0	0.00	0	16,734.00	0
	G	36	9	25.00	12	83,407.00	17,141
	K	2	1	50.00	1	1,939.00	1,098
	<b>Total:</b>	<b>45</b>	<b>10</b>	<b>22.22</b>	<b>13</b>	<b>102,080.00</b>	<b>18,239</b>

## Tennessee Department of Agriculture County Summary Short Report

PULL DATE ranges from 7/1/2008 TO 6/30/2009

Today: 11/19/2009

<i>County</i>	<i>Prod Code</i>	<i>Total Samples</i>	<i>Samples in Violation</i>	<i>%</i>	<i>Test Violation Total</i>	<i>Total Volume (Gals)</i>	<i>Total in Violation</i>
<b>Williamson</b>							
	BDB	1	0	0.00	0	2,199.00	0
	D	27	1	3.70	1	156,153.00	341
	G	77	7	9.09	12	308,846.00	32,593
	K	17	1	5.88	1	11,820.00	402
	<b>Total:</b>	<b>122</b>	<b>9</b>	<b>7.38</b>	<b>14</b>	<b>479,018.00</b>	<b>33,336</b>
<b>Wilson</b>							
	BDB	1	0	0.00	0	618.00	0
	D	28	3	10.71	3	162,893.00	6,770
	E85	1	0	0.00	0	565.00	0
	G	75	7	9.33	15	320,208.00	76,522
	K	19	1	5.26	1	14,637.00	640
	<b>Total:</b>	<b>124</b>	<b>11</b>	<b>8.87</b>	<b>19</b>	<b>498,921.00</b>	<b>83,932</b>

# **Kerosene and Motor Fuel Enforcement Summary**

**July 1, 2008 – June 30, 2009**

## **Civil Penalties:**

Total Penalties Issued:	143
Amount Issued:	\$89,402
Total Collections:	\$93,830

## **Product Stop Sales:**

Total Stop-Sales:	332
Total Gallons Stop-Sold:	740,995

## **Administrative Hearings**

There was no administrative hearing held in FY '07.