



ANNUAL REPORT ON THE QUALITY OF KEROSENE AND MOTOR FUEL IN TENNESSEE

TABLE OF CONTENTS

- I. Effectiveness of Program**
 - Violation % Graphs**
 - State Wide Violation Graph**
 - Gasoline, Diesel, Kerosene Trend Graph**

- II. Consumer Complaints Summary**

- III. Sample Test Data**
 - a. State Wide Summary**
 - b. TN Region Summary**
 - c. Product Summary**
 - d. Business Type Summary**
 - e. Sample Type Summary**
 - f. County Distribution Data**

- IV. Enforcement Summary**

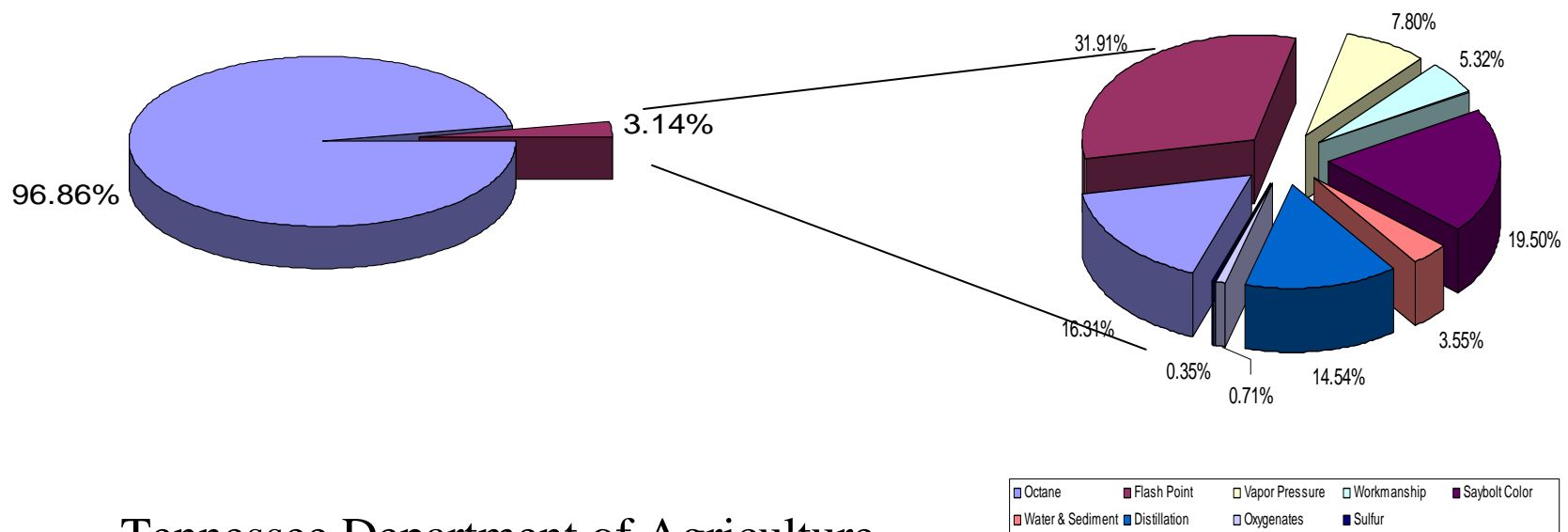
- VII. Inspection Summary Data**

- VIII. Cost of Conducting the Program**

State Wide Violation Summary

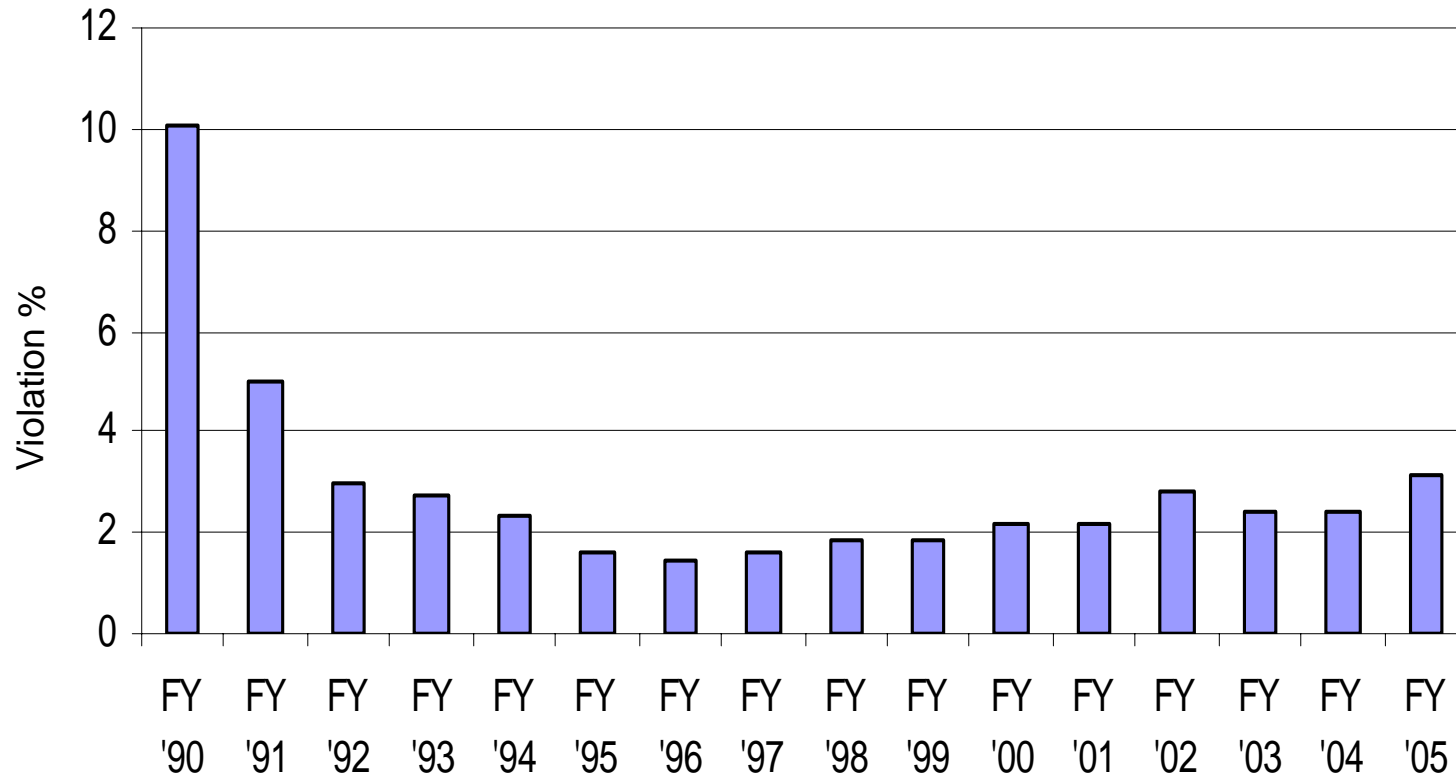
Violation Breakdown

July 1, 2003 - June 30, 2004



Tennessee Department of Agriculture
Regulatory Services

TENNESSEE DEPARTMENT OF AGRICULTURE
ANNUAL SAMPLE VIOLATION SUMMARY
All Regulated Products Tested

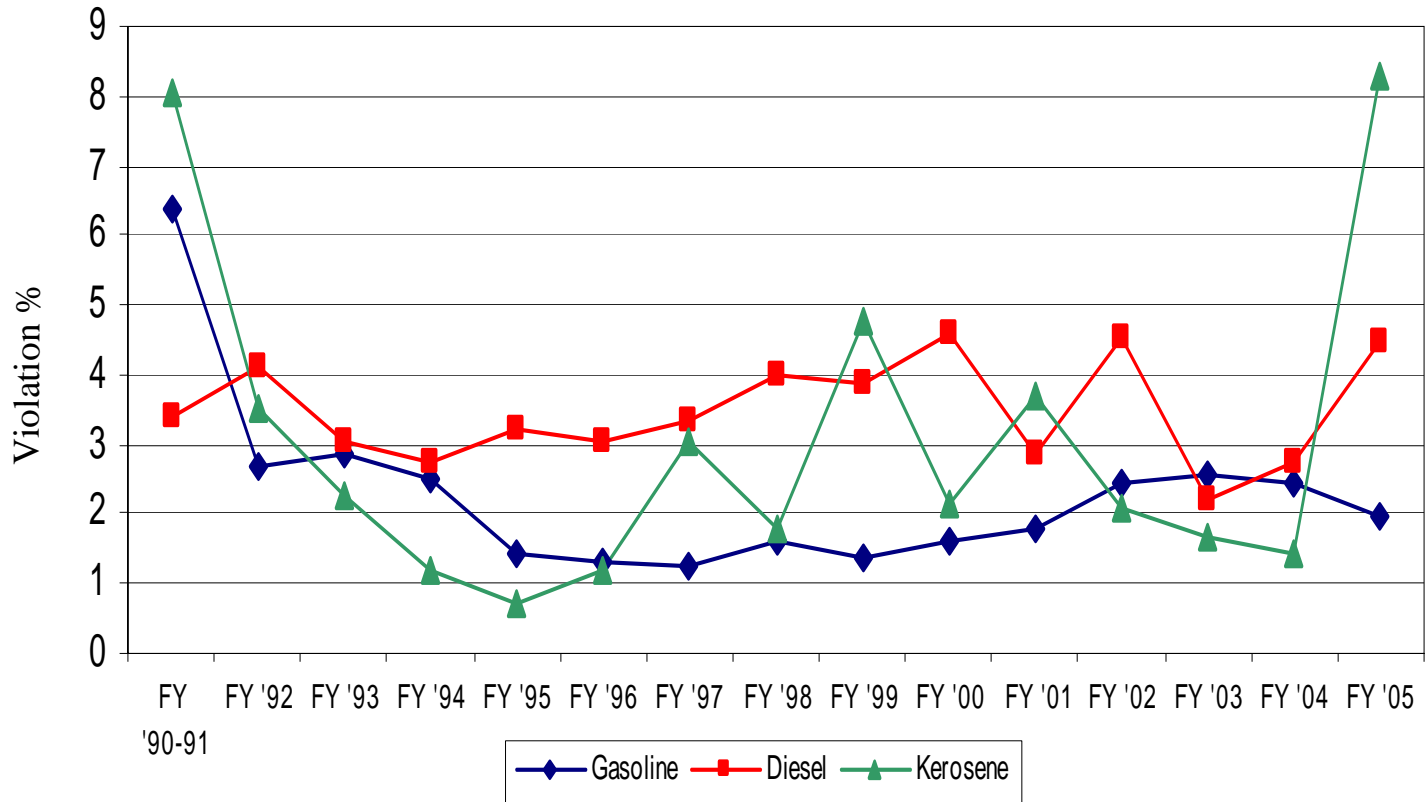


EFFECTIVENESS OF PROGRAM
REGULATORY SERVICES

TENNESSEE DEPARTMENT OF AGRICULTURE

ANNUAL SAMPLE VIOLATION SUMMARY

Gasoline, Diesel, & Kerosene Breakdown



EFFECTIVENESS OF PROGRAM
REGULATORY SERVICES



TENNESSEE DEPARTMENT OF AGRICULTURE

Ken Givens
COMMISSIONER

REGULATORY SERVICES
Petroleum Program

Summary of Consumer Complaints Received From
07/01/2004 – 06/30/2005

Total No. Of Complaints Evaluated During Timeframe: 62

Category Breakdown of Complaints

Octane	8
Water	26
Sediment	2
Contamination	25
Miscellaneous	1

The Department maintains a toll free line for Consumer Complaints. It is promoted through media publicity and dispenser decals applied by inspectors performing Weights and Measures activities.

REPORTING CODE KEY

Product Codes

AG - Aviation Gasoline
D - Diesel
G - Gasoline
JF - Jet Fuel
K - Kerosene
RF - Racing Fuel
PD - Premium Diesel
FO - Fuel Oil
LPG - Liquefied Petroleum Gas

Grade Codes

MG - Mid Grade
MGE - Mid Grade w/ Ethanol
PU - Premium Unleaded
PUE - Premium Unleaded w/ Ethanol
RL - Regular Leaded
RU - Regular Unleaded
RUE - Regular Unleaded w/ Ethanol
SO - Sub Octane
1 - No. 1 Fuel Oil
1D - No. 1-D Diesel
2D - No. 2-D Diesel
2DLS - No. 2-D Low Sulfur
1K - No. 1 Kerosene
2K - No. 2 Kerosene
JA - Jet A Turbine Fuel
80 - 80 Octane
100 - 100 Octane
100LL - 100 Low Lead

District Codes

W - West TN
M - Middle TN
E - East TN

Business Type

R - Retailer
T - Terminal
A - Airport
D - Distributor
M - Marina
O - Other

Inspection Type

R - Routine
C - Complaint
F - Follow-up
O - Office Request

Tennessee Department of Agriculture State Wide Violation Analysis Report

PULL DATE ranges from 7/1/2004 TO 6/30/2005

Today: 01/20/2006

<i>Prod Code</i>	<i>Total Samples</i>	<i>Samples in Violation</i>	<i>%</i>	<i>Test Violation Total</i>	<i>Total Volume (Gals)</i>	<i>Total in Violation</i>
AG	65	0	0.00	0	3,610,205.60	0
D	1,919	86	4.48	86	77,483,065.70	407,081
FO	2	0	0.00	0	4,470.00	0
G	5,409	107	1.98	124	187,161,505.11	1,297,482
JF	53	0	0.00	0	7,681,115.50	0
K	794	66	8.31	72	2,505,106.00	40,013
LPG	12	0	0.00	0	153,666.00	0
Total	8,254	259	3.14	282	278,599,133.91	1,744,576

Test Violation Detail Listing

46	Octane	16.31%
90	Flash Point	31.91%
2	Oxygenates	0.71%
22	Vapor Pressure	7.80%
15	Workmanship (Appearance)	5.32%
55	Saybolt Color	19.50%
10	Sediment & Water	3.55%
1	Sulfur	0.35%
41	Distillation	14.54%

Tennessee Department of Agriculture District Violation Analysis Report

ALL DISTRICT VALUES SELECTED.

PULL DATE ranges from 7/1/2004 TO 6/30/2005

Today: 01/20/2006

<i>Dist</i>	<i>Prod Code</i>	<i>Grade</i>	<i>Total Samples</i>	<i>Samples in Violation</i>	<i>%</i>	<i>Test Violation Total</i>	<i>Total Volume (Gals)</i>	<i>Total in Violation</i>
EAST								
AG	100LL		17	0	0.00	0	58,839	0
Subtotal:			17	0	0.00	0	58,839	0
D	2D		83	3	3.61	3	6,952,517	4,725
D	2D LS		777	34	4.38	34	17,951,985	54,639
Subtotal:			860	37	4.30	37	24,904,502	59,364
G	MG		723	16	2.21	17	2,245,670	43,546
G	PU		812	26	3.20	26	20,213,792	74,198
G	RU		908	4	0.44	4	40,648,952	10,874
Subtotal:			2,443	46	1.88	47	63,108,414	128,618
JF	JA		10	0	0.00	0	54,250	0
Subtotal:			10	0	0.00	0	54,250	0
K	1K		384	35	9.11	36	1,895,336	27,786
K	2K		1	0	0.00	0	126	0
Subtotal:			385	35	9.09	36	1,895,462	27,786
LPG	Pro.		3	0	0.00	0	42,182	0
LPG	SD		5	0	0.00	0	109,029	0
Subtotal:			8	0	0.00	0	151,211	0
Total:			3,723	118	3.17	120	90,172,678	215,768

Total Violation Detail Listing

20	Octane	16.67%
39	Flash Point	32.50%
2	Oxygenates	1.67%
13	Vapor Pressure	10.83%
7	Workmanship (Appearance)	5.83%
34	Saybolt Color	28.33%
5	Distillation	4.17%

Tennessee Department of Agriculture District Violation Analysis Report

ALL DISTRICT VALUES SELECTED.

PULL DATE ranges from 7/1/2004 TO 6/30/2005

Today: 01/20/2006

<i>Dist</i>	<i>Prod Code</i>	<i>Grade</i>	<i>Total Samples</i>	<i>Samples in Violation</i>	<i>%</i>	<i>Test Violation Total</i>	<i>Total Volume (Gals)</i>	<i>Total in Violation</i>
MIDDLE								
AG	100LL		24	0	0.00	0	97,040	0
Subtotal:			24	0	0.00	0	97,040	0
D	2D		52	1	1.92	1	2,137,620	1,971
D	2D LS		680	32	4.71	32	32,757,281	34,229
Subtotal:			732	33	4.51	33	34,894,901	36,200
FO	1		2	0	0.00	0	4,470	0
Subtotal:			2	0	0.00	0	4,470	0
G	MG		515	11	2.14	15	1,464,848	19,181
G	PU		633	19	3.00	23	27,005,637	597,125
G	RU		667	7	1.05	7	45,060,999	511,919
Subtotal:			1,815	37	2.04	45	73,531,484	1,128,225
JF	JA		20	0	0.00	0	1,479,760	0
Subtotal:			20	0	0.00	0	1,479,760	0
K	1K		345	29	8.41	33	539,744	11,210
Subtotal:			345	29	8.41	33	539,744	11,210
LPG	SD		3	0	0.00	0	2,205	0
Subtotal:			3	0	0.00	0	2,205	0
Total:			2,941	99	3.37	111	110,549,604	1,175,635

**Tennessee Department of Agriculture
District Violation Analysis Report**

ALL DISTRICT VALUES SELECTED.

PULL DATE ranges from 7/1/2004 TO 6/30/2005

Today: 01/20/2006

<i>Dist</i>	<i>Prod Code</i>	<i>Grade</i>	<i>Total Samples</i>	<i>Samples in Violation</i>	<i>%</i>	<i>Test Violation Total</i>	<i>Total Volume (Gals)</i>	<i>Total in Violation</i>
-------------	------------------	--------------	----------------------	-----------------------------	----------	-----------------------------	----------------------------	---------------------------

Total Violation Detail Listing

16	Octane	14.41%
37	Flash Point	33.33%
6	Vapor Pressure	5.41%
5	Workmanship (Appearance)	4.50%
19	Saybolt Color	17.12%
7	Sediment & Water	6.31%
1	Sulfur	0.90%
20	Distillation	18.02%

Tennessee Department of Agriculture District Violation Analysis Report

ALL DISTRICT VALUES SELECTED.

PULL DATE ranges from 7/1/2004 TO 6/30/2005

Today: 01/20/2006

<i>Dist</i>	<i>Prod Code</i>	<i>Grade</i>	<i>Total Samples</i>	<i>Samples in Violation</i>	<i>%</i>	<i>Test Violation Total</i>	<i>Total Volume (Gals)</i>	<i>Total in Violation</i>
WEST								
AG	100LL		24	0	0.00	0	3,454,327	0
Subtotal:			24	0	0.00	0	3,454,327	0
D	2D		40	1	2.50	1	4,986,230	698
D	2D LS		287	15	5.23	15	12,697,433	310,819
Subtotal:			327	16	4.89	16	17,683,662	311,517
G	MG		350	9	2.57	9	1,003,424	26,185
G	PU		362	8	2.21	13	21,586,470	10,152
G	RU		439	7	1.59	10	27,931,713	4,302
Subtotal:			1,151	24	2.09	32	50,521,607	40,639
JF	JA		23	0	0.00	0	6,147,106	0
Subtotal:			23	0	0.00	0	6,147,106	0
K	1K		64	2	3.13	3	69,900	1,017
Subtotal:			64	2	3.13	3	69,900	1,017
LPG	SD		1	0	0.00	0	250	0
Subtotal:			1	0	0.00	0	250	0
Total:			1,590	42	2.64	51	77,876,852	353,173

Total Violation Detail Listing

10	Octane	19.61%
14	Flash Point	27.45%
3	Vapor Pressure	5.88%
3	Workmanship (Appearance)	5.88%
2	Saybolt Color	3.92%
3	Sediment & Water	5.88%
16	Distillation	31.37%

Tennessee Department of Agriculture Product Violation Analysis Report

PULL DATE ranges from 7/1/2004 TO 6/30/2005

Today: 01/20/2006

<i>Prod</i>	<i>Grade</i>	<i>Total Samples</i>	<i>Samples in Violation</i>	<i>%</i>	<i>Test Violation Total</i>	<i>Total Volume (Gals)</i>	<i>Total in Violation</i>
Aviation Gasoline	100LL	65	0	0.00	0	3,610,205.60	0
Subtotal:		65	0	0.00	0	3,610,205.60	0

Tennessee Department of Agriculture Product Violation Analysis Report

PULL DATE ranges from 7/1/2004 TO 6/30/2005

Today: 01/20/2006

<i>Prod</i>	<i>Grade</i>	<i>Total Samples</i>	<i>Samples in Violation</i>	<i>%</i>	<i>Test Violation Total</i>	<i>Total Volume (Gals)</i>	<i>Total in Violation</i>
Diesel	2D	175	5	2.86	5	14,076,366.71	7,394
	2D LS	1,744	81	4.64	81	63,406,698.99	399,687
Subtotal:		1,919	86	4.48	86	77,483,065.70	407,081

Test Violation Detail Listing

83	Flash Point	96.51%
3	Sediment & Water	3.49%

Tennessee Department of Agriculture Product Violation Analysis Report

PULL DATE ranges from 7/1/2004 TO 6/30/2005

Today: 01/20/2006

<i>Prod</i>	<i>Grade</i>	<i>Total Samples</i>	<i>Samples in Violation</i>	<i>%</i>	<i>Test Violation Total</i>	<i>Total Volume (Gals)</i>	<i>Total in Violation</i>
Fuel Oils	1	2	0	0.00	0	4,470.00	0
Subtotal:		2	0	0.00	0	4,470.00	0

Tennessee Department of Agriculture Product Violation Analysis Report

PULL DATE ranges from 7/1/2004 TO 6/30/2005

Today: 01/20/2006

<i>Prod</i>	<i>Grade</i>	<i>Total Samples</i>	<i>Samples in Violation</i>	<i>%</i>	<i>Test Violation Total</i>	<i>Total Volume (Gals)</i>	<i>Total in Violation</i>
Gasoline							
	MG	1,588	36	2.27	41	4,713,941.97	88,912
	PU	1,807	53	2.93	62	68,805,899.34	681,475
	RU	2,014	18	0.89	21	113,641,663.80	527,095
Subtotal:		5,409	107	1.98	124	187,161,505.11	1,297,482

Test Violation Detail Listing

46	Octane	37.10%
2	Oxygenates	1.61%
22	Vapor Pressure	17.74%
15	Workmanship (Appearance)	12.10%
39	Distillation	31.45%

Tennessee Department of Agriculture Product Violation Analysis Report

PULL DATE ranges from 7/1/2004 TO 6/30/2005

Today: 01/20/2006

<i>Prod</i>	<i>Grade</i>	<i>Total Samples</i>	<i>Samples in Violation</i>	<i>%</i>	<i>Test Violation Total</i>	<i>Total Volume (Gals)</i>	<i>Total in Violation</i>
Jet Fuel	JA	53	0	0.00	0	7,681,115.50	0
Subtotal:		53	0	0.00	0	7,681,115.50	0

Tennessee Department of Agriculture Product Violation Analysis Report

PULL DATE ranges from 7/1/2004 TO 6/30/2005

Today: 01/20/2006

<i>Prod</i>	<i>Grade</i>	<i>Total Samples</i>	<i>Samples in Violation</i>	<i>%</i>	<i>Test Violation Total</i>	<i>Total Volume (Gals)</i>	<i>Total in Violation</i>
Kerosene	1K	793	66	8.32	72	2,504,980.00	40,013
	2K	1	0	0.00	0	126.00	0
Subtotal:		794	66	8.31	72	2,505,106.00	40,013

Test Violation Detail Listing

7	Flash Point	9.72%
55	Saybolt Color	76.39%
7	Sediment & Water	9.72%
1	Sulfur	1.39%
2	Distillation	2.78%

Tennessee Department of Agriculture Product Violation Analysis Report

PULL DATE ranges from 7/1/2004 TO 6/30/2005

Today: 01/20/2006

<i>Prod</i>	<i>Grade</i>	<i>Total Samples</i>	<i>Samples in Violation</i>	<i>%</i>	<i>Test Violation Total</i>	<i>Total Volume (Gals)</i>	<i>Total in Violation</i>
Liquid Propane Gas							
	Pro.	3	0	0.00	0	42,182.00	0
	SD	9	0	0.00	0	111,484.00	0
Subtotal:		12	0	0.00	0	153,666.00	0

Tennessee Department of Agriculture Business Type Violation Analysis Report

Data Sorted with All Parameters

PULL DATE ranges from 7/1/2004 TO 6/30/2005

Today: 01/20/2006

<i>Bus Type</i>	<i>Prod Code</i>	<i>Grade</i>	<i>Total Samples</i>	<i>Samples in Violation</i>	<i>%</i>	<i>Test Violation Total</i>	<i>Total Volume (Gals)</i>	<i>Total in Violation</i>
Airport	AG	100LL	56	0	0.00	0	226,721	0
		Subtotal:	56	0	0.00	0	226,721	0
	G	PU	1	0	0.00	0	500	0
	G	RU	3	0	0.00	0	2,257	0
		Subtotal:	4	0	0.00	0	2,757	0
	JF	JA	42	0	0.00	0	358,261	0
		Subtotal:	42	0	0.00	0	358,261	0
		Total:	102	0	0.00	0	587,738	0

Tennessee Department of Agriculture Business Type Violation Analysis Report

Data Sorted with All Parameters

PULL DATE ranges from 7/1/2004 TO 6/30/2005

Today: 01/20/2006

<i>Bus Type</i>	<i>Prod Code</i>	<i>Grade</i>	<i>Total Samples</i>	<i>Samples in Violation</i>	<i>%</i>	<i>Test Violation Total</i>	<i>Total Volume (Gals)</i>	<i>Total in Violation</i>
Distributor								
	D	2D	78	0	0.00	0	527,726	0
	D	2D LS	90	1	1.11	1	545,689	7,625
Subtotal:			168	1	0.60	1	1,073,415	7,625
	G	MG	15	0	0.00	0	71,888	0
	G	PU	49	0	0.00	0	199,089	0
	G	RU	60	1	1.67	1	501,261	559
Subtotal:			124	1	0.81	1	772,238	559
	K	1K	25	2	8.00	2	93,967	2,722
Subtotal:			25	2	8.00	2	93,967	2,722
	LPG	SD	7	0	0.00		106,714	0
Subtotal:			7	0	0.00		106,714	0
Total:			324	4	1.23	4	2,046,334	10,906

Test Violation Detail Listing

1	Flash Point	25.00%
2	Saybolt Color	50.00%
1	Distillation	25.00%

Tennessee Department of Agriculture Business Type Violation Analysis Report

Data Sorted with All Parameters

PULL DATE ranges from 7/1/2004 TO 6/30/2005

Today: 01/20/2006

<i>Bus Type</i>	<i>Prod Code</i>	<i>Grade</i>	<i>Total Samples</i>	<i>Samples in Violation</i>	<i>%</i>	<i>Test Violation Total</i>	<i>Total Volume (Gals)</i>	<i>Total in Violation</i>
Marina	D	2D	14	3	21.43	3	27,164	4,998
	D	2D LS	7	0	0.00	0	9,523	0
		Subtotal:	21	3	14.29	3	36,687	4,998
	G	MG	64	4	6.25	4	131,024	5,263
	G	PU	36	4	11.11	4	54,397	3,383
	G	RU	35	0	0.00	0	47,671	0
		Subtotal:	135	8	5.93	8	233,092	8,646
	LPG	SD	1	0	0.00	0	3,300	0
		Subtotal:	1	0	0.00		3,300	0
		Total:	157	11	7.01	11	273,079	13,644

Test Violation Detail Listing

6	Octane	54.55%
3	Flash Point	27.27%
1	Workmanship (Appearance)	9.09%
1	Distillation	9.09%

Tennessee Department of Agriculture Business Type Violation Analysis Report

Data Sorted with All Parameters

PULL DATE ranges from 7/1/2004 TO 6/30/2005

Today: 01/20/2006

<i>Bus Type</i>	<i>Prod Code</i>	<i>Grade</i>	<i>Total Samples</i>	<i>Samples in Violation</i>	<i>%</i>	<i>Test Violation Total</i>	<i>Total Volume (Gals)</i>	<i>Total in Violation</i>
Other	D	2D LS	4	0	0.00	0	6,878	0
		Subtotal:	4	0	0.00	0	6,878	0
	G	RU	1	0	0.00	0	584	0
		Subtotal:	1	0	0.00	0	584	0
	LPG	Pro.	3	0	0.00	0	42,182	0
		Subtotal:	3	0	0.00	0	42,182	0
		Total:	8	0	0.00	0	49,644	0

Tennessee Department of Agriculture Business Type Violation Analysis Report

Data Sorted with All Parameters

PULL DATE ranges from 7/1/2004 TO 6/30/2005

Today: 01/20/2006

<i>Bus Type</i>	<i>Prod Code</i>	<i>Grade</i>	<i>Total Samples</i>	<i>Samples in Violation</i>	<i>%</i>	<i>Test Violation Total</i>	<i>Total Volume (Gals)</i>	<i>Total in Violation</i>
Retailer								
D	2D		60	2	3.33	2	181,470	2,396
D	2D LS		1,569	79	5.04	79	6,099,910	104,665
Subtotal:			1,629	81	4.97	81	6,281,380	107,061
FO	1		2	0	0.00	0	4,470	0
Subtotal:			2	0	0.00	0	4,470	0
G	MG		1,509	32	2.12	37	4,511,030	83,649
G	PU		1,626	47	2.89	55	4,575,362	133,621
G	RU		1,815	16	0.88	19	7,890,975	26,536
Subtotal:			4,950	95	1.92	111	16,977,367	243,806
JF	JA		1	0	0.00	0	257,176	0
Subtotal:			1	0	0.00	0	257,176	0
K	1K		761	64	8.41	70	666,913	37,291
K	2K		1	0	0.00	0	126	0
Subtotal:			762	64	8.40	70	667,039	37,291
LPG	SD		1	0	0.00	0	1,470	0
Subtotal:			1	0	0.00	0	1,470	0
Total:			7,345	240	3.27	262	24,188,903	388,158

Test Violation Detail Listing

40	Octane	15.27%
86	Flash Point	32.82%
2	Oxygenates	0.76%
22	Vapor Pressure	8.40%
12	Workmanship (Appearance)	4.58%
53	Saybolt Color	20.23%
9	Sediment & Water	3.44%
1	Sulfur	0.38%
37	Distillation	14.12%

Tennessee Department of Agriculture Business Type Violation Analysis Report

Data Sorted with All Parameters

PULL DATE ranges from 7/1/2004 TO 6/30/2005

Today: 01/20/2006

<i>Bus Type</i>	<i>Prod Code</i>	<i>Grade</i>	<i>Total Samples</i>	<i>Samples in Violation</i>	<i>%</i>	<i>Test Violation Total</i>	<i>Total Volume (Gals)</i>	<i>Total in Violation</i>
Terminal	AG	100LL	9	0	0.00	0	3,383,485	0
	Subtotal:		9	0	0.00	0	3,383,485	0
	D	2D	23	0	0.00	0	13,340,007	0
	D	2D LS	74	1	1.35	1	56,744,699	287,397
	Subtotal:		97	1	1.03	1	70,084,706	287,397
	G	PU	95	2	2.11	3	63,976,551	544,471
	G	RU	100	1	1.00	1	105,198,916	500,000
	Subtotal:		195	3	1.54	4	169,175,467	1,044,471
	JF	JA	10	0	0.00	0	7,065,679	0
	Subtotal:		10	0	0.00	0	7,065,679	0
	K	1K	7	0	0.00	0	1,744,100	0
	Subtotal:		7	0	0.00	0	1,744,100	0
	Total:		318	4	1.26	5	251,453,436	1,331,868

Test Violation Detail Listing

2	Workmanship (Appearance)	40.00%
1	Sediment & Water	20.00%
2	Distillation	40.00%

Tennessee Department of Agriculture Inspection Type Violation Analysis Report

PULL DATE ranges from 7/1/2004 TO 6/30/2005

Today : 01/20/2006

<i>Insp Type</i>	<i>Prod Code</i>	<i>Grade</i>	<i>Total Samples</i>	<i>Samples in Violation</i>	<i>%</i>	<i>Test Violation Total</i>	<i>Total Volume (Gals)</i>	<i>Total in Violation</i>
Complaint	D	2D LS	7	2	28.57	2	57,226	3,725
		Subtotal:	7	2	28.57	2	57,226	3,725
	G	MG	13	2	15.38	4	38,239	6,055
	G	PU	9	1	11.11	5	35,612	934
	G	RU	30	0	0.00	0	167,119	0
		Subtotal:	52	3	5.77	9	240,970	6,989
	K	1K	1	0	0.00	0	959	0
		Subtotal:	1	0	0.00	0	959	0
		Total:	60	5	8.33	11	299,155	10,714

Test Violation Detail Listing

3	Octane	27.27%
1	Flash Point	9.09%
1	Workmanship (Appearance)	9.09%
1	Sediment & Water	9.09%
5	Distillation	45.45%

Tennessee Department of Agriculture Inspection Type Violation Analysis Report

PULL DATE ranges from 7/1/2004 TO 6/30/2005

Today : 01/20/2006

<i>Insp Type</i>	<i>Prod Code</i>	<i>Grade</i>	<i>Total Samples</i>	<i>Samples in Violation</i>	<i>%</i>	<i>Test Violation Total</i>	<i>Total Volume (Gals)</i>	<i>Total in Violation</i>
Follow-Up	AG	100LL	1	0	0.00	0	5,621	0
		Subtotal:	1	0	0.00	0	5,621	0
	D	2D	2	1	50.00	1	2,550	1,800
	D	2D LS	50	7	14.00	7	145,413	5,266
		Subtotal:	52	8	15.38	8	147,963	7,066
	FO	1	1	0	0.00	0	2,758	0
		Subtotal:	1	0	0.00	0	2,758	0
	G	MG	32	2	6.25	2	105,409	6,901
	G	PU	50	8	16.00	10	412,678	30,649
	G	RU	29	2	6.90	2	2,525,015	1,645
		Subtotal:	111	12	10.81	14	3,043,102	39,195
	K	1K	19	2	10.53	2	14,775	2,256
		Subtotal:	19	2	10.53	2	14,775	2,256
		Total:	184	22	11.96	24	3,214,219	48,517

Test Violation Detail Listing

10	Octane	41.67%
8	Flash Point	33.33%
1	Vapor Pressure	4.17%
2	Saybolt Color	8.33%
3	Distillation	12.50%

Tennessee Department of Agriculture Inspection Type Violation Analysis Report

PULL DATE ranges from 7/1/2004 TO 6/30/2005

Today : 01/20/2006

<i>Insp Type</i>	<i>Prod Code</i>	<i>Grade</i>	<i>Total Samples</i>	<i>Samples in Violation</i>	<i>%</i>	<i>Test Violation Total</i>	<i>Total Volume (Gals)</i>	<i>Total in Violation</i>
Office Request								
	D	2D	4	0	0.00	0	675,147	0
	D	2D LS	9	0	0.00	0	48,589	0
		Subtotal:	13	0	0.00	0	723,736	0
	G	MG	3	0	0.00	0	6,782	0
	G	PU	6	1	16.67	1	313,964	146
	G	RU	7	0	0.00	0	570,255	0
		Subtotal:	16	1	6.25	1	891,001	146
	JF	JA	1	0	0.00	0	257,176	0
		Subtotal:	1	0	0.00	0	257,176	0
	K	1K	2	0	0.00	0	10,533	0
		Subtotal:	2	0	0.00	0	10,533	0
		Total:	32	1	3.13	1	1,882,446	146

Test Violation Detail Listing

1

Distillation

100.00%

Tennessee Department of Agriculture Inspection Type Violation Analysis Report

PULL DATE ranges from 7/1/2004 TO 6/30/2005

Today : 01/20/2006

<i>Insp Type</i>	<i>Prod Code</i>	<i>Grade</i>	<i>Total Samples</i>	<i>Samples in Violation</i>	<i>%</i>	<i>Test Violation Total</i>	<i>Total Volume (Gals)</i>	<i>Total in Violation</i>
Random	AG	100LL	64	0	0.00	0	3,604,585	0
	Subtotal:		64	0	0.00	0	3,604,585	0
	D	2D	169	4	2.37	4	13,398,670	5,594
	D	2D LS	1,678	72	4.29	72	63,155,471	390,696
	Subtotal:		1847	76	4.11	76	76,554,141	396,290
	FO	1	1	0	0.00	0	1,712	0
	Subtotal:		1	0	0.00	0	1,712	0
	G	MG	1,540	32	2.08	35	4,563,512	75,956
	G	PU	1,742	43	2.47	46	68,043,645	649,746
	G	RU	1,948	16	0.82	19	110,379,275	525,450
	Subtotal:		5230	91	1.74	100	182,986,432	1,251,152
	JF	JA	52	0	0.00	0	7,423,940	0
	Subtotal:		52	0	0.00	0	7,423,940	0
	K	1K	771	64	8.30	70	2,478,713	37,757
	K	2K	1	0	0.00	0	126	0
	Subtotal:		772	64	8.29	70	2,478,839	37,757
	LPG	Pro.	3	0	0.00	0	42,182	0
	LPG	SD	9	0	0.00	0	111,484	0
	Subtotal:		12	0	0.00	0	153,666	0

Tennessee Department of Agriculture Inspection Type Violation Analysis Report

PULL DATE ranges from 7/1/2004 TO 6/30/2005

Today : 01/20/2006

<i>Insp Type</i>	<i>Prod Code</i>	<i>Grade</i>	<i>Total Samples</i>	<i>Samples in Violation</i>	<i>%</i>	<i>Test Violation Total</i>	<i>Total Volume (Gals)</i>	<i>Total in Violation</i>
Total:			7978	231	2.90	246	273,203,314	1,685,199

Test Violation Detail Listing

33	Octane	13.41%
81	Flash Point	32.93%
2	Oxygenates	0.81%
21	Vapor Pressure	8.54%
14	Workmanship (Appearance)	5.69%
53	Saybolt Color	21.54%
9	Sediment & Water	3.66%
1	Sulfur	0.41%
32	Distillation	13.01%

Tennessee Department of Agriculture County Summary Short Report

PULL DATE ranges from 7/1/2004 TO 6/30/2005

Today: 01/20/2006

<i>County</i>	<i>Prod Code</i>	<i>Total Samples</i>	<i>Samples in Violation</i>	<i>%</i>	<i>Test Violation Total</i>	<i>Total Volume (Gals)</i>	<i>Total in Violation</i>
Anderson							
	D	17	1	5.88	1	70,598.00	1,897
	G	67	1	1.49	1	235,249.00	4,213
	K	8	0	0.00	0	12,729.00	0
	Total:	92	2	2.17	2	318,576.00	6,110
Bedford							
	AG	1	0	0.00	0	4,000.00	0
	D	24	1	4.17	1	70,081.90	356
	G	49	0	0.00	0	138,832.20	0
	JF	1	0	0.00	0	11,778.00	0
	K	11	4	36.36	6	6,033.00	667
	Total:	86	5	5.81	7	230,725.10	1,023
Benton							
	D	7	0	0.00	0	18,589.00	0
	G	25	0	0.00	0	64,401.00	0
	K	2	0	0.00	0	7,104.00	0
	LPG	1	0	0.00	0	250.00	0
	Total:	35	0	0.00	0	90,344.00	0
Bledsoe							
	D	7	1	14.29	1	23,281.00	425
	G	17	0	0.00	0	47,047.00	0
	K	3	0	0.00	0	2,102.00	0
	Total:	27	1	3.70	1	72,430.00	425
Blount							
	D	34	0	0.00	0	77,566.00	0

Tennessee Department of Agriculture County Summary Short Report

PULL DATE ranges from 7/1/2004 TO 6/30/2005

Today: 01/20/2006

<i>County</i>	<i>Prod Code</i>	<i>Total Samples</i>	<i>Samples in Violation</i>	<i>%</i>	<i>Test Violation Total</i>	<i>Total Volume (Gals)</i>	<i>Total in Violation</i>
	G	99	1	1.01	1	366,160.00	7,121
	K	14	1	7.14	1	16,416.00	1,887
	LPG	1	0	0.00		7,582.00	0
	Total:	148	2	1.35	2	467,724.00	9,008
Bradley	AG	1	0	0.00	0	4,329.00	0
	D	32	3	9.38	3	92,201.00	3,588
	G	88	4	4.55	4	387,447.00	6,268
	K	13	0	0.00	0	14,424.00	0
	Total:	134	7	5.22	7	498,401.00	9,856
Campbell	D	16	2	12.50	2	87,325.00	2,376
	G	67	7	10.45	7	280,309.00	34,181
	K	9	0	0.00	0	13,222.00	0
	Total:	92	9	9.78	9	380,856.00	36,557
Cannon	D	4	0	0.00	0	9,756.00	0
	G	13	0	0.00	0	30,864.00	0
	K	2	0	0.00	0	2,189.00	0
	Total:	19	0	0.00	0	42,809.00	0
Carroll	AG	1	0	0.00	0	5,979.00	0
	D	6	0	0.00	0	62,626.00	0
	G	38	1	2.63	1	95,553.00	1,428

Tennessee Department of Agriculture County Summary Short Report

PULL DATE ranges from 7/1/2004 TO 6/30/2005

Today: 01/20/2006

<i>County</i>	<i>Prod Code</i>	<i>Total Samples</i>	<i>Samples in Violation</i>	<i>%</i>	<i>Test Violation Total</i>	<i>Total Volume (Gals)</i>	<i>Total in Violation</i>
	JF	1	0	0.00	0	5,725.00	0
	K	3	1	33.33	2	576.00	253
	Total:	49	2	4.08	3	170,459.00	1,681
Carter							
	D	14	0	0.00	0	22,143.00	0
	G	48	3	6.25	3	159,839.00	3,311
	K	7	1	14.29	1	4,543.00	297
	Total:	69	4	5.80	4	186,525.00	3,608
Cheatham							
	D	15	0	0.00	0	25,096.51	0
	G	30	0	0.00	0	79,607.00	0
	K	12	0	0.00	0	8,879.00	0
	Total:	57	0	0.00	0	113,582.51	0
Chester							
	D	9	0	0.00	0	23,933.00	0
	G	16	0	0.00	0	41,038.00	0
	K	1	0	0.00	0	784.00	0
	Total:	26	0	0.00	0	65,755.00	0
Claiborne							
	D	11	0	0.00	0	18,248.00	0
	G	38	0	0.00	0	108,590.00	0
	K	8	0	0.00	0	7,266.00	0
	Total:	57	0	0.00	0	134,104.00	0
Clay							
	D	13	1	7.69	1	17,765.00	686

Tennessee Department of Agriculture County Summary Short Report

PULL DATE ranges from 7/1/2004 TO 6/30/2005

Today: 01/20/2006

<i>County</i>	<i>Prod Code</i>	<i>Total Samples</i>	<i>Samples in Violation</i>	<i>%</i>	<i>Test Violation Total</i>	<i>Total Volume (Gals)</i>	<i>Total in Violation</i>
	G	21	0	0.00	0	33,219.00	0
	K	5	1	20.00	1	1,608.00	474
	Total:	39	2	5.13	2	52,592.00	1,160
Cocke	D	15	2	13.33	2	51,702.00	4,290
	G	64	0	0.00	0	222,769.00	0
	K	3	1	33.33	1	2,114.00	1,467
	Total:	82	3	3.66	3	276,585.00	5,757
Coffee	AG	1	0	0.00	0	1,349.00	0
	D	28	3	10.71	3	133,467.00	2,251
	G	61	1	1.64	1	198,195.00	2,698
	K	19	0	0.00	0	17,543.00	0
	Total:	109	4	3.67	4	350,554.00	4,949
Crockett	D	6	0	0.00	0	21,984.00	0
	G	23	3	13.04	3	50,911.00	1,746
	K	1	0	0.00	0	350.00	0
	Total:	30	3	10.00	3	73,245.00	1,746
Cumberland	AG	4	0	0.00	0	7,185.00	0
	D	29	2	6.90	2	79,997.00	2,668
	G	73	0	0.00	0	216,189.00	0
	JF	3	0	0.00	0	15,164.00	0

Tennessee Department of Agriculture County Summary Short Report

PULL DATE ranges from 7/1/2004 TO 6/30/2005

Today: 01/20/2006

<i>County</i>	<i>Prod Code</i>	<i>Total Samples</i>	<i>Samples in Violation</i>	<i>%</i>	<i>Test Violation Total</i>	<i>Total Volume (Gals)</i>	<i>Total in Violation</i>
	K	19	2	10.53	3	19,117.00	211
	LPG	2	0	0.00		66,550.00	0
	Total:	130	4	3.08	5	404,202.00	2,879
Davidson	AG	4	0	0.00	0	20,510.00	0
	D	172	3	1.74	3	32,954,878.00	4,193
	G	461	8	1.74	10	69,276,214.00	1,076,039
	JF	5	0	0.00	0	1,354,834.00	0
	K	45	2	4.44	2	324,121.00	918
	LPG	1	0	0.00		650.00	0
	Total:	688	13	1.89	15	103,931,207.00	1,081,150
Decatur	AG	1	0	0.00	0	766.00	0
	D	7	1	14.29	1	18,138.00	698
	G	26	0	0.00	0	70,429.00	0
	JF	1	0	0.00	0	2,467.00	0
	K	2	0	0.00	0	1,737.00	0
	Total:	37	1	2.70	1	93,537.00	698
Dekalb	AG	1	0	0.00	0	4,805.00	0
	D	9	1	11.11	1	11,181.00	327
	G	34	1	2.94	1	93,184.00	2,674
	K	4	0	0.00	0	1,688.00	0

Tennessee Department of Agriculture County Summary Short Report

PULL DATE ranges from 7/1/2004 TO 6/30/2005

Today: 01/20/2006

<i>County</i>	<i>Prod Code</i>	<i>Total Samples</i>	<i>Samples in Violation</i>	<i>%</i>	<i>Test Violation Total</i>	<i>Total Volume (Gals)</i>	<i>Total in Violation</i>
	Total:	48	2	4.17	2	110,858.00	3,001
Dickson	AG	1	0	0.00	0	2,569.00	0
	D	32	2	6.25	2	69,334.00	1,826
	G	62	7	11.29	11	153,751.00	9,964
	JF	1	0	0.00	0	1,515.00	0
	K	16	1	6.25	2	20,135.00	182
	LPG	1	0	0.00		1,470.00	0
	Total:	113	10	8.85	15	248,774.00	11,972
Dyer	AG	2	0	0.00	0	15,944.00	0
	D	13	0	0.00	0	38,007.00	0
	G	50	1	2.00	2	114,618.00	846
	JF	2	0	0.00	0	14,894.00	0
	K	6	0	0.00	0	2,030.00	0
	Total:	73	1	1.37	2	185,493.00	846
Fayette	D	12	0	0.00	0	57,453.00	0
	G	33	1	3.03	1	78,602.00	1,654
	K	3	0	0.00	0	2,741.00	0
	Total:	48	1	2.08	1	138,796.00	1,654
Fentress	AG	1	0	0.00	0	3,000.00	0
	D	13	0	0.00	0	44,907.00	0

Tennessee Department of Agriculture County Summary Short Report

PULL DATE ranges from 7/1/2004 TO 6/30/2005

Today: 01/20/2006

<i>County</i>	<i>Prod Code</i>	<i>Total Samples</i>	<i>Samples in Violation</i>	<i>%</i>	<i>Test Violation Total</i>	<i>Total Volume (Gals)</i>	<i>Total in Violation</i>
	G	24	0	0.00	0	55,303.00	0
	K	6	0	0.00	0	4,040.00	0
	LPG	1	0	0.00	0	13,200.00	0
	Total:	45	0	0.00	0	120,450.00	0
Franklin	AG	2	0	0.00	0	7,971.00	0
	D	14	0	0.00	0	40,446.00	0
	FO	1	0	0.00	0	2,758.00	0
	G	50	0	0.00	0	158,140.00	0
	JF	1	0	0.00	0	2,554.00	0
	K	14	2	14.29	2	5,500.00	822
	Total:	82	2	2.44	2	217,369.00	822
Gibson	D	16	2	12.50	2	56,741.00	862
	G	46	0	0.00	0	236,379.00	0
	K	3	0	0.00	0	1,198.00	0
	Total:	65	2	3.08	2	294,318.00	862
Giles	AG	1	0	0.00	0	1,600.00	0
	D	22	1	4.55	1	93,887.00	2,646
	G	46	2	4.35	2	145,339.22	3,882
	JF	1	0	0.00	0	3,500.00	0
	K	7	1	14.29	2	3,572.00	302

Tennessee Department of Agriculture County Summary Short Report

PULL DATE ranges from 7/1/2004 TO 6/30/2005

Today: 01/20/2006

<i>County</i>	<i>Prod Code</i>	<i>Total Samples</i>	<i>Samples in Violation</i>	<i>%</i>	<i>Test Violation Total</i>	<i>Total Volume (Gals)</i>	<i>Total in Violation</i>
	Total:	77	4	5.19	5	247,898.22	6,830
Grainger	D	6	0	0.00	0	12,170.00	0
	G	23	2	8.70	2	55,994.00	898
	K	3	0	0.00	0	2,247.00	0
	Total:	32	2	6.25	2	70,411.00	898
Greene	D	38	1	2.63	1	98,532.00	1,506
	G	82	2	2.44	2	275,841.00	6,716
	K	9	2	22.22	2	6,578.00	449
	LPG	1	0	0.00		3,300.00	0
	Total:	130	5	3.85	5	384,251.00	8,671
Grundy	D	8	0	0.00	0	11,007.00	0
	G	20	0	0.00	0	52,998.00	0
	K	5	1	20.00	1	2,327.00	456
	Total:	33	1	3.03	1	66,332.00	456
Hamblen	D	20	1	5.00	1	50,169.00	2,790
	G	53	1	1.89	1	172,239.00	6,129
	K	6	2	33.33	2	7,371.00	2,474
	Total:	79	4	5.06	4	229,779.00	11,393
Hamilton	AG	4	0	0.00	0	14,511.00	0
	D	73	4	5.48	4	9,246,235.00	15,255

Tennessee Department of Agriculture County Summary Short Report

PULL DATE ranges from 7/1/2004 TO 6/30/2005

Today: 01/20/2006

<i>County</i>	<i>Prod Code</i>	<i>Total Samples</i>	<i>Samples in Violation</i>	<i>%</i>	<i>Test Violation Total</i>	<i>Total Volume (Gals)</i>	<i>Total in Violation</i>
	G	310	4	1.29	4	18,395,719.00	19,731
	JF	1	0	0.00	0	2,600.00	0
	K	20	0	0.00	0	29,926.00	0
	Total:	408	8	1.96	8	27,688,991.00	34,986
Hancock							
	D	4	1	25.00	1	4,277.00	1,728
	G	10	0	0.00	0	26,182.00	0
	K	4	0	0.00	0	2,115.00	0
	Total:	18	1	5.56	1	32,574.00	1,728
Hardeman							
	AG	1	0	0.00	0	422.00	0
	D	17	0	0.00	0	56,509.00	0
	G	48	1	2.08	1	100,936.00	920
	K	2	0	0.00	0	677.00	0
	Total:	68	1	1.47	1	158,544.00	920
Hardin							
	AG	1	0	0.00	0	2,546.00	0
	D	17	2	11.76	2	74,099.00	8,376
	G	39	0	0.00	0	104,796.00	0
	K	3	0	0.00	0	3,346.00	0
	Total:	60	2	3.33	2	184,787.00	8,376
Hawkins							
	D	14	1	7.14	1	30,342.00	540
	G	41	1	2.44	1	142,236.00	3,062

Tennessee Department of Agriculture County Summary Short Report

PULL DATE ranges from 7/1/2004 TO 6/30/2005

Today: 01/20/2006

<i>County</i>	<i>Prod Code</i>	<i>Total Samples</i>	<i>Samples in Violation</i>	<i>%</i>	<i>Test Violation Total</i>	<i>Total Volume (Gals)</i>	<i>Total in Violation</i>
	K	8	1	12.50	1	8,105.00	1,201
	Total:	63	3	4.76	3	180,683.00	4,803
Haywood	D	8	0	0.00	0	38,463.00	0
	G	21	2	9.52	2	81,318.00	146
	K	2	0	0.00	0	3,158.00	0
	Total:	31	2	6.45	2	122,939.00	146
Henderson	AG	1	0	0.00	0	3,687.00	0
	D	12	0	0.00	0	56,958.00	0
	G	31	1	3.23	1	100,523.00	650
	JF	1	0	0.00	0	5,642.00	0
	K	3	0	0.00	0	5,518.00	0
	Total:	48	1	2.08	1	172,328.00	650
Henry	AG	1	0	0.00	0	0.00	0
	D	14	0	0.00	0	44,321.00	0
	G	44	0	0.00	0	108,764.00	0
	JF	1	0	0.00	0	0.00	0
	K	5	1	20.00	1	7,714.00	764
	Total:	65	1	1.54	1	160,799.00	764
Hickman	AG	1	0	0.00	0	1,865.00	0
	D	10	0	0.00	0	36,152.00	0

Tennessee Department of Agriculture County Summary Short Report

PULL DATE ranges from 7/1/2004 TO 6/30/2005

Today: 01/20/2006

<i>County</i>	<i>Prod Code</i>	<i>Total Samples</i>	<i>Samples in Violation</i>	<i>%</i>	<i>Test Violation Total</i>	<i>Total Volume (Gals)</i>	<i>Total in Violation</i>
	G	29	1	3.45	1	122,675.00	328
	K	5	0	0.00	0	2,253.00	0
	Total:	45	1	2.22	1	162,945.00	328
Houston	D	3	0	0.00	0	6,056.00	0
	G	10	1	10.00	1	20,012.00	3,759
	K	4	1	25.00	1	1,625.00	179
	Total:	17	2	11.76	2	27,693.00	3,938
Humphreys	D	13	0	0.00	0	36,155.25	0
	G	27	0	0.00	0	88,768.00	0
	K	2	0	0.00	0	1,048.00	0
	Total:	42	0	0.00	0	125,971.25	0
Jackson	D	4	0	0.00	0	1,231.00	0
	G	21	0	0.00	0	35,912.00	0
	K	1	0	0.00	0	509.00	0
	Total:	26	0	0.00	0	37,652.00	0
Jefferson	D	15	0	0.00	0	160,726.00	0
	G	37	0	0.00	0	175,141.00	0
	K	4	0	0.00	0	2,596.00	0
	Total:	56	0	0.00	0	338,463.00	0
Johnson	D	4	1	25.00	1	4,174.00	505

Tennessee Department of Agriculture County Summary Short Report

PULL DATE ranges from 7/1/2004 TO 6/30/2005

Today: 01/20/2006

<i>County</i>	<i>Prod Code</i>	<i>Total Samples</i>	<i>Samples in Violation</i>	<i>%</i>	<i>Test Violation Total</i>	<i>Total Volume (Gals)</i>	<i>Total in Violation</i>
	G	17	0	0.00	0	27,278.00	0
	K	4	0	0.00	0	6,392.00	0
	Total:	25	1	4.00	1	37,844.00	505
Knox							
	D	137	4	2.92	4	13,642,097.00	7,038
	G	299	4	1.34	5	38,776,192.00	11,926
	K	45	0	0.00	0	1,515,857.00	0
	Total:	481	8	1.66	9	53,934,146.00	18,964
Lake							
	D	3	1	33.33	1	7,186.00	769
	G	6	1	16.67	1	16,569.00	707
	K	1	0	0.00	0	445.00	0
	Total:	10	2	20.00	2	24,200.00	1,476
Lauderdale							
	D	8	0	0.00	0	16,597.00	0
	G	33	2	6.06	4	70,776.00	2,854
	K	1	0	0.00	0	916.00	0
	Total:	42	2	4.76	4	88,289.00	2,854
Lawrence							
	AG	1	0	0.00	0	2,852.00	0
	D	20	3	15.00	3	48,304.00	4,675
	G	57	0	0.00	0	196,601.70	0
	JF	1	0	0.00	0	2,600.00	0
	K	6	1	16.67	1	3,098.00	306

Tennessee Department of Agriculture County Summary Short Report

PULL DATE ranges from 7/1/2004 TO 6/30/2005

Today: 01/20/2006

<i>County</i>	<i>Prod Code</i>	<i>Total Samples</i>	<i>Samples in Violation</i>	<i>%</i>	<i>Test Violation Total</i>	<i>Total Volume (Gals)</i>	<i>Total in Violation</i>
	Total:	85	4	4.71	4	253,455.70	4,981
Lewis	D	5	0	0.00	0	11,277.00	0
	G	11	0	0.00	0	37,225.00	0
	K	2	0	0.00	0	1,584.00	0
	Total:	18	0	0.00	0	50,086.00	0
Lincoln	AG	1	0	0.00	0	4,152.00	0
	D	20	1	5.00	1	57,868.00	229
	G	48	2	4.17	2	124,495.60	2,974
	JF	1	0	0.00	0	35,715.00	0
	K	8	2	25.00	2	5,037.00	349
	Total:	78	5	6.41	5	227,267.60	3,552
Loudon	D	18	3	16.67	3	45,468.00	5,000
	G	47	0	0.00	0	132,401.00	0
	K	9	1	11.11	1	14,738.00	1,470
	LPG	1	0	0.00		21,600.00	0
	Total:	75	4	5.33	4	214,207.00	6,470
McMinn	AG	1	0	0.00	0	4,300.00	0
	D	18	0	0.00	0	64,562.00	0
	G	56	1	1.79	1	217,977.00	4,276
	JF	1	0	0.00	0	8,400.00	0

Tennessee Department of Agriculture County Summary Short Report

PULL DATE ranges from 7/1/2004 TO 6/30/2005

Today: 01/20/2006

<i>County</i>	<i>Prod Code</i>	<i>Total Samples</i>	<i>Samples in Violation</i>	<i>%</i>	<i>Test Violation Total</i>	<i>Total Volume (Gals)</i>	<i>Total in Violation</i>
	K	11	4	36.36	4	7,709.00	3,815
	Total:	87	5	5.75	5	302,948.00	8,091
McNairy	AG	1	0	0.00	0	1,951.00	0
	D	11	0	0.00	0	37,859.00	0
	G	27	0	0.00	0	65,583.00	0
	JF	1	0	0.00	0	2,000.00	0
	Total:	40	0	0.00	0	107,393.00	0
Macon	D	10	0	0.00	0	18,126.00	0
	G	19	0	0.00	0	51,412.00	0
	K	3	0	0.00	0	4,605.00	0
	Total:	32	0	0.00	0	74,143.00	0
Madison	AG	1	0	0.00	0	9,271.00	0
	D	28	3	10.71	3	163,075.71	4,578
	G	92	2	2.17	2	317,019.00	8,492
	JF	1	0	0.00	0	1,250.00	0
	K	9	0	0.00	0	9,940.00	0
	Total:	131	5	3.82	5	500,555.71	13,070
Marion	AG	1	0	0.00	0	2,387.00	0
	D	10	0	0.00	0	43,588.00	0
	G	38	0	0.00	0	116,570.00	0

Tennessee Department of Agriculture County Summary Short Report

PULL DATE ranges from 7/1/2004 TO 6/30/2005

Today: 01/20/2006

<i>County</i>	<i>Prod Code</i>	<i>Total Samples</i>	<i>Samples in Violation</i>	<i>%</i>	<i>Test Violation Total</i>	<i>Total Volume (Gals)</i>	<i>Total in Violation</i>
	JF	1	0	0.00	0	3,926.00	0
	K	15	2	13.33	2	10,441.00	1,847
	Total:	65	2	3.08	2	176,912.00	1,847
Marshall	AG	1	0	0.00	0	1,496.00	0
	D	22	1	4.55	1	52,415.00	381
	G	36	0	0.00	0	98,323.00	0
	JF	1	0	0.00	0	7,522.00	0
	K	5	0	0.00	0	4,019.00	0
	Total:	65	1	1.54	1	163,775.00	381
Maury	AG	1	0	0.00	0	2,300.00	0
	D	27	1	3.70	1	102,622.20	1,872
	G	73	1	1.37	1	233,104.75	656
	JF	1	0	0.00	0	2,500.00	0
	K	12	0	0.00	0	11,054.00	0
	LPG	1	0	0.00	0	85.00	0
	Total:	115	2	1.74	2	351,665.95	2,528
Meigs	D	3	0	0.00	0	5,300.00	0
	G	14	0	0.00	0	35,664.00	0
	K	4	0	0.00	0	4,005.00	0
	Total:	21	0	0.00	0	44,969.00	0

Tennessee Department of Agriculture County Summary Short Report

PULL DATE ranges from 7/1/2004 TO 6/30/2005

Today: 01/20/2006

<i>County</i>	<i>Prod Code</i>	<i>Total Samples</i>	<i>Samples in Violation</i>	<i>%</i>	<i>Test Violation Total</i>	<i>Total Volume (Gals)</i>	<i>Total in Violation</i>
Monroe							
	AG	1	0	0.00	0	2,694.00	0
	D	17	0	0.00	0	47,939.00	0
	G	50	1	2.00	1	159,633.00	1,800
	K	14	3	21.43	3	15,580.00	4,143
	Total:	82	4	4.88	4	225,846.00	5,943
Montgomery							
	D	47	3	6.38	3	157,616.00	4,853
	FO	1	0	0.00	0	1,712.00	0
	G	97	0	0.00	0	335,804.00	0
	K	20	4	20.00	4	9,941.00	776
	Total:	165	7	4.24	7	505,073.00	5,629
Moore							
	D	4	0	0.00	0	13,247.00	0
	G	6	0	0.00	0	17,812.00	0
	K	1	0	0.00	0	371.00	0
	Total:	11	0	0.00	0	31,430.00	0
Morgan							
	D	2	0	0.00	0	2,414.00	0
	G	26	0	0.00	0	46,489.00	0
	K	4	0	0.00	0	2,179.00	0
	Total:	32	0	0.00	0	51,082.00	0
Obion							
	AG	1	0	0.00	0	7,062.00	0
	D	10	1	10.00	1	33,998.00	374

Tennessee Department of Agriculture County Summary Short Report

PULL DATE ranges from 7/1/2004 TO 6/30/2005

Today: 01/20/2006

<i>County</i>	<i>Prod Code</i>	<i>Total Samples</i>	<i>Samples in Violation</i>	<i>%</i>	<i>Test Violation Total</i>	<i>Total Volume (Gals)</i>	<i>Total in Violation</i>
	G	28	1	3.57	2	90,361.00	4,890
	JF	1	0	0.00	0	3,349.00	0
	K	7	0	0.00	0	2,798.00	0
	Total:	47	2	4.26	3	137,568.00	5,264
Overton							
	D	16	1	6.25	1	45,198.00	164
	G	48	1	2.08	1	100,825.00	1,687
	K	4	0	0.00	0	3,335.00	0
	Total:	68	2	2.94	2	149,358.00	1,851
Perry							
	D	6	0	0.00	0	11,608.63	0
	G	14	0	0.00	0	19,541.64	0
	K	1	0	0.00	0	1,005.00	0
	Total:	21	0	0.00	0	32,155.27	0
Pickett							
	D	5	0	0.00	0	11,583.00	0
	G	14	0	0.00	0	25,600.00	0
	K	2	0	0.00	0	718.00	0
	Total:	21	0	0.00	0	37,901.00	0
Polk							
	D	13	0	0.00	0	36,287.00	0
	G	20	0	0.00	0	56,075.00	0
	K	2	1	50.00	1	955.00	344
	Total:	35	1	2.86	1	93,317.00	344

Tennessee Department of Agriculture County Summary Short Report

PULL DATE ranges from 7/1/2004 TO 6/30/2005

Today: 01/20/2006

<i>County</i>	<i>Prod Code</i>	<i>Total Samples</i>	<i>Samples in Violation</i>	<i>%</i>	<i>Test Violation Total</i>	<i>Total Volume (Gals)</i>	<i>Total in Violation</i>
Putnam							
	D	33	0	0.00	0	133,543.00	0
	G	73	0	0.00	0	206,256.00	0
	K	18	4	22.22	4	13,656.00	2,973
	LPG	1	0	0.00		25,979.00	0
	Total:	125	4	3.20	4	379,434.00	2,973
Rhea							
	AG	1	0	0.00	0	3,936.00	0
	D	15	0	0.00	0	45,829.00	0
	G	42	3	7.14	3	102,391.00	2,176
	JF	1	0	0.00	0	5,228.00	0
	K	4	0	0.00	0	4,142.00	0
	Total:	63	3	4.76	3	161,526.00	2,176
Roane							
	D	21	0	0.00	0	52,202.00	0
	G	57	4	7.02	4	169,026.00	3,798
	K	17	0	0.00	0	19,411.00	0
	Total:	95	4	4.21	4	240,639.00	3,798
Robertson							
	AG	1	0	0.00	0	8,198.00	0
	D	31	1	3.23	1	124,071.00	688
	G	59	2	3.39	2	185,419.00	2,371
	JF	1	0	0.00	0	5,181.00	0
	K	25	3	12.00	3	13,165.00	1,172

Tennessee Department of Agriculture County Summary Short Report

PULL DATE ranges from 7/1/2004 TO 6/30/2005

Today: 01/20/2006

<i>County</i>	<i>Prod Code</i>	<i>Total Samples</i>	<i>Samples in Violation</i>	<i>%</i>	<i>Test Violation Total</i>	<i>Total Volume (Gals)</i>	<i>Total in Violation</i>
	Total:	117	6	5.13	6	336,034.00	4,231
Rutherford	AG	3	0	0.00	0	17,967.60	0
	D	39	4	10.26	4	259,342.00	3,571
	G	129	2	1.55	2	505,406.00	1,116
	JF	3	0	0.00	0	34,797.50	0
	K	34	1	2.94	1	31,648.00	428
	Total:	208	7	3.37	7	849,161.10	5,115
Scott	AG	1	0	0.00	0	4,267.00	0
	D	10	1	10.00	1	32,867.00	1,082
	G	27	0	0.00	0	80,149.00	0
	JF	1	0	0.00	0	10,512.00	0
	K	7	1	14.29	1	4,608.00	361
	Total:	46	2	4.35	2	132,403.00	1,443
Sequatchie	D	10	1	10.00	1	33,752.00	1,282
	G	21	0	0.00	0	57,974.00	0
	K	3	0	0.00	0	2,557.00	0
	Total:	34	1	2.94	1	94,283.00	1,282
Sevier	D	37	0	0.00	0	103,271.00	0
	G	110	0	0.00	0	433,856.00	0
	K	5	0	0.00	0	4,889.00	0

Tennessee Department of Agriculture County Summary Short Report

PULL DATE ranges from 7/1/2004 TO 6/30/2005

Today: 01/20/2006

<i>County</i>	<i>Prod Code</i>	<i>Total Samples</i>	<i>Samples in Violation</i>	<i>%</i>	<i>Test Violation Total</i>	<i>Total Volume (Gals)</i>	<i>Total in Violation</i>
	Total:	152	0	0.00	0	542,016.00	0
Shelby	AG	12	0	0.00	0	3,400,699.00	0
	D	88	4	4.55	4	16,762,556.50	295,136
	G	456	8	1.75	12	48,476,563.80	16,306
	JF	13	0	0.00	0	6,109,279.00	0
	K	5	0	0.00	0	14,415.00	0
	Total:	574	12	2.09	16	74,763,513.30	311,442
Smith	D	15	0	0.00	0	41,304.00	0
	G	24	0	0.00	0	69,962.00	0
	K	2	0	0.00	0	444.00	0
	Total:	41	0	0.00	0	111,710.00	0
Stewart	D	11	1	9.09	1	8,842.00	250
	G	23	2	8.70	2	37,279.00	3,322
	K	5	0	0.00	0	2,068.00	0
	Total:	39	3	7.69	3	48,189.00	3,572
Sullivan	D	29	1	3.45	1	90,319.00	1,872
	G	105	2	1.90	2	348,225.00	854
	K	22	2	9.09	2	16,259.00	1,052
	LPG	1	0	0.00		13,000.00	0
	Total:	157	5	3.18	5	467,803.00	3,778

Tennessee Department of Agriculture County Summary Short Report

PULL DATE ranges from 7/1/2004 TO 6/30/2005

Today: 01/20/2006

<i>County</i>	<i>Prod Code</i>	<i>Total Samples</i>	<i>Samples in Violation</i>	<i>%</i>	<i>Test Violation Total</i>	<i>Total Volume (Gals)</i>	<i>Total in Violation</i>
Sumner							
	AG	2	0	0.00	0	9,192.00	0
	D	36	1	2.78	1	88,756.00	1,784
	G	100	0	0.00	0	267,709.00	0
	JF	2	0	0.00	0	9,124.00	0
	K	23	2	8.70	2	16,558.00	1,795
	Total:	163	3	1.84	3	391,339.00	3,579
Tipton							
	AG	1	0	0.00	0	6,000.00	0
	D	11	0	0.00	0	38,268.00	0
	G	37	0	0.00	0	108,619.00	0
	JF	1	0	0.00	0	2,500.00	0
	K	4	0	0.00	0	4,308.00	0
	Total:	54	0	0.00	0	159,695.00	0
Trousdale							
	D	3	0	0.00	0	13,722.00	0
	G	6	0	0.00	0	24,345.00	0
	Total:	9	0	0.00	0	38,067.00	0
Unicoi							
	D	7	1	14.29	1	12,587.00	199
	G	16	0	0.00	0	43,354.00	0
	K	4	0	0.00	0	1,613.00	0
	Total:	27	1	3.70	1	57,554.00	199
Union							
	D	8	0	0.00	0	11,788.00	0

Tennessee Department of Agriculture County Summary Short Report

PULL DATE ranges from 7/1/2004 TO 6/30/2005

Today: 01/20/2006

<i>County</i>	<i>Prod Code</i>	<i>Total Samples</i>	<i>Samples in Violation</i>	<i>%</i>	<i>Test Violation Total</i>	<i>Total Volume (Gals)</i>	<i>Total in Violation</i>
	G	24	1	4.17	1	56,716.00	200
	K	5	0	0.00	0	3,661.00	0
	Total:	37	1	2.70	1	72,165.00	200
Van Buren	D	4	0	0.00	0	10,199.00	0
	G	9	0	0.00	0	18,490.00	0
	K	2	1	50.00	1	853.00	505
	Total:	15	1	6.67	1	29,542.00	505
Warren	AG	1	0	0.00	0	1,979.00	0
	D	19	3	15.79	3	84,097.00	5,541
	G	56	3	5.36	3	185,169.00	3,434
	K	13	1	7.69	1	9,539.00	888
	Total:	89	7	7.87	7	280,784.00	9,863
Washington	D	40	1	2.50	1	175,749.00	2,893
	G	94	2	2.13	2	354,539.00	9,226
	K	23	3	13.04	3	79,010.00	1,635
	Total:	157	6	3.82	6	609,298.00	13,754
Wayne	D	10	1	10.00	1	20,687.00	357
	G	28	0	0.00	0	55,367.60	0
	K	2	0	0.00	0	504.00	0
	Total:	40	1	2.50	1	76,558.60	357

Tennessee Department of Agriculture County Summary Short Report

PULL DATE ranges from 7/1/2004 TO 6/30/2005

Today: 01/20/2006

<i>County</i>	<i>Prod Code</i>	<i>Total Samples</i>	<i>Samples in Violation</i>	<i>%</i>	<i>Test Violation Total</i>	<i>Total Volume (Gals)</i>	<i>Total in Violation</i>
Weakley							
	D	24	2	8.33	2	56,301.00	724
	G	32	0	0.00	0	127,848.00	0
	K	1	0	0.00	0	145.00	0
	Total:	57	2	3.51	2	184,294.00	724
White							
	AG	2	0	0.00	0	12,230.00	0
	D	20	3	15.00	3	53,364.00	1,580
	G	33	1	3.03	1	98,351.00	1,045
	JF	2	0	0.00	0	8,420.00	0
	K	6	1	16.67	1	3,539.00	725
	Total:	63	5	7.94	5	175,904.00	3,350
Williamson							
	D	32	0	0.00	0	125,234.00	0
	G	84	2	2.38	2	337,227.60	9,273
	K	28	2	7.14	2	21,432.00	356
	Total:	144	4	2.78	4	483,893.60	9,629
Wilson							
	AG	1	0	0.00	0	4,234.00	0
	D	29	2	6.90	2	169,272.00	400
	G	73	2	2.74	4	243,699.00	5,735
	JF	1	0	0.00	0	8,139.00	0
	K	14	2	14.29	2	9,086.00	2,070
	Total:	118	6	5.08	8	434,430.00	8,205

Kerosene and Motor Fuel Enforcement Summary

July 1, 2004 – June 30, 2005

Civil Penalties:

Total Penalties Issued:	153
Amount Issued:	\$82,605
Total Collections:	\$86,280

Product Stop Sales:

Total Stop-Sales:	254
Total Gallons Stop-Sold:	1,638,960

Administrative Hearings

There were no administrative hearings held in FY '05; all cases were settled without a formal legal hearing.

RUN DATE/TIME 09/16/05 06:32
 ETWMI5 VA 1 600000

KEROSENE & MOTOR FUEL INSPECTION SUMMARY
 CLIENT 25 - TENNESSEE DEPT OF AGRICULTURE
 REGION 1 - WEST TENNESSEE
 FROM 07/01/04 - THRU 06/30/05

REPORT # 971

COUNTY: 3 - BENTON

			NO.	NO.	%		
TOTAL ESTABLISHMENTS:	25	TYPE TEST	PERFORMED	FAIL	FAIL	LABEL VERIFICATIONS	FILL ID VERIFICATIONS
INSPECTED:	25	=====	=====	=====	=====	=====	=====
		ALCOHOL	0	0	0.0	NO. PERFORMED: 285	NO. PERFORMED: 70
VIOLATION NOTICES:	1	VISUAL	70	0	0.0	NO. VIOLATIONS: 0	NO. VIOLATIONS: 1
STOP SALES:	0	WATER	66	0	0.0		

COUNTY: 9 - CARROLL

			NO.	NO.	%		
TOTAL ESTABLISHMENTS:	35	TYPE TEST	PERFORMED	FAIL	FAIL	LABEL VERIFICATIONS	FILL ID VERIFICATIONS
INSPECTED:	35	=====	=====	=====	=====	=====	=====
		ALCOHOL	0	0	0.0	NO. PERFORMED: 359	NO. PERFORMED: 102
VIOLATION NOTICES:	14	VISUAL	102	0	0.0	NO. VIOLATIONS: 0	NO. VIOLATIONS: 14
STOP SALES:	0	WATER	98	0	0.0		

COUNTY: 12 - CHESTER

			NO.	NO.	%		
TOTAL ESTABLISHMENTS:	17	TYPE TEST	PERFORMED	FAIL	FAIL	LABEL VERIFICATIONS	FILL ID VERIFICATIONS
INSPECTED:	17	=====	=====	=====	=====	=====	=====
		ALCOHOL	0	0	0.0	NO. PERFORMED: 225	NO. PERFORMED: 53
VIOLATION NOTICES:	9	VISUAL	53	0	0.0	NO. VIOLATIONS: 0	NO. VIOLATIONS: 9
STOP SALES:	0	WATER	51	0	0.0		

COUNTY: 17 - CROCKETT

			NO.	NO.	%		
TOTAL ESTABLISHMENTS:	19	TYPE TEST	PERFORMED	FAIL	FAIL	LABEL VERIFICATIONS	FILL ID VERIFICATIONS
INSPECTED:	19	=====	=====	=====	=====	=====	=====
		ALCOHOL	0	0	0.0	NO. PERFORMED: 175	NO. PERFORMED: 57
VIOLATION NOTICES:	0	VISUAL	57	0	0.0	NO. VIOLATIONS: 0	NO. VIOLATIONS: 0
STOP SALES:	0	WATER	46	0	0.0		

COUNTY: 20 - DECATUR

			NO.	NO.	%		
TOTAL ESTABLISHMENTS:	21	TYPE TEST	PERFORMED	FAIL	FAIL	LABEL VERIFICATIONS	FILL ID VERIFICATIONS
INSPECTED:	21	=====	=====	=====	=====	=====	=====
		ALCOHOL	0	0	0.0	NO. PERFORMED: 268	NO. PERFORMED: 65
VIOLATION NOTICES:	3	VISUAL	65	0	0.0	NO. VIOLATIONS: 0	NO. VIOLATIONS: 3
STOP SALES:	0	WATER	57	0	0.0		

COUNTY: 23 - DYER

			NO.	NO.	%		
TOTAL ESTABLISHMENTS:	46	TYPE TEST	PERFORMED	FAIL	FAIL	LABEL VERIFICATIONS	FILL ID VERIFICATIONS
INSPECTED:	46	=====	=====	=====	=====	=====	=====
		ALCOHOL	0	0	0.0	NO. PERFORMED: 650	NO. PERFORMED: 146
VIOLATION NOTICES:	11	VISUAL	146	0	0.0	NO. VIOLATIONS: 0	NO. VIOLATIONS: 11
STOP SALES:	0	WATER	139	0	0.0		

COUNTY: 24 - FAYETTE

			NO.	NO.	%		
TOTAL ESTABLISHMENTS:	32	TYPE TEST	PERFORMED	FAIL	FAIL	LABEL VERIFICATIONS	FILL ID VERIFICATIONS
INSPECTED:	32	=====	=====	=====	=====	=====	=====
		ALCOHOL	0	0	0.0	NO. PERFORMED: 447	NO. PERFORMED: 98
VIOLATION NOTICES:	21	VISUAL	98	0	0.0	NO. VIOLATIONS: 4	NO. VIOLATIONS: 17
STOP SALES:	0	WATER	96	0	0.0		

COUNTY: 27 - GIBSON

			NO.	NO.	%		
TOTAL ESTABLISHMENTS:	45	TYPE TEST	PERFORMED	FAIL	FAIL	LABEL VERIFICATIONS	FILL ID VERIFICATIONS
INSPECTED:	45	=====	=====	=====	=====	=====	=====
		ALCOHOL	0	0	0.0	NO. PERFORMED: 648	NO. PERFORMED: 151
VIOLATION NOTICES:	12	VISUAL	151	0	0.0	NO. VIOLATIONS: 0	NO. VIOLATIONS: 12
STOP SALES:	0	WATER	144	0	0.0		

COUNTY: 35 - HARDEMAN

			NO.	NO.	%		
TOTAL ESTABLISHMENTS:	43	TYPE TEST	PERFORMED	FAIL	FAIL	LABEL VERIFICATIONS	FILL ID VERIFICATIONS
INSPECTED:	42	=====	=====	=====	=====	=====	=====
		ALCOHOL	0	0	0.0	NO. PERFORMED: 440	NO. PERFORMED: 136
VIOLATION NOTICES:	20	VISUAL	136	0	0.0	NO. VIOLATIONS: 3	NO. VIOLATIONS: 17
STOP SALES:	0	WATER	131	0	0.0		

COUNTY: 36 - HARDIN

			NO.	NO.	%		
TOTAL ESTABLISHMENTS:	39	TYPE TEST	PERFORMED	FAIL	FAIL	LABEL VERIFICATIONS	FILL ID VERIFICATIONS
INSPECTED:	39	=====	=====	=====	=====	=====	=====
		ALCOHOL	0	0	0.0	NO. PERFORMED: 441	NO. PERFORMED: 122
VIOLATION NOTICES:	15	VISUAL	122	0	0.0	NO. VIOLATIONS: 1	NO. VIOLATIONS: 14
STOP SALES:	0	WATER	118	0	0.0		

COUNTY: 38 - HAYWOOD

			NO.	NO.	%		
TOTAL ESTABLISHMENTS:	21	TYPE TEST	PERFORMED	FAIL	FAIL	LABEL VERIFICATIONS	FILL ID VERIFICATIONS
INSPECTED:	20	=====	=====	=====	=====	=====	=====
		ALCOHOL	0	0	0.0	NO. PERFORMED: 382	NO. PERFORMED: 64
VIOLATION NOTICES:	15	VISUAL	64	0	0.0	NO. VIOLATIONS: 2	NO. VIOLATIONS: 13
STOP SALES:	0	WATER	61	0	0.0		

COUNTY: 39 - HENDERSON

			NO.	NO.	%		
TOTAL ESTABLISHMENTS:	34	TYPE TEST	PERFORMED	FAIL	FAIL	LABEL VERIFICATIONS	FILL ID VERIFICATIONS
INSPECTED:	32	=====	=====	=====	=====	=====	=====
		ALCOHOL	0	0	0.0	NO. PERFORMED: 550	NO. PERFORMED: 113
VIOLATION NOTICES:	4	VISUAL	113	0	0.0	NO. VIOLATIONS: 4	NO. VIOLATIONS: 0
STOP SALES:	0	WATER	104	0	0.0		

COUNTY: 40 - HENRY

			NO.	NO.	%		
TOTAL ESTABLISHMENTS:	40	TYPE TEST	PERFORMED	FAIL	FAIL	LABEL VERIFICATIONS	FILL ID VERIFICATIONS
INSPECTED:	40	=====	=====	=====	=====	=====	=====
		ALCOHOL	0	0	0.0	NO. PERFORMED: 417	NO. PERFORMED: 118
VIOLATION NOTICES:	0	VISUAL	118	0	0.0	NO. VIOLATIONS: 0	NO. VIOLATIONS: 0
STOP SALES:	0	WATER	112	0	0.0		

COUNTY: 48 - LAKE

			NO.	NO.	%		
TOTAL ESTABLISHMENTS:	6	TYPE TEST	PERFORMED	FAIL	FAIL	LABEL VERIFICATIONS	FILL ID VERIFICATIONS
INSPECTED:	6	=====	=====	=====	=====	=====	=====
		ALCOHOL	0	0	0.0	NO. PERFORMED: 90	NO. PERFORMED: 23
VIOLATION NOTICES:	0	VISUAL	23	0	0.0	NO. VIOLATIONS: 0	NO. VIOLATIONS: 0
STOP SALES:	0	WATER	22	0	0.0		

COUNTY: 49 - LAUDERDALE

			NO.	NO.	%		
TOTAL ESTABLISHMENTS:	29	TYPE TEST	PERFORMED	FAIL	FAIL	LABEL VERIFICATIONS	FILL ID VERIFICATIONS
INSPECTED:	29	=====	=====	=====	=====	=====	=====
		ALCOHOL	0	0	0.0	NO. PERFORMED: 377	NO. PERFORMED: 87
VIOLATION NOTICES:	20	VISUAL	87	0	0.0	NO. VIOLATIONS: 2	NO. VIOLATIONS: 17
STOP SALES:	0	WATER	81	1	1.2		

COUNTY: 55 - MCNAIRY

			NO.	NO.	%		
TOTAL ESTABLISHMENTS:	27	TYPE TEST	PERFORMED	FAIL	FAIL	LABEL VERIFICATIONS	FILL ID VERIFICATIONS
INSPECTED:	27	=====	=====	=====	=====	=====	=====
		ALCOHOL	0	0	0.0	NO. PERFORMED: 363	NO. PERFORMED: 86
VIOLATION NOTICES:	19	VISUAL	86	0	0.0	NO. VIOLATIONS: 3	NO. VIOLATIONS: 16
STOP SALES:	0	WATER	82	0	0.0		

COUNTY: 57 - MADISON

			NO.	NO.	%		
TOTAL ESTABLISHMENTS:	88	TYPE TEST	PERFORMED	FAIL	FAIL	LABEL VERIFICATIONS	FILL ID VERIFICATIONS
INSPECTED:	87	=====	=====	=====	=====	=====	=====
		ALCOHOL	0	0	0.0	NO. PERFORMED: 1948	NO. PERFORMED: 312
VIOLATION NOTICES:	12	VISUAL	312	1	0.3	NO. VIOLATIONS: 6	NO. VIOLATIONS: 6
STOP SALES:	1	WATER	288	0	0.0		

COUNTY: 66 - OBION

			NO.	NO.	%		
TOTAL ESTABLISHMENTS:	29	TYPE TEST	PERFORMED	FAIL	FAIL	LABEL VERIFICATIONS	FILL ID VERIFICATIONS
INSPECTED:	29	=====	=====	=====	=====	=====	=====
		ALCOHOL	0	0	0.0	NO. PERFORMED: 484	NO. PERFORMED: 106
VIOLATION NOTICES:	16	VISUAL	106	0	0.0	NO. VIOLATIONS: 1	NO. VIOLATIONS: 15
STOP SALES:	0	WATER	99	0	0.0		

COUNTY: 79 - SHELBY

			NO.	NO.	%		
TOTAL ESTABLISHMENTS:	400	TYPE TEST	PERFORMED	FAIL	FAIL	LABEL VERIFICATIONS	FILL ID VERIFICATIONS
INSPECTED:	390	=====	=====	=====	=====	=====	=====
		ALCOHOL	0	0	0.0	NO. PERFORMED: 10171	NO. PERFORMED: 1195
VIOLATION NOTICES:	232	VISUAL	1195	0	0.0	NO. VIOLATIONS: 16	NO. VIOLATIONS: 209
STOP SALES:	0	WATER	1183	7	0.6		

COUNTY: 84 - TIPTON

			NO.	NO.	%		
TOTAL ESTABLISHMENTS:	37	TYPE TEST	PERFORMED	FAIL	FAIL	LABEL VERIFICATIONS	FILL ID VERIFICATIONS
INSPECTED:	37	=====	=====	=====	=====	=====	=====
		ALCOHOL	0	0	0.0	NO. PERFORMED: 728	NO. PERFORMED: 133
VIOLATION NOTICES:	14	VISUAL	133	0	0.0	NO. VIOLATIONS: 0	NO. VIOLATIONS: 13
STOP SALES:	0	WATER	115	1	0.9		

COUNTY: 92 - WEAKLEY

			NO.	NO.	%		
TOTAL ESTABLISHMENTS:	29	TYPE TEST	PERFORMED	FAIL	FAIL	LABEL VERIFICATIONS	FILL ID VERIFICATIONS
INSPECTED:	29	=====	=====	=====	=====	=====	=====
		ALCOHOL	0	0	0.0	NO. PERFORMED: 387	NO. PERFORMED: 86
VIOLATION NOTICES:	18	VISUAL	86	0	0.0	NO. VIOLATIONS: 16	NO. VIOLATIONS: 2
STOP SALES:	1	WATER	82	1	1.2		

CLIENT 25 - TENNESSEE DEPT OF AGRICULTURE
 REGION 1 - WEST TENNESSEE
 FROM 07/01/04 - THRU 06/30/05

			NO.	NO.	%		
TOTAL ESTABLISHMENTS:	1062	TYPE TEST	PERFORMED	FAIL	FAIL	LABEL VERIFICATIONS	FILL ID VERIFICATIONS
INSPECTED:	1047	=====	=====	=====	=====	=====	=====
		ALCOHOL	0	0	0.0	NO. PERFORMED: 19835	NO. PERFORMED: 3323
VIOLATION NOTICES:	456	VISUAL	3323	1	0.0	NO. VIOLATIONS: 58	NO. VIOLATIONS: 389
STOP SALES:	2	WATER	3175	10	0.3		

KEROSENE & MOTOR FUEL INSPECTION SUMMARY
 CLIENT 25 - TENNESSEE DEPT OF AGRICULTURE
 REGION 2 - MIDDLE TENNESSEE
 FROM 07/01/04 - THRU 06/30/05

COUNTY: 2 - BEDFORD

			NO.	NO.	%		
TOTAL ESTABLISHMENTS:	45	TYPE TEST	PERFORMED	FAIL	FAIL	LABEL VERIFICATIONS	FILL ID VERIFICATIONS
INSPECTED:	45	=====	=====	=====	=====	=====	=====
		ALCOHOL	0	0	0.0	NO. PERFORMED: 700	NO. PERFORMED: 181
VIOLATION NOTICES:	9	VISUAL	181	0	0.0	NO. VIOLATIONS: 1	NO. VIOLATIONS: 8
STOP SALES:	1	WATER	171	1	0.6		

COUNTY: 8 - CANNON

			NO.	NO.	%		
TOTAL ESTABLISHMENTS:	14	TYPE TEST	PERFORMED	FAIL	FAIL	LABEL VERIFICATIONS	FILL ID VERIFICATIONS
INSPECTED:	14	=====	=====	=====	=====	=====	=====
		ALCOHOL	0	0	0.0	NO. PERFORMED: 171	NO. PERFORMED: 49
VIOLATION NOTICES:	2	VISUAL	49	0	0.0	NO. VIOLATIONS: 1	NO. VIOLATIONS: 1
STOP SALES:	0	WATER	48	0	0.0		

COUNTY: 11 - CHEATHAM

			NO.	NO.	%		
TOTAL ESTABLISHMENTS:	33	TYPE TEST	PERFORMED	FAIL	FAIL	LABEL VERIFICATIONS	FILL ID VERIFICATIONS
INSPECTED:	32	=====	=====	=====	=====	=====	=====
		ALCOHOL	0	0	0.0	NO. PERFORMED: 447	NO. PERFORMED: 137
VIOLATION NOTICES:	0	VISUAL	137	0	0.0	NO. VIOLATIONS: 0	NO. VIOLATIONS: 0
STOP SALES:	1	WATER	134	1	0.7		

COUNTY: 16 - COFFEE

			NO.	NO.	%		
TOTAL ESTABLISHMENTS:	58	TYPE TEST	PERFORMED	FAIL	FAIL	LABEL VERIFICATIONS	FILL ID VERIFICATIONS
INSPECTED:	56	=====	=====	=====	=====	=====	=====
		ALCOHOL	0	0	0.0	NO. PERFORMED: 1137	NO. PERFORMED: 229
VIOLATION NOTICES:	20	VISUAL	229	0	0.0	NO. VIOLATIONS: 18	NO. VIOLATIONS: 2
STOP SALES:	5	WATER	222	5	2.3		

COUNTY: 19 - DAVIDSON

			NO.	NO.	%		
TOTAL ESTABLISHMENTS:	332	TYPE TEST	PERFORMED	FAIL	FAIL	LABEL VERIFICATIONS	FILL ID VERIFICATIONS
INSPECTED:	326	=====	=====	=====	=====	=====	=====
		ALCOHOL	0	0	0.0	NO. PERFORMED: 8145	NO. PERFORMED: 1301
VIOLATION NOTICES:	144	VISUAL	1301	0	0.0	NO. VIOLATIONS: 44	NO. VIOLATIONS: 93
STOP SALES:	14	WATER	1227	21	1.7		

COUNTY: 21 - DEKALB

			NO.	NO.	%		
TOTAL ESTABLISHMENTS:	29	TYPE TEST	PERFORMED	FAIL	FAIL	LABEL VERIFICATIONS	FILL ID VERIFICATIONS
INSPECTED:	29	=====	=====	=====	=====	=====	=====
		ALCOHOL	0	0	0.0	NO. PERFORMED: 320	NO. PERFORMED: 95
VIOLATION NOTICES:	5	VISUAL	95	0	0.0	NO. VIOLATIONS: 3	NO. VIOLATIONS: 2
STOP SALES:	4	WATER	92	4	4.3		

COUNTY: 22 - DICKSON

			NO.	NO.	%		
TOTAL ESTABLISHMENTS:	49	TYPE TEST	PERFORMED	FAIL	FAIL	LABEL VERIFICATIONS	FILL ID VERIFICATIONS
INSPECTED:	49	=====	=====	=====	=====	=====	=====
		ALCOHOL	0	0	0.0	NO. PERFORMED: 902	NO. PERFORMED: 205
VIOLATION NOTICES:	0	VISUAL	205	2	1.0	NO. VIOLATIONS: 0	NO. VIOLATIONS: 0
STOP SALES:	4	WATER	204	2	1.0		

COUNTY: 26 - FRANKLIN

			NO.	NO.	%		
TOTAL ESTABLISHMENTS:	49	TYPE TEST	PERFORMED	FAIL	FAIL	LABEL VERIFICATIONS	FILL ID VERIFICATIONS
INSPECTED:	47	=====	=====	=====	=====	=====	=====
		ALCOHOL	0	0	0.0	NO. PERFORMED: 558	NO. PERFORMED: 154
VIOLATION NOTICES:	0	VISUAL	154	0	0.0	NO. VIOLATIONS: 0	NO. VIOLATIONS: 0
STOP SALES:	1	WATER	152	1	0.7		

COUNTY: 28 - GILES

			NO.	NO.	%		
TOTAL ESTABLISHMENTS:	40	TYPE TEST	PERFORMED	FAIL	FAIL	LABEL VERIFICATIONS	FILL ID VERIFICATIONS
INSPECTED:	40	=====	=====	=====	=====	=====	=====
		ALCOHOL	0	0	0.0	NO. PERFORMED: 628	NO. PERFORMED: 166
VIOLATION NOTICES:	2	VISUAL	166	0	0.0	NO. VIOLATIONS: 2	NO. VIOLATIONS: 0
STOP SALES:	5	WATER	137	5	3.6		

COUNTY: 31 - GRUNDY

			NO.	NO.	%		
TOTAL ESTABLISHMENTS:	21	TYPE TEST	PERFORMED	FAIL	FAIL	LABEL VERIFICATIONS	FILL ID VERIFICATIONS
INSPECTED:	21	=====	=====	=====	=====	=====	=====
		ALCOHOL	0	0	0.0	NO. PERFORMED: 247	NO. PERFORMED: 79
VIOLATION NOTICES:	0	VISUAL	79	0	0.0	NO. VIOLATIONS: 0	NO. VIOLATIONS: 0
STOP SALES:	2	WATER	77	2	2.6		

COUNTY: 41 - HICKMAN

			NO.	NO.	%		
TOTAL ESTABLISHMENTS:	26	TYPE TEST	PERFORMED	FAIL	FAIL	LABEL VERIFICATIONS	FILL ID VERIFICATIONS
INSPECTED:	24	=====	=====	=====	=====	=====	=====
		ALCOHOL	0	0	0.0	NO. PERFORMED: 270	NO. PERFORMED: 87
VIOLATION NOTICES:	5	VISUAL	87	0	0.0	NO. VIOLATIONS: 0	NO. VIOLATIONS: 5
STOP SALES:	2	WATER	80	2	2.5		

COUNTY: 42 - HOUSTON

			NO.	NO.	%		
TOTAL ESTABLISHMENTS:	9	TYPE TEST	PERFORMED	FAIL	FAIL	LABEL VERIFICATIONS	FILL ID VERIFICATIONS
INSPECTED:	9	=====	=====	=====	=====	=====	=====
		ALCOHOL	0	0	0.0	NO. PERFORMED: 97	NO. PERFORMED: 37
VIOLATION NOTICES:	0	VISUAL	37	0	0.0	NO. VIOLATIONS: 0	NO. VIOLATIONS: 0
STOP SALES:	0	WATER	37	0	0.0		

COUNTY: 43 - HUMPHREYS

			NO.	NO.	%		
TOTAL ESTABLISHMENTS:	24	TYPE TEST	PERFORMED	FAIL	FAIL	LABEL VERIFICATIONS	FILL ID VERIFICATIONS
INSPECTED:	24	=====	=====	=====	=====	=====	=====
		ALCOHOL	0	0	0.0	NO. PERFORMED: 405	NO. PERFORMED: 81
VIOLATION NOTICES:	0	VISUAL	81	0	0.0	NO. VIOLATIONS: 0	NO. VIOLATIONS: 0
STOP SALES:	1	WATER	78	1	1.3		

COUNTY: 50 - LAWRENCE

			NO.	NO.	%		
TOTAL ESTABLISHMENTS:	55	TYPE TEST	PERFORMED	FAIL	FAIL	LABEL VERIFICATIONS	FILL ID VERIFICATIONS
INSPECTED:	55	=====	=====	=====	=====	=====	=====
		ALCOHOL	0	0	0.0	NO. PERFORMED: 800	NO. PERFORMED: 260
VIOLATION NOTICES:	0	VISUAL	260	0	0.0	NO. VIOLATIONS: 0	NO. VIOLATIONS: 0
STOP SALES:	1	WATER	228	1	0.4		

COUNTY: 51 - LEWIS

			NO.	NO.	%		
TOTAL ESTABLISHMENTS:	10	TYPE TEST	PERFORMED	FAIL	FAIL	LABEL VERIFICATIONS	FILL ID VERIFICATIONS
INSPECTED:	10	=====	=====	=====	=====	=====	=====
		ALCOHOL	0	0	0.0	NO. PERFORMED: 127	NO. PERFORMED: 42
VIOLATION NOTICES:	0	VISUAL	42	0	0.0	NO. VIOLATIONS: 0	NO. VIOLATIONS: 0
STOP SALES:	0	WATER	33	0	0.0		

COUNTY: 52 - LINCOLN

			NO.	NO.	%		
TOTAL ESTABLISHMENTS:	43	TYPE TEST	PERFORMED	FAIL	FAIL	LABEL VERIFICATIONS	FILL ID VERIFICATIONS
INSPECTED:	41	=====	=====	=====	=====	=====	=====
		ALCOHOL	0	0	0.0	NO. PERFORMED: 561	NO. PERFORMED: 147
VIOLATION NOTICES:	1	VISUAL	147	0	0.0	NO. VIOLATIONS: 0	NO. VIOLATIONS: 1
STOP SALES:	0	WATER	144	0	0.0		

COUNTY: 56 - MACON

			NO.	NO.	%		
TOTAL ESTABLISHMENTS:	21	TYPE TEST	PERFORMED	FAIL	FAIL	LABEL VERIFICATIONS	FILL ID VERIFICATIONS
INSPECTED:	21	=====	=====	=====	=====	=====	=====
		ALCOHOL	0	0	0.0	NO. PERFORMED: 231	NO. PERFORMED: 88
VIOLATION NOTICES:	7	VISUAL	88	0	0.0	NO. VIOLATIONS: 4	NO. VIOLATIONS: 3
STOP SALES:	1	WATER	81	1	1.2		

COUNTY: 58 - MARION

			NO.	NO.	%		
TOTAL ESTABLISHMENTS:	39	TYPE TEST	PERFORMED	FAIL	FAIL	LABEL VERIFICATIONS	FILL ID VERIFICATIONS
INSPECTED:	37	=====	=====	=====	=====	=====	=====
		ALCOHOL	0	0	0.0	NO. PERFORMED: 654	NO. PERFORMED: 142
VIOLATION NOTICES:	3	VISUAL	142	0	0.0	NO. VIOLATIONS: 0	NO. VIOLATIONS: 3
STOP SALES:	3	WATER	132	3	2.3		

COUNTY: 59 - MARSHALL

			NO.	NO.	%		
TOTAL ESTABLISHMENTS:	35	TYPE TEST	PERFORMED	FAIL	FAIL	LABEL VERIFICATIONS	FILL ID VERIFICATIONS
INSPECTED:	35	=====	=====	=====	=====	=====	=====
		ALCOHOL	0	0	0.0	NO. PERFORMED: 559	NO. PERFORMED: 133
VIOLATION NOTICES:	3	VISUAL	133	0	0.0	NO. VIOLATIONS: 0	NO. VIOLATIONS: 3
STOP SALES:	0	WATER	121	0	0.0		

COUNTY: 60 - MAURY

			NO.	NO.	%		
TOTAL ESTABLISHMENTS:	69	TYPE TEST	PERFORMED	FAIL	FAIL	LABEL VERIFICATIONS	FILL ID VERIFICATIONS
INSPECTED:	69	=====	=====	=====	=====	=====	=====
		ALCOHOL	0	0	0.0	NO. PERFORMED: 1293	NO. PERFORMED: 281
VIOLATION NOTICES:	10	VISUAL	281	0	0.0	NO. VIOLATIONS: 1	NO. VIOLATIONS: 9
STOP SALES:	4	WATER	248	4	1.6		

COUNTY: 63 - MONTGOMERY

			NO.	NO.	%		
TOTAL ESTABLISHMENTS:	93	TYPE TEST	PERFORMED	FAIL	FAIL	LABEL VERIFICATIONS	FILL ID VERIFICATIONS
INSPECTED:	93	=====	=====	=====	=====	=====	=====
		ALCOHOL	0	0	0.0	NO. PERFORMED: 2012	NO. PERFORMED: 344
VIOLATION NOTICES:	18	VISUAL	344	1	0.3	NO. VIOLATIONS: 6	NO. VIOLATIONS: 12
STOP SALES:	8	WATER	343	7	2.0		

COUNTY: 64 - MOORE

			NO.	NO.	%		
TOTAL ESTABLISHMENTS:	5	TYPE TEST	PERFORMED	FAIL	FAIL	LABEL VERIFICATIONS	FILL ID VERIFICATIONS
INSPECTED:	5	=====	=====	=====	=====	=====	=====
		ALCOHOL	0	0	0.0	NO. PERFORMED: 59	NO. PERFORMED: 22
VIOLATION NOTICES:	1	VISUAL	22	0	0.0	NO. VIOLATIONS: 1	NO. VIOLATIONS: 0
STOP SALES:	0	WATER	22	0	0.0		

COUNTY: 68 - PERRY

			NO.	NO.	%		
TOTAL ESTABLISHMENTS:	14	TYPE TEST	PERFORMED	FAIL	FAIL	LABEL VERIFICATIONS	FILL ID VERIFICATIONS
INSPECTED:	14	=====	=====	=====	=====	=====	=====
		ALCOHOL	0	0	0.0	NO. PERFORMED: 154	NO. PERFORMED: 49
VIOLATION NOTICES:	7	VISUAL	49	0	0.0	NO. VIOLATIONS: 0	NO. VIOLATIONS: 7
STOP SALES:	0	WATER	40	0	0.0		

COUNTY: 74 - ROBERTSON

			NO.	NO.	%		
TOTAL ESTABLISHMENTS:	59	TYPE TEST	PERFORMED	FAIL	FAIL	LABEL VERIFICATIONS	FILL ID VERIFICATIONS
INSPECTED:	59	=====	=====	=====	=====	=====	=====
		ALCOHOL	0	0	0.0	NO. PERFORMED: 989	NO. PERFORMED: 228
VIOLATION NOTICES:	2	VISUAL	228	2	0.9	NO. VIOLATIONS: 0	NO. VIOLATIONS: 0
STOP SALES:	2	WATER	227	2	0.9		

COUNTY: 75 - RUTHERFORD

			NO.	NO.	%		
TOTAL ESTABLISHMENTS:	123	TYPE TEST	PERFORMED	FAIL	FAIL	LABEL VERIFICATIONS	FILL ID VERIFICATIONS
INSPECTED:	122	=====	=====	=====	=====	=====	=====
		ALCOHOL	0	0	0.0	NO. PERFORMED: 2765	NO. PERFORMED: 463
VIOLATION NOTICES:	10	VISUAL	463	0	0.0	NO. VIOLATIONS: 1	NO. VIOLATIONS: 9
STOP SALES:	3	WATER	449	3	0.7		

COUNTY: 80 - SMITH

			NO.	NO.	%		
TOTAL ESTABLISHMENTS:	23	TYPE TEST	PERFORMED	FAIL	FAIL	LABEL VERIFICATIONS	FILL ID VERIFICATIONS
INSPECTED:	23	=====	=====	=====	=====	=====	=====
		ALCOHOL	0	0	0.0	NO. PERFORMED: 266	NO. PERFORMED: 85
VIOLATION NOTICES:	3	VISUAL	85	0	0.0	NO. VIOLATIONS: 1	NO. VIOLATIONS: 2
STOP SALES:	0	WATER	79	0	0.0		

COUNTY: 81 - STEWART

			NO.	NO.	%		
TOTAL ESTABLISHMENTS:	22	TYPE TEST	PERFORMED	FAIL	FAIL	LABEL VERIFICATIONS	FILL ID VERIFICATIONS
INSPECTED:	22	=====	=====	=====	=====	=====	=====
		ALCOHOL	0	0	0.0	NO. PERFORMED: 232	NO. PERFORMED: 78
VIOLATION NOTICES:	0	VISUAL	78	0	0.0	NO. VIOLATIONS: 0	NO. VIOLATIONS: 0
STOP SALES:	1	WATER	78	1	1.3		

COUNTY: 83 - SUMNER

			NO.	NO.	%		
TOTAL ESTABLISHMENTS:	97	TYPE TEST	PERFORMED	FAIL	FAIL	LABEL VERIFICATIONS	FILL ID VERIFICATIONS
INSPECTED:	96	=====	=====	=====	=====	=====	=====
		ALCOHOL	0	0	0.0	NO. PERFORMED: 1746	NO. PERFORMED: 368
VIOLATION NOTICES:	11	VISUAL	368	0	0.0	NO. VIOLATIONS: 9	NO. VIOLATIONS: 2
STOP SALES:	7	WATER	360	7	1.9		

COUNTY: 85 - TROUSDALE

			NO.	NO.	%		
TOTAL ESTABLISHMENTS:	6	TYPE TEST	PERFORMED	FAIL	FAIL	LABEL VERIFICATIONS	FILL ID VERIFICATIONS
INSPECTED:	6	=====	=====	=====	=====	=====	=====
		ALCOHOL	0	0	0.0	NO. PERFORMED: 102	NO. PERFORMED: 21
VIOLATION NOTICES:	5	VISUAL	21	0	0.0	NO. VIOLATIONS: 2	NO. VIOLATIONS: 3
STOP SALES:	0	WATER	21	0	0.0		

COUNTY: 89 - WARREN

			NO.	NO.	%		
TOTAL ESTABLISHMENTS:	49	TYPE TEST	PERFORMED	FAIL	FAIL	LABEL VERIFICATIONS	FILL ID VERIFICATIONS
INSPECTED:	49	=====	=====	=====	=====	=====	=====
		ALCOHOL	0	0	0.0	NO. PERFORMED: 684	NO. PERFORMED: 188
VIOLATION NOTICES:	9	VISUAL	188	0	0.0	NO. VIOLATIONS: 6	NO. VIOLATIONS: 3
STOP SALES:	4	WATER	182	4	2.2		

COUNTY: 91 - WAYNE

			NO.	NO.	%		
TOTAL ESTABLISHMENTS:	28	TYPE TEST	PERFORMED	FAIL	FAIL	LABEL VERIFICATIONS	FILL ID VERIFICATIONS
INSPECTED:	28	=====	=====	=====	=====	=====	=====
		ALCOHOL	0	0	0.0	NO. PERFORMED: 257	NO. PERFORMED: 107
VIOLATION NOTICES:	0	VISUAL	107	0	0.0	NO. VIOLATIONS: 0	NO. VIOLATIONS: 0
STOP SALES:	0	WATER	90	0	0.0		

COUNTY: 94 - WILLIAMSON

			NO.	NO.	%		
TOTAL ESTABLISHMENTS:	78	TYPE TEST	PERFORMED	FAIL	FAIL	LABEL VERIFICATIONS	FILL ID VERIFICATIONS
INSPECTED:	77	=====	=====	=====	=====	=====	=====
		ALCOHOL	0	0	0.0	NO. PERFORMED: 1930	NO. PERFORMED: 317
VIOLATION NOTICES:	0	VISUAL	317	0	0.0	NO. VIOLATIONS: 0	NO. VIOLATIONS: 0
STOP SALES:	3	WATER	314	3	1.0		

COUNTY: 95 - WILSON

			NO.	NO.	%		
TOTAL ESTABLISHMENTS:	69	TYPE TEST	PERFORMED	FAIL	FAIL	LABEL VERIFICATIONS	FILL ID VERIFICATIONS
INSPECTED:	68	=====	=====	=====	=====	=====	=====
		ALCOHOL	0	0	0.0	NO. PERFORMED: 1491	NO. PERFORMED: 256
VIOLATION NOTICES:	4	VISUAL	256	0	0.0	NO. VIOLATIONS: 3	NO. VIOLATIONS: 1
STOP SALES:	7	WATER	239	7	2.9		

CLIENT 25 - TENNESSEE DEPT OF AGRICULTURE
REGION 2 - MIDDLE TENNESSEE
FROM 07/01/04 - THRU 06/30/05

			NO.	NO.	%		
TOTAL ESTABLISHMENTS:	1667	TYPE TEST	PERFORMED	FAIL	FAIL	LABEL VERIFICATIONS	FILL ID VERIFICATIONS
INSPECTED:	1646	=====	=====	=====	=====	=====	=====
		ALCOHOL	0	0	0.0	NO. PERFORMED: 30939	NO. PERFORMED: 6420
VIOLATION NOTICES:	281	VISUAL	6420	5	0.1	NO. VIOLATIONS: 103	NO. VIOLATIONS: 169
STOP SALES:	84	WATER	6090	88	1.4		

KEROSENE & MOTOR FUEL INSPECTION SUMMARY
 CLIENT 25 - TENNESSEE DEPT OF AGRICULTURE
 REGION 3 - EAST TENNESSEE
 FROM 07/01/04 - THRU 06/30/05

COUNTY: 1 - ANDERSON

			NO.	NO.	%		
TOTAL ESTABLISHMENTS:	58	TYPE TEST	PERFORMED	FAIL	FAIL	LABEL VERIFICATIONS	FILL ID VERIFICATIONS
INSPECTED:	58	=====	=====	=====	=====	=====	=====
		ALCOHOL	0	0	0.0	NO. PERFORMED: 1120	NO. PERFORMED: 199
VIOLATION NOTICES:	6	VISUAL	199	0	0.0	NO. VIOLATIONS: 6	NO. VIOLATIONS: 0
STOP SALES:	0	WATER	199	0	0.0		

COUNTY: 4 - BLEDSOE

			NO.	NO.	%		
TOTAL ESTABLISHMENTS:	16	TYPE TEST	PERFORMED	FAIL	FAIL	LABEL VERIFICATIONS	FILL ID VERIFICATIONS
INSPECTED:	14	=====	=====	=====	=====	=====	=====
		ALCOHOL	0	0	0.0	NO. PERFORMED: 90	NO. PERFORMED: 53
VIOLATION NOTICES:	2	VISUAL	53	0	0.0	NO. VIOLATIONS: 2	NO. VIOLATIONS: 0
STOP SALES:	0	WATER	53	0	0.0		

COUNTY: 5 - BLOUNT

			NO.	NO.	%		
TOTAL ESTABLISHMENTS:	80	TYPE TEST	PERFORMED	FAIL	FAIL	LABEL VERIFICATIONS	FILL ID VERIFICATIONS
INSPECTED:	75	=====	=====	=====	=====	=====	=====
		ALCOHOL	0	0	0.0	NO. PERFORMED: 1549	NO. PERFORMED: 285
VIOLATION NOTICES:	12	VISUAL	285	0	0.0	NO. VIOLATIONS: 0	NO. VIOLATIONS: 12
STOP SALES:	0	WATER	285	0	0.0		

COUNTY: 6 - BRADLEY

			NO.	NO.	%		
TOTAL ESTABLISHMENTS:	69	TYPE TEST	PERFORMED	FAIL	FAIL	LABEL VERIFICATIONS	FILL ID VERIFICATIONS
INSPECTED:	69	=====	=====	=====	=====	=====	=====
		ALCOHOL	0	0	0.0	NO. PERFORMED: 1435	NO. PERFORMED: 246
VIOLATION NOTICES:	6	VISUAL	246	0	0.0	NO. VIOLATIONS: 6	NO. VIOLATIONS: 0
STOP SALES:	0	WATER	246	0	0.0		

COUNTY: 7 - CAMPBELL

			NO.	NO.	%		
TOTAL ESTABLISHMENTS:	40	TYPE TEST	PERFORMED	FAIL	FAIL	LABEL VERIFICATIONS	FILL ID VERIFICATIONS
INSPECTED:	40	=====	=====	=====	=====	=====	=====
		ALCOHOL	0	0	0.0	NO. PERFORMED: 701	NO. PERFORMED: 124
VIOLATION NOTICES:	0	VISUAL	124	0	0.0	NO. VIOLATIONS: 0	NO. VIOLATIONS: 0
STOP SALES:	0	WATER	122	0	0.0		

			NO.	NO.	%		
TOTAL ESTABLISHMENTS:	46	TYPE TEST	PERFORMED	FAIL	FAIL	LABEL VERIFICATIONS	FILL ID VERIFICATIONS
INSPECTED:	46	=====	=====	=====	=====	=====	=====
		ALCOHOL	0	0	0.0	NO. PERFORMED: 713	NO. PERFORMED: 175
VIOLATION NOTICES:	1	VISUAL	175	0	0.0	NO. VIOLATIONS: 0	NO. VIOLATIONS: 1
STOP SALES:	0	WATER	78	0	0.0		

COUNTY: 13 - CLAIBORNE

			NO.	NO.	%		
TOTAL ESTABLISHMENTS:	33	TYPE TEST	PERFORMED	FAIL	FAIL	LABEL VERIFICATIONS	FILL ID VERIFICATIONS
INSPECTED:	33	=====	=====	=====	=====	=====	=====
		ALCOHOL	0	0	0.0	NO. PERFORMED: 408	NO. PERFORMED: 110
VIOLATION NOTICES:	8	VISUAL	110	0	0.0	NO. VIOLATIONS: 0	NO. VIOLATIONS: 8
STOP SALES:	0	WATER	110	0	0.0		

COUNTY: 14 - CLAY

			NO.	NO.	%		
TOTAL ESTABLISHMENTS:	20	TYPE TEST	PERFORMED	FAIL	FAIL	LABEL VERIFICATIONS	FILL ID VERIFICATIONS
INSPECTED:	19	=====	=====	=====	=====	=====	=====
		ALCOHOL	0	0	0.0	NO. PERFORMED: 170	NO. PERFORMED: 71
VIOLATION NOTICES:	5	VISUAL	71	0	0.0	NO. VIOLATIONS: 5	NO. VIOLATIONS: 0
STOP SALES:	0	WATER	62	0	0.0		

COUNTY: 15 - COCKE

			NO.	NO.	%		
TOTAL ESTABLISHMENTS:	48	TYPE TEST	PERFORMED	FAIL	FAIL	LABEL VERIFICATIONS	FILL ID VERIFICATIONS
INSPECTED:	47	=====	=====	=====	=====	=====	=====
		ALCOHOL	0	0	0.0	NO. PERFORMED: 759	NO. PERFORMED: 157
VIOLATION NOTICES:	5	VISUAL	157	0	0.0	NO. VIOLATIONS: 0	NO. VIOLATIONS: 5
STOP SALES:	0	WATER	157	0	0.0		

COUNTY: 18 - CUMBERLAND

			NO.	NO.	%		
TOTAL ESTABLISHMENTS:	66	TYPE TEST	PERFORMED	FAIL	FAIL	LABEL VERIFICATIONS	FILL ID VERIFICATIONS
INSPECTED:	64	=====	=====	=====	=====	=====	=====
		ALCOHOL	0	0	0.0	NO. PERFORMED: 1079	NO. PERFORMED: 246
VIOLATION NOTICES:	15	VISUAL	246	1	0.4	NO. VIOLATIONS: 2	NO. VIOLATIONS: 12
STOP SALES:	2	WATER	245	2	0.8		

COUNTY: 25 - FENTRESS

			NO.	NO.	%		
TOTAL ESTABLISHMENTS:	22	TYPE TEST	PERFORMED	FAIL	FAIL	LABEL VERIFICATIONS	FILL ID VERIFICATIONS
INSPECTED:	22	=====	=====	=====	=====	=====	=====
		ALCOHOL	0	0	0.0	NO. PERFORMED: 260	NO. PERFORMED: 86
VIOLATION NOTICES:	5	VISUAL	86	0	0.0	NO. VIOLATIONS: 0	NO. VIOLATIONS: 5
STOP SALES:	3	WATER	83	3	3.6		

COUNTY: 29 - GRAINGER

			NO.	NO.	%		
TOTAL ESTABLISHMENTS:	25	TYPE TEST	PERFORMED	FAIL	FAIL	LABEL VERIFICATIONS	FILL ID VERIFICATIONS
INSPECTED:	25	=====	=====	=====	=====	=====	=====
		ALCOHOL	0	0	0.0	NO. PERFORMED: 212	NO. PERFORMED: 67
VIOLATION NOTICES:	5	VISUAL	67	0	0.0	NO. VIOLATIONS: 0	NO. VIOLATIONS: 5
STOP SALES:	0	WATER	67	0	0.0		

COUNTY: 30 - GREENE

			NO.	NO.	%		
TOTAL ESTABLISHMENTS:	69	TYPE TEST	PERFORMED	FAIL	FAIL	LABEL VERIFICATIONS	FILL ID VERIFICATIONS
INSPECTED:	68	=====	=====	=====	=====	=====	=====
		ALCOHOL	0	0	0.0	NO. PERFORMED: 1111	NO. PERFORMED: 253
VIOLATION NOTICES:	5	VISUAL	253	0	0.0	NO. VIOLATIONS: 0	NO. VIOLATIONS: 5
STOP SALES:	0	WATER	253	0	0.0		

			NO.	NO.	%		
TOTAL ESTABLISHMENTS:	54	TYPE TEST	PERFORMED	FAIL	FAIL	LABEL VERIFICATIONS	FILL ID VERIFICATIONS
INSPECTED:	53	=====	=====	=====	=====	=====	=====
		ALCOHOL	0	0	0.0	NO. PERFORMED: 871	NO. PERFORMED: 177
VIOLATION NOTICES:	0	VISUAL	177	0	0.0	NO. VIOLATIONS: 0	NO. VIOLATIONS: 0
STOP SALES:	0	WATER	166	0	0.0		

COUNTY: 33 - HAMILTON

			NO.	NO.	%		
TOTAL ESTABLISHMENTS:	201	TYPE TEST	PERFORMED	FAIL	FAIL	LABEL VERIFICATIONS	FILL ID VERIFICATIONS
INSPECTED:	198	=====	=====	=====	=====	=====	=====
		ALCOHOL	0	0	0.0	NO. PERFORMED: 4112	NO. PERFORMED: 711
VIOLATION NOTICES:	0	VISUAL	711	0	0.0	NO. VIOLATIONS: 0	NO. VIOLATIONS: 0
STOP SALES:	0	WATER	708	0	0.0		

COUNTY: 34 - HANCOCK

			NO.	NO.	%		
TOTAL ESTABLISHMENTS:	10	TYPE TEST	PERFORMED	FAIL	FAIL	LABEL VERIFICATIONS	FILL ID VERIFICATIONS
INSPECTED:	10	=====	=====	=====	=====	=====	=====
		ALCOHOL	0	0	0.0	NO. PERFORMED: 75	NO. PERFORMED: 41
VIOLATION NOTICES:	0	VISUAL	41	0	0.0	NO. VIOLATIONS: 0	NO. VIOLATIONS: 0
STOP SALES:	0	WATER	37	0	0.0		

COUNTY: 37 - HAWKINS

			NO.	NO.	%		
TOTAL ESTABLISHMENTS:	40	TYPE TEST	PERFORMED	FAIL	FAIL	LABEL VERIFICATIONS	FILL ID VERIFICATIONS
INSPECTED:	40	=====	=====	=====	=====	=====	=====
		ALCOHOL	0	0	0.0	NO. PERFORMED: 622	NO. PERFORMED: 145
VIOLATION NOTICES:	0	VISUAL	145	0	0.0	NO. VIOLATIONS: 0	NO. VIOLATIONS: 0
STOP SALES:	0	WATER	107	0	0.0		

COUNTY: 44 - JACKSON

			NO.	NO.	%		
TOTAL ESTABLISHMENTS:	14	TYPE TEST	PERFORMED	FAIL	FAIL	LABEL VERIFICATIONS	FILL ID VERIFICATIONS
INSPECTED:	14	=====	=====	=====	=====	=====	=====
		ALCOHOL	0	0	0.0	NO. PERFORMED: 104	NO. PERFORMED: 49
VIOLATION NOTICES:	0	VISUAL	49	0	0.0	NO. VIOLATIONS: 0	NO. VIOLATIONS: 0
STOP SALES:	0	WATER	48	0	0.0		

COUNTY: 45 - JEFFERSON

			NO.	NO.	%		
TOTAL ESTABLISHMENTS:	40	TYPE TEST	PERFORMED	FAIL	FAIL	LABEL VERIFICATIONS	FILL ID VERIFICATIONS
INSPECTED:	38	=====	=====	=====	=====	=====	=====
		ALCOHOL	0	0	0.0	NO. PERFORMED: 814	NO. PERFORMED: 140
VIOLATION NOTICES:	2	VISUAL	140	0	0.0	NO. VIOLATIONS: 0	NO. VIOLATIONS: 2
STOP SALES:	0	WATER	139	0	0.0		

COUNTY: 46 - JOHNSON

			NO.	NO.	%		
TOTAL ESTABLISHMENTS:	16	TYPE TEST	PERFORMED	FAIL	FAIL	LABEL VERIFICATIONS	FILL ID VERIFICATIONS
INSPECTED:	16	=====	=====	=====	=====	=====	=====
		ALCOHOL	0	0	0.0	NO. PERFORMED: 236	NO. PERFORMED: 66
VIOLATION NOTICES:	0	VISUAL	66	0	0.0	NO. VIOLATIONS: 0	NO. VIOLATIONS: 0
STOP SALES:	0	WATER	26	0	0.0		

COUNTY: 47 - KNOX

			NO.	NO.	%		
TOTAL ESTABLISHMENTS:	271	TYPE TEST	PERFORMED	FAIL	FAIL	LABEL VERIFICATIONS	FILL ID VERIFICATIONS
INSPECTED:	265	=====	=====	=====	=====	=====	=====
		ALCOHOL	0	0	0.0	NO. PERFORMED: 5898	NO. PERFORMED: 957
VIOLATION NOTICES:	79	VISUAL	957	0	0.0	NO. VIOLATIONS: 48	NO. VIOLATIONS: 30
STOP SALES:	22	WATER	956	23	2.4		

COUNTY: 53 - LOUDON

			NO.	NO.	%		
TOTAL ESTABLISHMENTS:	44	TYPE TEST	PERFORMED	FAIL	FAIL	LABEL VERIFICATIONS	FILL ID VERIFICATIONS
INSPECTED:	43	=====	=====	=====	=====	=====	=====
		ALCOHOL	0	0	0.0	NO. PERFORMED: 733	NO. PERFORMED: 137
VIOLATION NOTICES:	0	VISUAL	137	0	0.0	NO. VIOLATIONS: 0	NO. VIOLATIONS: 0
STOP SALES:	0	WATER	137	0	0.0		

COUNTY: 54 - MCMINN

			NO.	NO.	%		
TOTAL ESTABLISHMENTS:	50	TYPE TEST	PERFORMED	FAIL	FAIL	LABEL VERIFICATIONS	FILL ID VERIFICATIONS
INSPECTED:	49	=====	=====	=====	=====	=====	=====
		ALCOHOL	0	0	0.0	NO. PERFORMED: 908	NO. PERFORMED: 166
VIOLATION NOTICES:	0	VISUAL	166	0	0.0	NO. VIOLATIONS: 0	NO. VIOLATIONS: 0
STOP SALES:	0	WATER	166	0	0.0		

COUNTY: 61 - MEIGS

			NO.	NO.	%		
TOTAL ESTABLISHMENTS:	15	TYPE TEST	PERFORMED	FAIL	FAIL	LABEL VERIFICATIONS	FILL ID VERIFICATIONS
INSPECTED:	14	=====	=====	=====	=====	=====	=====
		ALCOHOL	0	0	0.0	NO. PERFORMED: 137	NO. PERFORMED: 47
VIOLATION NOTICES:	24	VISUAL	47	0	0.0	NO. VIOLATIONS: 24	NO. VIOLATIONS: 0
STOP SALES:	0	WATER	47	0	0.0		

COUNTY: 62 - MONROE

			NO.	NO.	%		
TOTAL ESTABLISHMENTS:	49	TYPE TEST	PERFORMED	FAIL	FAIL	LABEL VERIFICATIONS	FILL ID VERIFICATIONS
INSPECTED:	49	=====	=====	=====	=====	=====	=====
		ALCOHOL	0	0	0.0	NO. PERFORMED: 859	NO. PERFORMED: 155
VIOLATION NOTICES:	0	VISUAL	155	0	0.0	NO. VIOLATIONS: 0	NO. VIOLATIONS: 0
STOP SALES:	0	WATER	155	0	0.0		

COUNTY: 65 - MORGAN

			NO.	NO.	%		
TOTAL ESTABLISHMENTS:	23	TYPE TEST	PERFORMED	FAIL	FAIL	LABEL VERIFICATIONS	FILL ID VERIFICATIONS
INSPECTED:	22	=====	=====	=====	=====	=====	=====
		ALCOHOL	0	0	0.0	NO. PERFORMED: 136	NO. PERFORMED: 69
VIOLATION NOTICES:	7	VISUAL	69	0	0.0	NO. VIOLATIONS: 3	NO. VIOLATIONS: 4
STOP SALES:	0	WATER	65	0	0.0		

COUNTY: 67 - OVERTON

			NO.	NO.	%		
TOTAL ESTABLISHMENTS:	33	TYPE TEST	PERFORMED	FAIL	FAIL	LABEL VERIFICATIONS	FILL ID VERIFICATIONS
INSPECTED:	32	=====	=====	=====	=====	=====	=====
		ALCOHOL	0	0	0.0	NO. PERFORMED: 347	NO. PERFORMED: 108
VIOLATION NOTICES:	2	VISUAL	108	0	0.0	NO. VIOLATIONS: 0	NO. VIOLATIONS: 2
STOP SALES:	0	WATER	108	0	0.0		

COUNTY: 69 - PICKETT

			NO.	NO.	%		
TOTAL ESTABLISHMENTS:	12	TYPE TEST	PERFORMED	FAIL	FAIL	LABEL VERIFICATIONS	FILL ID VERIFICATIONS
INSPECTED:	12	=====	=====	=====	=====	=====	=====
		ALCOHOL	0	0	0.0	NO. PERFORMED: 159	NO. PERFORMED: 36
VIOLATION NOTICES:	0	VISUAL	36	0	0.0	NO. VIOLATIONS: 0	NO. VIOLATIONS: 0
STOP SALES:	1	WATER	36	1	2.8		

COUNTY: 70 - POLK

			NO.	NO.	%		
TOTAL ESTABLISHMENTS:	21	TYPE TEST	PERFORMED	FAIL	FAIL	LABEL VERIFICATIONS	FILL ID VERIFICATIONS
INSPECTED:	20	=====	=====	=====	=====	=====	=====
		ALCOHOL	0	0	0.0	NO. PERFORMED: 305	NO. PERFORMED: 73
VIOLATION NOTICES:	0	VISUAL	73	0	0.0	NO. VIOLATIONS: 0	NO. VIOLATIONS: 0
STOP SALES:	0	WATER	73	0	0.0		

COUNTY: 71 - PUTNAM

			NO.	NO.	%		
TOTAL ESTABLISHMENTS:	70	TYPE TEST	PERFORMED	FAIL	FAIL	LABEL VERIFICATIONS	FILL ID VERIFICATIONS
INSPECTED:	70	=====	=====	=====	=====	=====	=====
		ALCOHOL	0	0	0.0	NO. PERFORMED: 1371	NO. PERFORMED: 264
VIOLATION NOTICES:	11	VISUAL	264	0	0.0	NO. VIOLATIONS: 7	NO. VIOLATIONS: 4
STOP SALES:	3	WATER	263	3	1.1		

COUNTY: 72 - RHEA

			NO.	NO.	%		
TOTAL ESTABLISHMENTS:	38	TYPE TEST	PERFORMED	FAIL	FAIL	LABEL VERIFICATIONS	FILL ID VERIFICATIONS
INSPECTED:	37	=====	=====	=====	=====	=====	=====
		ALCOHOL	0	0	0.0	NO. PERFORMED: 470	NO. PERFORMED: 112
VIOLATION NOTICES:	0	VISUAL	112	0	0.0	NO. VIOLATIONS: 0	NO. VIOLATIONS: 0
STOP SALES:	0	WATER	112	0	0.0		

COUNTY: 73 - ROANE

			NO.	NO.	%		
TOTAL ESTABLISHMENTS:	54	TYPE TEST	PERFORMED	FAIL	FAIL	LABEL VERIFICATIONS	FILL ID VERIFICATIONS
INSPECTED:	52	=====	=====	=====	=====	=====	=====
		ALCOHOL	0	0	0.0	NO. PERFORMED: 828	NO. PERFORMED: 174
VIOLATION NOTICES:	12	VISUAL	174	0	0.0	NO. VIOLATIONS: 9	NO. VIOLATIONS: 3
STOP SALES:	3	WATER	173	3	1.7		

COUNTY: 76 - SCOTT

			NO.	NO.	%		
TOTAL ESTABLISHMENTS:	27	TYPE TEST	PERFORMED	FAIL	FAIL	LABEL VERIFICATIONS	FILL ID VERIFICATIONS
INSPECTED:	27	=====	=====	=====	=====	=====	=====
		ALCOHOL	0	0	0.0	NO. PERFORMED: 302	NO. PERFORMED: 94
VIOLATION NOTICES:	0	VISUAL	94	0	0.0	NO. VIOLATIONS: 0	NO. VIOLATIONS: 0
STOP SALES:	0	WATER	94	0	0.0		

COUNTY: 77 - SEQUATCHIE

			NO.	NO.	%		
TOTAL ESTABLISHMENTS:	13	TYPE TEST	PERFORMED	FAIL	FAIL	LABEL VERIFICATIONS	FILL ID VERIFICATIONS
INSPECTED:	13	=====	=====	=====	=====	=====	=====
		ALCOHOL	0	0	0.0	NO. PERFORMED: 167	NO. PERFORMED: 54
VIOLATION NOTICES:	0	VISUAL	54	0	0.0	NO. VIOLATIONS: 0	NO. VIOLATIONS: 0
STOP SALES:	0	WATER	54	0	0.0		

COUNTY: 78 - SEVIER

			NO.	NO.	%		
TOTAL ESTABLISHMENTS:	86	TYPE TEST	PERFORMED	FAIL	FAIL	LABEL VERIFICATIONS	FILL ID VERIFICATIONS
INSPECTED:	82	=====	=====	=====	=====	=====	=====
		ALCOHOL	0	0	0.0	NO. PERFORMED: 1748	NO. PERFORMED: 294
VIOLATION NOTICES:	3	VISUAL	294	0	0.0	NO. VIOLATIONS: 0	NO. VIOLATIONS: 3
STOP SALES:	0	WATER	294	0	0.0		

COUNTY: 82 - SULLIVAN

			NO.	NO.	%		
TOTAL ESTABLISHMENTS:	98	TYPE TEST	PERFORMED	FAIL	FAIL	LABEL VERIFICATIONS	FILL ID VERIFICATIONS
INSPECTED:	96	=====	=====	=====	=====	=====	=====
		ALCOHOL	0	0	0.0	NO. PERFORMED: 1796	NO. PERFORMED: 377
VIOLATION NOTICES:	2	VISUAL	377	0	0.0	NO. VIOLATIONS: 0	NO. VIOLATIONS: 2
STOP SALES:	0	WATER	133	0	0.0		

COUNTY: 86 - UNICOI

			NO.	NO.	%		
TOTAL ESTABLISHMENTS:	16	TYPE TEST	PERFORMED	FAIL	FAIL	LABEL VERIFICATIONS	FILL ID VERIFICATIONS
INSPECTED:	16	=====	=====	=====	=====	=====	=====
		ALCOHOL	0	0	0.0	NO. PERFORMED: 241	NO. PERFORMED: 72
VIOLATION NOTICES:	9	VISUAL	72	0	0.0	NO. VIOLATIONS: 0	NO. VIOLATIONS: 9
STOP SALES:	0	WATER	31	0	0.0		

COUNTY: 87 - UNION

			NO.	NO.	%		
TOTAL ESTABLISHMENTS:	23	TYPE TEST	PERFORMED	FAIL	FAIL	LABEL VERIFICATIONS	FILL ID VERIFICATIONS
INSPECTED:	23	=====	=====	=====	=====	=====	=====
		ALCOHOL	0	0	0.0	NO. PERFORMED: 245	NO. PERFORMED: 65
VIOLATION NOTICES:	0	VISUAL	65	0	0.0	NO. VIOLATIONS: 0	NO. VIOLATIONS: 0
STOP SALES:	3	WATER	63	3	4.8		

COUNTY: 88 - VAN BUREN

			NO.	NO.	%		
TOTAL ESTABLISHMENTS:	7	TYPE TEST	PERFORMED	FAIL	FAIL	LABEL VERIFICATIONS	FILL ID VERIFICATIONS
INSPECTED:	7	=====	=====	=====	=====	=====	=====
		ALCOHOL	0	0	0.0	NO. PERFORMED: 71	NO. PERFORMED: 24
VIOLATION NOTICES:	0	VISUAL	24	0	0.0	NO. VIOLATIONS: 0	NO. VIOLATIONS: 0
STOP SALES:	1	WATER	24	1	4.2		

COUNTY: 90 - WASHINGTON

			NO.	NO.	%		
TOTAL ESTABLISHMENTS:	86	TYPE TEST	PERFORMED	FAIL	FAIL	LABEL VERIFICATIONS	FILL ID VERIFICATIONS
INSPECTED:	85	=====	=====	=====	=====	=====	=====
		ALCOHOL	0	0	0.0	NO. PERFORMED: 1480	NO. PERFORMED: 337
VIOLATION NOTICES:	5	VISUAL	337	0	0.0	NO. VIOLATIONS: 0	NO. VIOLATIONS: 5
STOP SALES:	0	WATER	122	0	0.0		

COUNTY: 93 - WHITE

			NO.	NO.	%		
TOTAL ESTABLISHMENTS:	29	TYPE TEST	PERFORMED	FAIL	FAIL	LABEL VERIFICATIONS	FILL ID VERIFICATIONS
INSPECTED:	28	=====	=====	=====	=====	=====	=====
		ALCOHOL	0	0	0.0	NO. PERFORMED: 465	NO. PERFORMED: 102
VIOLATION NOTICES:	6	VISUAL	102	1	1.0	NO. VIOLATIONS: 1	NO. VIOLATIONS: 5
STOP SALES:	4	WATER	98	3	3.1		

KEROSENE & MOTOR FUEL INSPECTION SUMMARY
CLIENT 25 - TENNESSEE DEPT OF AGRICULTURE
REGION 3 - EAST TENNESSEE
FROM 07/01/04 - THRU 06/30/05

			NO.	NO.	%		
TOTAL ESTABLISHMENTS:	2032	TYPE TEST	PERFORMED	FAIL	FAIL	LABEL VERIFICATIONS	FILL ID VERIFICATIONS
INSPECTED:	1991	=====	=====	=====	=====	=====	=====
		ALCOHOL	0	0	0.0	NO. PERFORMED: 35107	NO. PERFORMED: 7118
VIOLATION NOTICES:	237	VISUAL	7118	2	0.0	NO. VIOLATIONS: 113	NO. VIOLATIONS: 122
STOP SALES:	42	WATER	6395	42	0.7		

KEROSENE & MOTOR FUEL INSPECTION SUMMARY
 CLIENT 25 - TENNESSEE DEPT OF AGRICULTURE
 FROM 07/01/04 - THRU 06/30/05

		NO.	NO.	%			
TOTAL ESTABLISHMENTS:	4761	PERFORMED	FAIL	FAIL	LABEL VERIFICATIONS	FILL ID VERIFICATIONS	
INSPECTED:	4684	=====	=====	=====	=====	=====	
		ALCOHOL	0	0	0.0	NO. PERFORMED: 85881	NO. PERFORMED: 16861
VIOLATION NOTICES:	974	VISUAL	16861	8	0.0	NO. VIOLATIONS: 274	NO. VIOLATIONS: 680
STOP SALES:	128	WATER	15660	140	0.9		