

Managing a forest requires clear objectives, detailed information of resources, and planning. Only the landowner can determine management objectives. Resource information collection and plan development are best provided by qualified natural resource professionals to ensure long term improvement in the quality and productivity of the resource. Natural resource professionals, such as foresters, wildlife biologists, and soil conservationists, have the training and equipment to identify suitable wildlife habitat, presence of insects and diseases, volume and growth of standing timber, soil characteristics, and unique habitats where endangered species may live. A management plan combines objectives and resource information into actions that produce products and benefits such as oak, cherry, or walnut timber, pine pulpwood, opportunities to view songbirds, hunt deer, or hike a trail.

The Tennessee Department of Agriculture Division of Forestry (TDF) has professional foresters stationed across the state who provide technical assistance. They have been specifically trained to collect information on resources and work with landowners to develop forest management plans. In addition, many of the benefits produced by a well managed forest accrue to others - clean water to residents in the watershed, wildlife to local hunters, and decreased insect pest populations to neighboring forestland owners. For this reason, a number of programs have been created to provide financial assistance that support private forest landowners who want to increase the production of these public benefits.

#### **Technical Assistance**

The primary program for providing technical assistance is the Forest Stewardship Program. TDF foresters conduct on the ground assessments to determine the condition of timber resources, forest health, cultural resources, wildlife habitat and water quality. Foresters then prepare a comprehensive forest management plan based on landowner objectives. Foresters also follow up with landowners to encourage the implementation of the plan. Group workshops and presentations, the division's web site, and County Forestry Associations (CFA's) are other forms of technical assistance coordinated through TDF.



#### **Financial Assistance**

Financial assistance to landowners is available through a number of agencies and programs listed in the table on the inside page. Most programs require the landowner to contribute a share of the cost. Each agency has a different objective; some emphasize protection of water quality and others wildlife or renewable energy. The overall purpose is to encourage landowners to implement forestry practices.

The requirements to qualify for cost share programs vary. The Division of Forestry's role in administering specific programs also varies from marketing other agency's programs to 100% program administration. The table briefly explains current program opportunities. Contact your local Area Forester (refer to map) or the local office of the agency listed in the table for additional program information.

#### **Other Sources of Assistance**

TDF does not provide services generally provided by the private sector. These include long term management contracts, assessing forest values for taxation or timber trespass issues, timber sale administration, surveying, or acting as a landowner's business agent. These services are more appropriately provided by private forestry consultants. Forestry consultants provide a wide range of forest business and management services. Contact your local Area Forester or refer to the division's web site for listings of private forestry consultants.

The mission of the Tennessee Division of Forestry's Landowner Assistance Program is to provide professional, science-based technical assistance to private forest landowners of Tennessee. Providing quality technical assistance is critical in reaching our goal of increased sustainability of forest products and non-timber benefits on forestlands. The services offered are designed to help Non-Industrial Private Forest (NIPF) landowners identify and pursue opportunities to increase the health, productivity, and sustainability of their forests.



For more information on the programs and services offered by the Tennessee Department of Agriculture Division of Forestry contact your local Division office

- or -

phone: 615-837-5520

Visit us on the web at:

[www.TN.gov/agriculture/forestry](http://www.TN.gov/agriculture/forestry)

[www.BurnSafeTN.org](http://www.BurnSafeTN.org)

Tennessee Department of Agriculture, Auth. No. 325403, 10000 copies, March 2011.  
This public document was promulgated at a cost of \$0.10 per printed copy.

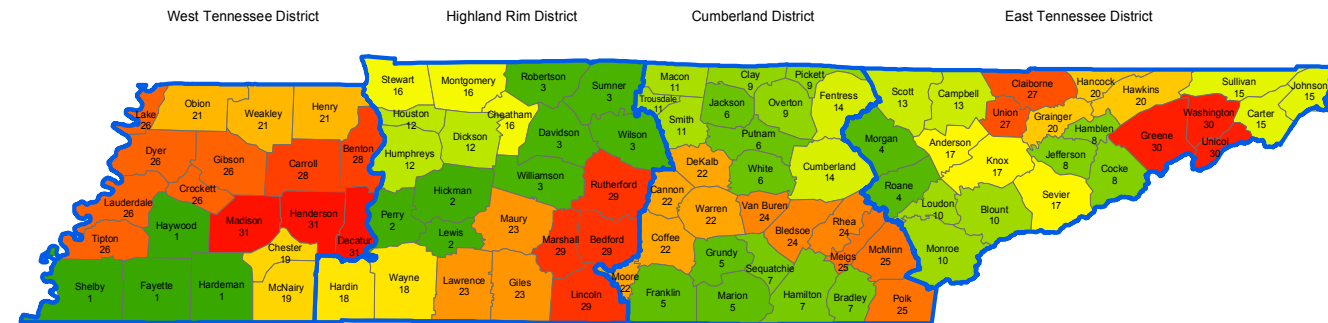
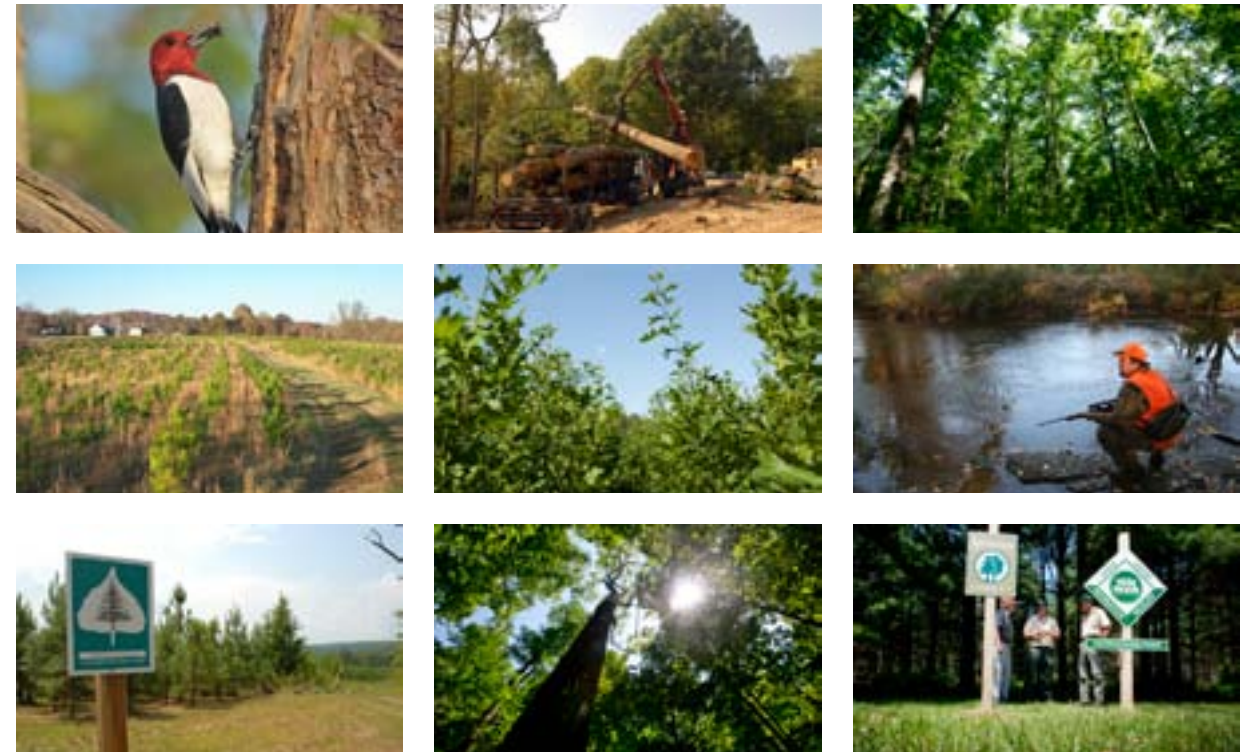


## Forest Landowner Assistance



**Forest Resource Management**

Program	Agency	Incentive
Forest Stewardship Program (FSP)	USFS, TDF	Free evaluation of forest resources with plan for conservation and utilization
TN Agricultural Enhancement Program (TAEP)	TDF	Up to 75% cost share practices to promote sustainable forest management
American Tree Farm System (ATFS)	TDF, TFA, AFF	Free evaluation of forestland, plan for sustainable forestry, and 3 <sup>rd</sup> party forest certification
Conservation Reserve Program (CRP)	FSA, TDF	50% cost share practices and annual payments for protecting highly erodible and environmentally sensitive land
Environmental Quality Incentives Program (EQIP)	NRCS	75%/90% cost share practices to install and maintain conservation practices including forest management plan development
Wildlife Habitat Incentives Program (WHIP)	NRCS	75%/90% cost share practices to develop or enhance fish and wildlife habitat
Wetland Reserve Program (WRP)	NRCS	Technical and financial assistance to restore, enhance, or improve wetland resources
Southern Pine Beetle Initiative (SPBI)	USFS, TDF	Up to 50% cost share practices to implement southern pine beetle resistant forestry practices
Forest Legacy	USFS, TDF	Permanent conservation easement or fee simple purchases to protect environmentally important, working forestlands threatened with conversion to non-forest uses
Conservation Stewardship Program (CSP)	NRCS	Up to \$200,000 over 5 year period (\$400,000 for joint ventures) to conserve and enhance soil, water, air, and related natural resources
Biomass Crop Assistance Program (BCAP)	FSA	Financial assistance to owners and operators of agricultural and non-industrial private forest land to establish, produce, and deliver biomass feedstocks
Emergency Forest Restoration Program (EFRP)	FSA	75% cost share to restore tree cover after natural disaster
Farm and Ranch Lands Protection Program (FRPP)	NRCS	Conservation easement for up to 50% of market value to keep productive farm and rangeland in agricultural uses



**Area Forester Office Location and Phone Number**

- |                              |                                 |                                |                                |                                  |
|------------------------------|---------------------------------|--------------------------------|--------------------------------|----------------------------------|
| 1, Brownsville, 731-772-4592 | 8, Jefferson City, 865-475-7788 | 15, Elizabethton, 423-542-9221 | 22, Morrison, 931-635-2757     | 29, Shelbyville, 931-685-5030    |
| 2, Centerville, 931-729-3535 | 9, Livingston, 931-823-2428     | 16, Clarksville, 931-652-3909  | 23, Lawrenceburg, 931-424-4009 | 30, Greeneville, 423-636-8805    |
| 3, Nashville, 615-837-5552   | 10, Maryville, 865-981-2399     | 17, Knoxville, 865-594-6432    | 24, Dayton, 423-775-0251       | 31, Lexington, 731-968-6676 x104 |
| 4, Rockwood, 865-354-0258    | 11, Carthage, 615-735-0300      | 18, Savannah, 731-925-3157     | 25, Athens, 423-744-2818       |                                  |
| 5, Sequatchie, 423-942-6408  | 12, Dickson, 615-446-0614       | 19, Selmer, 731-645-3531       | 26, Ripley, 731-635-4799       |                                  |
| 6, Cookeville, 931-528-6813  | 13, LaFollette, 423-566-3715    | 20, Rogersville, 423-272-7130  | 27, Tazewell, 423-526-2992     |                                  |
| 7, Soddy Daisy, 423-332-5335 | 14, Crossville, 931-484-4227    | 21, Dresden, 731-364-3430      | 28, Huntingdon, 731-986-9528   |                                  |

AFF – American Forest Foundation  
 FSA – Farm Services Agency  
 NRCS – Natural Resources Conservation Service

TDF – Tennessee Division of Forestry  
 TFA - Tennessee Forestry Association  
 USFS - United States Forest Service